

# U.S. PUBLIC LAND SURVEY MONUMENT RECORD - GRANT COUNTY, WI

Section 22, Town 1 North Range 2 West, Town of Jamestown (a)

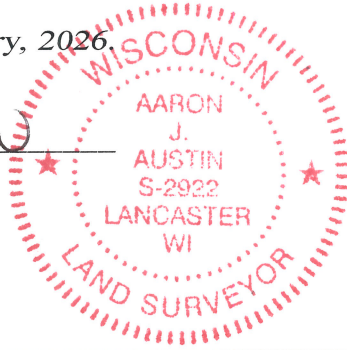
NOTE: This form is intended and designed to fulfill all requirements of the Wisconsin Administrative Code Chapter A-E 7.08, U.S. Public Land Survey Monument Record (3) (a) (b) (c) (d) (e) (f) (g) (h) (i).

**CERTIFICATE:** (i)

I, Aaron J. Austin, Wisconsin Professional Land Surveyor, do hereby certify that the corner location on this record was determined by me and/or under my direct supervision and that this U.S. Public Land Survey Monument Record is correct and complete to the best of my knowledge and belief.

Dated this 14th day of January, 2026.

*Aaron J. Austin*  
Aaron J. Austin, PLS-2922



⊕ = CORNER LOCATION

Grant County Coordinates:  
NAD 83 (2011)  
Northing: 415,747.19  
Easting: 850,763.93

**HISTORY OF CORNER ESTABLISHMENT:**

Original corner was set in 1832 by Lucius Lyon.  
Larry Austin set a 1" Rebar with a Grant County Aluminum cap and prepared a Survey Monument Record dated 2-28-2001.

**DESCRIPTION OF CORNER EVIDENCE FOUND:** (b) (f) (g) (h)

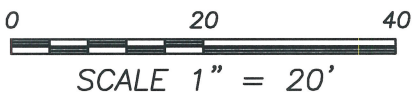
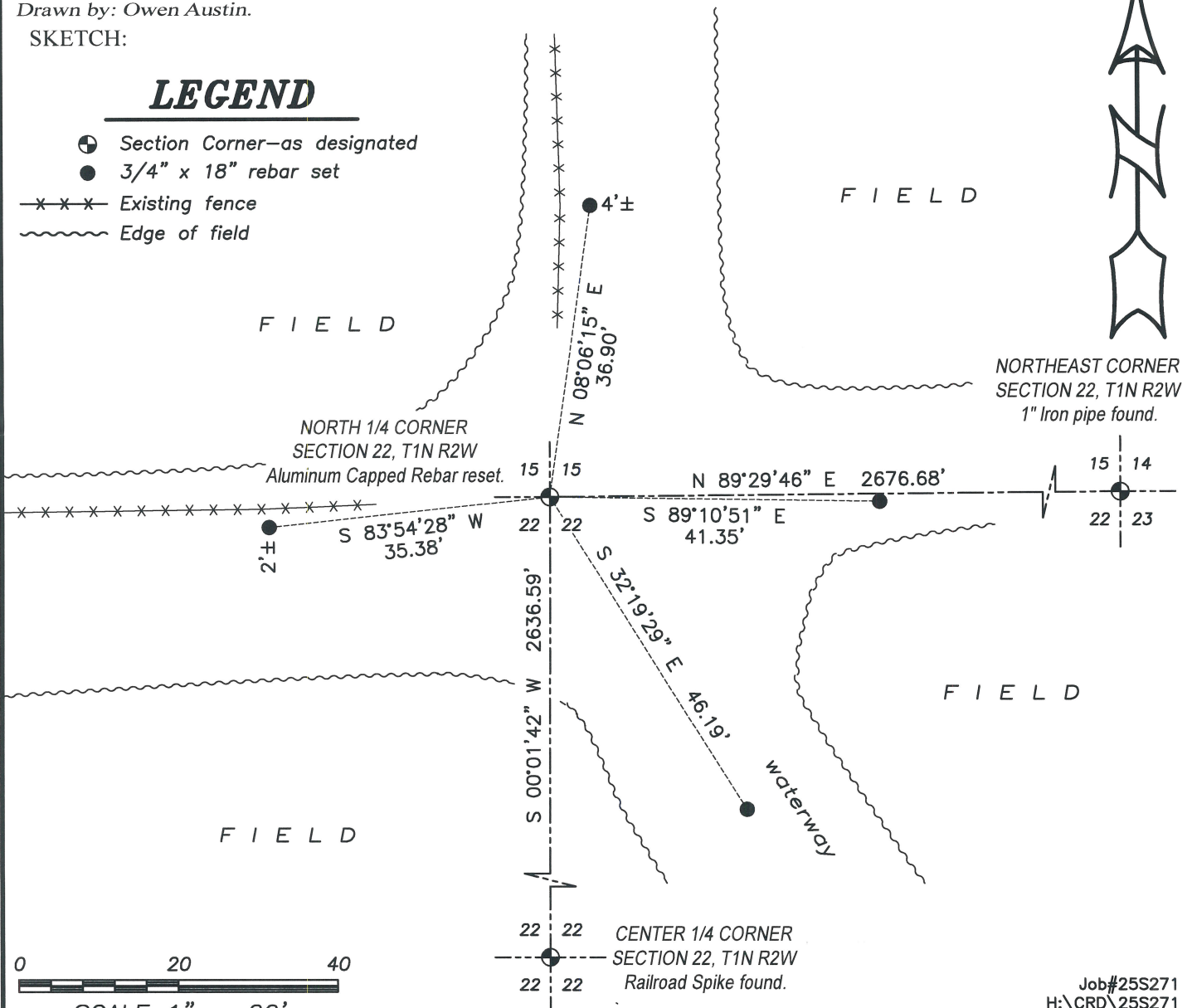
I found a disturbed Aluminum Capped Rebar and reset the Monument based on the distances from C.S.M. #2181 to the Northeast Corner of Section 22 and the Center 1/4 Corner of Section 22. I found four disturbed witness corners and set four new witness corners after I verified the Monument's location with G.P.S. and E.D.M. methods.

**DESCRIPTION OF CORNER AND WITNESS MONUMENTS,** references and accessories used to perpetuate the original or re-established location of this corner. (c) (d) (e)  
Witnesses to corner location Owen Austin, Tanner Austin.  
Drawn by: Owen Austin.

SKETCH:

## LEGEND

- ⊕ Section Corner—as designated
- 3/4" x 18" rebar set
- x-x-x- Existing fence
- ~~~~~ Edge of field



# GRANT COUNTY CERTIFIED LAND CORNER

CORNER NUMBER 66

**CERTIFICATE:**

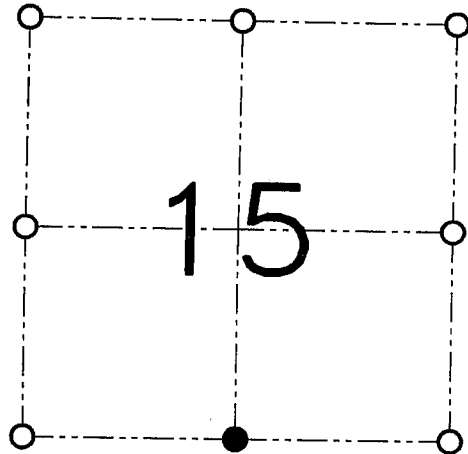
I, Larry L. Austin, do hereby certify that on the 21st day of February, 2001, I found evidence of the South 1/4 corner of Section 15, Town 1 North, Range 2 West, of the 4th Principal Meridian, and I re-established said corner according to the Wisconsin statutes as shown and described hereon.

Dated this 28th day of February, 2001

*Larry L. Austin*  
Larry L. Austin, S-1903



SEAL



● = CORNER LOCATION

SOUTH 1/4 CORNER OF  
SECTION 15, T 1 N R 2 W  
TOWN OF JAMESTOWN

**HISTORY OF ORIGINAL CORNER ESTABLISHMENT:**

Corner was originally set in 1832 by Lucius Lyon.  
No other record of the corner was found.

**DESCRIPTION OF CORNER EVIDENCE FOUND:**

I reset the corner at an occupied fence corner. The fence corner was the only evidence to the location of the corner. This location fit well with area occupied and monumented corners. Verified this location using EDM & GPS methods.

**DESCRIPTION OF CORNER AND WITNESS MONUMENTS**

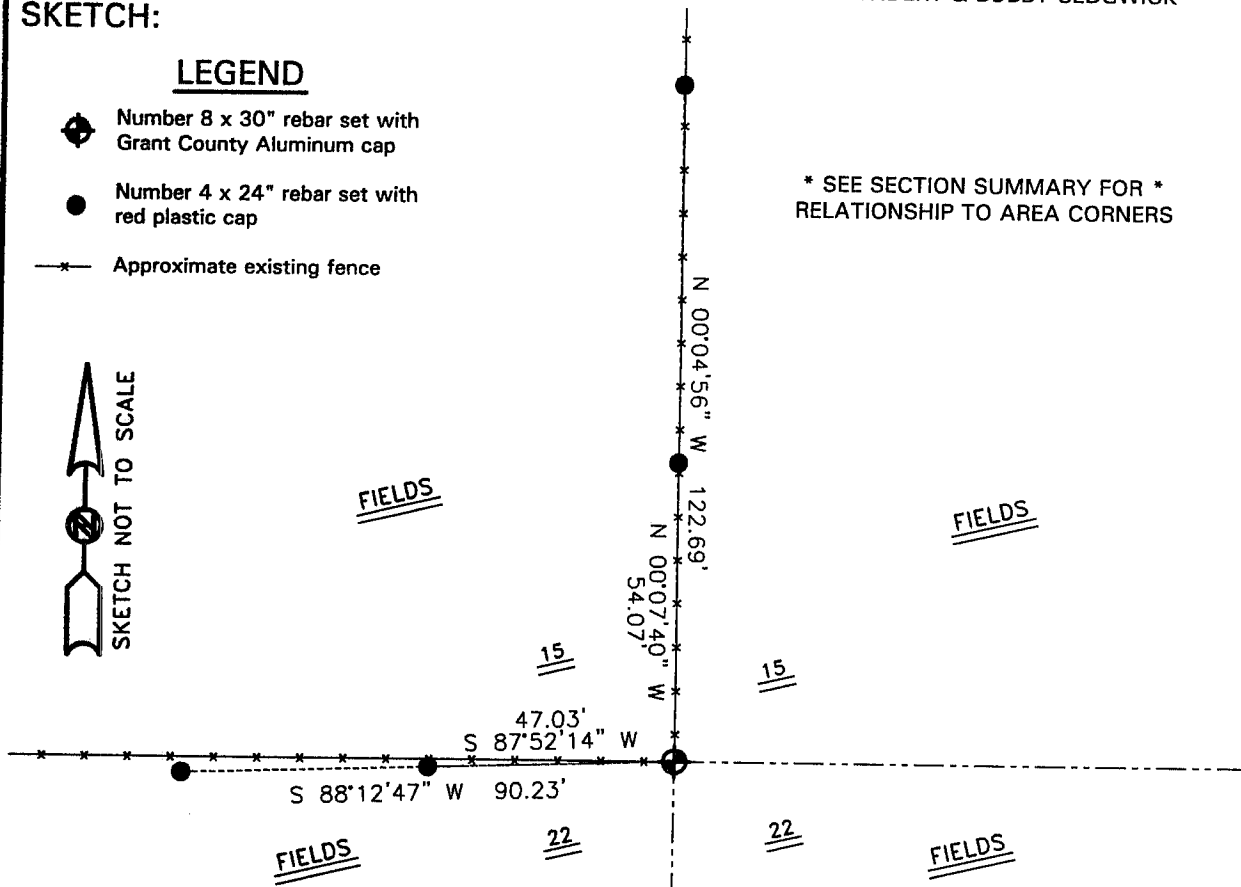
references and accessories used to perpetuate the original or re-established location of this corner.  
WITNESS TO THE CORNER LOCATION: SHANE AUSTIN & SHELBY BLINDERT & BOBBY SEDGWICK

**SKETCH:**

LEGEND

- ◆ Number 8 x 30" rebar set with Grant County Aluminum cap
- Number 4 x 24" rebar set with red plastic cap
- \*— Approximate existing fence

\* SEE SECTION SUMMARY FOR \*  
RELATIONSHIP TO AREA CORNERS



**AUSTIN ENGINEERING, LLC**  
4211 HWY 81 E, LANCASTER, WI 53813  
PHONE 608-723-6363 FAX 608-723-6702

FIELDBOOK: SDR33, 2030  
G:\T1NR2W\16  
G:\SWA\TIE\T1NR2W\66

DRAWN BY: SW AUSTIN  
APPROVED: LL AUSTIN  
CREW: BS-SB-SA-TF  
SHEET 1 OF 1