

MAR 24 2000

GRANT COUNTY CERTIFIED LAND CORNER

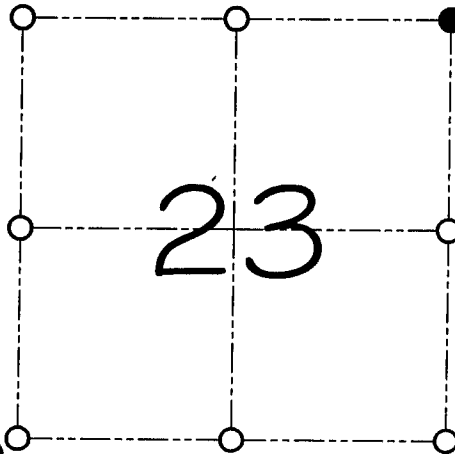
CORNER NUMBER 63

CERTIFICATE:

I, Larry L. Austin, do hereby certify that on the 1st day of February, 2000, I found no evidence of the Northeast corner of Section 23, Town 1 North, Range 2 West, of the 4th Principal Meridian, and I re-established said corner according to the Wisconsin statutes as shown and described hereon.

Dated this 10th day of February, 2000

Larry L. Austin
Larry L. Austin S-1903



● = CORNER LOCATION

**NORTHEAST CORNER OF
SECTION 23, T 1 N R 2 W
TOWN OF JAMESTOWN**

HISTORY OF ORIGINAL CORNER ESTABLISHMENT:

The original corner was set in 1832 by Lucius Lyon.
No other record of the corner was found.

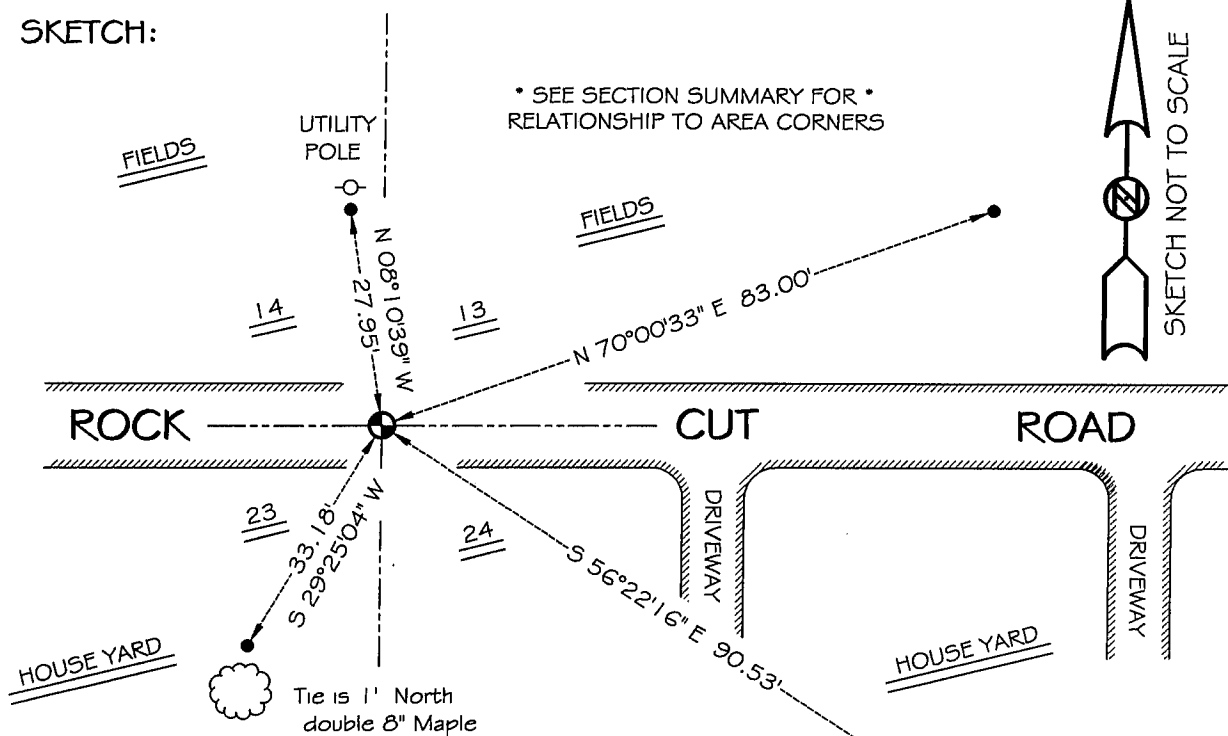
DESCRIPTION OF CORNER EVIDENCE FOUND:

I reset the corner based on a single proportion East and West of the corner. The occupational evidence of the centerline of the road was used for Northing. I accepted this location after an E.D.M. and G.P.S. traverse of the area.

DESCRIPTION OF CORNER AND WITNESS MONUMENTS, references and accessories used to perpetuate the original or re-established location of this corner

WITNESS TO THE CORNER LOCATION: BOBBY SEDGWICK & SHANE AUSTIN

SKETCH:



LEGEND

- ⊕ Number 8 by 30" rebar set with Grant County aluminum cap
- Number 4 by 24" rebar set with red plastic cap

Tie is 1' North of 6" Maple