

U.S. PUBLIC LAND SURVEY MONUMENT RECORD - GRANT COUNTY, WI

Section 8, Town 1 North Range 2 West, Town of Jamestown (a)

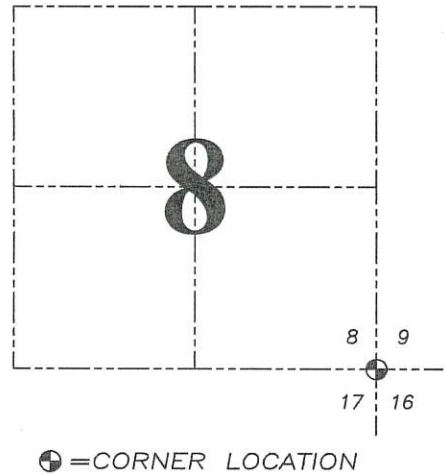
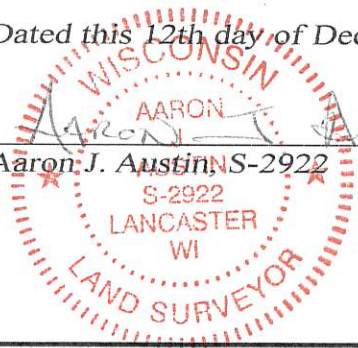
NOTE: This form is intended and designed to fulfill all requirements of the Wisconsin Administrative Code Chapter A-E 7.08, U.S. Public Land Survey Monument Record (3) (a) (b) (c) (d) (e) (f) (g) (h) (i).

CERTIFICATE: (i)

I, Aaron J. Austin, Wisconsin Professional Land Surveyor, do hereby certify that the corner location on this record was determined by me and/or under my direct supervision and that this U.S. Public Land Survey Monument Record is correct and complete to the best of my knowledge and belief.

Dated this 12th day of December, 2018.

Aaron J. Austin, S-2922



HISTORY OF CORNER ESTABLISHMENT:

Lucius Lyon set the original corner in 1832. Bruce Bowden set a 4" cast aluminum monument and prepared a tie sheet dated 4/24/1978.

DESCRIPTION OF CORNER EVIDENCE FOUND: (b) (f) (g) (h)

I found the Corner set by Bowden along with two witness monuments. I set two additional witness monuments after I verified the corner's location with G.P.S. and E.D.M. methods.

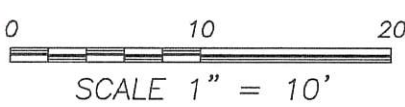
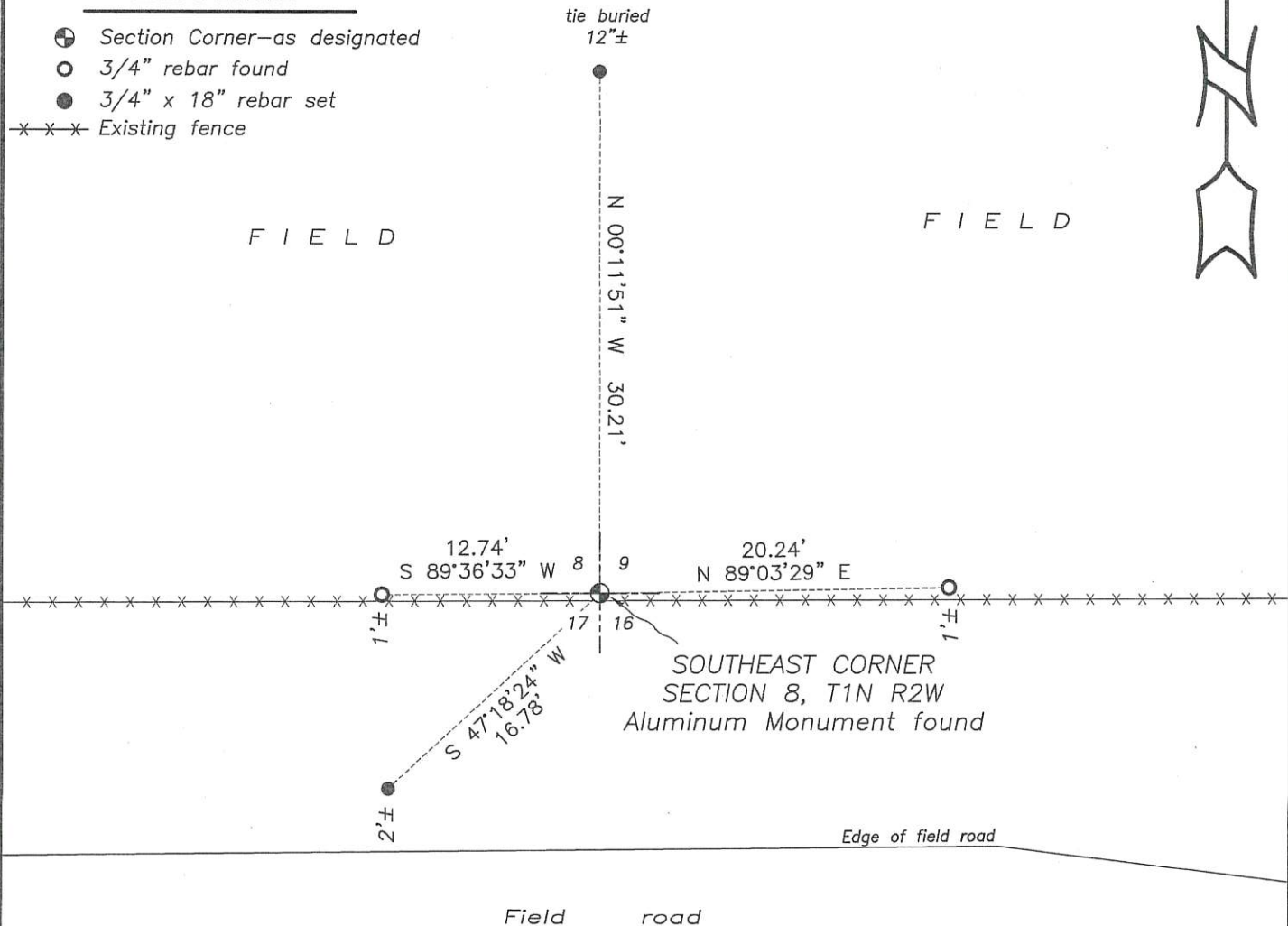
DESCRIPTION OF CORNER AND WITNESS MONUMENTS, references and accessories used to perpetuate the original or re-established location of this corner. (c) (d) (e)

Witnesses to corner location Shane Austin, Owen Austin. Drawn by Owen Austin.

SKETCH:

LEGEND

- ⊕ Section Corner—as designated
- 3/4" rebar found
- 3/4" x 18" rebar set
- x-x-x Existing fence



SECTION CORNER TIES

TO THE NORTHWEST CORNER OF SECTION 16, TOWN 1 NORTH,
RANGE 2 WEST, FOURTH PRINCIPLE MERIDIAN, JAMESTOWN
TOWNSHIP, GRANT COUNTY, WISCONSIN.

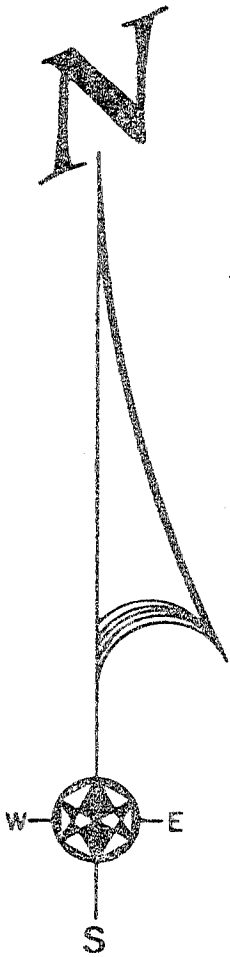
Jamestown

I, Bruce D. Bowden, hereby certify that I have
complied with the Wisconsin Statutes, the Statutes
of the United States and the rules and regulations
of the Secretary of the Interior in the location of
the corner shown below.

April 24, 1978




Bruce D. Bowden
Bruce D. Bowden R.L.S.-1250

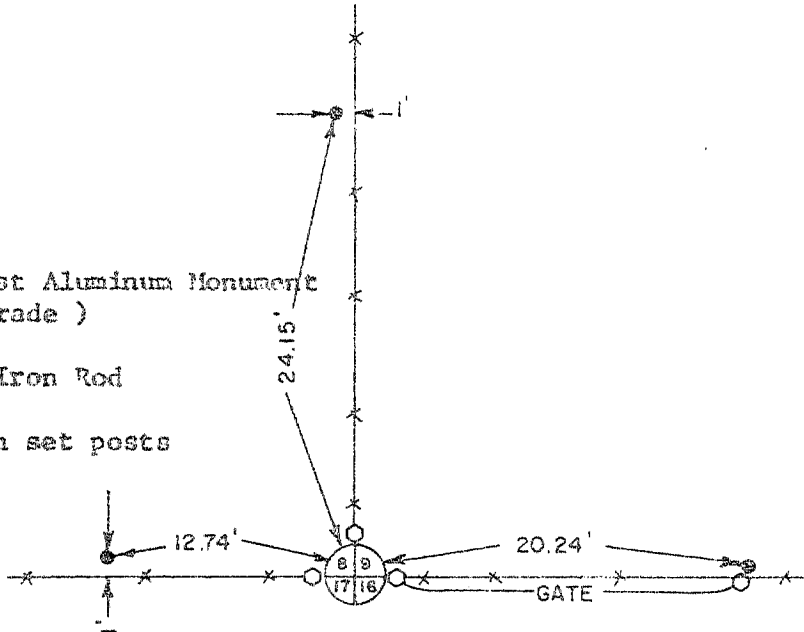
Corner set from existing physical
evidence and checked with
proportionate measure.



STATE PLANE COORDINATES:
NORTH 206852.224
EAST 1832294.214

LEGEND

-  4" x 30" Cast Aluminum Monument
(at grade)
-  3/4" x 24" Iron Rod
-  Large wooden set posts



BOOK D-1 PAGE 47
JOB NO. D-78007
CHECKED _____
DRAWN BY RJM

SCALE: 1" = 10'

TALARCZYK & ASSOC., INC.

110 E. Division Street
DODGEVILLE, WI 53533

Phone 608/935-5301