

GRANT COUNTY CERTIFIED LAND CORNER

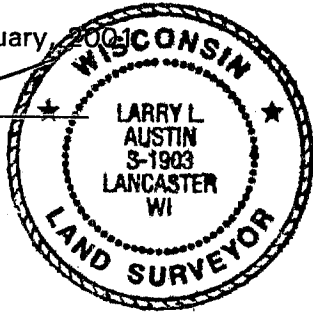
CORNER NUMBER 45

CERTIFICATE:

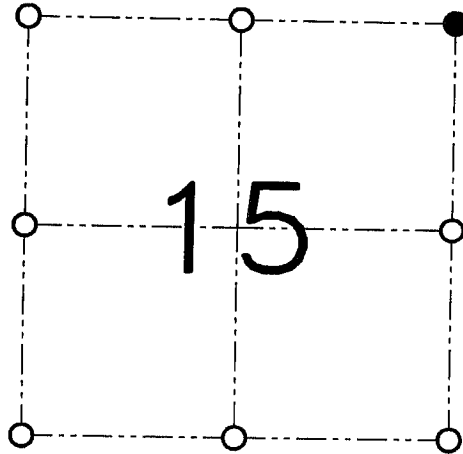
I, Larry L. Austin, do hereby certify that on the 15th day of February, 2001, I found no evidence of the Northeast corner of Section 15, Town 1 North, Range 2 West, of the 4th Principal Meridian, and I re-established said corner according to the Wisconsin statutes as shown and described hereon.

Dated this 28th day of February, 2001

Larry L. Austin
Larry L. Austin, S-1903



SEAL



● = CORNER LOCATION

NORTHEAST CORNER OF SECTION 15, T 1 N R 2 W TOWN OF JAMESTOWN

HISTORY OF ORIGINAL CORNER ESTABLISHMENT:

Corner was originally set in 1832 by Lucius Lyon. In 1878 Joel Barber tied to the corner. In 1898 Sampson tied to the same corner Barber tied to.

DESCRIPTION OF CORNER EVIDENCE FOUND:

I was unable to find any of Barber's ties. I reset the corner proportionately between all adjoining corners. Verified this location using EDM & GPS methods.

DESCRIPTION OF CORNER AND WITNESS MONUMENTS

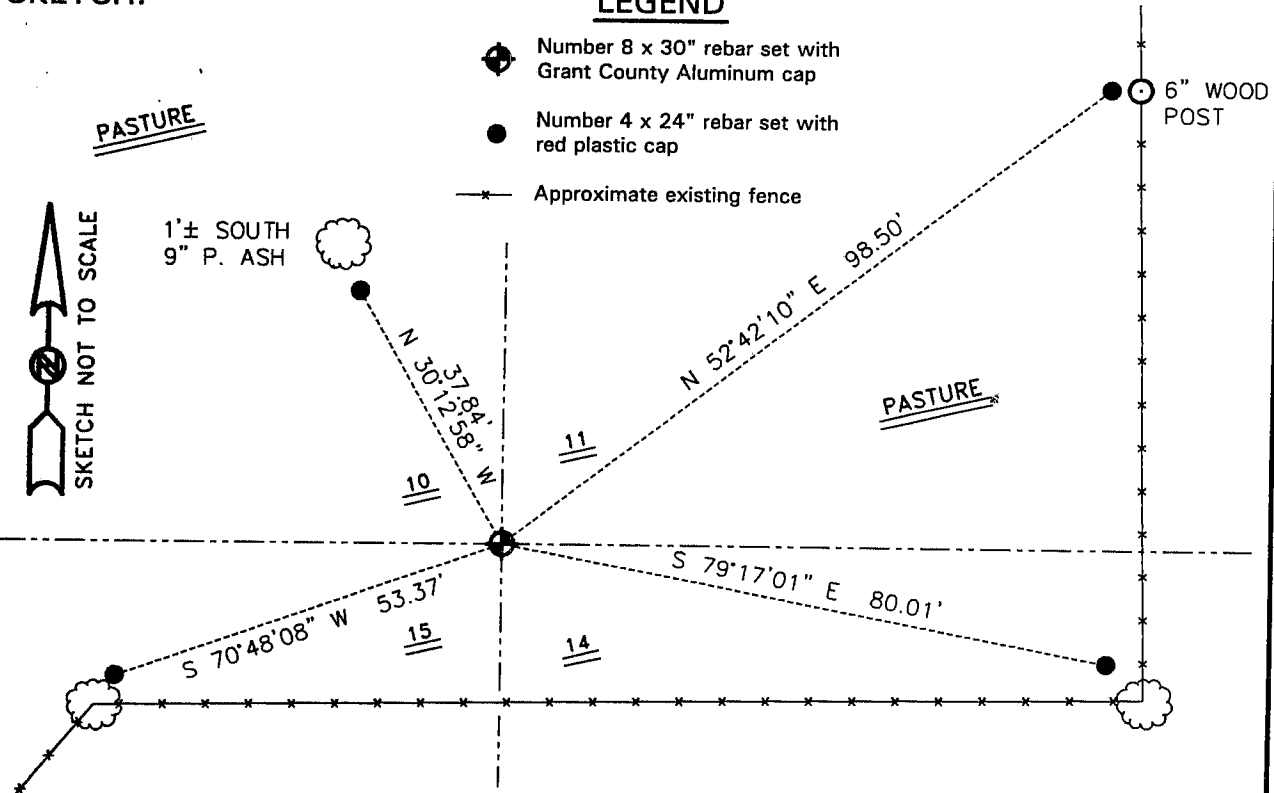
references and accessories used to perpetuate the original or re-established location of this corner.

WITNESS TO THE CORNER LOCATION: TIM FAUVER & SHELBY BLINDERT & BOBBY SEDGWICK

SKETCH:

LEGEND

- ◆ Number 8 x 30" rebar set with Grant County Aluminum cap
- Number 4 x 24" rebar set with red plastic cap
- *— Approximate existing fence



* SEE SECTION SUMMARY FOR *
RELATIONSHIP TO AREA CORNERS

AUSTIN ENGINEERING, LLC
4211 HWY 81 E, LANCASTER, WI 53813
PHONE 608-723-6363 FAX 608-723-6702

FIELDBOOK: SDR33, 2030
G:\T1NR2W\16
G:\SWA\TIE\T1NR2W\45

DRAWN BY: SW AUSTIN
APPROVED: LL AUSTIN
CREW: BS-SB-SA-TF
SHEET 1 OF 1