

GRANT COUNTY CERTIFIED LAND CORNER

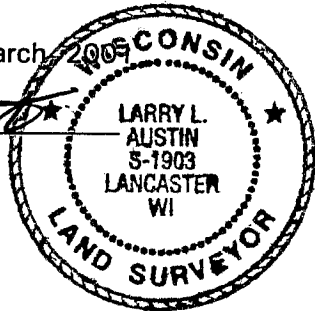
CORNER NUMBER 44

CERTIFICATE:

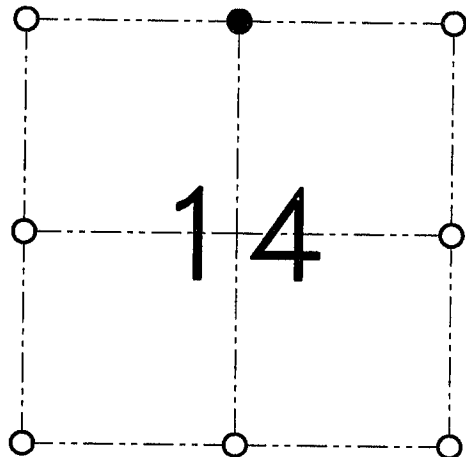
I, Larry L. Austin, do hereby certify that the corner location on this record was determined by me and/or under my direct supervision that this U.S. public land survey monument record is correct and complete to the best of my knowledge and belief.

Dated this 16th day of March, 2009

Larry L. Austin
Larry L. Austin, S-1903



SEAL



● = CORNER LOCATION

SECTION 14, T 1 N R 2 W
TOWN OF JAMESTOWN

HISTORY OF ORIGINAL CORNER ESTABLISHMENT:

Corner was originally set in 1832 by Lucius Lyon.
In 1878 Joel Barber set a Cedar stake at the corner.

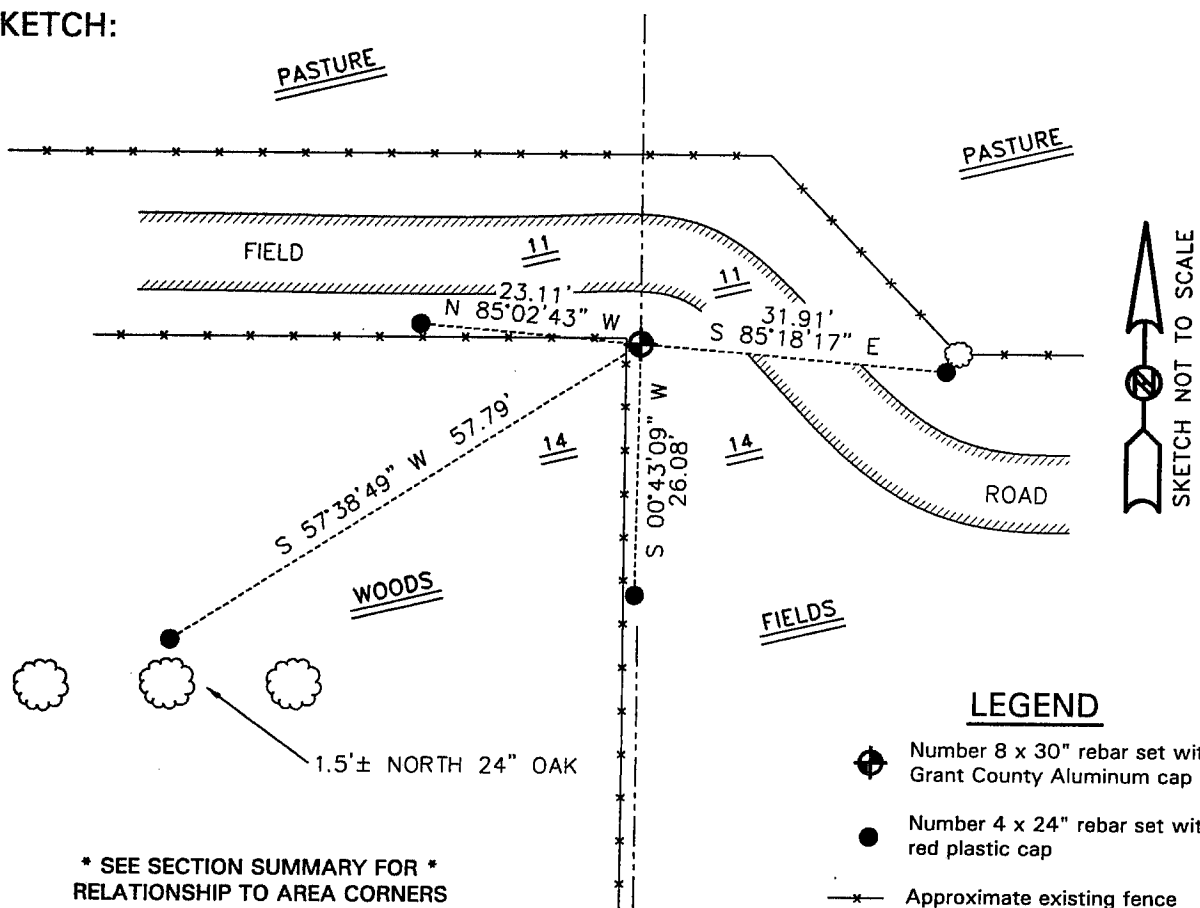
DESCRIPTION OF CORNER EVIDENCE FOUND:

I reset the corner at an occupied fence corner. This location was the only evidence available at the time of this survey. I verified this location using an EDM & GPS traverse of the area.

DESCRIPTION OF CORNER AND WITNESS MONUMENTS

references and accessories used to perpetuate the original or re-established location of this corner.

SKETCH:



* SEE SECTION SUMMARY FOR *
RELATIONSHIP TO AREA CORNERS

AUSTIN ENGINEERING, LLC
4211 HWY 81 E, LANCASTER, WI 53813
PHONE 608-723-6363 FAX 608-723-6702

FIELDBOOK: SDR33, 2030
G:\T1NR2W\16
G:\SWA\TIE\T1NR2W\44

DRAWN BY: SW AUSTIN
APPROVED: LL AUSTIN
CREW: BS-SB-SA-TF
SHEET 1 OF 1