

U.S. PUBLIC LAND SURVEY MONUMENT RECORD

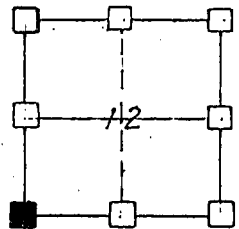
GRANT COUNTY, WISCONSIN

SECTION 12 TOWNSHIP IN RANGE 2W CORNER SW

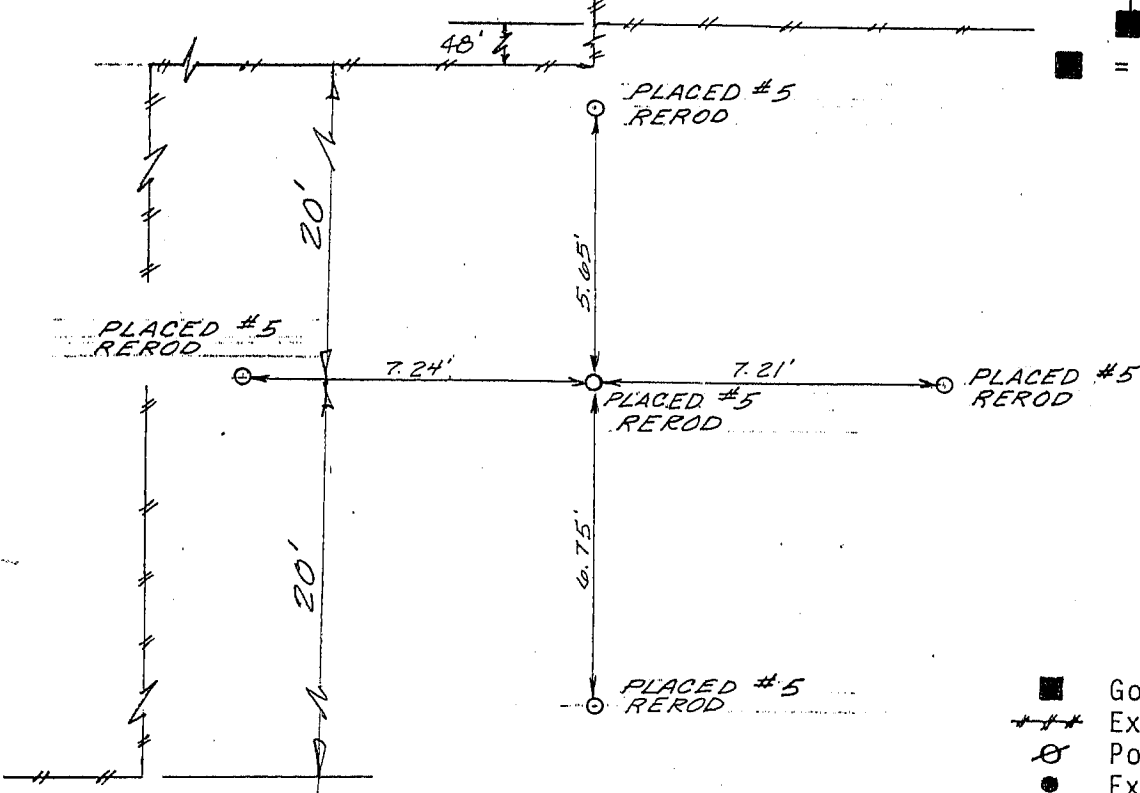
EVIDENCE: _____

MONUMENT: Found Placed

METHOD: Accepted Existing Location
 Accepted Occupation
 Lost Corner Porportionate Methods



= Corner Location



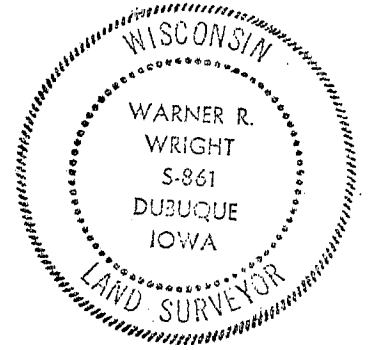
LEGEND

- Government Corner
- Existing Fence Lines
- ⊗ Power Pole
- Existing Iron Pipe as shown
- Placed Rebar as shown

Jameson Inc.

HISTORY & OTHER INFORMATION: RE-ESTABLISHED FROM FENCE LINES.

I, WARNER WRIGHT, hereby certify that the corner location shown hereon this record was determined by me or under my direction and control and that this U.S. Public Land Survey Monument Record is correct and complete to the best of my knowledge and belief.



Date 12-16-87
 Registered Land Surveyor No. 861

ASSOCIATES P.C.
 3210 St. Joseph Dr., R.R. #2 • Dubuque, IA 52001 • (319) 558-2484
 P.O. Box 275 • Galena, IL 61036 • (815) 777-0359

Title MONUMENT RECORD SEC. 12, T.1N, R.2W 4th P.M.		Sheet 1 of 1
Date 11-13-87	Scale 1" = 5'-0"	Drawing No.
Drawn SMD	Field Book WI. -1-85	
Reviewed W.W.	Revision	