

Grant County

Certified U.S. Public Land Survey Monument Record

DATUM : NAD83 (2011) WISCONS

GRANT COUNTY COORDINATES

CONTROL IS A COMBINATION OF GPS AND CONVENTIONAL FIELD CONTROL.

NORTH 423632.95

EAST 861334.40

The Center Quarter corner of Section 12, Town 1 North,
Range 2 West, Town of Jamestown, Grant County, Wisconsin.

(A) Identify the corner by reference to the U.S. public land survey system.

WITNESS TO CORNER LOCATION:



(E) The corner was restored through acceptance of
(1) an obliterated evidence location
(2) a found perpetuated location
(3) lost corner proportionate methods

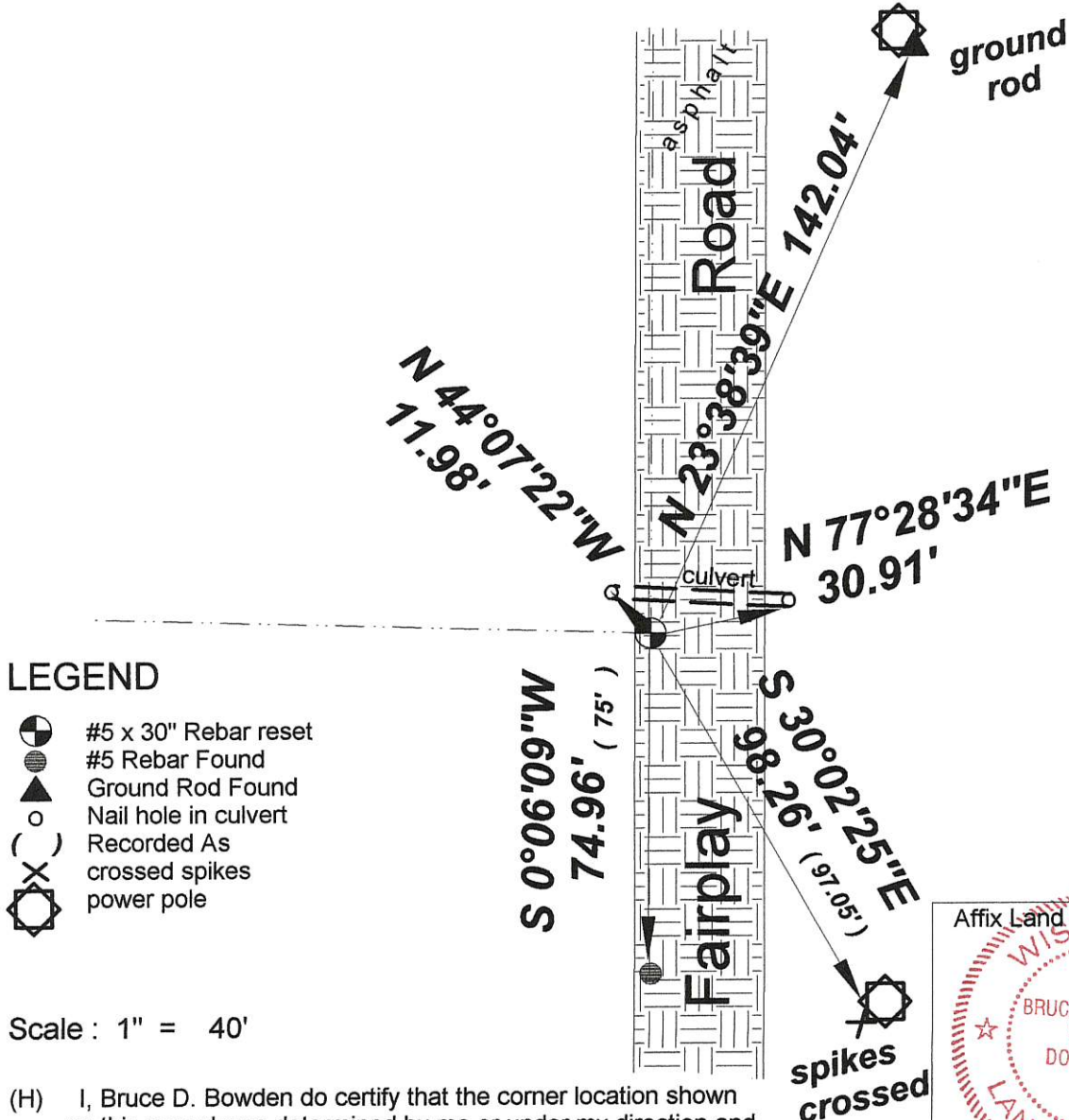
= Corner monument restored or maintained.

Sec. 12, T 1 N, R 2 W

(B) Describe any record evidence, monument evidence, occupational evidence, testimonial evidence or any other material evidence you considered, and whether the monument was placed or found.

Found and accepted the rebar set by Warner R. Wright and recorded on a monument record dated 12/16/87. Top was found bent and was straightened and ties were reset and remeasured.

(C, D, F, G) Plan view drawing below, provide reference ties to at least 4 witness monuments, or, if the location is within a municipality, to at least 2 witness monuments. Depict the relevant monuments and reference ties in sufficient detail to enable accurate relocation of the corner monument, if disturbed. Indicate North. Describe any material discrepancy between the location of the corner as restored or reestablished and the location of that corner as previously monumented by distance and direction. Show the discrepancy on the plan view and the distances between the corner as previously monumented. If the corner was reestablished through lost corner proportionate methods, show the method, including the directions and distances to other public land survey corners used for proportioning in determining the corner location.



LEGEND

- #5 x 30" Rebar reset
- #5 Rebar Found
- Ground Rod Found
- Nail hole in culvert
- Recorded As crossed spikes power pole

Scale : 1" = 40'

(H) I, Bruce D. Bowden do certify that the corner location shown on this record was determined by me or under my direction and control and that this U.S. Public Land Survey Monument Record is correct and complete to the best of my knowledge and belief.

Bruce D. Bowden
Signature January 28, 2017



Romportl No. 20102122020
Grant Co. Index No. 39A 39.5

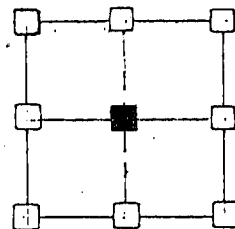
U.S. PUBLIC LAND SURVEY MONUMENT RECORD

GRANT COUNTY, WISCONSIN

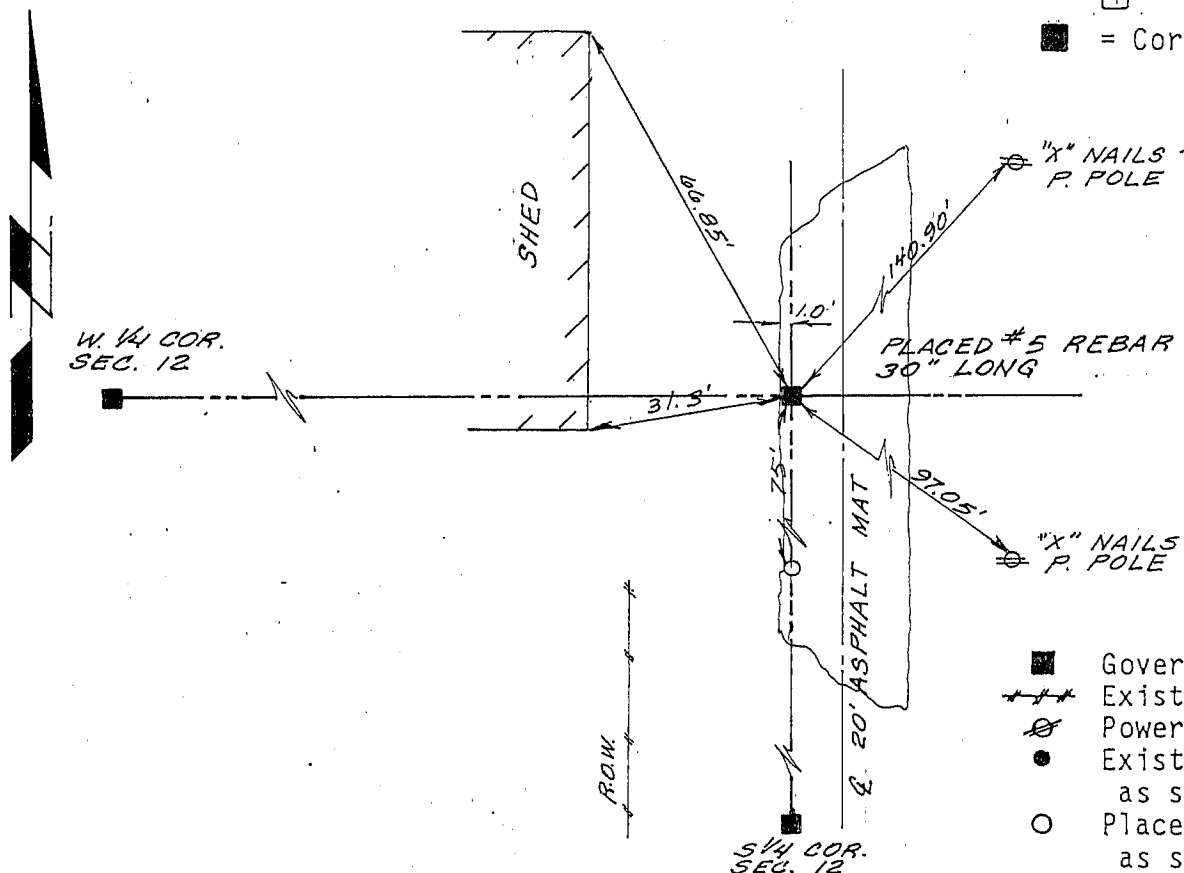
SECTION 12 TOWNSHIP 1N RANGE 2W CORNER CENTER

EVIDENCE: NONE

MONUMENT: Found Placed
 METHOD: Accepted Existing Location
 Accepted Occupation
 Lost Corner Porportionate Methods



= Corner Location



LEGEND

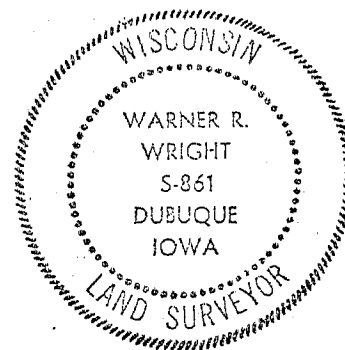
- Government Corner
- Existing Fence Lines
- ⊗ Power Pole
- Existing Iron Pipe as shown
- Placed Rebar as shown

HISTORY & OTHER INFORMATION: CORNER SET BY SUBDIVIDING SECTION.

I, WARNER WRIGHT, hereby certify that the corner location shown hereon this record was determined by me or under my direction and control and that this U.S. Public Land Survey Monument Record is correct and complete to the best of my knowledge and belief.

12-16-87
Date

Warner R. Wright
Registered Land Surveyor
No. 861



W ASSOCIATES P.C.
 3210 St. Joseph Dr., R.R.#2 • Dubuque, IA 52001 • (319) 566-2484
 P.O. Box 275 • Galena, IL 61036 • (815) 777-0359

Title MONUMENT RECORD SEC. 12, T. 1N, R. 2W., 4th P.M.		Sheet 1 of 1
Date 8-6-87	Scale 1" = 30'	Drawing No.
Drawn S.M.D.	Field Book WI-1-85	
Reviewed W.W.	Revision	