

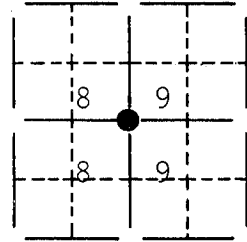
U. S. PUBLIC LAND SURVEY MONUMENT RECORD

FOR Grant COUNTY, WISCONSIN

Note: This form is intended and designed to fulfill all requirements of Wisconsin Administrative Code, Chapter A-E7.08, U.S. Public Land Survey Monument Record (3) (a) (b) (c) (d) (e) (f) (g) (h) (i). Use additional sheet if necessary.

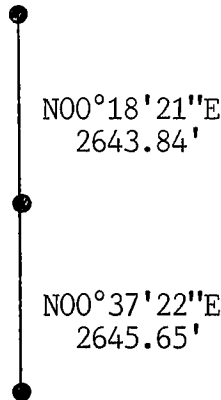
(a) The section, one quarter corner common to sections 8, 9,
 Township(s) 01 N, Range(s) 02 W

State plane coordinates: N 209,495.8596
 E 1,832,307.4910

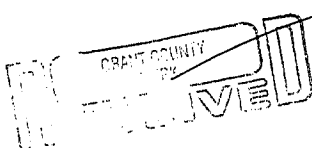
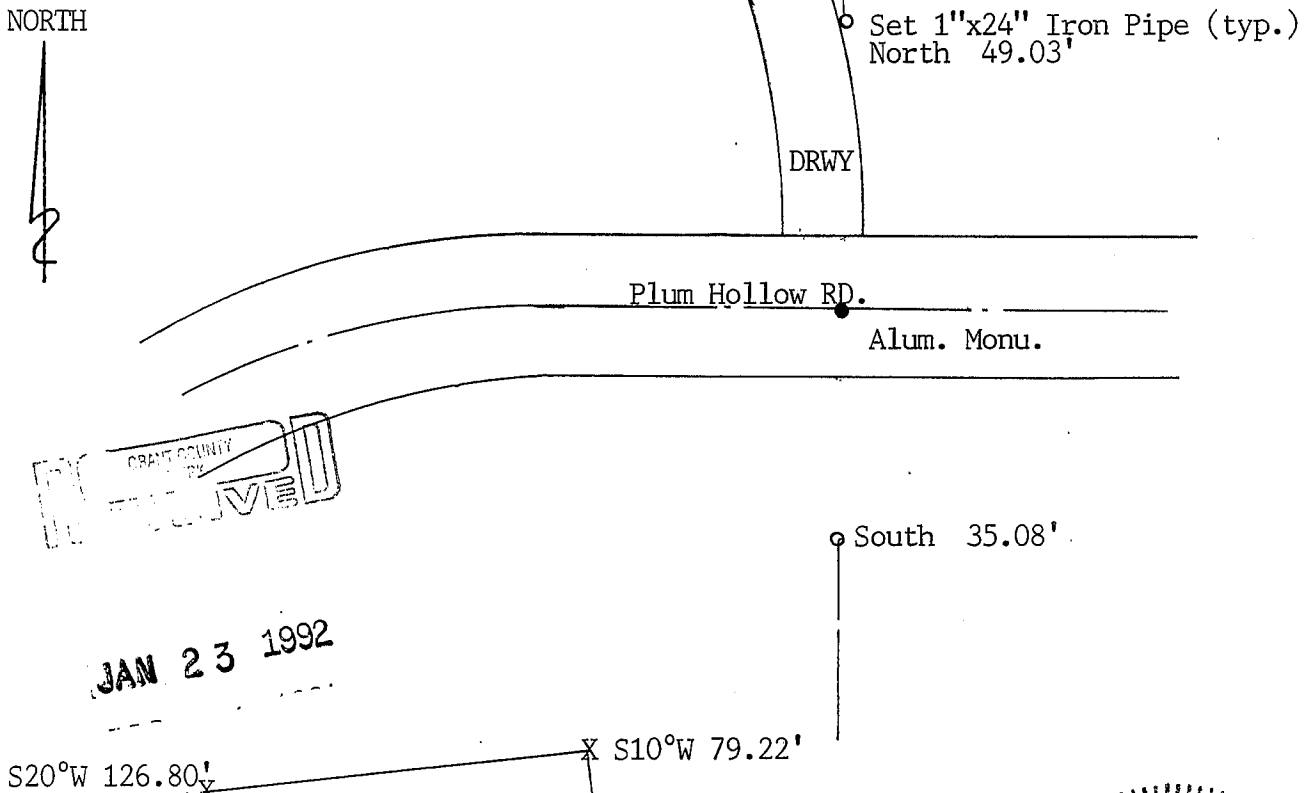


(b) (f) (g) (h) Description of monument found at this corner and if it was accepted, state all evidence (material, testimonial, occupational, plats, records, other monuments) used as a basis for accepting. If not accepted or nothing was found, state evidence used as basis for establishing location and what was set. If reestablished through lost corner proportionate methods, indicate all monuments, distances and directions used.

Found and accepted 3/4" Iron Bar at the W1/4 corner of Sec. 9 .
 Replaced Bar with WI D.O.T. Alum. Monument.



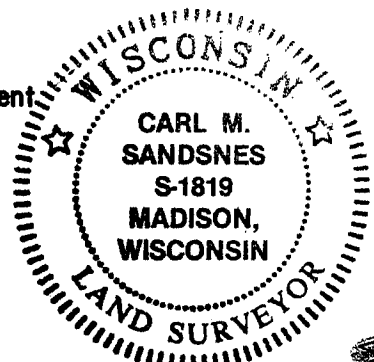
(c) (d) (e) Plan view of corner with ties to at least 4 witness monuments. If in disagreement with previously established corner, show the distances between the two corners and also indicate ties to disputed corner.



JAN 23 1992

(i) I certify that the corner location on this record was determined by me or under my direction and control and that this U.S. Public Land Survey Monument Record is correct and complete to the best of my knowledge and belief.

[Signature] Date Oct 30, 1991



Filed for record in Grant County Surveyor's Office on _____

36

INDEX #