

U.S. PUBLIC LAND SURVEY MONUMENT RECORD - GRANT COUNTY, WI

Section 8, Town 1 North Range 2 West, Town of Jamestown (a)

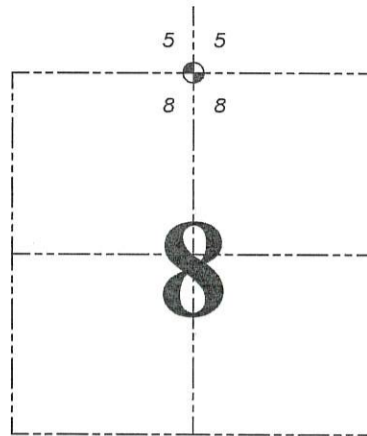
NOTE: This form is intended and designed to fulfill all requirements of the Wisconsin Administrative Code Chapter A-E 7.08, U.S. Public Land Survey Monument Record (3) (a) (b) (c) (d) (e) (f) (g) (h) (i).

CERTIFICATE: (i)

I, Aaron J. Austin, Wisconsin Professional Land Surveyor, do hereby certify that the corner location on this record was determined by me and/or under my direct supervision and that this U.S. Public Land Survey Monument Record is correct and complete to the best of my knowledge and belief.

Dated this 12th day of December, 2018.

Aaron J. Austin
 Aaron J. Austin, S-2922
 AUSTIN
 S-2922
 LANCASTER
 WI
 LAND SURVEYOR



⊕ = CORNER LOCATION

HISTORY OF CORNER ESTABLISHMENT:

Lucius Lyon set the original corner in 1832. Larry Austin set a 3/4" rebar with a Grant County Aluminum Cap and prepared a Survey Monument Record dated 1/16/2002

DESCRIPTION OF CORNER EVIDENCE FOUND: (b) (f) (g) (h)

I found the monument set by Austin and one witness monument. I set three additional witness monuments after I verified the corner's location with G.P.S. and E.D.M. methods.

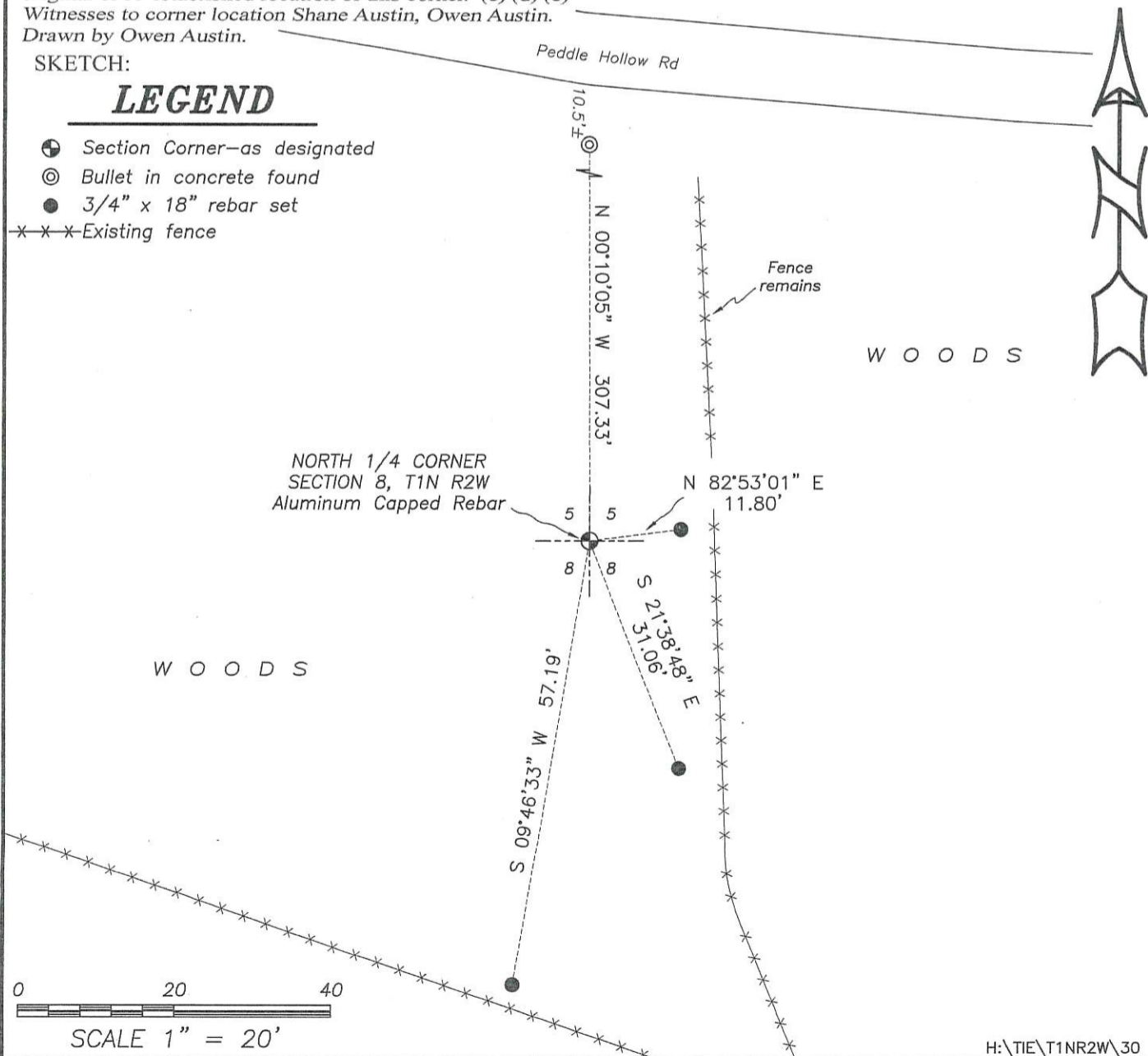
DESCRIPTION OF CORNER AND WITNESS MONUMENTS: references and accessories used to perpetuate the original or re-established location of this corner. (c) (d) (e)

Witnesses to corner location Shane Austin, Owen Austin.
 Drawn by Owen Austin.

SKETCH:

LEGEND

- ⊕ Section Corner—as designated
- ⊙ Bullet in concrete found
- 3/4" x 18" rebar set
- x-x-x Existing fence



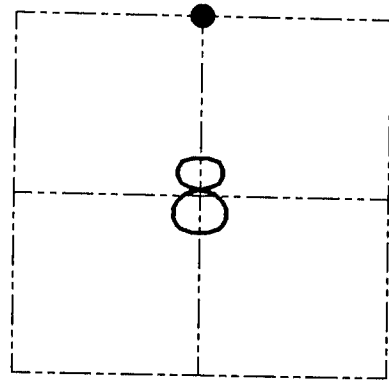
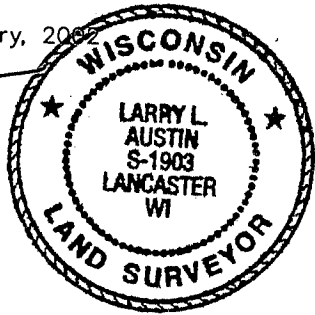
U.S. PUBLIC LAND SURVEY MONUMENT RECORD – GRANT COUNTY, WI
 Section 8, Town 1 North Range 2 West, Town of Jamestown

CERTIFICATE

I, Larry L. Austin, do hereby certify that the corner location on this record was determined by me and/or under my direct supervision and that this U.S. public land survey monument record is correct and complete to the best of my knowledge and belief.

Dated this 16th day of January, 2002

Larry L. Austin
 Larry L. Austin S-1903



● = CORNER LOCATION

HISTORY OF CORNER ESTABLISHMENT

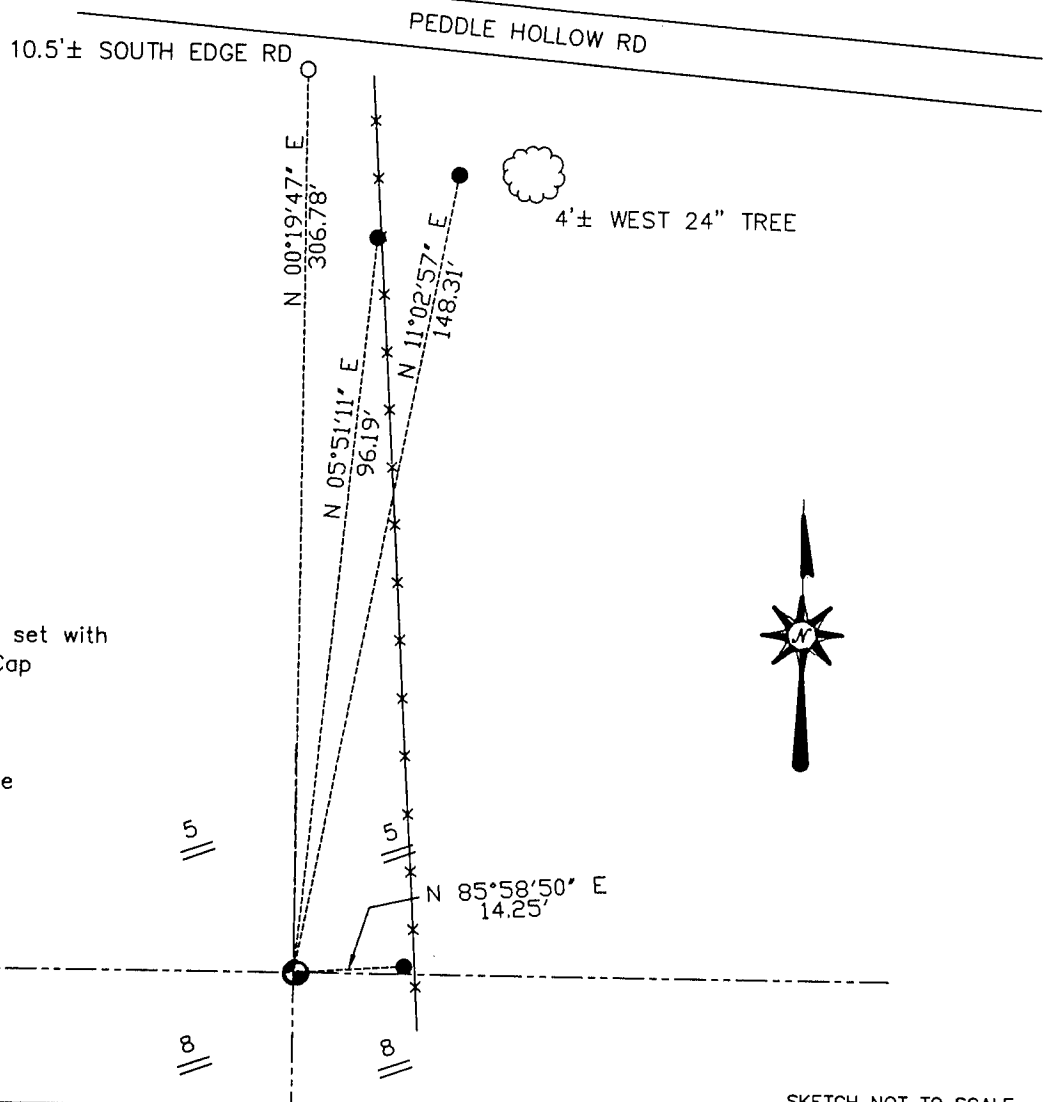
Corner was originally set in 1832 by Lyon. In 1853 Overtan tied to the corner. In 1896 Sampson also tied to the corner. No mention of monument or witness trees.

DESCRIPTION OF CORNER EVIDENCE FOUND

Corner was reset proportionally between the northwest and northeast corners. Verified their location using EDM and GPS methods.

DESCRIPTION OF CORNER AND WITNESS MONUMENTS, references and accessories used to perpetuate the original or re-established location of this corner. Witnesses to the corner location Bobby Sedgwick

SKETCH:



LEGEND

- Number 6 x 24" iron bar set with Grant County Aluminum Cap
- 1" x 12" Iron Pipe tie
- x— Approximate existing fence
- Bullet in conc. fnd.

SKETCH NOT TO SCALE

AUSTIN ENGINEERING, LLC

4211 HWY 81 EAST, LANCASTER, WI 53813
 PHONE 608-723-6363 FAX 608-723-6702

FIELDBOOK: 95-02
 G: \T2NR2W\T2NR2W
 C: \CTA\TIE\T1NR2W\T1NR2W
 CREW: BS-SB-SA-DM-KW

DRAWN BY: CT AUSTIN
 APPROVED: LL AUSTIN

CORNER NUMBER **30**