

12027

U.S. PUBLIC LAND SURVEY MONUMENT RECORD - GRANT COUNTY, WI

Section 4, Town 1 North Range 2 West, Town of Jamestown (a)

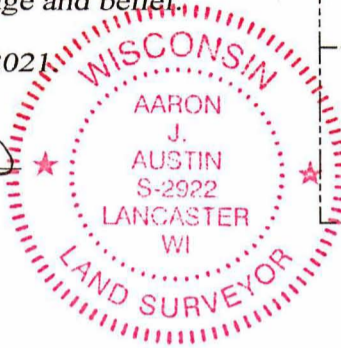
NOTE: This form is intended and designed to fulfill all requirements of the Wisconsin Administrative Code Chapter A-E 7.08, U.S. Public Land Survey Monument Record (3) (a) (b) (c) (d) (e) (f) (g) (h) (i).

CERTIFICATE: (i)

I, Aaron J. Austin, Wisconsin Professional Land Surveyor, do hereby certify that the corner location on this record was determined by me and/or under my direct supervision and that this U.S. Public Land Survey Monument Record is correct and complete to the best of my knowledge and belief.

Dated this 30th day of November, 2021

Aaron J. Austin
Aaron J. Austin, S-2922



Grant County Coordinates:
NAD 83 (2011)
Northing: 426,304.81
Easting: 848,051.56

HISTORY OF CORNER ESTABLISHMENT:

Original corner was set in 1832 by Lucius Lyon.
Bruce Bowden set a 1/2" Railroad Spike and prepared a Survey Monument Record dated 10/4/1986.
Carl Sanders found a 1" Square Iron Bar and prepared a Survey Monument Record dated 10/30/1991.
Stan King set a P.K. Nail on Certified Survey Map Number 1678 dated 6/10/2013.

DESCRIPTION OF CORNER EVIDENCE FOUND: (b) (f) (g) (h)

I found a P.K. Nail King set. I set four witness corners after I verified the Monument's location with G.P.S. and E.D.M. methods

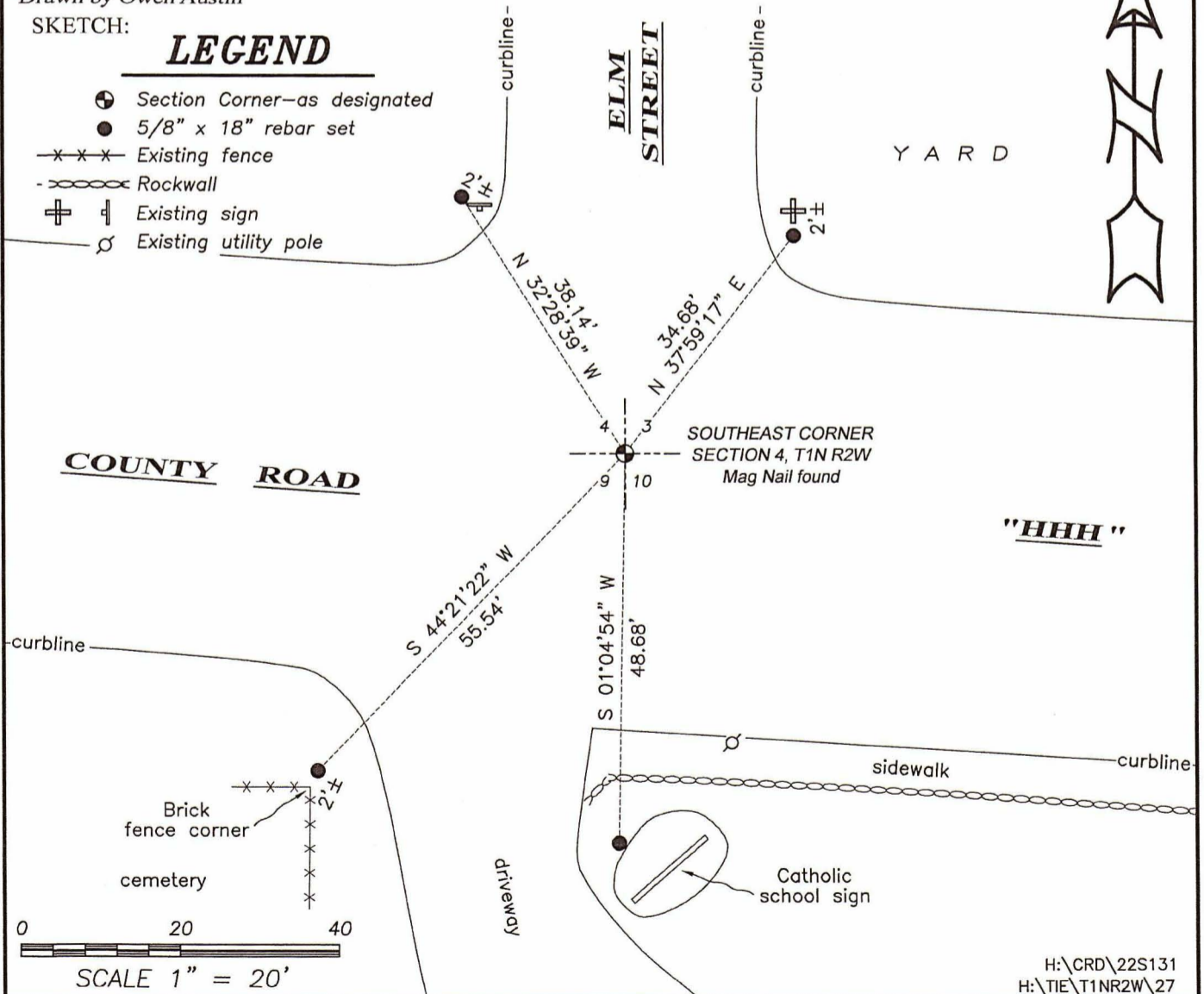
DESCRIPTION OF CORNER AND WITNESS MONUMENTS, references and accessories used to perpetuate the original or re-established location of this corner. (c) (d) (e)

Witnesses to corner location Shane Austin, Owen Austin, Tanner Austin.
Drawn by Owen Austin

SKETCH:

LEGEND

- Section Corner—as designated
- 5/8" x 18" rebar set
- Existing fence
- Rockwall
- Existing sign
- Existing utility pole



SCALE 1" = 20'

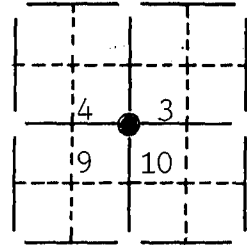
H:\CRD\22S131
H:\TIE\T1NR2W\27

U. S. PUBLIC LAND SURVEY MONUMENT RECORD FOR GRANT COUNTY, WISCONSIN

Note: This form is intended and designed to fulfill all requirements of Wisconsin Administrative Code, Chapter A-E7.08, U.S. Public Land Survey Monument Record (3) (a) (b) (c) (d) (e) (f) (g) (h) (i). Use additional sheet if necessary.

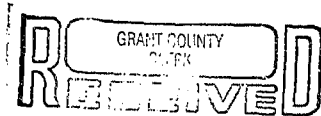
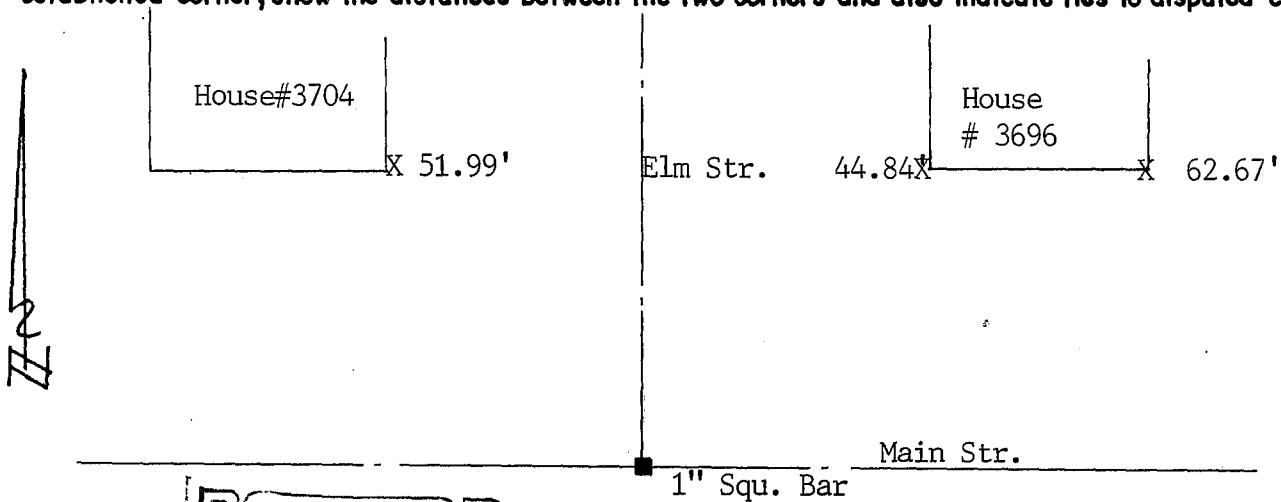
(a) The section, one quarter corner common to sections 3,4,9,10,
Township(s) 01 N, Range(s) 02 W

State plane coordinates: N 212,250.2154
E 1,837,607.8612




(b) (f) (g) (h) Description of monument found at this corner and if it was accepted, state all evidence (material, testimonial, occupational, plats, records, other monuments) used as a basis for accepting. If not accepted or nothing was found, state evidence used as basis for establishing location and what was set. If reestablished through lost corner proportionate methods, indicate all monuments, distances and directions used.
Found and accepted an 1" Square Iron Bar at the SE Corner of Sec. 4.


(c) (d) (e) Plan view of corner with ties to at least 4 witness monuments. If in disagreement with previously established corner, show the distances between the two corners and also indicate ties to disputed corner.



JAN 23 1992

 Top Nut on Hydrant
34.94'

(i) I certify that the corner location on this record was determined by me or under my direction and control and that this U.S. Public Land Survey Monument Record is correct and complete to the best of my knowledge and belief.


Signature

OCT 30 1991
Date



Filed for record in Grant County Surveyor's Office on _____



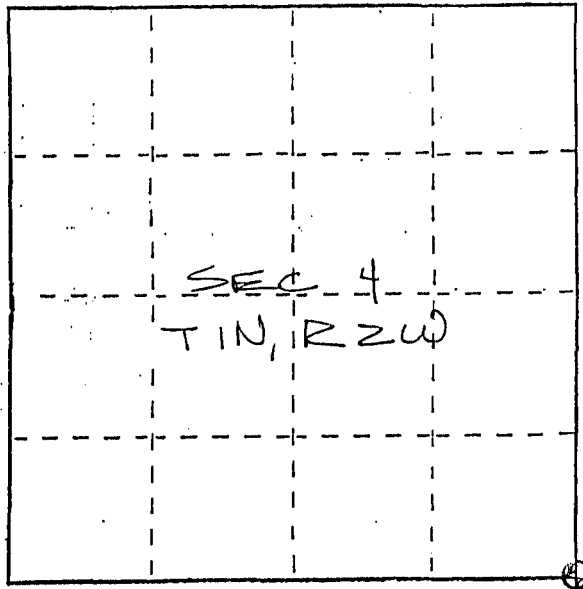
U. S. PUBLIC LAND SURVEY MONUMENT RECORD

INSTRUCTIONS: This record shall show the location of the corner and shall include all of the following nine elements (a through i).

- (a) Identify the corner by reference to the U.S. public land survey system.

⊕ = Corner monument restored.

Southeast corner of Section 4,
Town 1 North, Range 2 West,
Jamestown Township, Grant county,
Wisconsin.



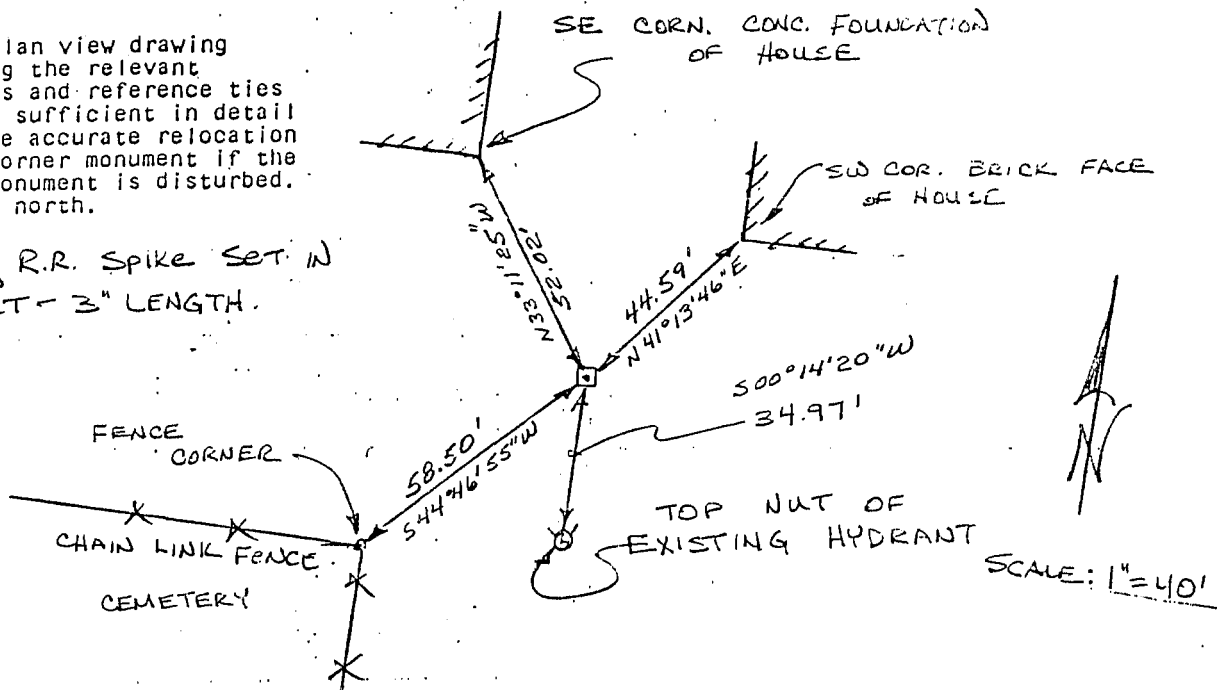
- (b) Describe any record evidence, monument evidence, occupational evidence, testimonial evidence or any other material evidence you considered, and whether the monument was found or placed.

Corner reset from ties to a survey of the cemetery in the NW $\frac{1}{4}$ of the NW $\frac{1}{4}$ of Sec 9, as proven from the pipe monuments that are concreted in place at the corners. The survey was performed by Mr. Homer Ralph in 1956 and pre-dates the subdivisions and other surveys that tie back to various locations in this intersection.

- (c) In the plan view drawing below, provide reference ties to at least 4 witness monuments, or, if the location is within a municipality, to at least 2 witness monuments. (Witness monuments shall be made of concrete, natural stone, iron or other equally durable material.) Describe witness monuments.

- (d) Show a plan view drawing depicting the relevant monuments and reference ties which is sufficient in detail to enable accurate relocation of the corner monument if the corner monument is disturbed. Indicate north.

⊠ 1/2" sq R.R. SPIKE SET IN ASPHALT - 3" LENGTH.



- (e) Describe any material discrepancy between the location of the corner as restored or reestablished and the location of that corner as previously restored or reestablished by distance and direction. Show the discrepancy on the plan view drawing under (d), above. Show the distances between the corner as previously restored or reestablished and (1) the corner as restored or reestablished, and (2) to at least 2 of the witness monuments shown on the drawing in (d), above.

The different subdivisions and surveys that I checked as tied back to this corner gave locations from 25' South of this point to 26' North of it and from 8' West to 5' East. As the cemetery is only 60'+- from this corner, it is my contention that it is the nearest, best and most permanent record of the location of this section corner. Also the monuments agree with the recorded dimensions on the deeds, signifying that they have not been tampered with.

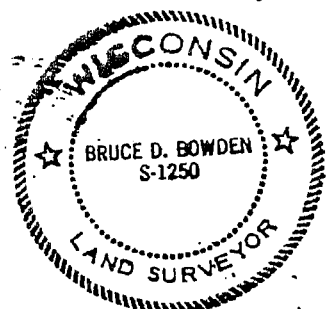
- (f) Was the corner restored through acceptance of (1) an obliterated evidence location, or, (2) a found perpetuated location?

(2) A found perpetuated location

- (g&h) Was the corner reestablished through lost corner proportionate methods? If so, show the method, including the directions and distances to other public land survey corners used as evidence or used for proportioning in determining the corner location?

No.

Affix Land Surveyor Seal



- (i) I, Bruce D. Bowden (type or print name) certify that the corner location shown on this record was determined by me or under my direction and control and that this U.S. Public Land Survey Monument Record is correct and complete to the best of my knowledge and belief.

Bruce D. Bowden
Signature

10-4-86
Date

U. S. PUBLIC LAND SURVEY MONUMENT RECORD

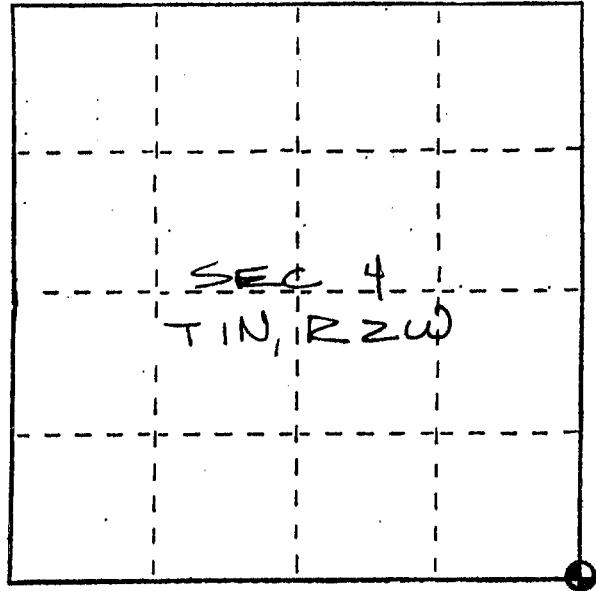
INSTRUCTIONS :

This record shall show the location of the corner and shall include all of the following nine elements (a through i).

- (a) Identify the corner by reference to the U.S. public land survey system.

⊙ = Corner monument restored.

Southeast corner of Section 4,
Town 1 North, Range 2 West,
Jamestown Township, Grant county,
Wisconsin.



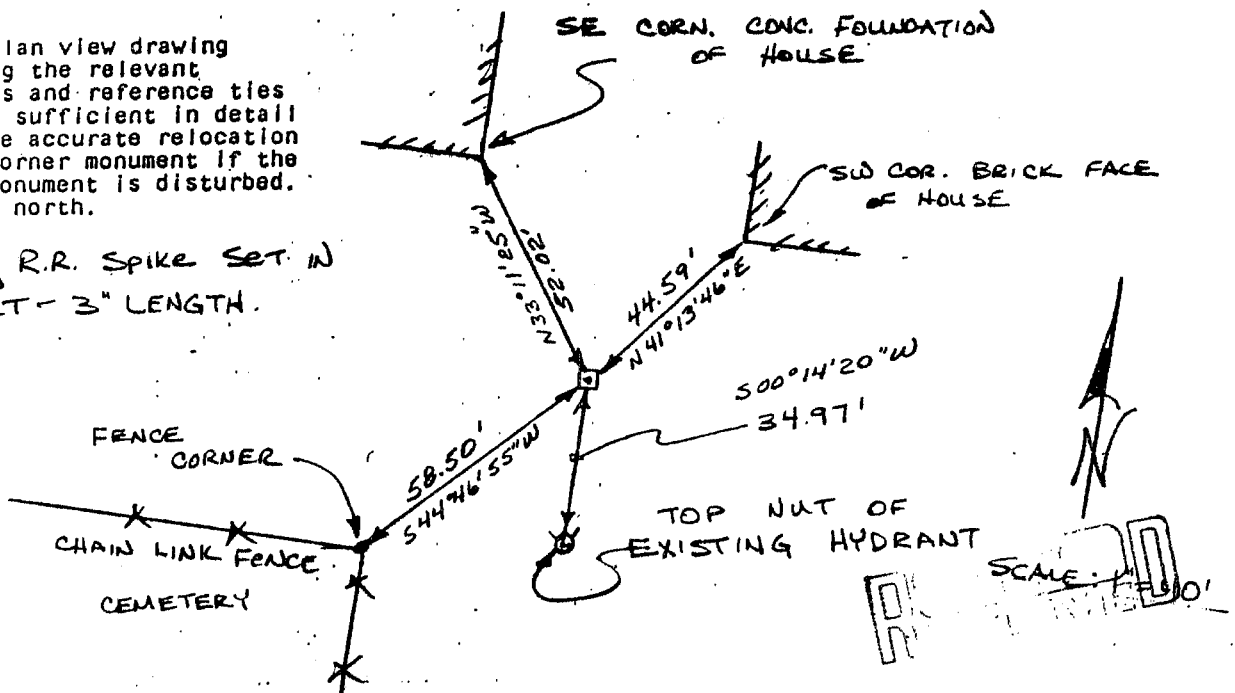
- (b) Describe any record evidence, monument evidence, occupational evidence, testimonial evidence or any other material evidence you considered, and whether the monument was found or placed.

Corner reset from ties to a survey of the cemetery in the NW $\frac{1}{4}$ of the NW $\frac{1}{4}$ of Sec 9, as proven from the pipe monuments that are concreted in place at the corners. The survey was performed by Mr. Homer Ralph in 1956 and pre-dates the subdivisions and other surveys that tie back to various locations in this intersection.

- (c) In the plan view drawing below, provide reference ties to at least 4 witness monuments, or, if the location is within a municipality, to at least 2 witness monuments. (Witness monuments shall be made of concrete, natural stone, iron or other equally durable material.) Describe witness monuments.

- (d) Show a plan view drawing depicting the relevant monuments and reference ties which is sufficient in detail to enable accurate relocation of the corner monument if the corner monument is disturbed. Indicate north.

⊠ $\frac{1}{2}$ " sq R.R. SPIKE SET IN ASPHALT - 3" LENGTH.



FEB 16 1987

027

(e) Describe any material discrepancy between the location of the corner as restored or reestablished and the location of that corner as previously restored or reestablished by distance and direction. Show the discrepancy on the plan view drawing under (d), above. Show the distances between the corner as previously restored or reestablished and (1) the corner as restored or reestablished, and (2) to at least 2 of the witness monuments shown on the drawing in (d), above.

The different subdivisions and surveys that I checked as tied back to this corner gave locations from 25' South of this point to 26' North of it and from 8' West to 5' East. As the cemetery is only 60'+- from this corner, it is my contention that it is the nearest, best and most permanent record of the location of this section corner. Also the monuments agree with the recorded dimensions on the deeds, signifying that they have not been tampered with.

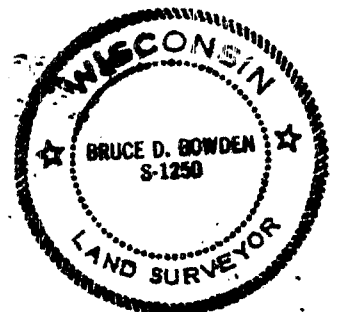
(f) Was the corner restored through acceptance of (1) an obliterated evidence location, or, (2) a found perpetuated location?

(2) A found perpetuated location

(g&h) Was the corner reestablished through lost corner proportionate methods? If so, show the method, including the directions and distances to other public land survey corners used as evidence or used for proportioning in determining the corner location?

No.

Affix Land Surveyor Seal



(i) I, Bruce D. Bowden
(type or print name) certify that the corner location shown on this record was determined by me or under my direction and control and that this U.S. Public Land Survey Monument Record is correct and complete to the best of my knowledge and belief.

Bruce D. Bowden
Signature

Date