

GRANT COUNTY
U.S. PUBLIC LAND SURVEY MONUMENT RECORD

INSTRUCTIONS: THIS RECORD SHALL SHOW THE LOCATION OF THE CORNER AND SHALL INCLUDE ALL OF THE FOLLOWING ELEMENTS (A THROUGH I).

(A) IDENTIFY THE CORNER AS REFERENCED TO THE U.S. PUBLIC LAND SURVEY SYSTEM

■ = CORNER MONUMENT RESTORED

WITNESS TO CORNER LOCATION:

ERIC J. SCHOOT

GEOGRAPHIC COORDINATES,
NAD 83 (2011) ADJUSTMENT:

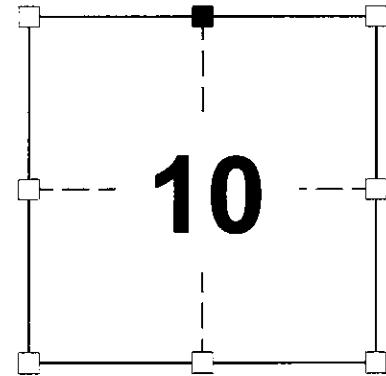
LATITUDE: 42° 34' 51.16585"

LONGITUDE: 90° 35' 35.36269"

WISCONSIN COORDINATES REFERENCE SYSTEM (WISCRS),
GRANT COUNTY, NAD 83 (2011) ADJUSTMENT:

NORTHING: 426,361.384

EASTING: 850,711.877

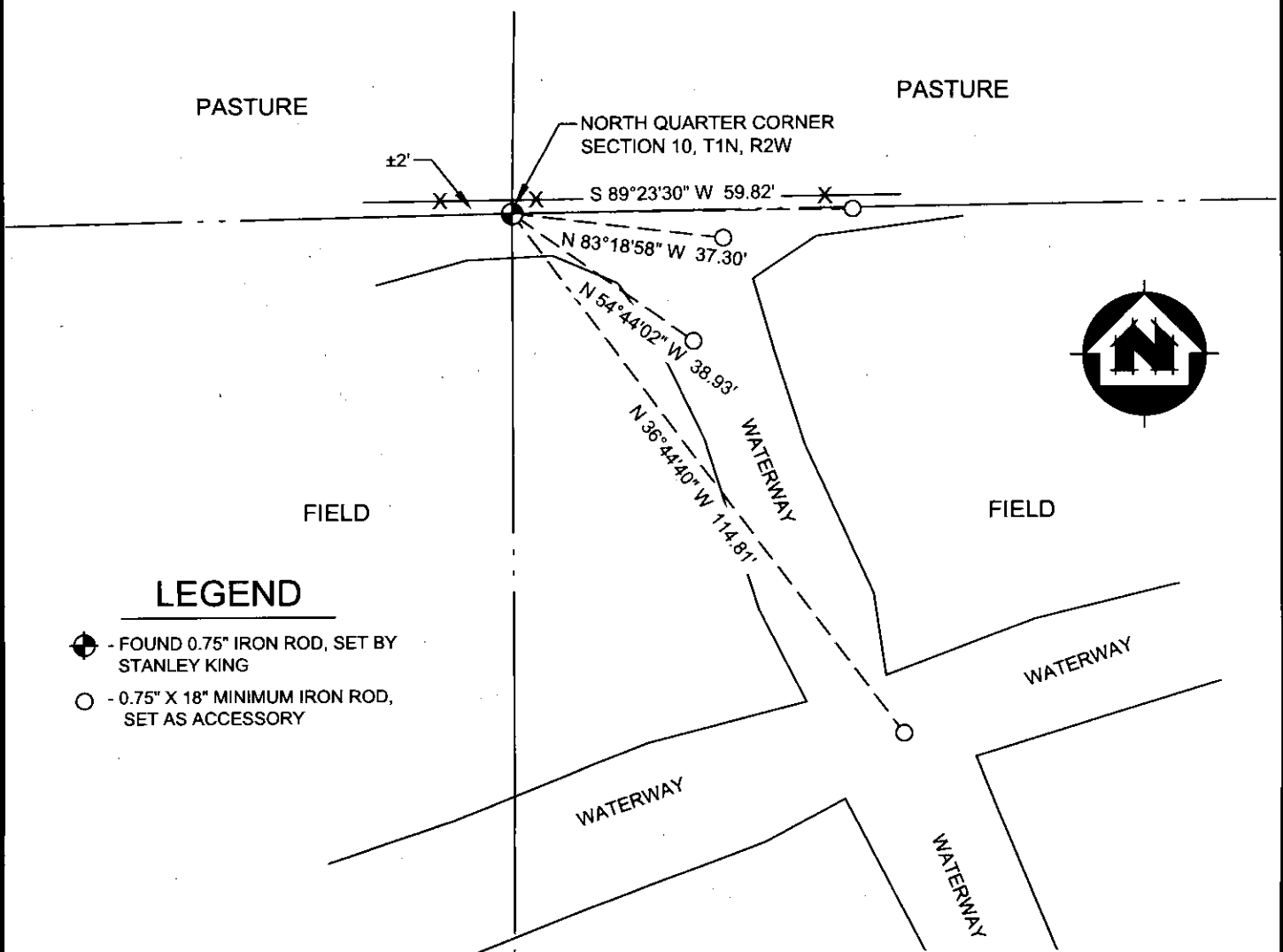


SECTION 10
TOWNSHIP 1 NORTH, RANGE 2 WEST
TOWN OF JAMESTOWN

(B) DESCRIBE ANY RECORD EVIDENCE, MONUMENT EVIDENCE, OCCUPATIONAL EVIDENCE, TESTIMONIAL EVIDENCE OR ANY OTHER MATERIAL EVIDENCE YOU CONSIDERED, AND WHETHER THE MONUMENT WAS FOUND OR PLACED.
I COULD FIND NO MONUMENTS OR BEARING TREES FROM THE ORIGINAL GOVERNMENT SURVEY. I RECOVERED A 0.75" IRON ROD BELIEVE TO BE SET BY STANLEY KING, S-2001. THIS CORNER HAS BEEN USED BY SEVERAL OTHER SURVEYS IN THIS AREA. CORNER FALLS CLOSE TO A OLD FENCE LINE. THIS LOCATION WAS ACCEPTED AS THE BEST AVAILABLE EVIDENCE OF THE ORIGINAL GOVERNMENT CORNER AND THE MONUMENT WAS LEFT IN PLACE.

(C) IN THE PLAN VIEW DRAWING BELOW, PROVIDE REFERENCE TIES TO AT LEAST 4 WITNESS MONUMENTS. WITNESS MONUMENTS SHALL BE MADE OF CONCRETE, NATURAL STONE, IRON. BEARING TREES OR ANY OTHER EQUALLY DURABLE MATERIAL. DEPICT THE RELEVANT MONUMENTS AND REFERENCE TIES WITH SUFFICIENT DETAIL TO ENABLE ACCURATE RELOCATION OF THE CORNER IF THE CORNER MONUMENT IS DISTURBED.

(D)



LEGEND

- - FOUND 0.75" IRON ROD, SET BY STANLEY KING
- - 0.75" X 18" MINIMUM IRON ROD, SET AS ACCESSORY

C:\GIS\Projects\12026\12026.dwg 11/14/2012 10:58:11 AM

(E) DESCRIBE ANY MATERIAL DISCREPANCY BETWEEN THE LOCATION OF THE CORNER AS RESTORED OR REESTABLISHED AND THE LOCATION OF THAT CORNER AS PREVIOUSLY RESTORED OR REESTABLISHED BY DISTANCE AND DIRECTION. SHOW THE DISCREPANCY ON THE PLAN VIEW DRAWING UNDER (D), ABOVE. SHOW THE DISTANCE BETWEEN THE CORNER AS PREVIOUSLY RESTORED OR REESTABLISHED AND (1) THE CORNER AS RESTORED OR REESTABLISHED, AND (2) TO AT LEAST 2 OF THE WITNESS MONUMENTS SHOWN ON THE DRAWING IN (D) ABOVE.

N/A

(F) WAS THE CORNER RESTORED THROUGH ACCEPTANCE OF (1) AN OBLITERATED EVIDENCE LOCATION, OR (2) A FOUND PERPETUATED LOCATION?

(2) A FOUND PERPETUATED LOCATION.

(G&H) WAS THE CORNER REESTABLISHED THROUGH LOST CORNER PROPORTIONATE METHODS? IF SO, SHOW THE METHOD, INCLUDING THE DIRECTIONS AND DISTANCES TO OTHER PUBLIC LAND SURVEY CORNERS USED AS EVIDENCE OR USED PROPORTIONING IN DETERMINING THE CORNER LOCATION.

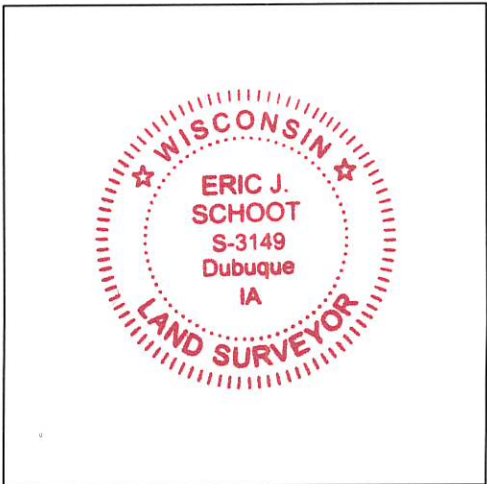
N/A

CORNER HISTORY:

THE ORIGINAL GOVERNMENT CORNER WAS ESTABLISHED BY L. LYON IN THE FIRST QUARTER OF 1832.

IN A SURVEY FOR CERTIFIED SURVEY MAP NUMBER 350, DATED JUNE 18, 1993, STANLEY KING SET A 0.75" IRON ROD ALONG A FENCE LINE. SINCE THAT TIME, NUMEROUS SURVEYS HAVE UTILIZED THIS MONUMENT.

AFFIX LAND SURVEYOR SEAL



I, ERIC J. SCHOOT, P.L.S. - 3149, CERTIFY THAT THE CORNER LOCATION SHOWN ON THIS RECORD WAS DETERMINED BY ME OR UNDER MY DIRECTION AND CONTROL AND THAT THIS U.S. PUBLIC LAND SURVEY MONUMENT IS CORRECT AND COMPLETE TO THE BEST OF MY KNOWLEDGE AND BELIEF.

Eric J. Schoot 1/16/20
SIGNATURE DATE