

GRANT COUNTY
U.S. PUBLIC LAND SURVEY MONUMENT RECORD

INSTRUCTIONS: THIS RECORD SHALL SHOW THE LOCATION OF THE CORNER AND SHALL INCLUDE ALL OF THE FOLLOWING ELEMENTS (A THROUGH I).

(A) IDENTIFY THE CORNER AS REFERENCED TO THE U.S. PUBLIC LAND SURVEY SYSTEM

■ = CORNER MONUMENT RESTORED

WITNESS TO CORNER LOCATION:

ERIC J. SCHOOT

GEOGRAPHIC COORDINATES,
NAD 83 (2011) ADJUSTMENT:

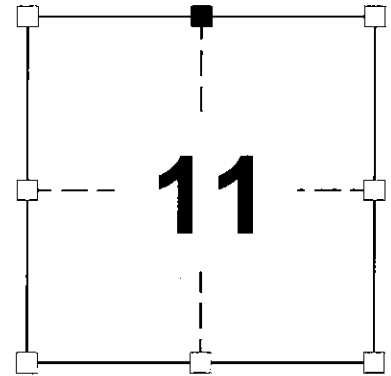
LATITUDE: 42° 34' 51.26185"

LONGITUDE: 90° 34' 24.33331"

WISCONSIN COORDINATES REFERENCE SYSTEM (WISCRS),
GRANT COUNTY, NAD 83 (2011) ADJUSTMENT:

NORTHING: 426,384.703

EASTING: 856,026.092



SECTION 11
TOWNSHIP 1 NORTH, RANGE 2 WEST
TOWN OF JAMESTOWN

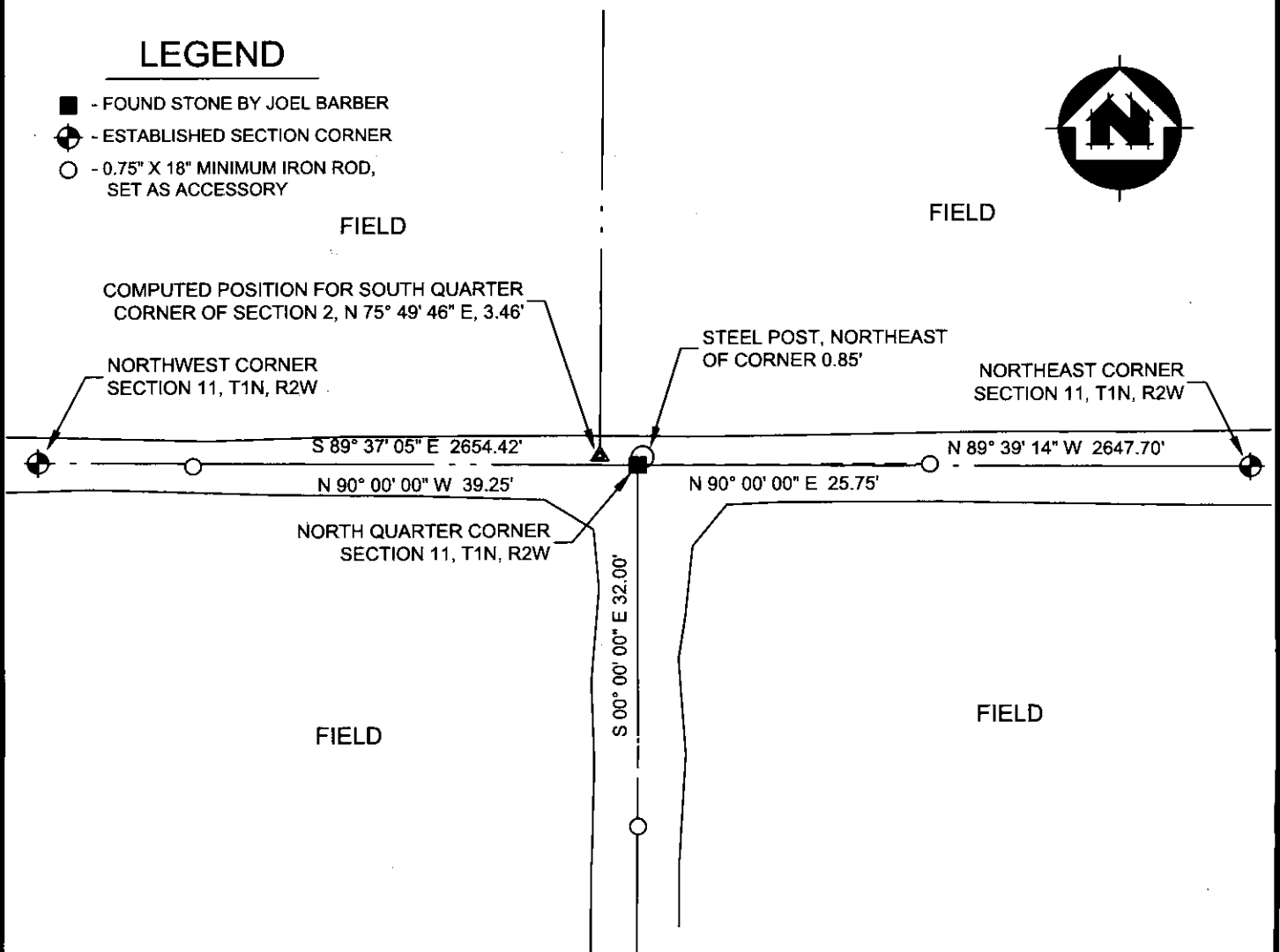
(B) DESCRIBE ANY RECORD EVIDENCE, MONUMENT EVIDENCE, OCCUPATIONAL EVIDENCE, TESTIMONIAL EVIDENCE OR ANY OTHER MATERIAL EVIDENCE YOU CONSIDERED, AND WHETHER THE MONUMENT WAS FOUND OR PLACED. I COULD FIND NO MONUMENTS OR BEARING TREES FROM THE ORIGINAL GOVERNMENT SURVEY. I RECOVERED 3"x 18" STONE AT AN ANGLE BELIEVE TO BE SET BY JOEL BARBER IN 1867 OR 1868 LOCATED NEAR A STEEL POST. THE STONE FALLS IN A INTERSECTION OF FIELD LINES EAST-WEST AND FROM THE SOUTH. I ACCEPTED THIS LOCATION AS THE BEST AVAILABLE EVIDENCE OF THE ORIGINAL GOVERNMENT CORNER. I LEFT STONE IN PLACE, AND SET A 0.75" IRON ROD DIRECTLY SOUTH OF STONE TO AID IN MAGNETIC LOCATION.

(C) IN THE PLAN VIEW DRAWING BELOW, PROVIDE REFERENCE TIES TO AT LEAST 4 WITNESS MONUMENTS. WITNESS MONUMENTS SHALL BE MADE OF CONCRETE, NATURAL STONE, IRON. BEARING TREES OR ANY OTHER EQUALLY DURABLE MATERIAL. DEPICT THE RELEVANT MONUMENTS AND REFERENCE TIES WITH SUFFICIENT DETAIL TO ENABLE ACCURATE RELOCATION OF THE CORNER IF THE CORNER MONUMENT IS DISTURBED.

(D)

LEGEND

- - FOUND STONE BY JOEL BARBER
- ⊙ - ESTABLISHED SECTION CORNER
- - 0.75" X 18" MINIMUM IRON ROD, SET AS ACCESSORY



(E) DESCRIBE ANY MATERIAL DISCREPANCY BETWEEN THE LOCATION OF THE CORNER AS RESTORED OR REESTABLISHED AND THE LOCATION OF THAT CORNER AS PREVIOUSLY RESTORED OR REESTABLISHED BY DISTANCE AND DIRECTION. SHOW THE DISCREPANCY ON THE PLAN VIEW DRAWING UNDER (D), ABOVE. SHOW THE DISTANCE BETWEEN THE CORNER AS PREVIOUSLY RESTORED OR REESTABLISHED AND (1) THE CORNER AS RESTORED OR REESTABLISHED, AND (2) TO AT LEAST 2 OF THE WITNESS MONUMENTS SHOWN ON THE DRAWING IN (D) ABOVE.

THIS CORNER WAS REESTABLISHED BY JOHN M. TRANMER, S-2215 FOR CERTIFIED SURVEY MAP NUMBER 979, DATED JUNE 27, 2003. HE NEVER SET A MONUMENT AT THIS CORNER. I BELIEVE THIS CORNER WAS SET MID POINT ON LINE BETWEEN SECTION CORNERS. THERE ARE NO DISTANCE OR DIRECTION SHOWN ON MAP TO SHOW REESTABLISHMENT.

(F) WAS THE CORNER RESTORED THROUGH ACCEPTANCE OF (1) AN OBLITERATED EVIDENCE LOCATION, OR (2) A FOUND PERPETUATED LOCATION?

(2) A FOUND PERPETUATED LOCATION.

(G&H) WAS THE CORNER REESTABLISHED THROUGH LOST CORNER PROPORTIONATE METHODS? IF SO, SHOW THE METHOD, INCLUDING THE DIRECTIONS AND DISTANCES TO OTHER PUBLIC LAND SURVEY CORNERS USED AS EVIDENCE OR USED PROPORTIONING IN DETERMINING THE CORNER LOCATION.

N/A

CORNER HISTORY:

THE ORIGINAL GOVERNMENT CORNER WAS ESTABLISHED BY L. LYON IN THE FIRST QUARTER OF 1832.

IN A SURVEY FOR SECTION 2 NOT DATED, JOEL BARBER NOTES HE SET THIS CORNER IN 1867 OR 1868 AND NO TIES TO CORNER GIVEN.

IN A SURVEY FOR SECTION 11 DATED SEPTEMBER 2, 1878, JOEL BARBER NOTES HE SET THIS CORNER IN A FORMER SURVEY AND NO TIES TO CORNER GIVEN.

IN A SURVEY FOR CERTIFIED SURVEY MAP NUMBER 979, DATED JUNE 27, 2003 BY JOHN TRANMER, SETS THE CENTER OF SECTION AND THE NORTH-SOUTH QUARTER LINE OF SECTION 2. NO TIESHEET FOUND SHOWING THIS CORNER BEING REESTABLISHED.



AFFIX LAND SURVEYOR SEAL

I, ERIC J. SCHOOT, P.L.S. - 3149, CERTIFY THAT THE CORNER LOCATION SHOWN ON THIS RECORD WAS DETERMINED BY ME OR UNDER MY DIRECTION AND CONTROL AND THAT THIS U.S. PUBLIC LAND SURVEY MONUMENT IS CORRECT AND COMPLETE TO THE BEST OF MY KNOWLEDGE AND BELIEF.

Eric J. Schoot 1/16/20
SIGNATURE DATE

