

12039  
and  
12023

Prepare's Name: Kenneth L. Buesing      Address: 1212 Locust St. Dubuque, IA      Telephone: (563) 556-4389

SLSI 9-94

**UNITED STATES PUBLIC LAND SURVEY MONUMENT RECORD**

OF

Land Survey Monuments situated in Section 11, Township 1N, Range 2W, of the Fourth Principal Meridian, GRANT County, Wisconsin, Previously recorded in SEE BELOW in County Recorder's Office.  
(book, page, document number, etc.)

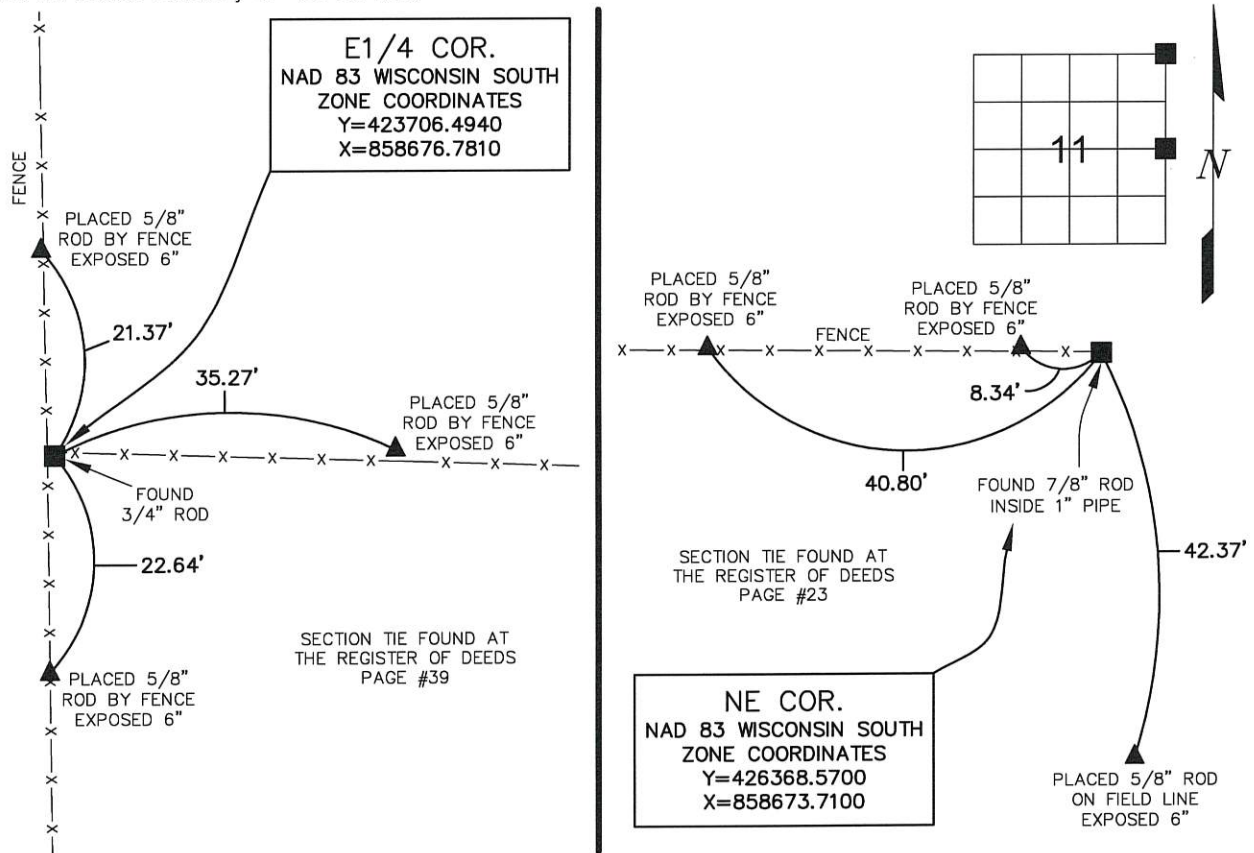
(Show reason for preparing this certificate, the evidence and detailed procedures used in establishing the corner positions and monumentation found or placed.)

Monument Description and Remarks: FOUND 3/4" ROD @ THE E1/4 CORNER. EXPOSED 2"

FOUND 7/8" ROD INSIDE 1" PIPE @ THE NE CORNER. BURIED 6"

**PLAN - VIEW**

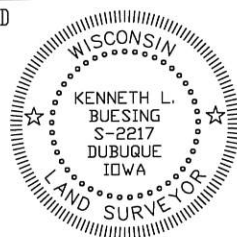
(Show a minimum of three reference ties to durable physical objects, relevant monuments and physical conditions that will enable recovery of the corner.)



I HEREBY CERTIFY THAT THIS LAND SURVEYING DOCUMENT WAS PREPARED AND THE RELATED SURVEY WORK WAS PERFORMED BY ME OR UNDER MY DIRECT PERSONAL SUPERVISION AND THAT I AM A DULY LICENSED LAND SURVEYOR UNDER THE LAWS OF THE STATE OF WISCONSIN.

*Kenneth L. Buesing*      5, April 2018  
KENNETH L. BUESING      (DATE)

LICENSE NUMBER S-2217  
MY LICENSE RENEWAL DATE IS JANUARY 31, 2020



Corners	Section	Twp	Range
W1/4 COR.	11	1N	2W
CENTER	11	1N	2W

**BUESING**  
ASSOCIATES INC.  
ENGINEERS AND SURVEYORS  
1212 LOCUST ST, DUBUQUE, IA  
(563) 556-4389

MONUMENT RECORD

COUNTY: GRANT  
TOWNSHIP: JAMESTOWN

DATE PLOTTED: 3-14-18  
DATE REVISED:

FIELD BOOK # .  
PAGE # SHOT IN

DRAWING  
# 18025-01

# Grant County Certified U.S. Public Land Survey Monument Record

DATUM : NAD83 (2011) WISCORS

GRANT COUNTY COORDINATES

CONTROL IS A COMBINATION OF GPS AND CONVENTIONAL FIELD CONTROL.

NORTH 426368.81

EAST 858673.46

The Southeast corner of Section 2, Town 1 North,  
Range 2 West, Town of Jamestown, Grant County, Wisconsin.

(A) Identify the corner by reference to the U.S. public land survey system.

WITNESS TO CORNER LOCATION:



(E) The corner was restored through acceptance of  
(1) an obliterated evidence location  
(2) a found perpetuated location  
(3) lost corner proportionate methods

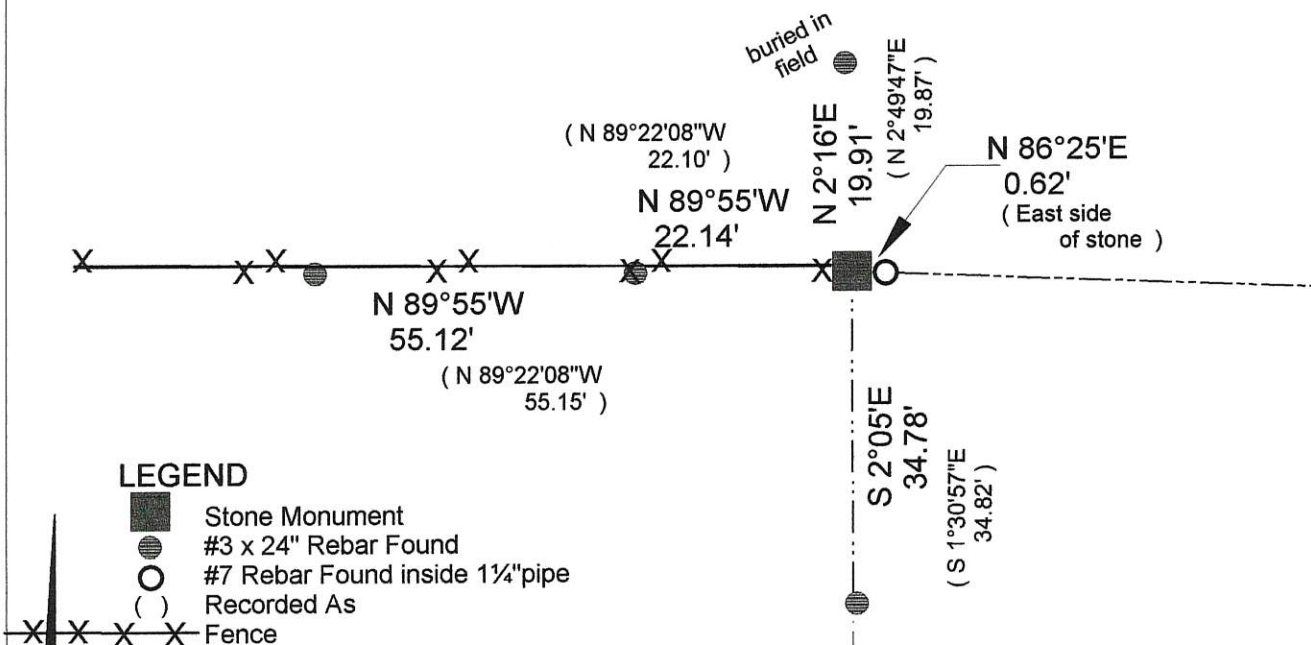
= Corner monument restored or maintained.

## Sec. 2, T 1 N, R 2 W

(B) Describe any record evidence, monument evidence, occupational evidence, testimonial evidence or any other material evidence you considered, and whether the monument was placed or found.

I found and accepted the stone monument set by Joel Barber in 1868 and tied by me in 1987. Two ties were straightened.

(C, D, F, G) Plan view drawing below, provide reference ties to at least 4 witness monuments, or, if the location is within a municipality, to at least 2 witness monuments. Depict the relevant monuments and reference ties in sufficient detail to enable accurate relocation of the corner monument, if disturbed. Indicate North. Describe any material discrepancy between the location of the corner as restored or reestablished and the location of that corner as previously monumented by distance and direction. Show the discrepancy on the plan view and the distances between the corner as previously monumented. If the corner was reestablished through lost corner proportionate methods, show the method, including the directions and distances to other public land survey corners used for proportioning in determining the corner location.



**LEGEND**

- Stone Monument
- #3 x 24" Rebar Found
- #7 Rebar Found inside 1 1/4" pipe
- Recorded As
- Fence

Scale : 1" = 20'

(H) I, Bruce D. Bowden do certify that the corner location shown on this record was determined by me or under my direction and control and that this U.S. Public Land Survey Monument Record is correct and complete to the best of my knowledge and belief.

Signature January 28, 2017



Romportl No. 20102020000  
Grant Co. Index No. 23

# U. S. PUBLIC LAND SURVEY MONUMENT RECORD

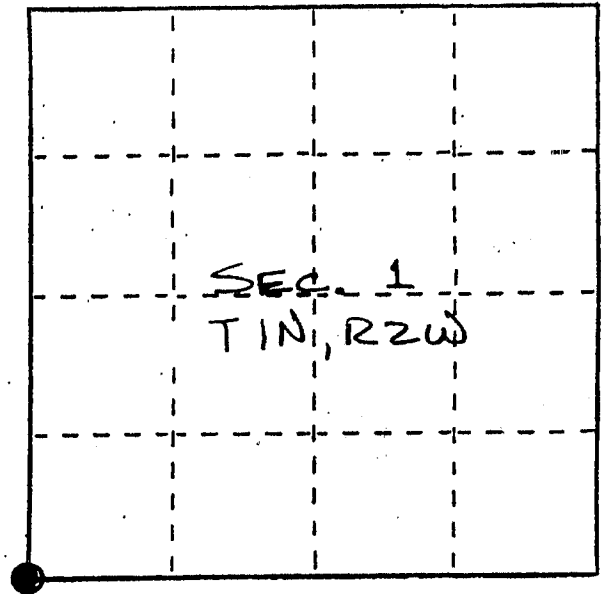
**INSTRUCTIONS :**

This record shall show the location of the corner and shall include all of the following nine elements (a through i).

- (a) Identify the corner by reference to the U.S. public land survey system.

● = Corner monument restored.

SOUTHWEST CORNER OF  
SEC. 1, T1N, R2W,  
JANESTOWN TWP., GRANT  
CO., WISC.



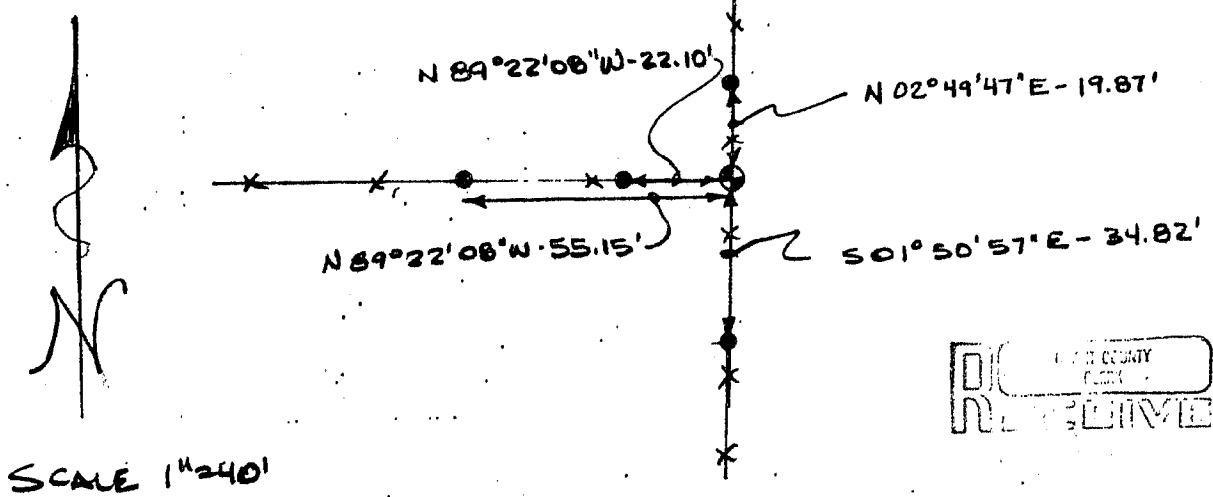
- (b) Describe any record evidence, monument evidence, occupational evidence, testimonial evidence or any other material evidence you considered, and whether the monument was found or placed.

MONUMENT WAS FOUND STONE AS RECORDED IN GRANT COUNTY SURVEYORS BOOK D ON PAGE 12 BY JOEL BARBER 111 1868.

- (c) In the plan view drawing below, provide reference ties to at least 4 witness monuments, or, if the location is within a municipality, to at least 2 witness monuments. (Witness monuments shall be made of concrete, natural stone, iron or other equally durable material.) Describe witness monuments.

- (d) Show a plan view drawing depicting the relevant monuments and reference ties which is sufficient in detail to enable accurate relocation of the corner monument if the corner monument is disturbed. Indicate north.

- = 7/8" X 24" REBAR SET INSIDE OF 1 1/4" PIPE FOUND ON EAST SIDE OF 6" X 6" X 10" STONE ON TOP OF 8" X 10" X 12" STONE
- = 3/8" X 24" SOLID ROUND BAR SET



FEB 16 1987

- (e) Describe any material discrepancy between the location of the corner as restored or reestablished and the location of that corner as previously restored or reestablished by distance and direction. Show the discrepancy on the plan view drawing under (d) above. Show the distances between the corner as previously restored or reestablished and (1) the corner as restored or reestablished, and (2) to at least 2 of the witness monuments shown on the drawing in (d), above.

None.

- (f) Was the corner restored through acceptance of (1) an obliterated evidence location, or, (2) a found perpetuated location?

(2) A FOUND PERPETUATED LOCATION

- (g&h) Was the corner reestablished through lost corner proportionate methods? If so, show the method, including the directions and distances to other public land survey corners used as evidence or used for proportioning in determining the corner location?

No.

- (i) I, BRUCE D. BOWDEN  
(type or print name) certify that the corner location shown on this record was determined by me or under my direction and control and that this U.S. Public Land Survey Monument Record is correct and complete to the best of my knowledge and belief.

Bruce D. Bowden  
Signature

JANUARY 5, 1987  
Date

