

GRANT COUNTY CERTIFIED LAND CORNER

CORNER NUMBER 20

CERTIFICATE:

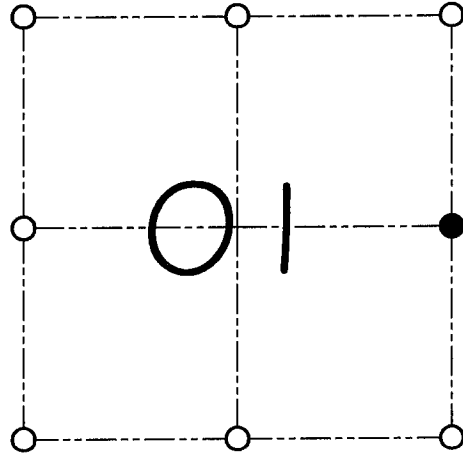
I, Larry L. Austin, do hereby certify that on the 20th day of September, 2000, I found evidence of the East 1/4 corner of Section 01, Town 1 North, Range West, of the 4th Principal Meridian, and I re-established said corner according to the Wisconsin statutes as shown and described hereon.

Dated this 22nd day of September, 2000

Larry L. Austin
Larry L. Austin S-1903



SEAL



● = CORNER LOCATION

EAST 1/4 CORNER OF
SECTION 01, T 1 N R 2 W
TOWN OF JAMESTOWN

HISTORY OF ORIGINAL CORNER ESTABLISHMENT:

Corner was originally set in 1832 by Lucius Lyon. In 1853 Overton found the original corner. In 1993 David Burbach set a Number 6 rebar.

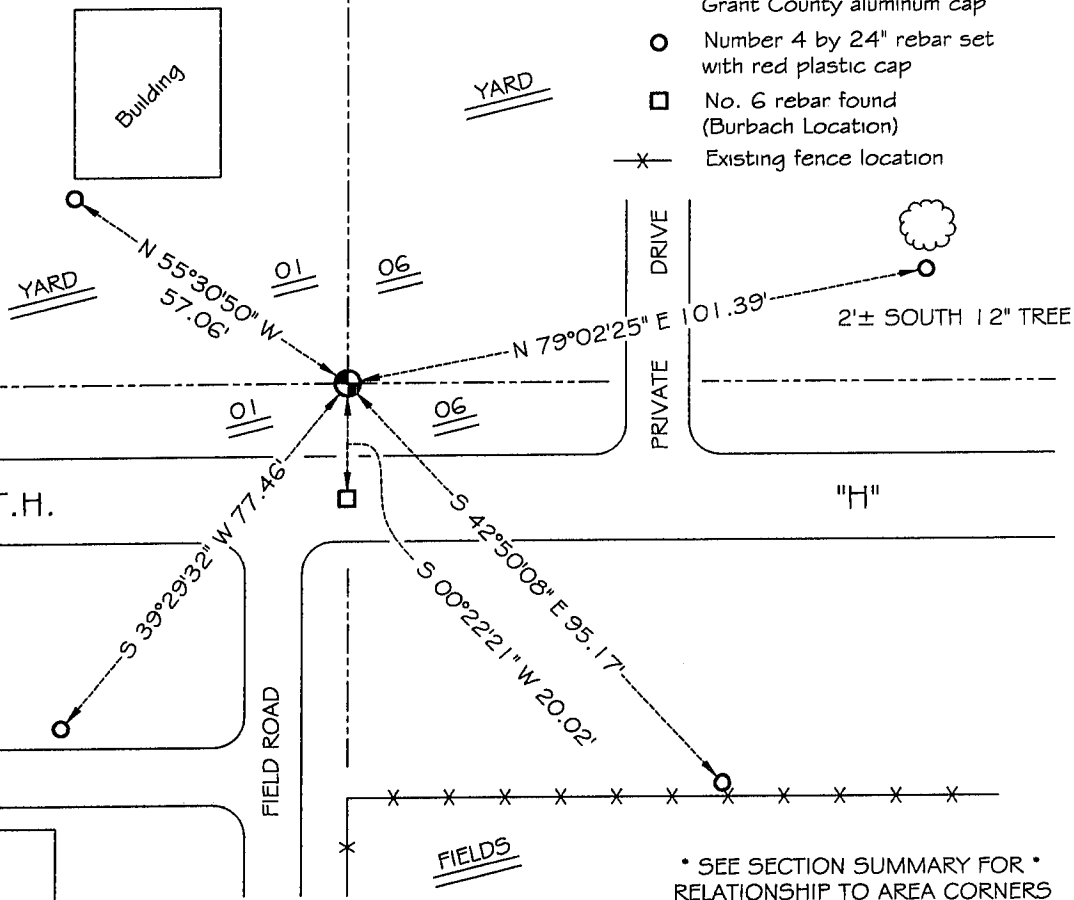
DESCRIPTION OF CORNER EVIDENCE FOUND:

I found the existing No. 6 rebar. I did not accept it's location after measuring to the existing corners North & South of the corner. I reset the corner proportionately on the East line of Section 01. Verified this location using E.D.M. & G.P.S. methods.

DESCRIPTION OF CORNER AND WITNESS MONUMENTS, references and accessories used to perpetuate the original or re-established location of this corner

WITNESS TO THE CORNER LOCATION: SHELBY BLINDERT & BOBBY SEDGWICK

SKETCH:



LEGEND

- Number 8 by 30" rebar set with Grant County aluminum cap
- Number 4 by 24" rebar set with red plastic cap
- No. 6 rebar found (Burbach Location)
- x— Existing fence location

* SEE SECTION SUMMARY FOR *
RELATIONSHIP TO AREA CORNERS