

GRANT COUNTY

Survey Monument Record

TYPE OF MONUMENT, Set 1" x 30" Aluminum Capped Grant County Monument

STATE PLANE COORDINATES: N _____
E _____

ELEVATION — M.S.L. DATUM: _____

THETA ANGLE: _____

FIELD BOOK: _____

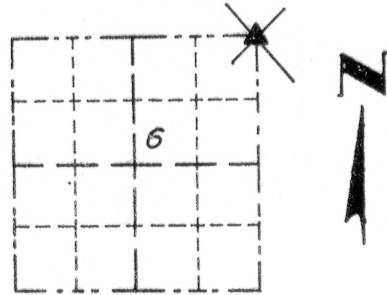
PAGE _____

CORNER NO. 11

NE SECTION 6

TOWN 1 NORTH

RANGE 2 WEST



LOCATION
(Indicated by "X")

BASIS FOR MONUMENT LOCATION

(Use reverse side if necessary)

Show info such as: History of corner, with reference to Vol. and pg., dates, surveyor; exact description of monument replaced; if location computed, by taped or EDM traverse; landowner, remarks, etc.

SEAL:

CORNER LOCATED WAS DETERMINED BY USING LARRY AUSTIN NORTH 1/4 CORNER LOCATION, WITH EXISTING MONUMENT RECORDED AS SUPPOSEDLY AT THE SOUTHEAST CORNER OF SECTION 31-2-2W, RECORDED BY STANLEY J. KING, S-2001. FOUND NO EVIDENCE OF THE CORNER OR ITS WITNESS. SET 1" x 30" GRANT COUNTY ALUMINUM MONUMENT WITH COUNTY CAP. CORNER LOCATION WILL FITS EXISTING FENCES TO THE SOUTH AND WEST WITH DEED EXCEPTION OF 33' AS RECORDED AS DOCUMENT NO. 694709, IN VOLUME 1123, PAGES 344 AND 345, IN THE OFFICE OF THE GRANT COUNTY REGISTER OF DEEDS. VERIFIED THIS LOCATION USING EDM AND GPS MEASUREMENTS.



CERTIFIED CORRECT

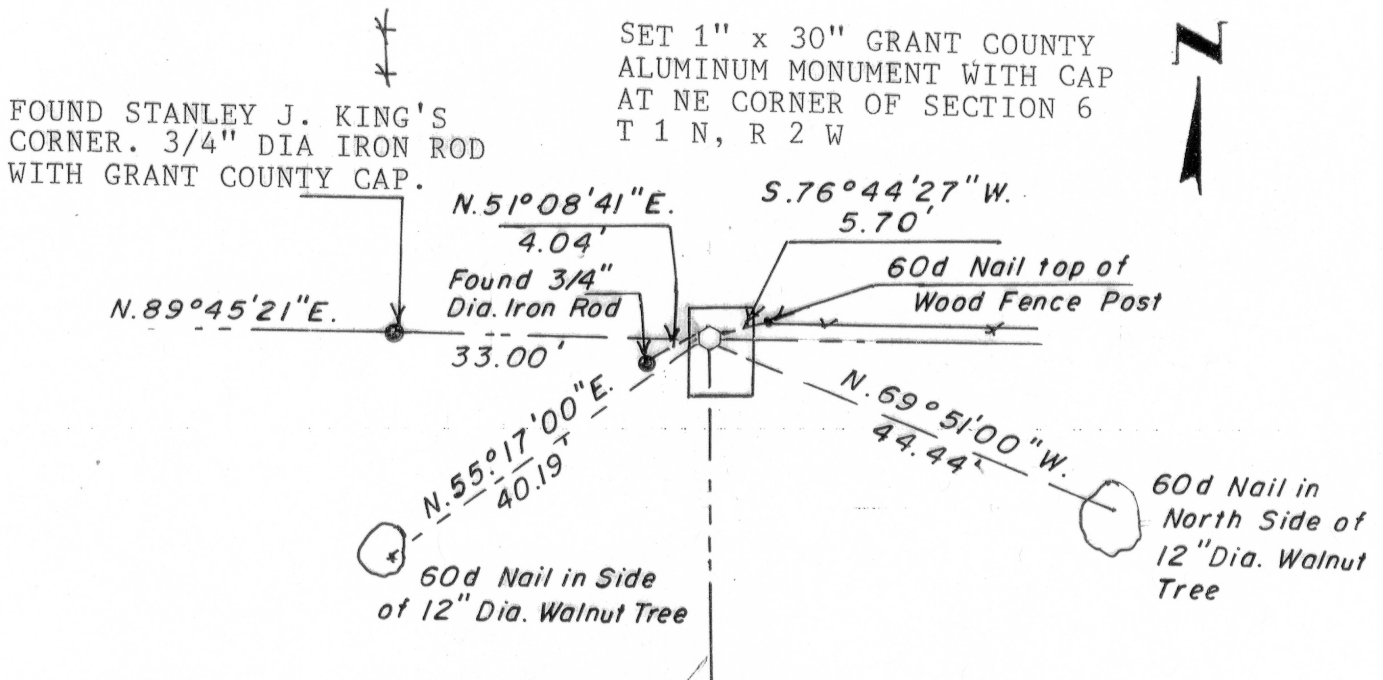
Paul C. Brashaw

Registered Land Surveyor No. S-1509

DATE: April 17, 2010

TIE SKETCH

Show at least three (3) ties and monument



Paul C. Brashaw

4413 W. Stagecoach Tr. Galena Illinois 61036
Telephone (815) 777-1172

APR 20 2010