

KEN

GRANT COUNTY CERTIFIED LAND CORNER

CORNER NUMBER 03

CERTIFICATE:

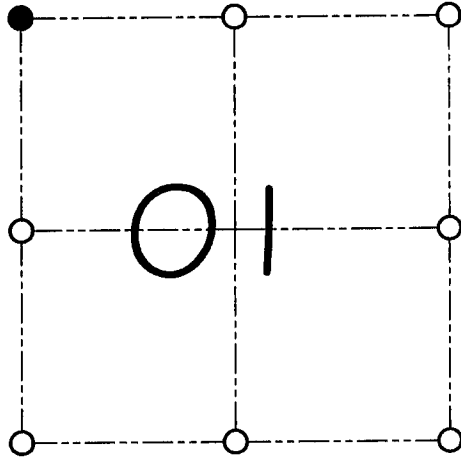
I, Larry L. Austin, do hereby certify that on the 20th day of September, 2000, I found evidence of the Northwest corner of Section 01, Town 1 North, Range 2 West, of the 4th Principal Meridian, and I re-established said corner according to the Wisconsin statutes as shown and described hereon.

Dated this 22nd day of September, 2000

Larry L. Austin
Larry L. Austin S-1903



SEAL



● = CORNER LOCATION

NORTHWEST CORNER OF
SECTION 01, T 1 N R 2 W
TOWN OF JAMESTOWN

HISTORY OF ORIGINAL CORNER ESTABLISHMENT:

Corner was originally set in 1832 by Lucius Lyon. In 1853 Overton found an ancient corner. In 1876 Joel Barber set a large rock at this location. In 1986 Bruce Bowden located the rock placed by Barber.

DESCRIPTION OF CORNER EVIDENCE FOUND:

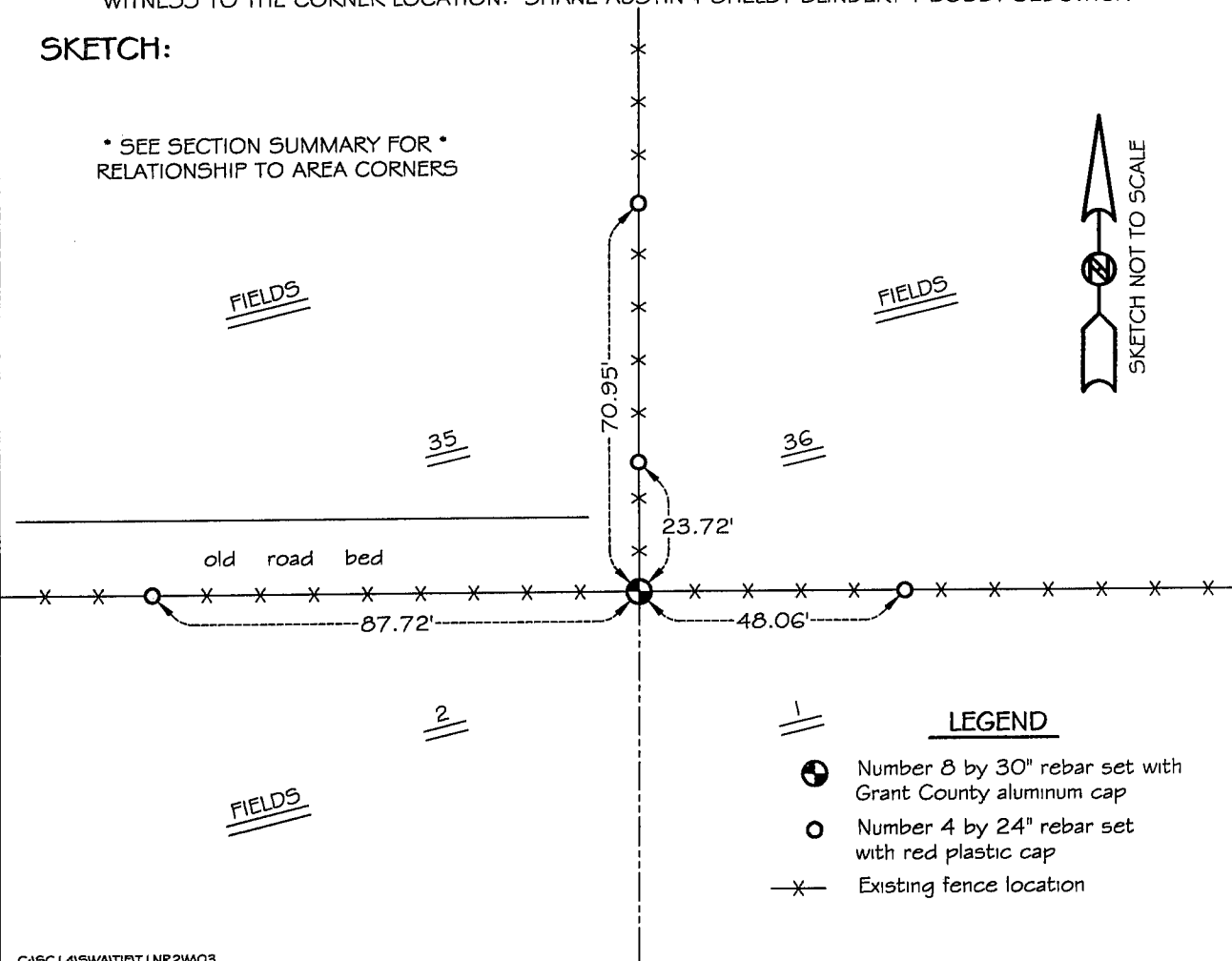
I found the rock and replaced it with a Number 8 rebar with aluminum cap *due* to erosion. I verified this location using EDM & GPS methods.

DESCRIPTION OF CORNER AND WITNESS MONUMENTS, references and accessories used to perpetuate the original or re-established location of this corner

WITNESS TO THE CORNER LOCATION: SHANE AUSTIN & SHELBY BLINDERT & BOBBY SEDGWICK

SKETCH:

* SEE SECTION SUMMARY FOR *
RELATIONSHIP TO AREA CORNERS



LEGEND

- Number 8 by 30" rebar set with Grant County aluminum cap
- Number 4 by 24" rebar set with red plastic cap
- x— Existing fence location