

GRANT COUNTY CERTIFIED LAND CORNER

CORNER NUMBER 02

CERTIFICATE:

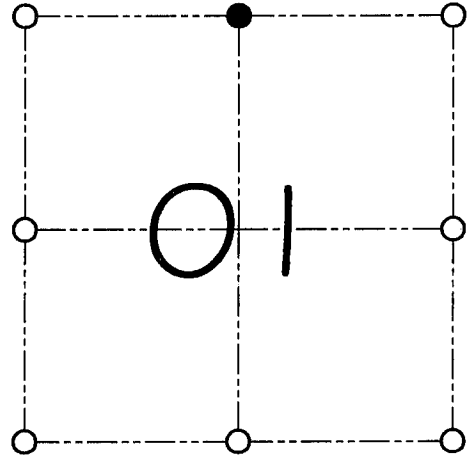
I, Larry L. Austin, do hereby certify that on the 20th day of September, 2000, I found no evidence of the North 1/4 corner of Section 1, Town 1 North, Range 2 West, of the 4th Principal Meridian, and I re-established said corner according to the Wisconsin statutes as shown and described hereon.

Dated this 22nd day of September, 2000

Larry L. Austin
Larry L. Austin S-1903



SEAL



● = CORNER LOCATION

NORTH 1/4 CORNER OF
SECTION 1, T 1 N R 2 W
TOWN OF JAMESTOWN

HISTORY OF ORIGINAL CORNER ESTABLISHMENT:

Corner was originally set in 1832 by Lucius Lyon.
Sam Wilts tied to the corner in 1844. In 1853 Overton found an ancient corner.

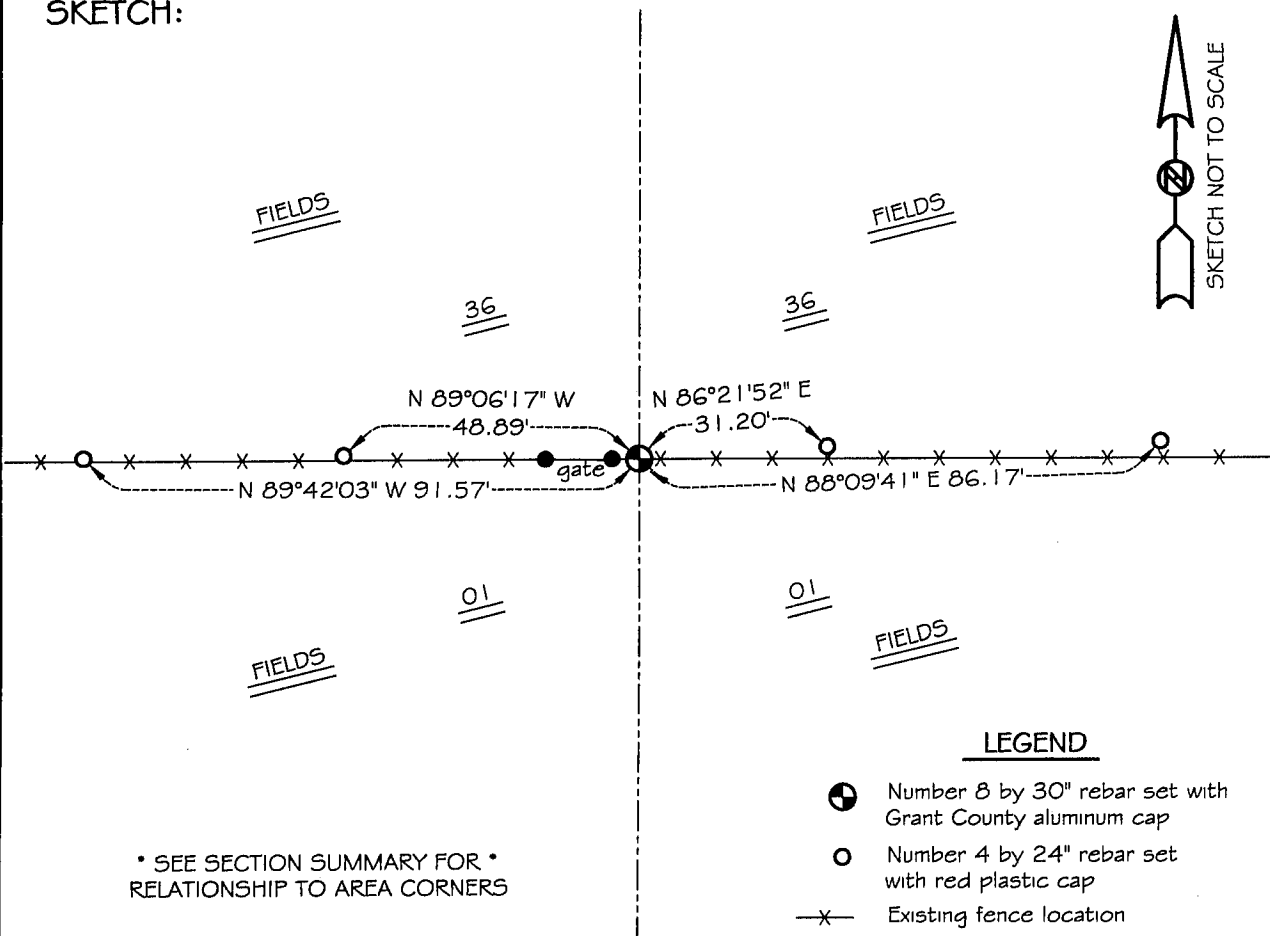
DESCRIPTION OF CORNER EVIDENCE FOUND:

I found no evidence to the previous locations. I reset the corner proportionately between the Northwest and Northeast corner. Verified this location using E.D.M. & G.P.S. methods.

DESCRIPTION OF CORNER AND WITNESS MONUMENTS, references and accessories used to perpetuate the original or re-established location of this corner

WITNESS TO THE CORNER LOCATION: SHELBY BLINDERT & BOBBY SEDGWICK

SKETCH:



LEGEND

- Number 8 by 30" rebar set with Grant County aluminum cap
- Number 4 by 24" rebar set with red plastic cap
- x- Existing fence location