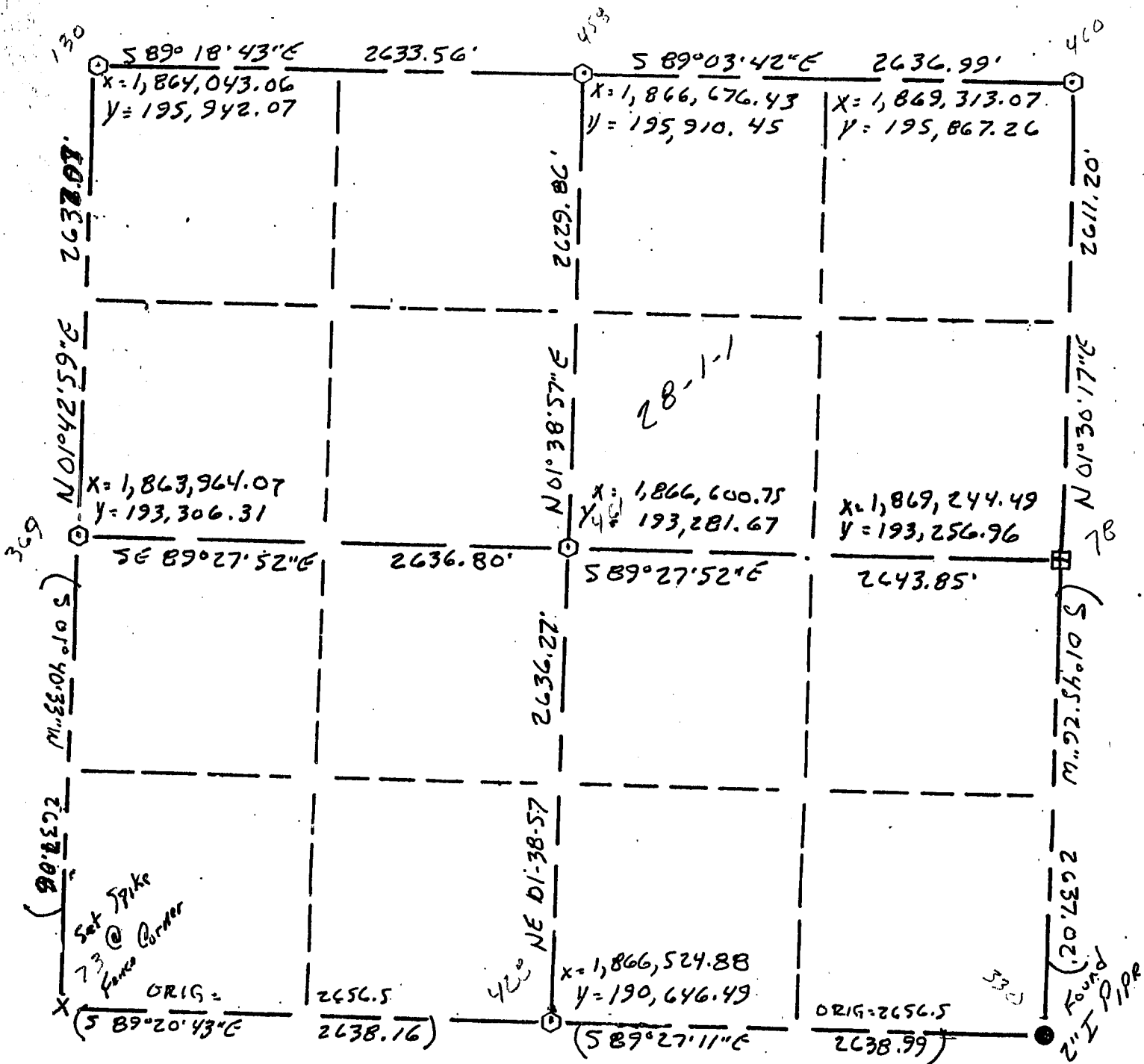


GRANT COUNTY

Section Summary

28 - 1 N - 1 W
SECTION TOWN RANGE



Grid coordinates computed from information supplied by DOT survey along Hwy. 11 in 1990; the ground distances shown would be multiplied by a combination factor of .999955;

LEGEND

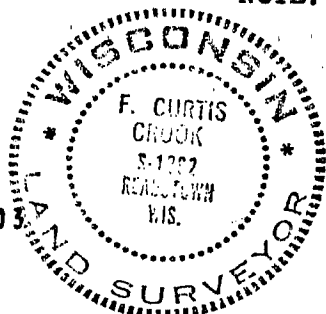
- ▲ COUNTY MONUMENT
- STONE OR CONCRETE MONUMENT
- ⊙ OTHER (specify) 2" X 30"
Aluminum Monument W/ DOT Cap. Set
- ⊞ Cross Chiselled in Concrete Base
for Grader Blade Fence Corner

NOTE:

Relationships of all section corners to other section corners shall be shown hereon by bearing and distance or grid coordinates

Show or describe bearing reference (see above)

NOTE: Courses shown in parenthesis are from a single (open) traverse and are shown for reference purposes only.



Surveyed Jan. - March 1991

F. Curtis Crook 3-11-91
F. Curtis Crook RLS #1292