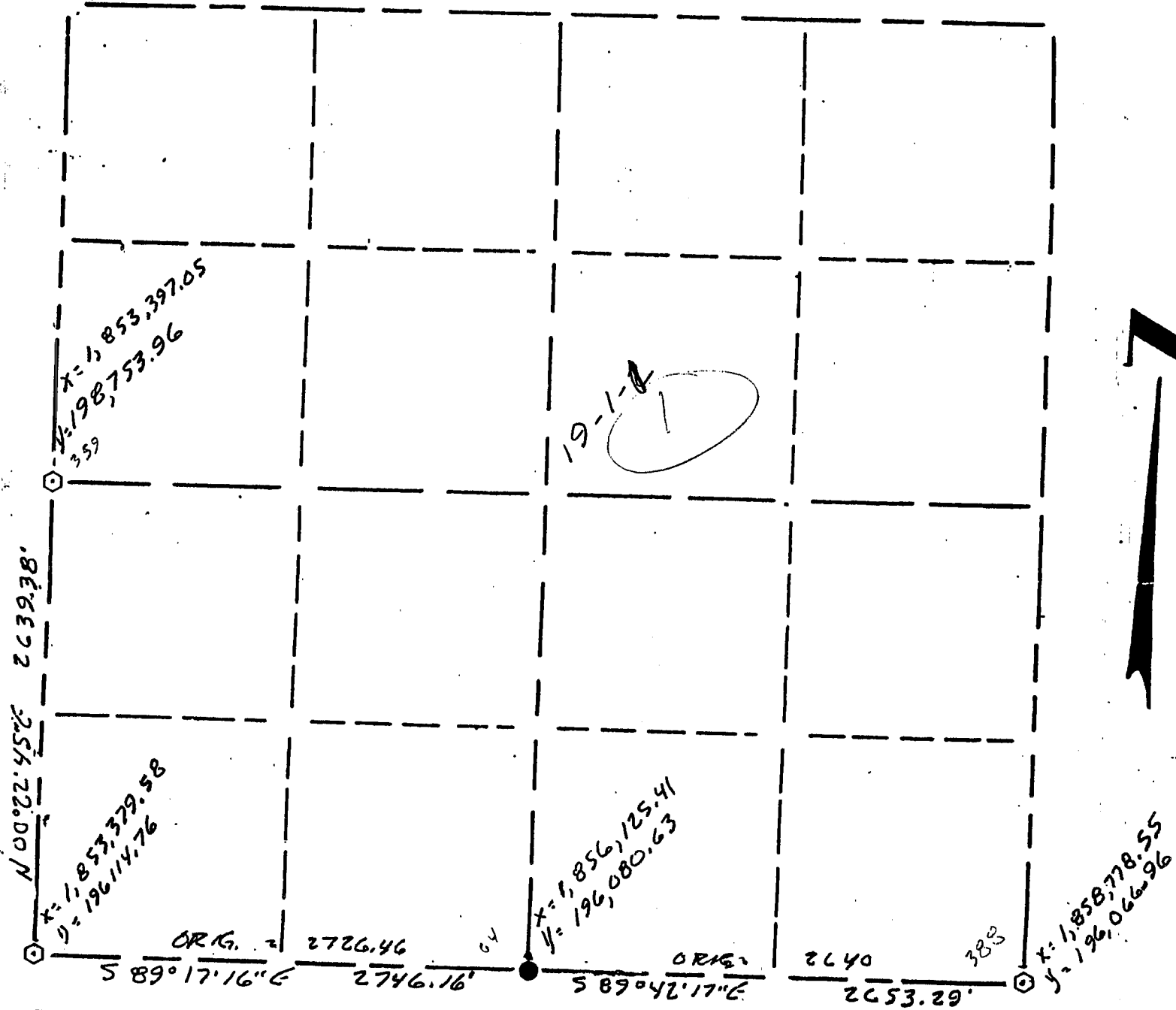


GRANT COUNTY

Section Summary

19 - 1 N - 1 W
 SECTION TOWN RANGE



Grid coordinates computed from information supplied by DOT survey along Hwy. 11 in 1990; the ground distances shown would be multiplied by a combination factor of .999955;

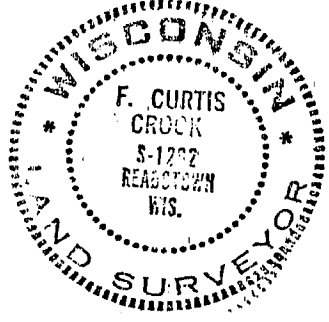
LEGEND

- ▲ COUNTY MONUMENT
- STONE OR CONCRETE MONUMENT
- ⊙ OTHER (specify) 2" X 30"
Aluminum Monument W/ DOT Cap Set
- 3/4" Iron Bar Found

NOTE:

Relationships of all section corners to other section corners shall be shown hereon by bearing and distance or grid coordinates

Show or describe bearing reference (see above)



Surveyed Jan. - Feb. 1991

F. Curtis Crook 3-9-96

F. Curtis Crook RLS #1292