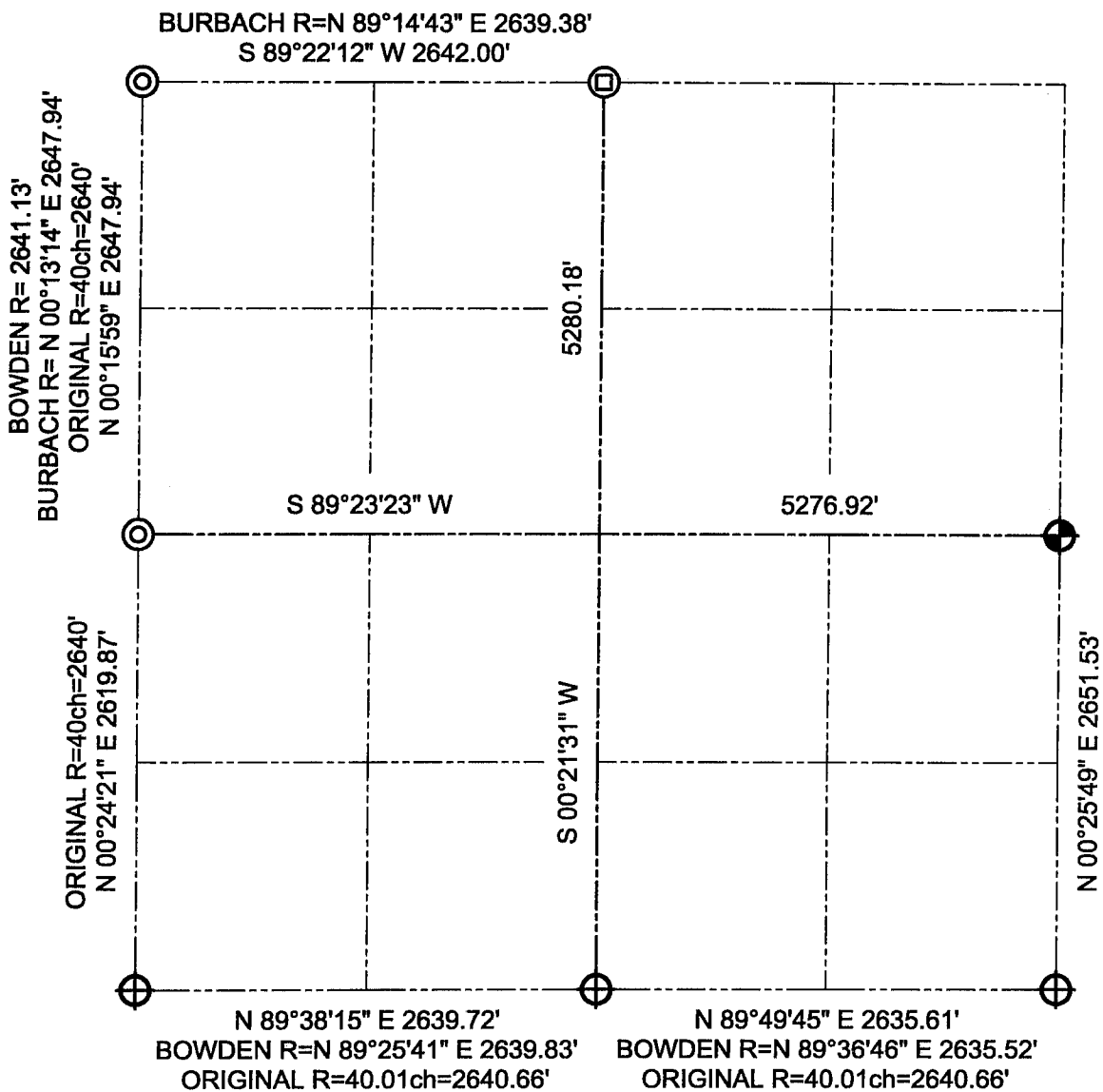






GRANT COUNTY

SECTION SUMMARY

15
-
1N
-
1W
SECTION TOWN RANGE



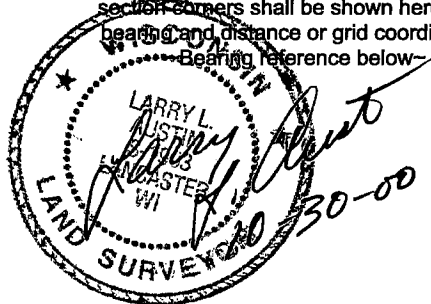
LEGEND

-  Number 8 x 30" rebar set with Grant County Aluminum Cap
-  Aluminum monument found
-  2" Iron pipe found
-  Number 6 rebar found

NOTE:

Relationships of all section corners to other section corners shall be shown hereon by bearing and distance or grid coordinates.

Bearing reference below



Bearings referenced to the West line of the Northwest Quarter of Section 15, which is assumed to bear N 00°15'59" E .