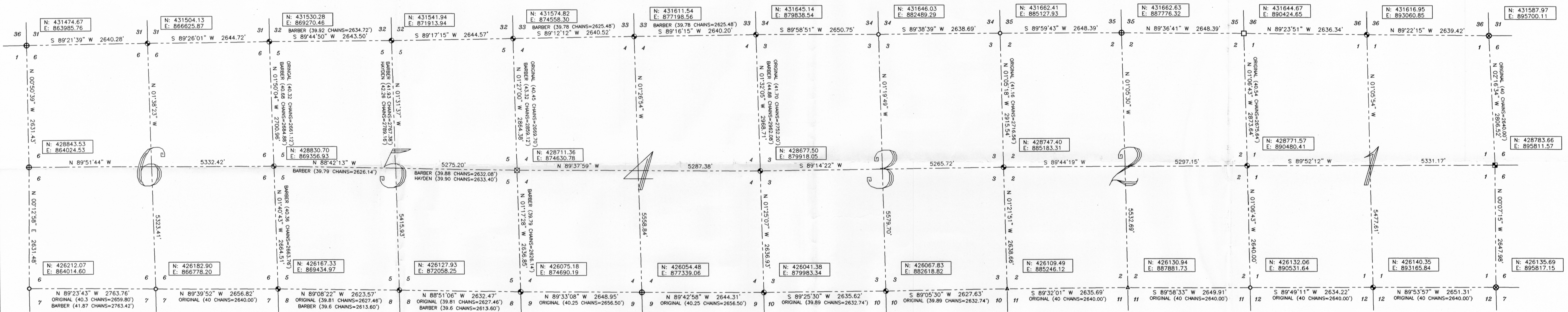


# WISCONSIN LAND INFORMATION PROGRAM 1998 GRANT PROJECT

## SECTION CORNER PROJECT CONTRACT #89154

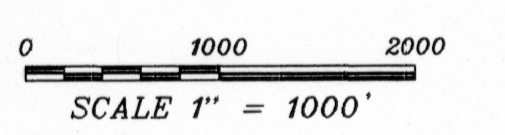
SECTIONS 1-6, T1N R1W, HAZEL GREEN TOWNSHIP, GRANT COUNTY WISCONSIN



### LEGEND

- ⊙ No. 8 x 30" rebar set with Grant County Aluminum Cap - wt=2.87#/A.F.
- ⊕ No. 8 rebar found with Grant County Aluminum Cap
- ⊗ No. 7 rebar found with Lafayette County Aluminum Cap
- No. 6 rebar found
- No. 10 rebar found
- ⊠ Aluminum Monument found with Grant County Aluminum Cap
- ⊞ Stone monument found
- ( ) Recorded as
- ▲ Railroad spike found

Bearings referenced to the Wisconsin Coordinate System of 1983 (1991), South Zone, Grant County Coordinate System.



**SURVEYOR'S CERTIFICATE:**  
I, Larry L. Austin, Registered Wisconsin Land Surveyor, hereby certify:  
That this plat was surveyed, mapped and monumented as shown hereon by me or under my direct supervision and in accordance with the instructions of Grant County Land Information Committee and to the best of my knowledge and belief, this plat is an accurate representation thereof. All plans that do not show a seal imprint in red ink may contain unauthorized alterations. The certification contained on this document shall not apply to any copies.

Dated this 24th day of November, 2002.  
Revised this 2nd day of January, 2004 *LA*

*Larry L. Austin*  
Larry L. Austin, S-1963  
Grant County Surveyor

**WISCONSIN LAND INFORMATION PROGRAM**  
**1998 GRANT PROJECT**  
**SECTION CORNER PROJECT CONTRACT #89154**  
**SECTIONS 1-6, T1N R1W, HAZEL GREEN TOWNSHIP,**  
**GRANT COUNTY WISCONSIN**

**GRANT COUNTY SURVEYOR**  
**LARRY L. AUSTIN**  
4211 HWY 81 E, LANCASTER, WI 53813  
PHONE 608-723-6363 FAX 608-723-6702

FIELDBOOK: SDR33, 9615, 2200  
G:\TINR1W\T1N1R1W  
C:\AJM\T1N1R1W\1-6-HW-HZLGRN

DRAWN BY: AJ AUSTIN  
APPROVED: LL AUSTIN  
CREW: BS - 1 - 80  
SHEET 1 OF 1