

# U.S. PUBLIC LAND SURVEY MONUMENT RECORD

(As Required By s. A-E 7.08, WI Adm. Code)

History of original corner establishment and subsequent restorations and description of any record, monument, occupational, testimonial or other evidence considered:

- 12/10/1831 LUCIUS LYON "SET POST AND RAISED A VERY LARGE MOUND AT THE INTERSECTION OF THE 4TH PRINCIPLE MERIDIAN WITH THE BASE LINE, WHICH IS THE NORTHERN BOUNDARY OF THE STATE OF ILLINOIS, FROM WHICH POST (IN MOUND) A WHITE OAK 20" DIAMETER BEARS N31½°E 656 LINKS AND IS BLAZED AND MARKED".
- 9/23/1966 to 5/10/1969 WM. T. WAMBACH, JR., RLS# 371, SET A MONUMENT WHERE HE DETERMINED LYONS POST AND MOUND HAD STOOD.
- 12/02/1988 DENNIS J. SNYDER, RLS# 1832, USED THIS CORNER ON GRANT COUNTY CSM #282
- 12/18/1992 FRED R. BOWDEN II, RLS# 2074, RECORDED A USPLS MON. RECORD IN GRANT CO.
- 11/10/1994 LAWRENCE E. SCHMITT, RLS# 1312, USED THIS CORNER ON A PLAT OF SURVEY IN THE SE¼ OF SECTION 36, T.1N., R.1W.
- 05/22/1996 BRUCE D. BOWDEN, RLS# 1250, USED THIS CORNER ON A PILOT PROJECT FOR GRANT COUNTY AND DETERMINED THE LAT. AS 42°30'25.8765", LONG. AS 90°25'36.1482".

Corner was: (Check All That Apply)

- Restored through acceptance of an obliterated evidence location
- Restored through acceptance of a found perpetuated location
- Considered a lost corner and reestablished through lost corner proportionate methods (include a plan view drawing showing distances and directions to other Public Land Survey Corners used for proportioning and determining the corner location)
- Restored or reestablished in a location that differs from a previous restoration or reestablishment (include a plan view drawing and indicate what was set and/or found)

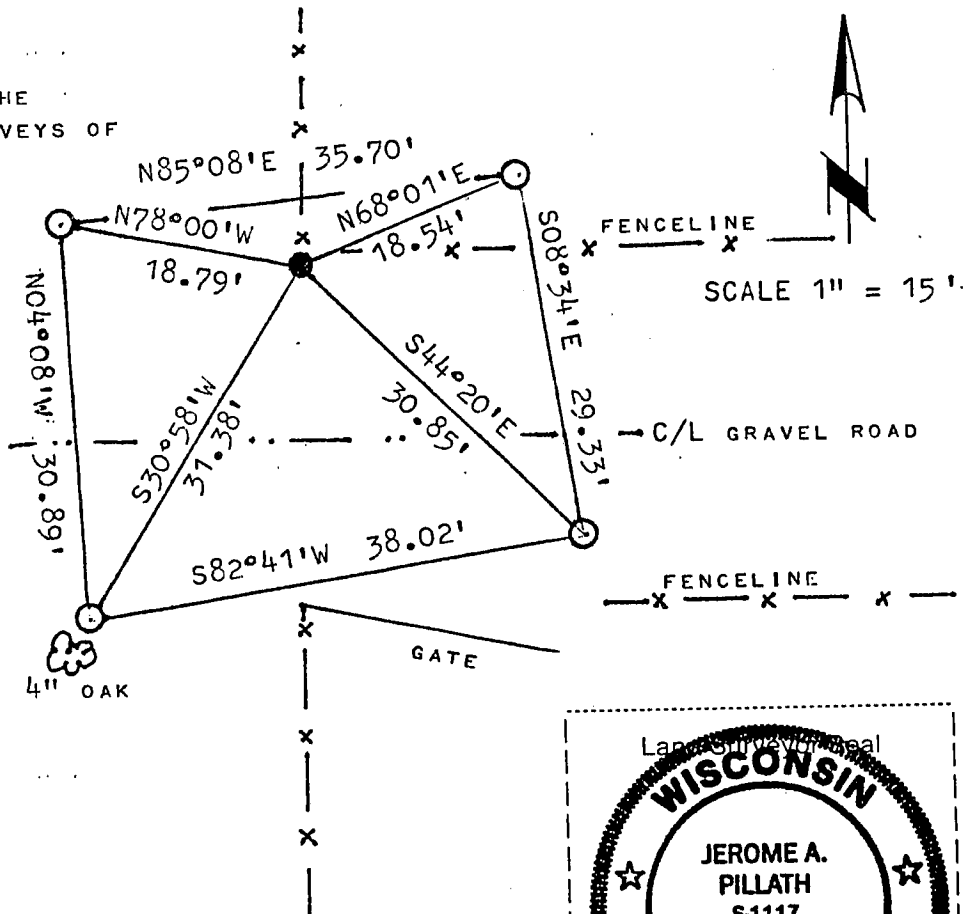
Describe the monument and accessories used to perpetuate the location of this corner. (include a plan view drawing and indicate what was set and/or found)

08/14/1998 I FOUND WAMBACH'S 0.34' SQUARE CONCRETE MONUMENT WITH A 0.25' DIAMETER ROUND BRASS CAP 0.5' SOUTH OF THE FENCE CORNER POST AND 13.5' NORTH OF THE ROAD CENTERLINE. WITNESS TIES ARE MADE TO 1" X 30" SOLID IRON RODS MAGNETIC WEIGHING 2.67 LBS/FT.

THIS CORNER IS ALSO KNOWN AS THE POINT OF BEGINNING OF THE SURVEYS OF THE STATE OF WISCONSIN

The SOUTHWEST corner of Section 31, T. 1 N., R. 1 E., ~~Marquette~~ Lafayette County, Wisconsin LAFAYETTE Co.,

3.16	3.11
GRANT COUNTY	LAFAYETTE COUNTY
JO DAVIESS COUNTY	
1.13	1.17

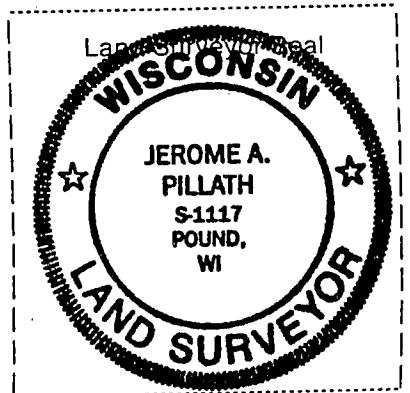


● = Location of Corner      ○ = SET 1" X 30" ROD

JEROME A. PILLATH

I, Jerome A. Pillath (type or print name) certify that the corner location shown on this record was determined by me or under my direction and control and that this U.S. Public Land Survey Monument Record is correct and complete to the best of my knowledge and belief.

Jerome Pillath      12/29/1998  
Signature      Date



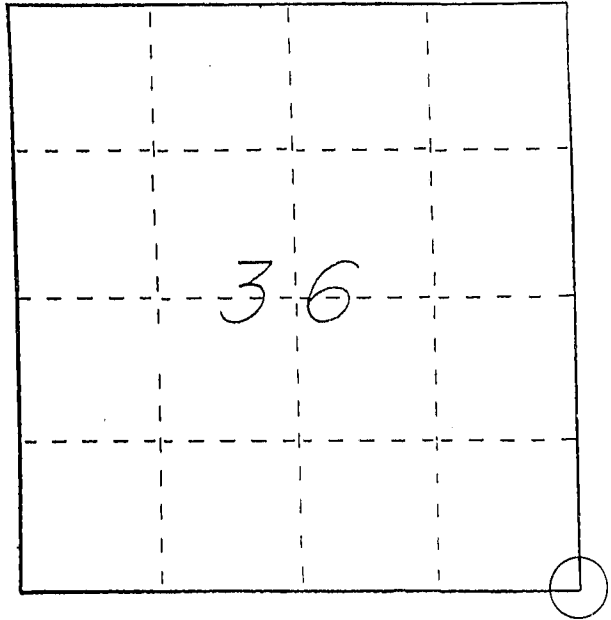
Index No. \_\_\_\_\_

# U. S. PUBLIC LAND SURVEY MONUMENT RECORD

INSTRUCTIONS: This record shall show the location of the corner and shall include all of the following nine elements (a through i).

- (a) Identify the corner by reference to the U.S. public land survey system.
- = Corner monument restored.

SOUTHEAST CORNER  
 SECTION 36  
 TOWN 1 NORTH  
 RANGE 1 WEST  
 HAZEL GREEN TOWNSHIP  
 GRANT COUNTY, WISCONSIN



- (b) Describe any record evidence, monument evidence, occupational evidence, testimonial evidence or any other material evidence you considered, and whether the monument was found or placed.

FOUND AND ACCEPTED A BRASS CAP SET IN CONCRETE @ WISCONSIN POINT OF BEGINNING AFTER VERIFICATION BY AN EDM TRAVERSE OF THE AREA

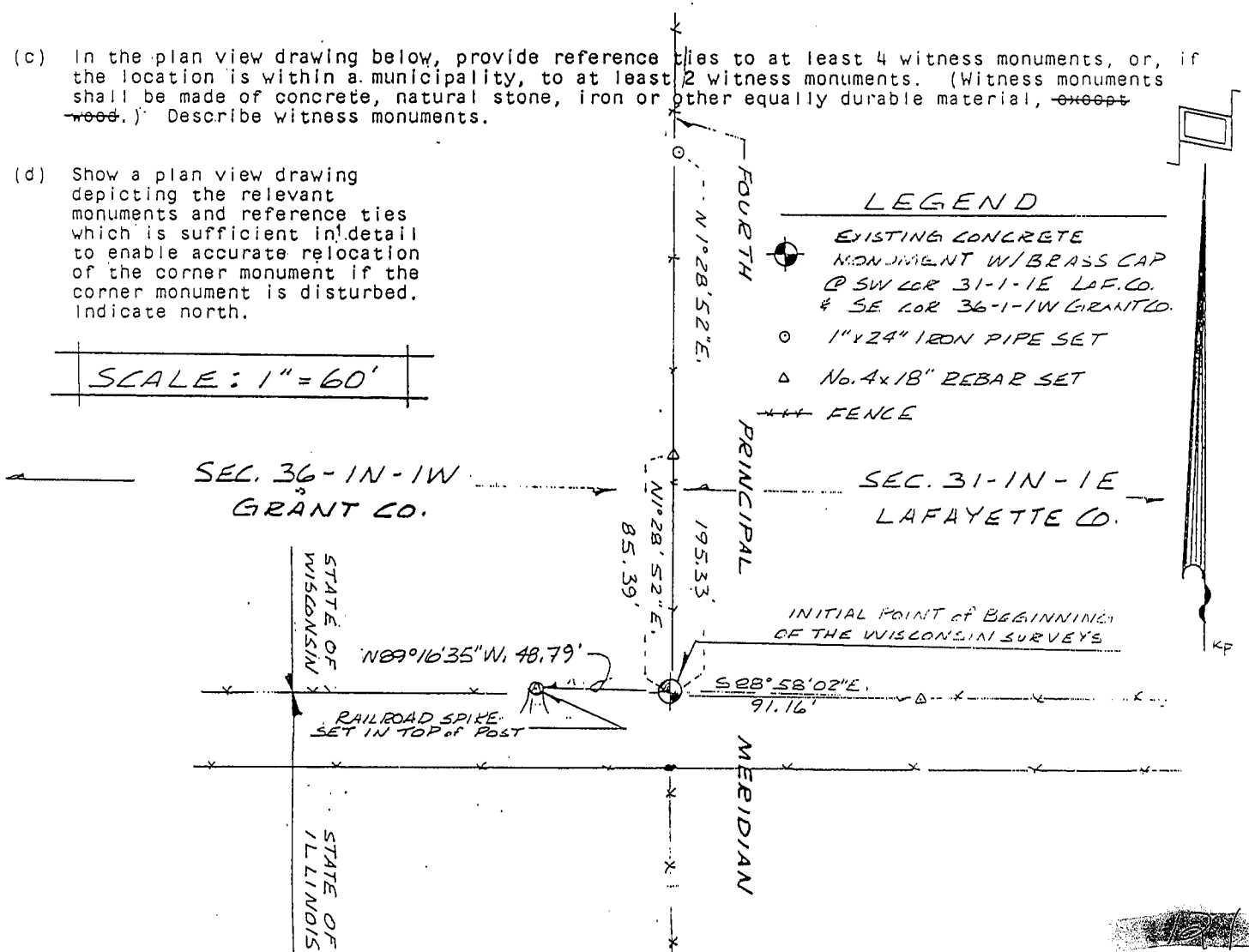
- (c) In the plan view drawing below, provide reference ties to at least 4 witness monuments, or, if the location is within a municipality, to at least 2 witness monuments. (Witness monuments shall be made of concrete, natural stone, iron or other equally durable material, ~~except wood.~~) Describe witness monuments.

- (d) Show a plan view drawing depicting the relevant monuments and reference ties which is sufficient in detail to enable accurate relocation of the corner monument if the corner monument is disturbed. Indicate north.

SCALE: 1" = 60'

### LEGEND

- EXISTING CONCRETE MONUMENT W/ BRASS CAP @ SW COR 31-1-1E LAF. CO. & SE COR 36-1-1W GRANT CO.
- 1" x 24" IRON PIPE SET
- △ No. 4 x 18" REBAR SET
- FENCE



(e) Describe any material discrepancy between the location of the corner as restored or reestablished and the location of that corner as previously restored or reestablished by distance and direction. Show the discrepancy on the plan view drawing under (d), above. Show the distances between the corner as previously restored or reestablished and (1) the corner as restored or reestablished, and (2) to at least 2 of the witness monuments shown on the drawing in (d), above.

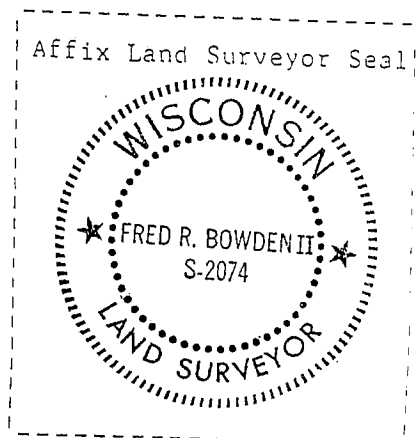
NONE

(f) Was the corner restored through acceptance of (1) an obliterated evidence location, or, (2) a found perpetuated location?

(2) A FOUND PERPETUATED LOCATION

(g&h) Was the corner reestablished through lost corner proportionate methods? If so, show the method, including the directions and distances to other public land survey corners used as evidence or used for proportioning in determining the corner location?

No.



I, FRED R. BOWDEN II  
(type or print name) certify that the corner location shown on this record was determined by me or under my direction and control and that this U.S. Public Land Survey Monument Record is correct and complete to the best of my knowledge and belief.

Signature

Date

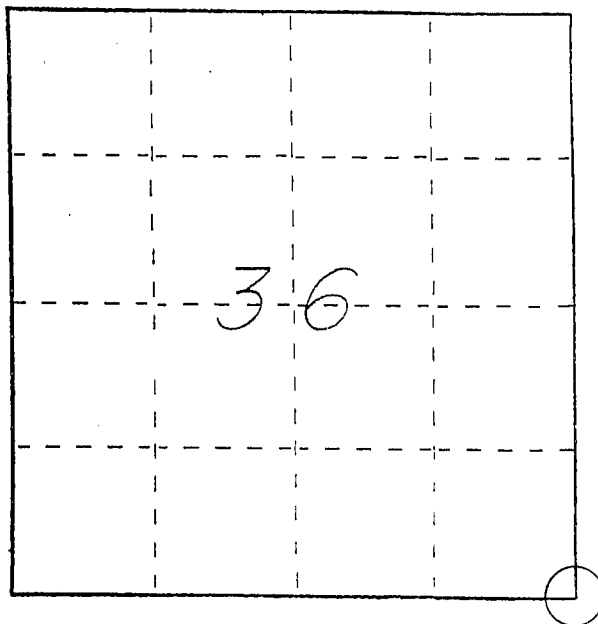
Fred R. Bowden II  
February 18, 1992

# U. S. PUBLIC LAND SURVEY MONUMENT RECORD

**INSTRUCTIONS:** This record shall show the location of the corner and shall include all of the following nine elements (a through i).

- (a) Identify the corner by reference to the U.S. public land survey system.
- = Corner monument restored.

SOUTHEAST CORNER  
 SECTION 36  
 TOWN 1 NORTH  
 RANGE 1 WEST  
 HAZEL GREEN TOWNSHIP  
 GRANT COUNTY, WISCONSIN



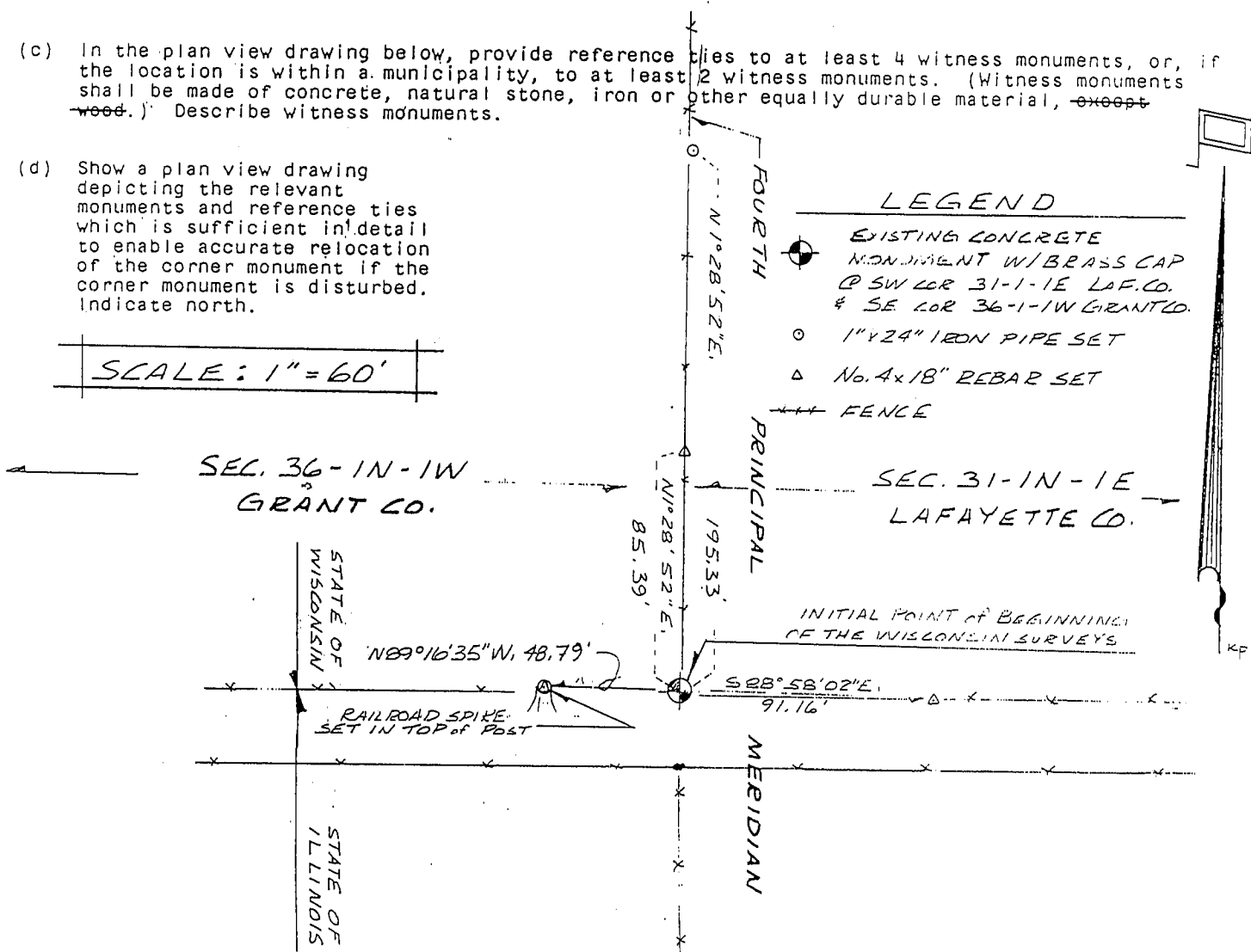
- (b) Describe any record evidence, monument evidence, occupational evidence, testimonial evidence or any other material evidence you considered, and whether the monument was found or placed.

FOUND AND ACCEPTED A BRASS CAP SET IN CONCRETE @ WISCONSIN POINT OF BEGINNING AFTER VERIFICATION BY AN EDM TRAVERSE OF THE AREA

- (c) In the plan view drawing below, provide reference ties to at least 4 witness monuments, or, if the location is within a municipality, to at least 2 witness monuments. (Witness monuments shall be made of concrete, natural stone, iron or other equally durable material, ~~except wood.~~) Describe witness monuments.

- (d) Show a plan view drawing depicting the relevant ties which is sufficient in detail to enable accurate relocation of the corner monument if the corner monument is disturbed. Indicate north.

SCALE: 1" = 60'



MAY 19 1993

(e) Describe any material discrepancy between the location of the corner as restored or reestablished and the location of that corner as previously restored or reestablished by distance and direction. Show the discrepancy on the plan view drawing under (d), above. Show the distances between the corner as previously restored or reestablished and (1) the corner as restored or reestablished, and (2) to at least 2 of the witness monuments shown on the drawing in (d), above.

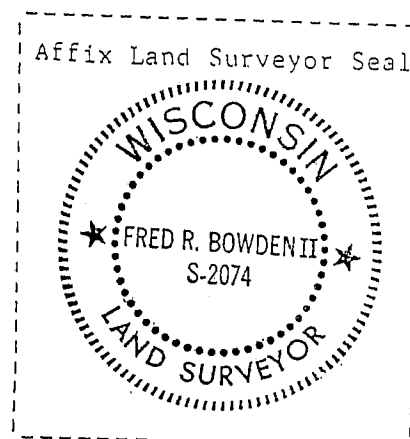
NONE

(f) Was the corner restored through acceptance of (1) an obliterated evidence location, or, (2) a found perpetuated location?

(2) A FOUND PERPETUATED LOCATION

(g&h) Was the corner reestablished through lost corner proportionate methods? If so, show the method, including the directions and distances to other public land survey corners used as evidence or used for proportioning in determining the corner location?

No.



I, FRED R. BOWDEN II

(type or print name) certify that the corner location shown on this record was determined by me or under my direction and control and that this U.S. Public Land Survey Monument Record is correct and complete to the best of my knowledge and belief.

Fred R. Bowden II  
Signature

February 18, 1992  
Date

RECORD OF U.S. PUBLIC LAND SURVEY CONTROL STATION

QUARTER SECTION CORNER  $\frac{3631}{13117}$  TOWNSHIP 29 N., RANGE 1 E., 1 W. LAFAYETTE & GRANT COUNTY, WISCONSIN  
TO DAVIESS COUNTY, ILLINOIS  
 GEODETIC SURVEY BY: ALSTER & ASSOCIATES, INC., MADISON, WIS.

STATE PLANE COORDINATES OF: TOWNSHIP CORNER  
 NORTH 185,149.32  
 EAST 1,884,963.23

ELEVATION OF STATION: 917 FT. THETA ANGLE: -0°17'35"

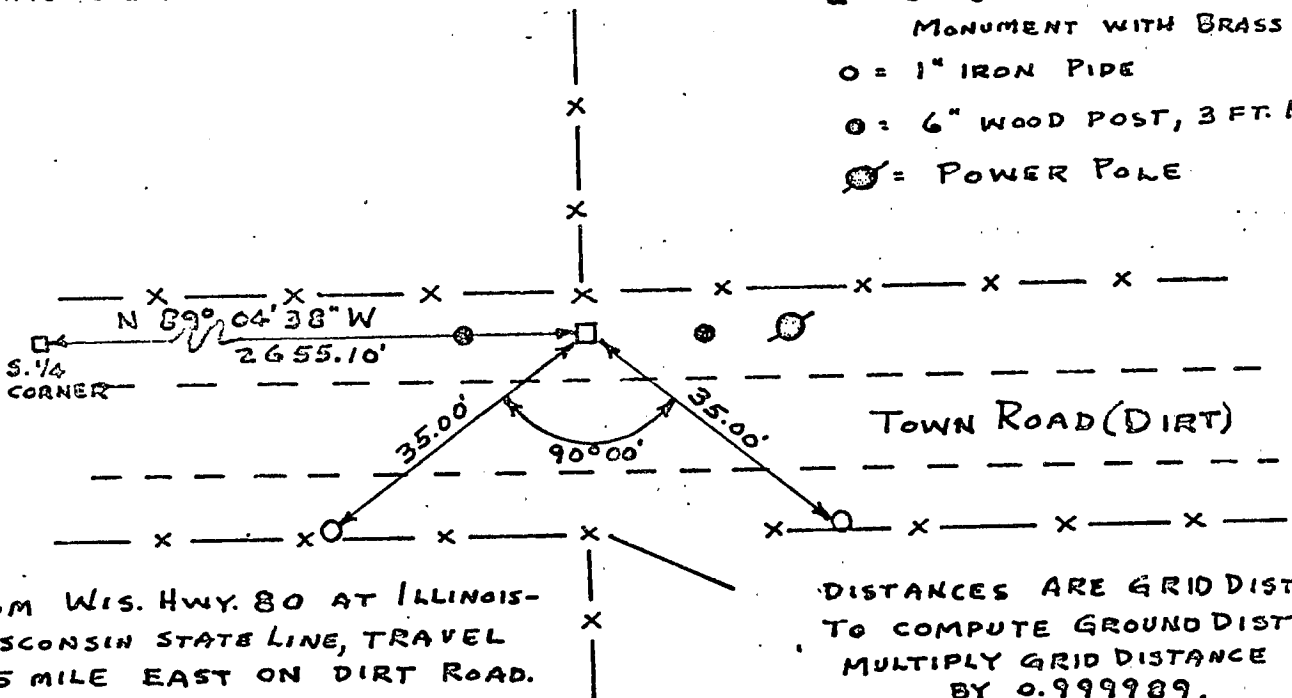
HORIZONTAL DATUM: WISCONSIN STATE PLANE COORDINATE SYSTEM, SOUTH ZONE

VERTICAL DATUM: MEAN SEA LEVEL, 1929 ADJUSTMENT

HORIZONTAL & VERTICAL CONTROL ACCURACY: SECOND ORDER

LOCATION SKETCH:

N 0°17'35" W GRID



FROM WIS. HWY. 80 AT ILLINOIS-WISCONSIN STATE LINE, TRAVEL 0.5 MILE EAST ON DIRT ROAD.

DISTANCES ARE GRID DISTANCES. TO COMPUTE GROUND DISTANCE, MULTIPLY GRID DISTANCE BY 0.999989.

SURVEYOR'S AFFIDAVIT:

STATE OF WISCONSIN)  
DANE COUNTY) SS

I HEREBY CERTIFY THAT NO EVIDENCE OF SURVEYS SINCE 1832 WAS FOUND. LUCIUS LYON'S POST & MOUND WERE OBLITERATED. MEASUREMENTS TO FENCE LINES & STREAMS FIT LYON'S NOTES  $\pm 0.3\%$ . EXCAVATION DISCLOSED EVIDENCE OF THE PITS LYON DUG THE EARTH FROM FOR HIS MOUND 2 FT. NORTH & 7 FT. SOUTH OF THE CORNER FENCE POST NORTH OF THE ROAD.

DATE OF SURVEY: SEPT. 23, 1966 TO MAY 10, 1969 Wm. T. Wambach, Jr. S - 371  
 REGISTERED LAND SURVEYOR





Copy for Jerry Pilleath, RLS  
8/12/98

AMERICAN SOCIETY OF CIVIL ENGINEERS  
SURVEYING AND MAPPING DIVISION  
Committee on Land Surveying

December 2, 1977

Mr. Homer Ralph, L.S.  
Grant County Abstract Co.  
138-S. Madison  
Lancaster, WI 53813

Dear Homer:

Holy mackerel! Look what I found! I forgot to send this to you, the County Surveyor, for the permanent records of Grant County.

This form: "Record of U.S. Public Land Survey Control Station" has probably been modified by the Wisconsin Society of Land Surveyors and their County Surveyors' Association affiliated group. In remonumenting--which goes on every year in some fashion as surveys are done--it is most important that every surveyor make a record with the County Surveyor. I hope other surveyors working in Grant County are sending you such records.

Do you have a County budget for a remonumentation program under S.59.635 Wis Stats (copy attached)? Herman Hovelsrud is State President of Wis. Soc. of Land Surveyors, and could help you on making a presentation--with slides--of the value to the County and its taxpayers of providing a budget for this work.

Happy Holidays!

Sincerely,

*Bill*

Wm. T. Wambach, Jr., L.S., P.E.

WTW:lh

Encl.

cc: Herman Hovelsrud