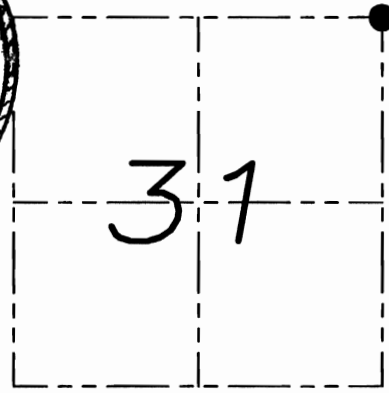


U.S. PUBLIC LAND SURVEY MONUMENT RECORD

Section 31, Town 1 North Range 1 West, Town of Hazel Green, Grant County, Wisconsin



● = CORNER LOCATION

CERTIFICATE

I, Larry L. Austin, do hereby certify that the corner location on this record was determined by me and/or under my direct supervision and that this U.S. public land survey monument record is correct and complete to the best of my knowledge and belief.

Larry L. Austin 6-8-09
 Larry L. Austin, S-1903 date

HISTORY OF CORNER

Corner was originally set in the 2nd quarter of 1832 by Lyon. In 1857 Everett tied to the corner. In 1879 Barber tied to the corner and set a stone. No other recent record of the corner was found.

CORNER EVIDENCE FOUND

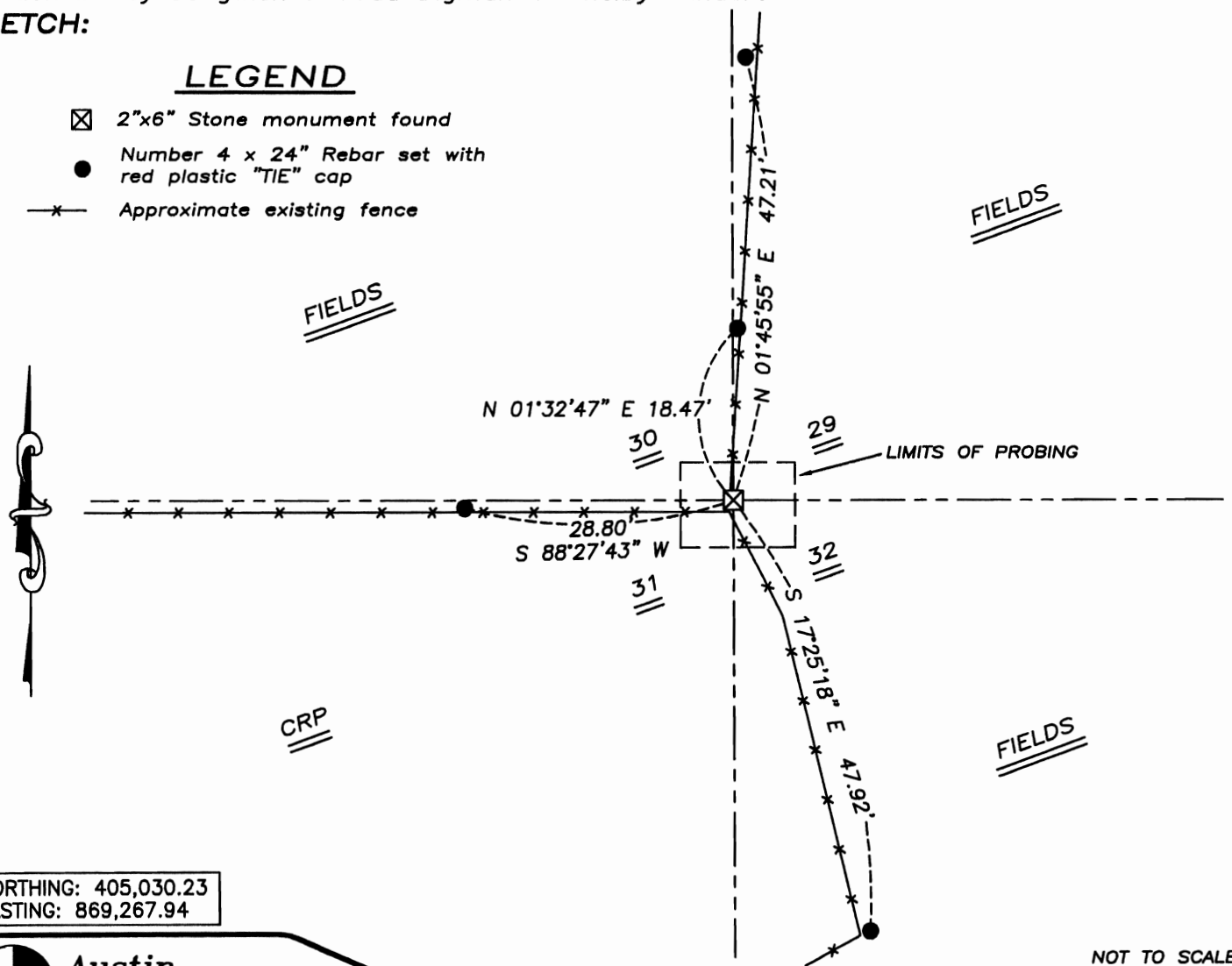
After probing and digging, I was able to locate the stone set by Barber. Verified this location using EDM & GPS methods.

DESCRIPTION OF CORNER AND WITNESS MONUMENTS, references and accessories used to perpetuate the original or re-established location of this corner. Witnesses to monument location Bobby Sedgwick & Brad Digman & Shelby Blindert

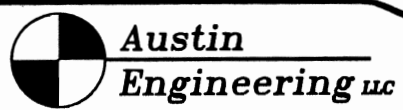
SKETCH:

LEGEND

- ☒ 2"x6" Stone monument found
- Number 4 x 24" Rebar set with red plastic "TIE" cap
- x— Approximate existing fence



NORTHING: 405,030.23
 EASTING: 869,267.94



4211 HWY 81 E, LANCASTER, WI 53813
 PHONE 608-723-6363 FAX 608-723-6702

JOB NUMBER 08S002
 FIELDBOOK: TDSR, 2910
 G:\T1NR1W\T1NR1W
 H:\TIE\T1NR1W\111

DRAWN BY: SW AUSTIN
 APPROVED: LL AUSTIN

NOT TO SCALE