

U.S. PUBLIC LAND SURVEY MONUMENT RECORD - GRANT COUNTY, WI

Section 28, Town 1 North Range 1 West, Town of Hazel Green (a)

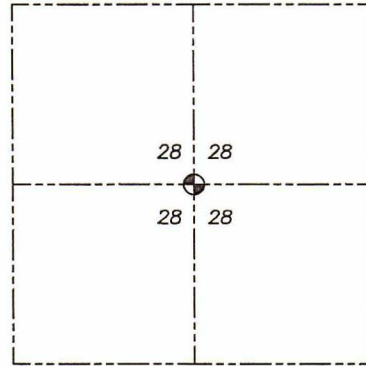
NOTE: This form is intended and designed to fulfill all requirements of the Wisconsin Administrative Code Chapter A-E 7.08, U.S. Public Land Survey Monument Record (3) (a) (b) (c) (d) (e) (f) (g) (h) (i).

CERTIFICATE: (i)

I, Aaron J. Austin, Wisconsin Professional Land Surveyor, do hereby certify that the corner location on this record was determined by me and/or under my direct supervision and that this U.S. Public Land Survey Monument Record is correct and complete to the best of my knowledge and belief.

Dated this 25th day of May, 2022

Aaron J. Austin, S-2922



⊕ = CORNER LOCATION

Grant County Coordinates:

NAD 83 (2011)
Northing: 407,613.77
Easting: 877,223.51

HISTORY OF CORNER ESTABLISHMENT:

E. Curtis Crook set an Aluminum Monument at the corner and prepared a tie sheet dated 1-16-1996.
Larry Austin set a Railroad Spike at the corner and prepared a tie sheet dated 3-3-1999.

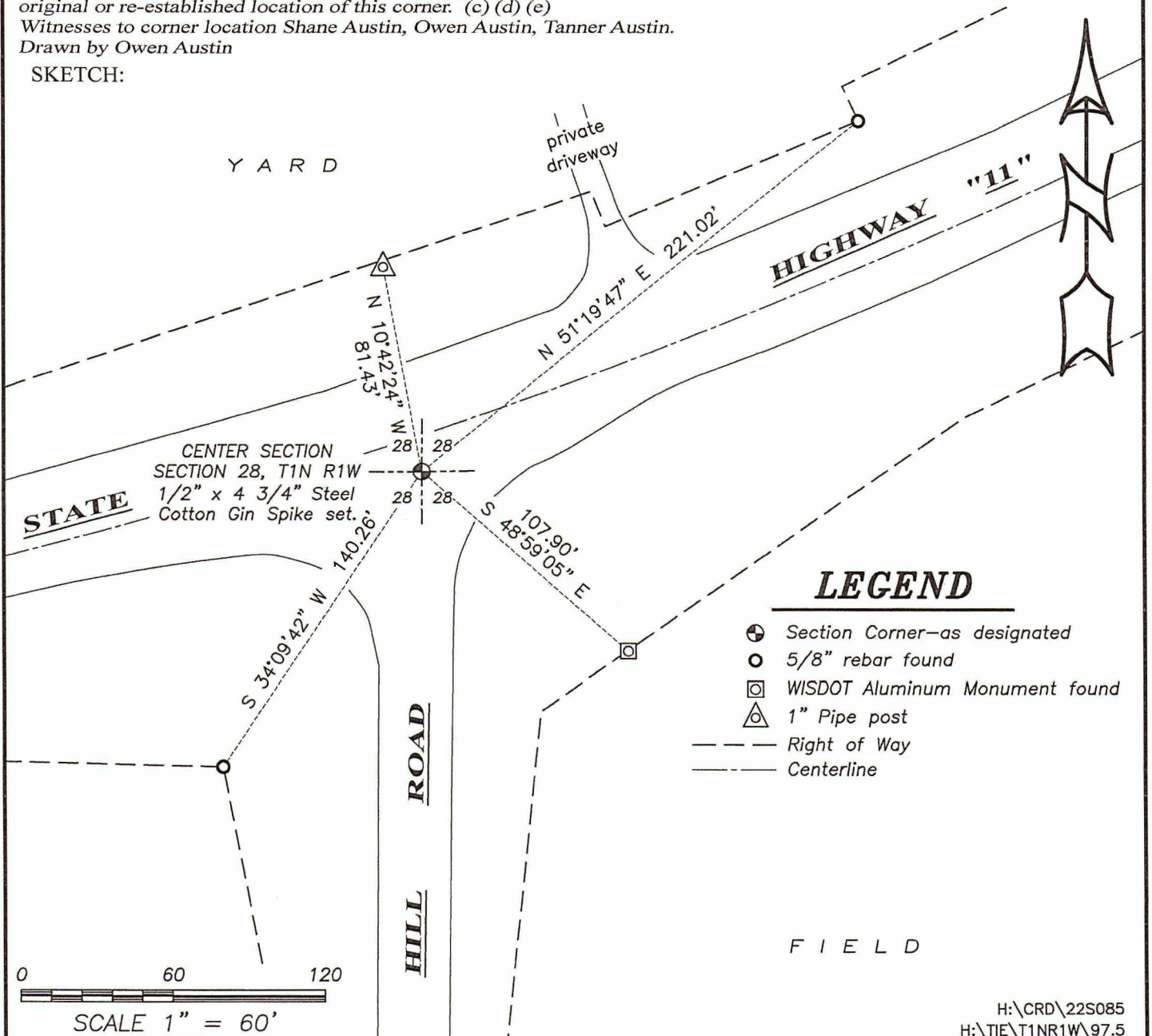
DESCRIPTION OF CORNER EVIDENCE FOUND: (b) (f) (g) (h)

The monument for the section corner was removed during reconstruction of Highway #11. I found three witness corners as established by Larry Austin. I established one additional witness corner after I verified it's location with G.P.S. and E.D.M. methods

DESCRIPTION OF CORNER AND WITNESS MONUMENTS, references and accessories used to perpetuate the original or re-established location of this corner. (c) (d) (e)

Witnesses to corner location Shane Austin, Owen Austin, Tanner Austin.
Drawn by Owen Austin

SKETCH:



RECEIVED MAR 26 1999

# GRANT COUNTY CERTIFIED LAND CORNER

CORNER NO. 96.5

**CERTIFICATE:**

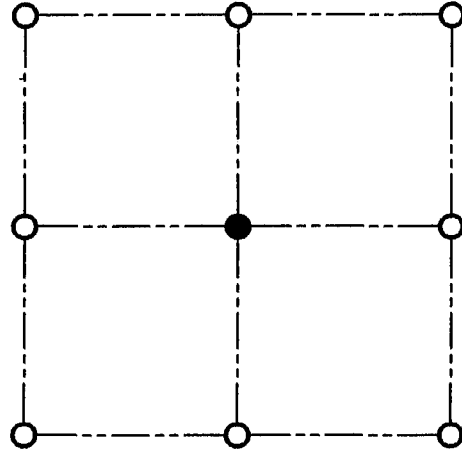
I, LARRY L. AUSTIN, DO HEREBY CERTIFY THAT ON THIRD DAY OF FEBRUARY, 1999, I FOUND CONFLICTING EVIDENCE OF THE CENTER OF SECTION 28, TOWN 1 NORTH, RANGE 1 WEST, OF THE FOURTH PRINCIPAL MERIDIAN, AND I RE-ESTABLISHED SAID CORNER ACCORDING TO THE WISCONSIN STATUTES AS SHOWN AND DESCRIBED HEREON.

DATED THIS THIRD DAY OF MARCH, 1999

*Larry L. Austin*  
LARRY L. AUSTIN S-1903



SEAL



● = CORNER LOCATION

**CENTER OF SECTION 28  
T 1 N R 1 W  
TOWN OF HAZEL GREEN**

**HISTORY OF ORIGINAL CORNER ESTABLISHMENT:**

CORNER WAS SET IN 1996 BY CURTIS CROOK.

**DESCRIPTION OF CORNER EVIDENCE FOUND:**

I FOUND AN ALUMINUM MONUMENT IN THE AREA OF THE CORNER. I FOUND THE ALUMINUM MONUMENT LOCATION TO BE INCORRECT IN RELATION TO CROOKS TIES AND THE ADJOINING CORNERS. I RESET THE CORNER WHERE CROOK SET IT PRIOR TO CONSTRUCTION. VERIFIED THIS LOCATION USING E.D.M. AND G.P.S. METHODS.

**DESCRIPTION OF CORNER AND WITNESS MONUMENTS, REFERENCES AND ACCESSORIES USED TO PERPETUATE THE ORIGINAL OR RE-ESTABLISHED LOCATION OF THIS CORNER:**

**WITNESS TO THE CORNER LOCATION:**

BOBBY SEDGWICK  
SHELBY BLINDERT

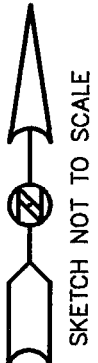
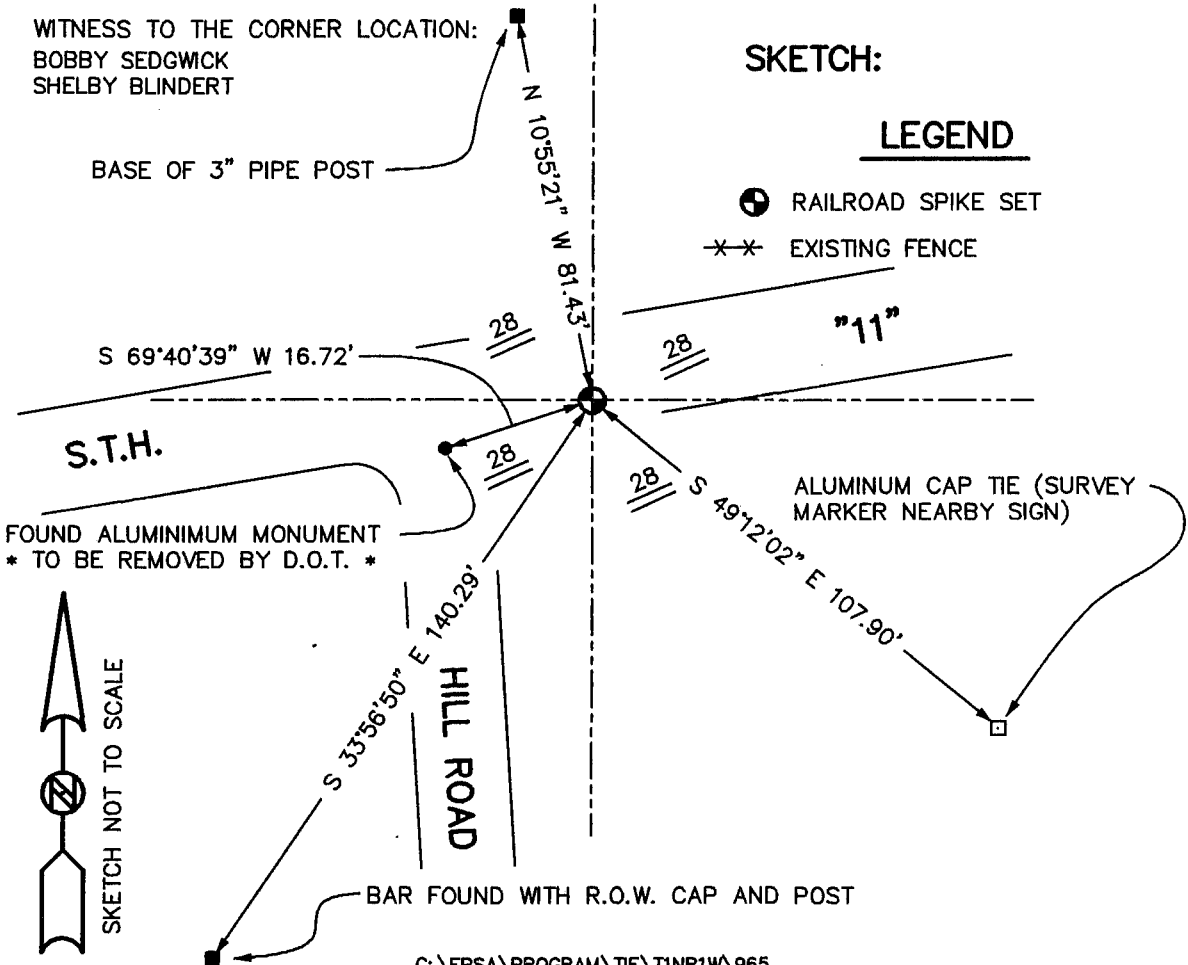
BASE OF 3" PIPE POST

**SKETCH:**

**LEGEND**

⊙ RAILROAD SPIKE SET

×× EXISTING FENCE



# U. S. PUBLIC LAND SURVEY MONUMENT RECORD

**INSTRUCTIONS:** This record shall show the location of the corner and shall include all of the following nine elements (a through i).

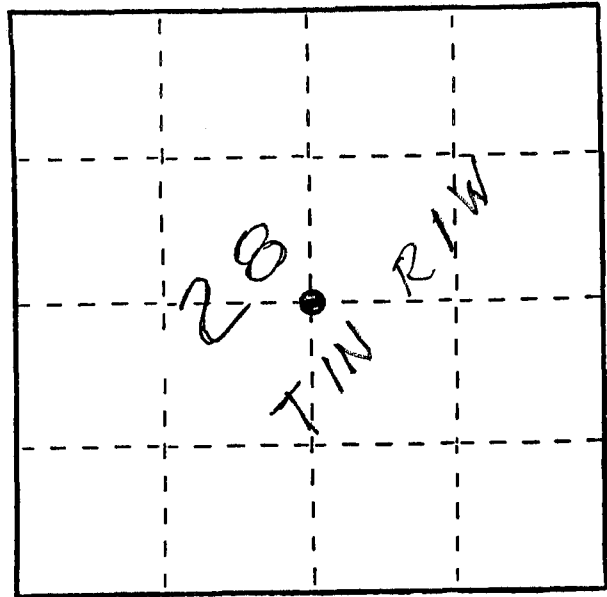
- (a) Identify the corner by reference to the U.S. public land survey system.  
 ● = Corner monument restored.

Center of Section 28

T1N R1W

Town of HAZEL GREEN

Grant County, WI.

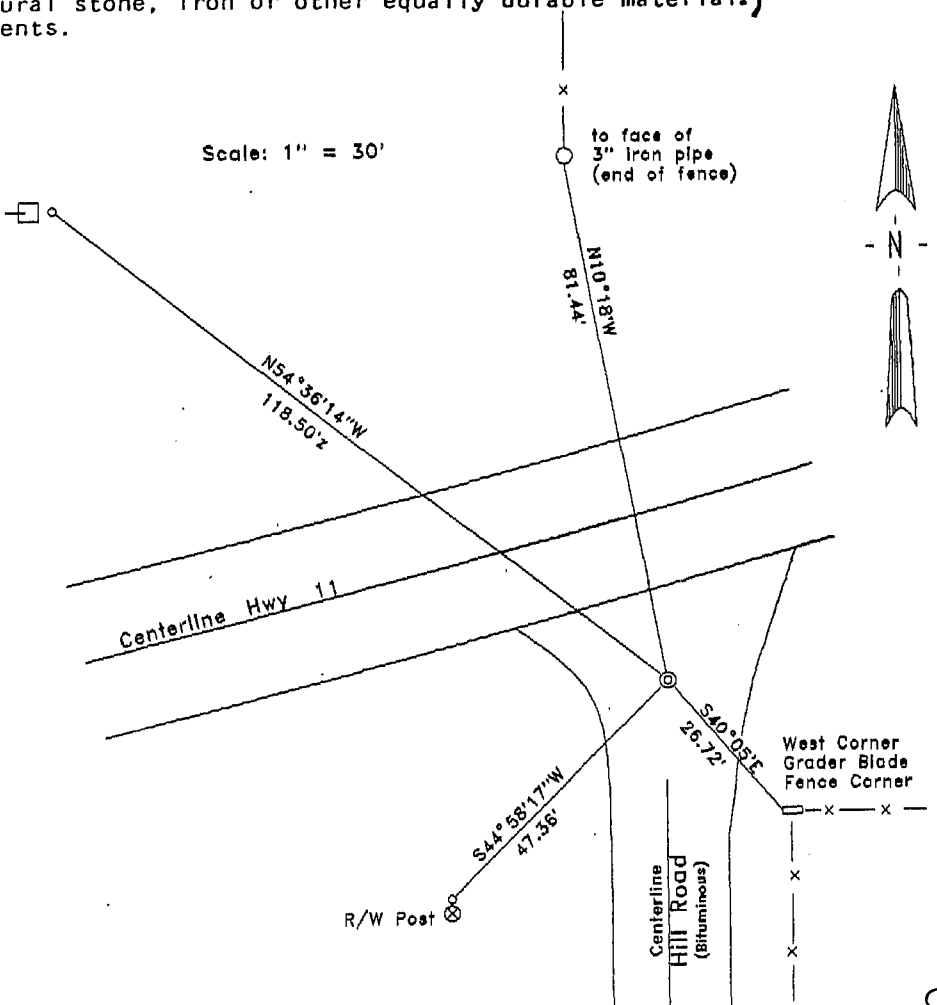


- (b) Describe any record evidence, monument evidence, occupational evidence, testimonial evidence or any other material evidence you considered, and whether the monument was found or placed.

Finding no record of this being previously established, set the corner in the manner prescribed.

- (c) In the plan view drawing below, provide reference ties to at least 4 witness monuments, or, if the location is within a municipality, to at least 2 witness monuments. (Witness monuments shall be made of concrete, natural stone, iron or other equally durable material.) Describe witness monuments.

- (d) Show a plan view drawing depicting the relevant monuments and reference ties which is sufficient in detail to enable accurate relocation of the corner monument if the corner monument is disturbed. Indicate north.



⊙ Corner Monument is 2" X 30" WI. D.O.T. Aluminum Monument with sign and post

○ 3/4" X 30" Rebar set

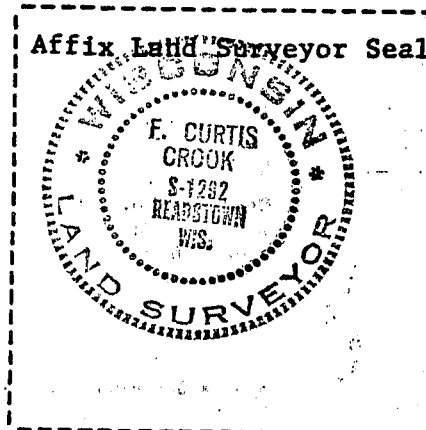
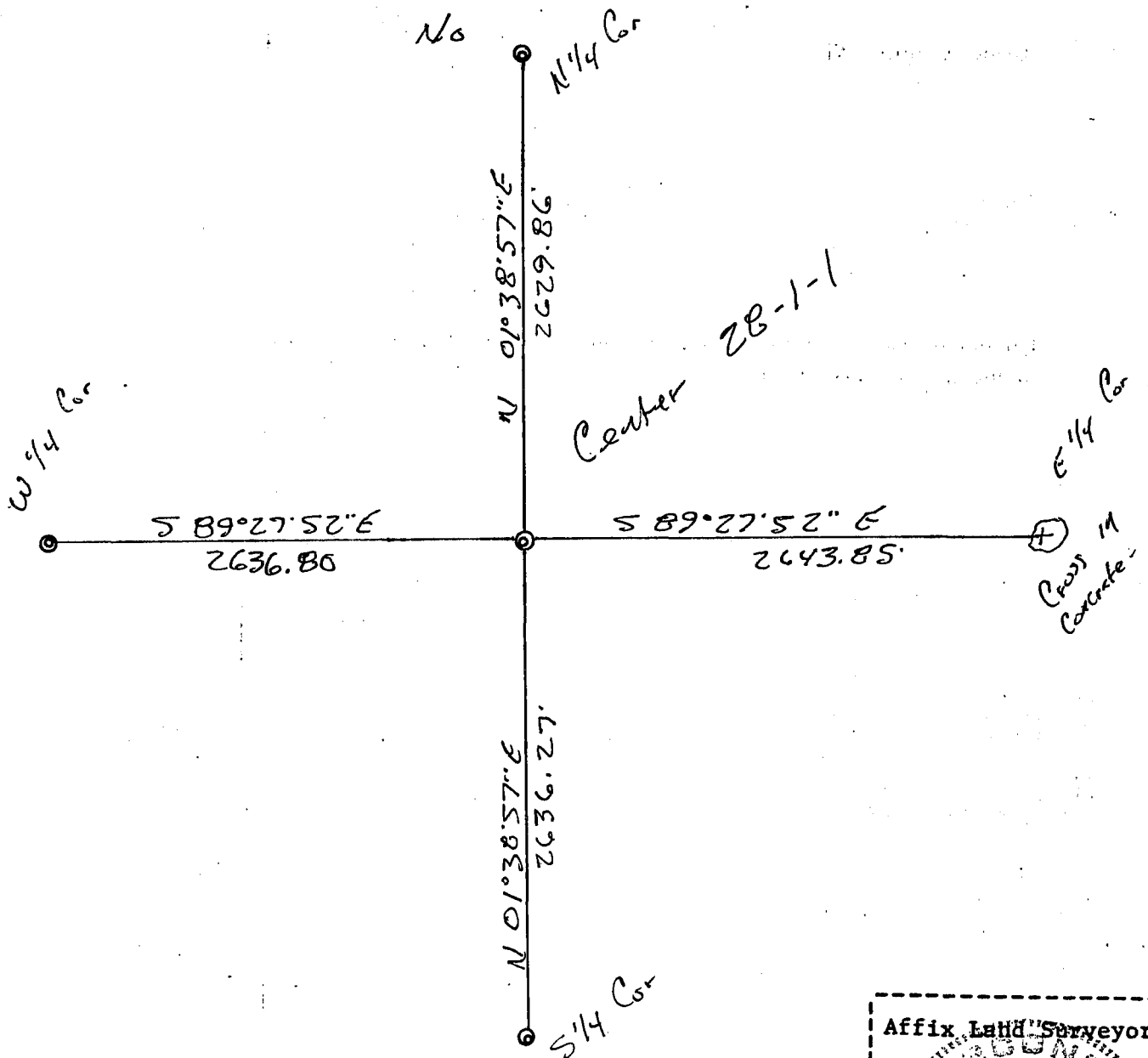
(e) Describe any material discrepancy between the location of the corner as restored or reestablished and the location of that corner as previously restored or reestablished by distance and direction. Show the discrepancy on the plan view drawing under (d), above. Show the distances between the corner as previously restored or reestablished and (1) the corner as restored or reestablished, and (2) to at least 2 of the witness monuments shown on the drawing in (d), above.

None

(f) Was the corner restored through acceptance of (1) an obliterated evidence location, or, (2) a found perpetuated location?

Not Applicable

(g&h) Was the corner reestablished through lost corner proportionate methods? If so, show the method, including the directions and distances to other public land survey corners used as evidence or used for proportioning in determining the corner location?



(1) I, F. Curtis Crook  
 (type or print name) certify that the corner location shown on this record was determined by me or under my direction and control and that this U.S. Public Land Survey Monument Record is correct and complete to the best of my knowledge and belief.

F. Curtis Crook 1-16-96