

U.S. PUBLIC LAND SURVEY MONUMENT RECORD - GRANT COUNTY, WI

Section 29, Town 1 North Range 1 West, Town of Hazel Green (a)

NOTE: This form is intended and designed to fulfill all requirements of the Wisconsin Administrative Code Chapter A-E 7.08, U.S. Public Land Survey Monument Record (3) (a) (b) (c) (d) (e) (f) (g) (h) (i).

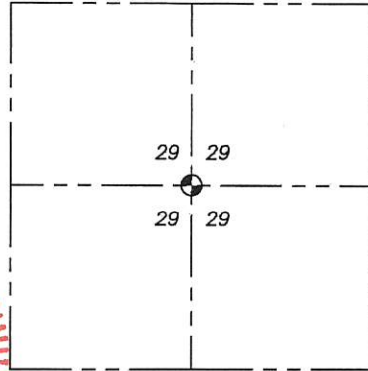
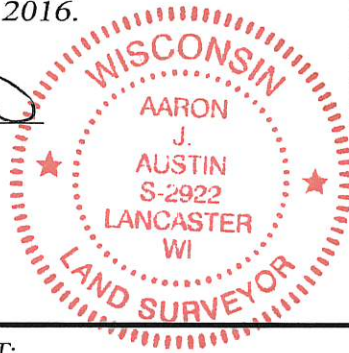
Corner No. 95.5

CERTIFICATE: (i)

I, Aaron J. Austin, Wisconsin Professional Land Surveyor, do hereby certify that the corner location on this record was determined by me and/or under my direct supervision and that this U.S. Public Land Survey Monument Record is correct and complete to the best of my knowledge and belief.

Dated this 19th day of December, 2016.

Aaron J. Austin
 Aaron J. Austin, S-2922



⊕ = CORNER LOCATION

Grant County Coordinates:
 NAD 83 (2011)
 Northing: 407,642.66
 Easting: 871,954.63

HISTORY OF CORNER ESTABLISHMENT:

Corner was not set with original survey.
 1849-Struntz established the corner on a Survey filed in Book B, Page 162.
 1852-Everett tied to the corner on a Survey filed in Book B, Page 293.
 1875-McFall tied to the corner on a Survey filed in Book C, Page 261.
 1879-Barber tied to the corner on a Survey filed in Book D, Page 37.
 1996-E. Curtis Crook reset the corner and filed a Survey Monument Record.

DESCRIPTION OF CORNER EVIDENCE FOUND: (b) (f) (g) (h)

I found two witness corners established by Crook. I reset the corner from the two witness corner of Crook. I set two additional witness corners after I verified it's location. County Coordinates were established using WISCORS (NAD 83) 2011 and G.P.S. observations.

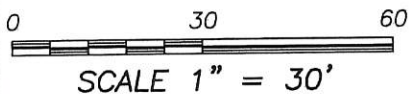
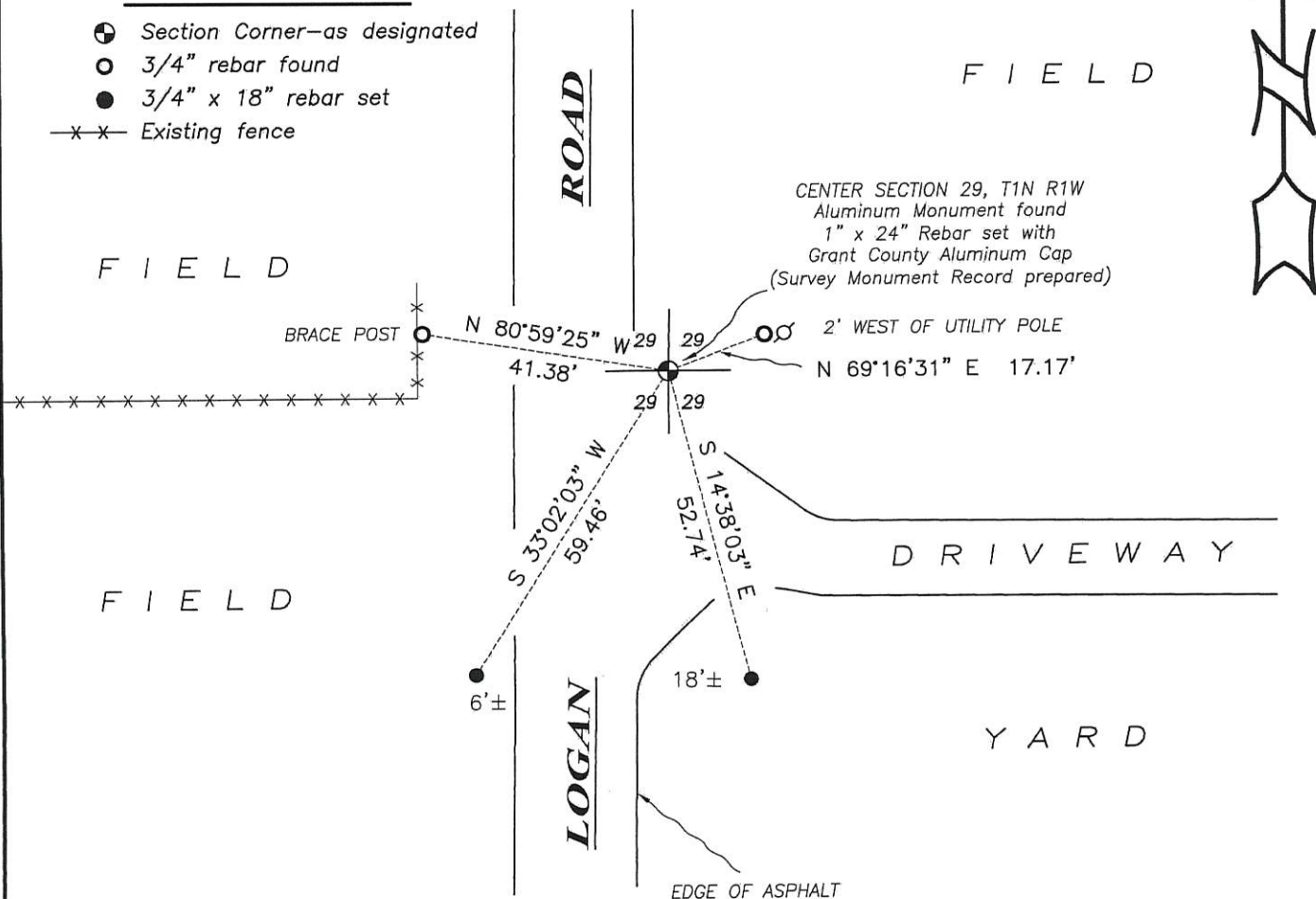
DESCRIPTION OF CORNER AND WITNESS MONUMENTS, references and accessories used to perpetuate the original or re-established location of this corner. (c) (d) (e)

Witnesses to corner location Shane Austin.

SKETCH:

LEGEND

- ⊕ Section Corner—as designated
- 3/4" rebar found
- 3/4" x 18" rebar set
- x-x- Existing fence



U.S. PUBLIC LAND SURVEY MONUMENT RECORD - GRANT COUNTY, WI

Section 29, Town 1 North Range 1 West, Town of Hazel Green (a)

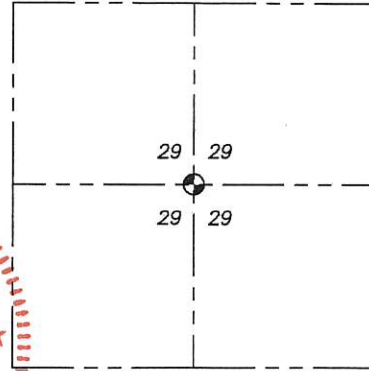
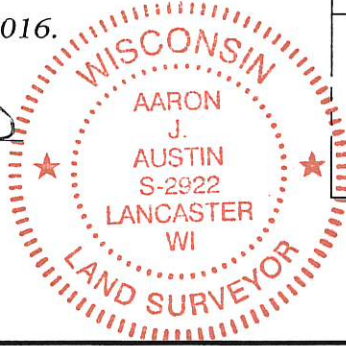
NOTE: This form is intended and designed to fulfill all requirements of the Wisconsin Administrative Code Chapter A-E 7.08, U.S. Public Land Survey Monument Record (3) (a) (b) (c) (d) (e) (f) (g) (h) (i).

CERTIFICATE: (i)

I, Aaron J. Austin, Wisconsin Professional Land Surveyor, do hereby certify that the corner location on this record was determined by me and/or under my direct supervision and that this U.S. Public Land Survey Monument Record is correct and complete to the best of my knowledge and belief.

Dated this 19th day of December, 2016.

Aaron J. Austin
 Aaron J. Austin, S-2922



⊙ = CORNER LOCATION

Grant County Coordinates:
 NAD 83 (2011)
 Northing: 407,642.66
 Easting: 871,954.63

HISTORY OF CORNER ESTABLISHMENT:

Corner was not set with original survey.
 1849-Struntz established the corner on a Survey filed in Book B, Page 162.
 1852-Everett tied to the corner on a Survey filed in Book B, Page 293.
 1875-McFall tied to the corner on a Survey filed in Book C, Page 261.
 1879-Barber tied to the corner on a Survey filed in Book D, Page 37.
 1996-E. Curtis Crook reset the corner and filed a Survey Monument Record.

DESCRIPTION OF CORNER EVIDENCE FOUND: (b) (f) (g) (h)

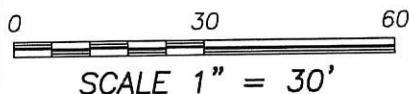
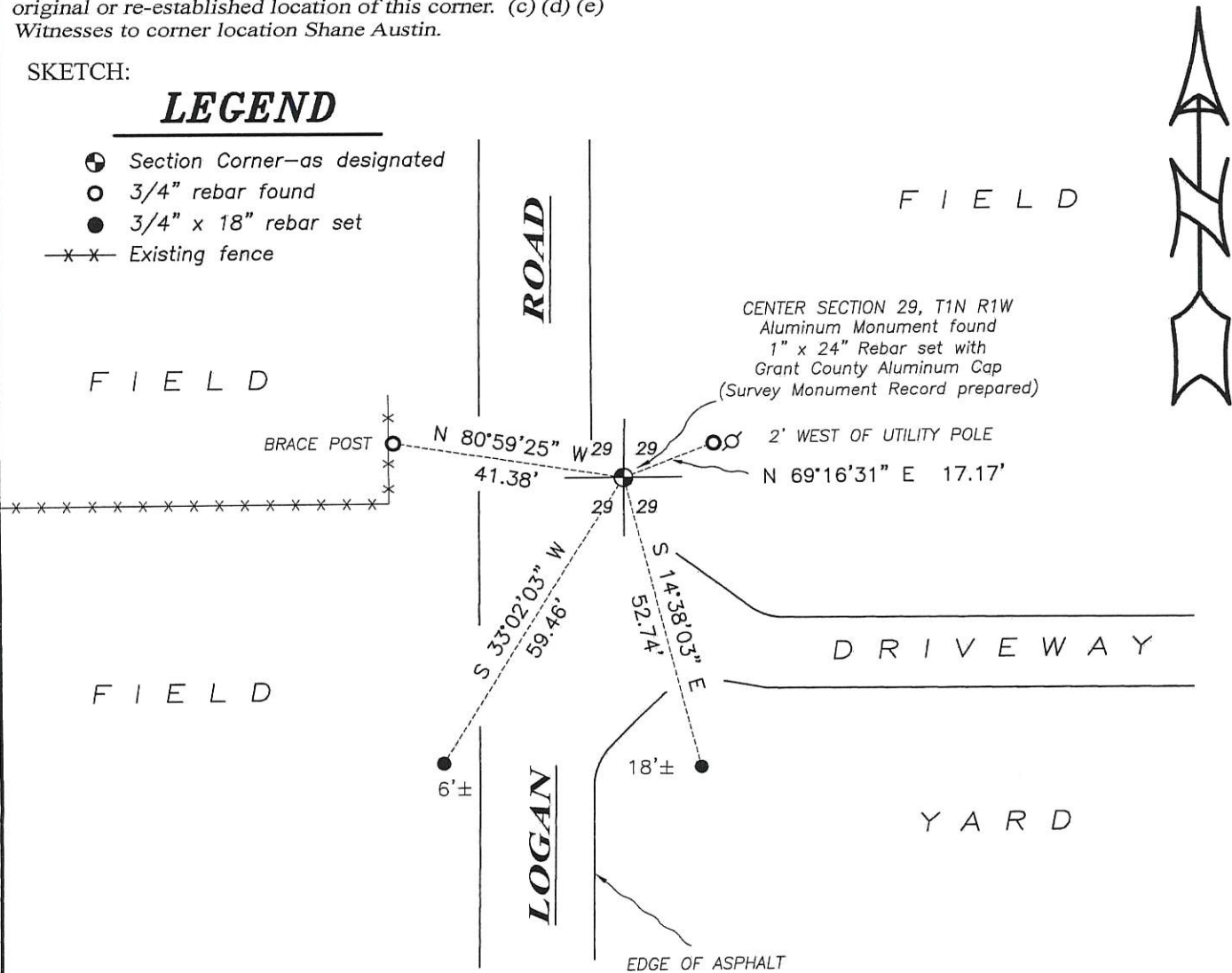
I found two witness corners established by Crook. I reset the corner from the two witness corner of Crook. I set two additional witness corners after I verified it's location. County Coordinates were established using WISCORS (NAD 83) 2011 and G.P.S. observations.

DESCRIPTION OF CORNER AND WITNESS MONUMENTS, references and accessories used to perpetuate the original or re-established location of this corner. (c) (d) (e)
 Witnesses to corner location Shane Austin.

SKETCH:

LEGEND

- ⊙ Section Corner—as designated
- 3/4" rebar found
- 3/4" x 18" rebar set
- x-x- Existing fence



U. S. PUBLIC LAND SURVEY MONUMENT RECORD

INSTRUCTIONS: This record shall show the location of the corner and shall include all of the following nine elements (a through i).

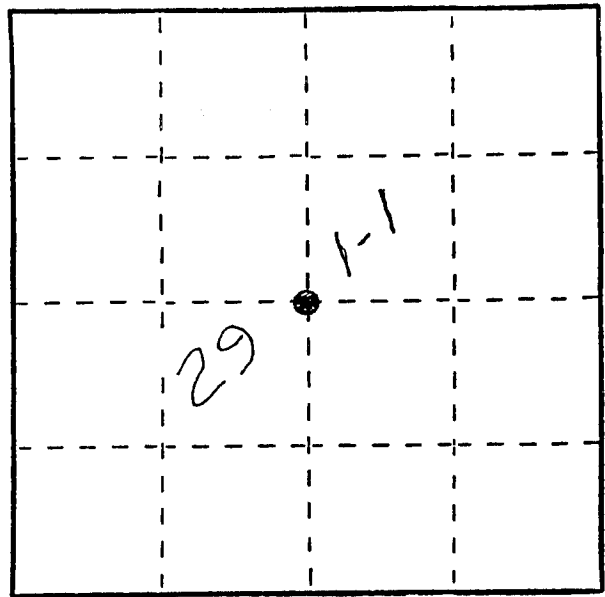
- (a) Identify the corner by reference to the U.S. public land survey system.
 ● = Corner monument restored.

Center of Section 29

T1N R1W

Town of HAZEL GREEN

Grant County, WI.

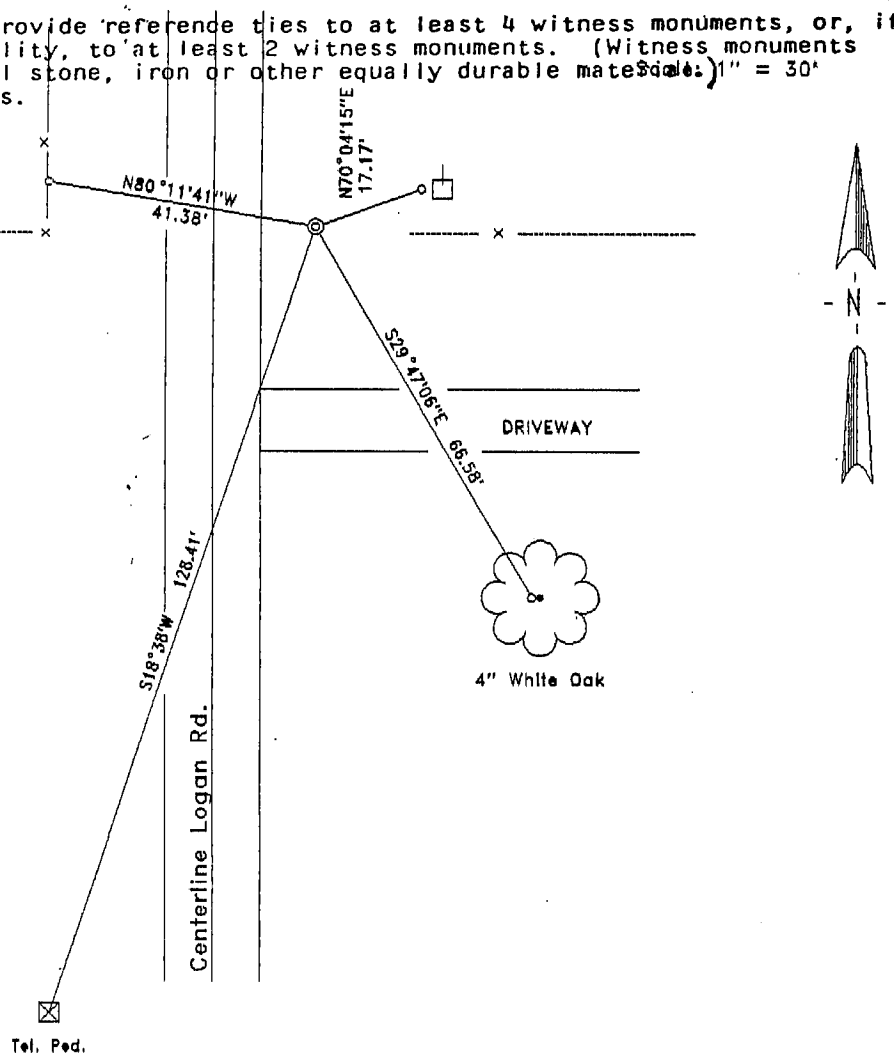


- (b) Describe any record evidence, monument evidence, occupational evidence, testimonial evidence or any other material evidence you considered, and whether the monument was found or placed.

Found no evidence from various surveys in the latter half of 1800, including a search with backhoes for stones. Established the corner in the prescribed manner.

- (c) In the plan view drawing below, provide reference ties to at least 4 witness monuments, or, if the location is within a municipality, to at least 2 witness monuments. (Witness monuments shall be made of concrete, natural stone, iron or other equally durable materials.)
 Describe witness monuments.

- (d) Show a plan view drawing depicting the relevant monuments and reference ties which is sufficient in detail to enable accurate relocation of the corner monument if the corner monument is disturbed. Indicate north.



○ 3/4" X 30" Rebar set

◎ Corner Monument Is 2" X 30" WI. D.O.T. Aluminum Monument

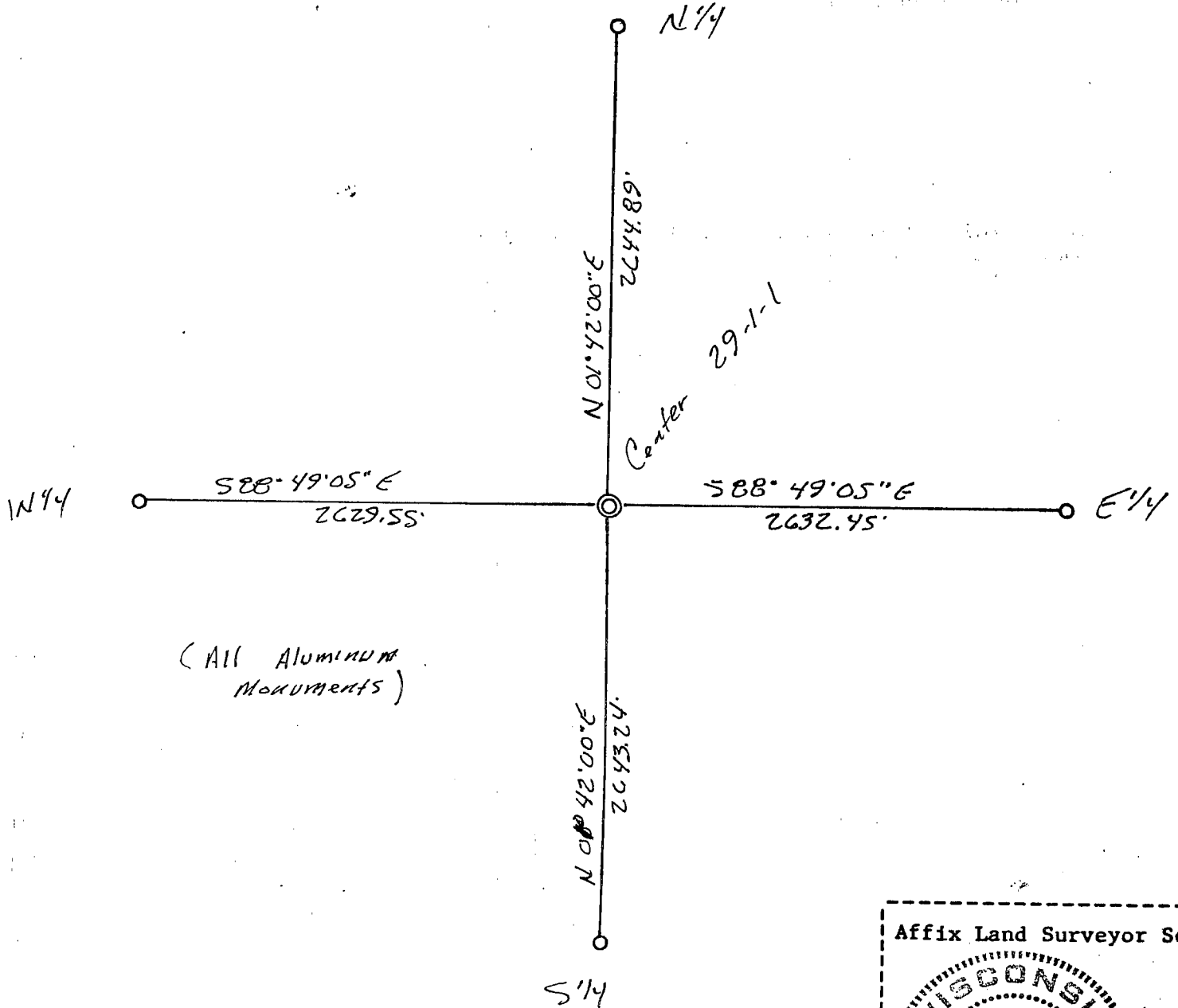
(e) Describe any material discrepancy between the location of the corner as restored or reestablished and the location of that corner as previously restored or reestablished by distance and direction. Show the discrepancy on the plan view drawing under (d), above. Show the distances between the corner as previously restored or reestablished and (1) the corner as restored or reestablished, and (2) to at least 2 of the witness monuments shown on the drawing in (d), above.

None

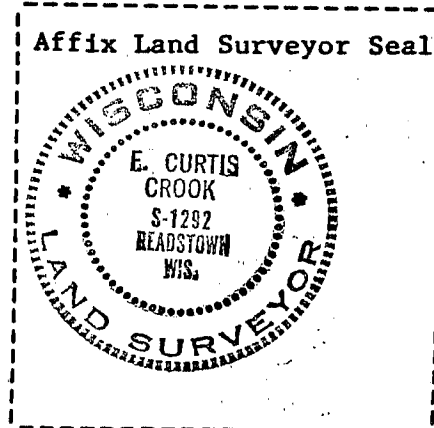
(f) Was the corner restored through acceptance of (1) an obliterated evidence location, or, (2) a found perpetuated location?

Not Applicable

(g&h) Was the corner reestablished through lost corner proportionate methods? If so, show the method, including the directions and distances to other public land survey corners used as evidence or used for proportioning in determining the corner location?



(All ALUMINUM MONUMENTS)



(i) I, F. Curtis Crook
 (type or print name) certify that the corner location shown on this record was determined by me or under my direction and control and that this U.S. Public Land Survey Monument Record is correct and complete to the best of my knowledge and belief.

F. Curtis Crook 1-14-96