

11093

Grant County Certified U.S. Public Land Survey Monument Record

DATUM : NAD83 (2011) WISCORS

GRANT COUNTY COORDINATES

CONTROL IS A COMBINATION OF GPS AND CONVENTIONAL FIELD CONTROL.

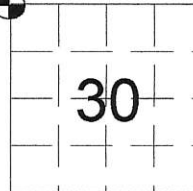
NORTH 410320.72

EAST 863975.87

The Northwest corner of Section 30, Town 1 North, Range 1 West,
Town of Hazel Green, Grant County, Wisconsin.

(A) Identify the corner by reference to the U.S. public land survey system.

WITNESS TO CORNER LOCATION:



(E) The corner was restored through acceptance of
(1) an obliterated evidence location
(2) a found perpetuated location
(3) lost corner proportionate methods



= Corner monument restored or maintained.

Sec. 30, T 1 N, R 1 W

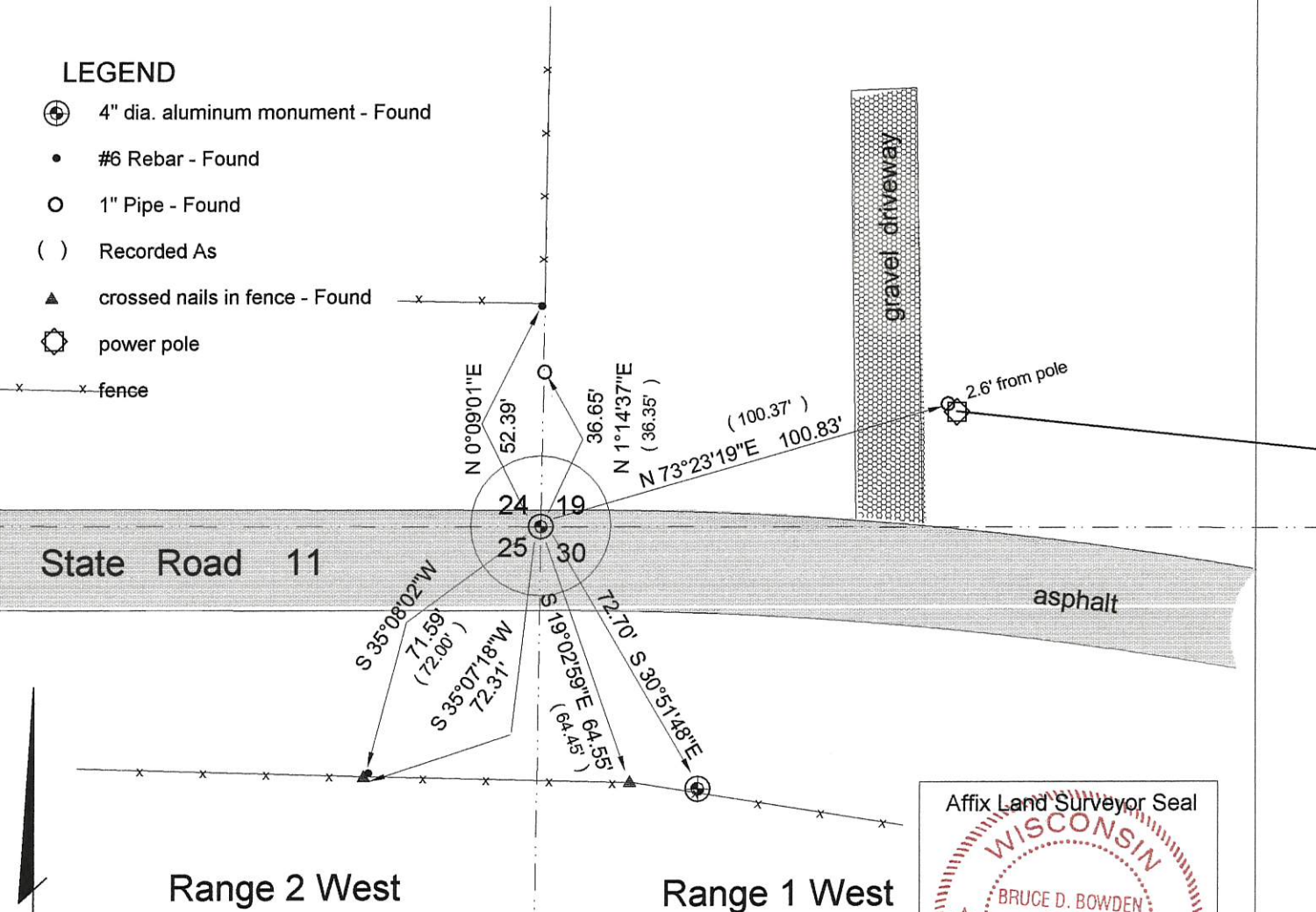
(B) Describe any record evidence, monument evidence, occupational evidence, testimonial evidence or any other material evidence you considered, and whether the monument was placed or found.

I found the aluminum monument that matches the ties from the Turner monument record dated July 31, 1987. There was no record of the aluminum monument or the other ties found. It is my belief there is a record with the Department of Transportation that will show other ties.

(C, D, F, G) Plan view drawing below, provide reference ties to at least 4 witness monuments, or, if the location is within a municipality, to at least 2 witness monuments. Depict the relevant monuments and reference ties in sufficient detail to enable accurate relocation of the corner monument, if disturbed. Indicate North. Describe any material discrepancy between the location of the corner as restored or reestablished and the location of that corner as previously monumented by distance and direction. Show the discrepancy on the plan view and the distances between the corner as previously monumented. If the corner was reestablished through lost corner proportionate methods, show the method, including the directions and distances to other public land survey corners used for proportioning in determining the corner location.

LEGEND

- 4" dia. aluminum monument - Found
- #6 Rebar - Found
- 1" Pipe - Found
- Recorded As
- crossed nails in fence - Found
- power pole
- fence



Range 2 West

Range 1 West

Scale : 1" = 40'

(H) I, Bruce D. Bowden do certify that the corner location shown on this record was determined by me or under my direction and control and that this U.S. Public Land Survey Monument Record is correct and complete to the best of my knowledge and belief.

Bruce D. Bowden 10/20/17
Signature Date



Romportl No. 20101190040
20102240000
Grant Co. Index No. 93
81

U.S. PUBLIC LAND SURVEY MONUMENT RECORD

AUG 7 1987

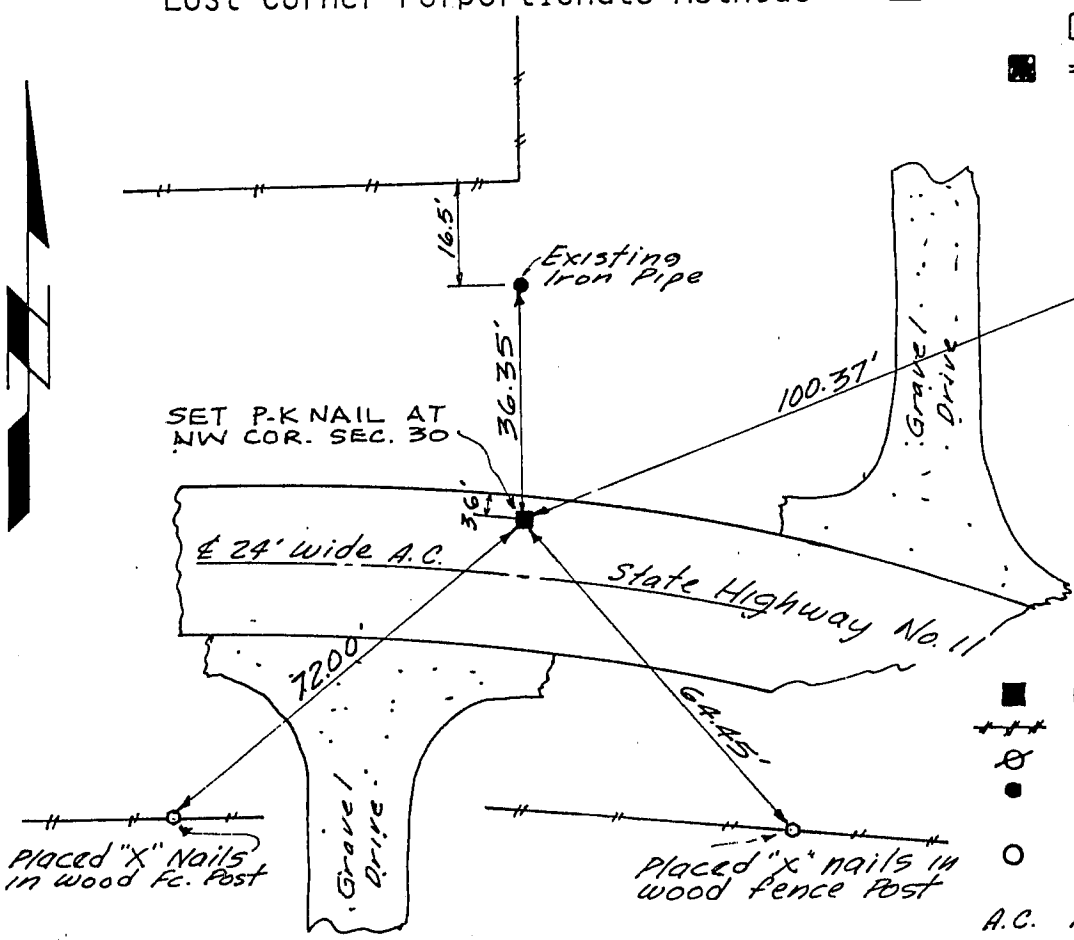
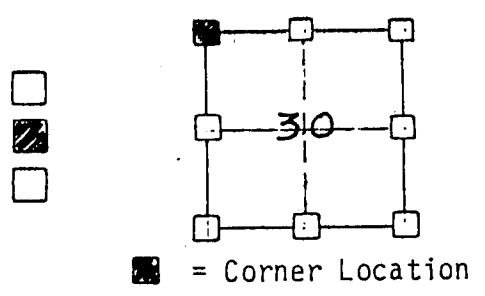
GRANT COUNTY, WISCONSIN

SECTION 30 TOWNSHIP 1N RANGE 1W CORNER NW

EVIDENCE: No existing evidence of corner in area. Original ties gone. Used north-south fence line & Highway No. 11 tangent line intersect to establish cor.

MONUMENT: Found Placed

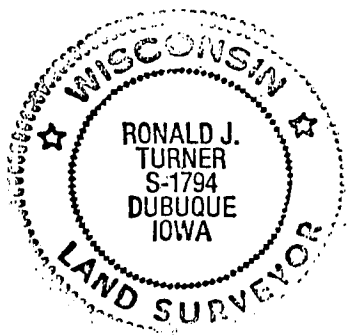
METHOD: Accepted Existing Location
Accepted Occupation
Lost Corner Porportionate Methods



- LEGEND
- Government Corner
 - +++ Existing Fence Lines
 - ⊗ Power Pole
 - Existing Iron Pipe as shown
 - Placed Rebar as shown
 - A.C. Asphaltic Concrete

HISTORY & OTHER INFORMATION: Old Highway No. 11 right-of-way & Constr. plans show & highway to be on apparent section line. New plans make no reference to sec. line.

I, Ronald J. Turner, hereby certify that the corner location shown hereon this record was determined by me or under my direction and control and that this U.S. Public Land Survey Monument Record is correct and complete to the best of my knowledge and belief.



July 31, 1987 Ronald J. Turner
Date Registered Land Surveyor
No. S-1794

Title <u>Monument Record</u> <u>NW Cor. Sec. 30, 1N, 1W</u>		Sheet <u>1</u> of <u>1</u>
Date <u>7-31-87</u>	Scale <u>1"=30'</u>	Drawing No.
Drawn <u>R. J. T.</u>	Field Book <u>WE-1-85</u>	
Reviewed	Revision	

93