

11092

Grant County Certified U.S. Public Land Survey Monument Record

DATUM : NAD83 (2011) WISCORS

GRANT COUNTY COORDINATES

CONTROL IS A COMBINATION OF GPS AND CONVENTIONAL FIELD CONTROL.

NORTH 410313.02

EAST 866721.89

The South quarter corner of Section 19, Town 1 North, Range 1 West, Town of Hazel Green, Grant County, Wisconsin.

(A) Identify the corner by reference to the U.S. public land survey system.

WITNESS TO CORNER LOCATION:



(E) The corner was restored through acceptance of
~~(1) an obliterated~~
evidence location
(2) a found perpetuated location
~~(3) lost corner proportionate~~
methods



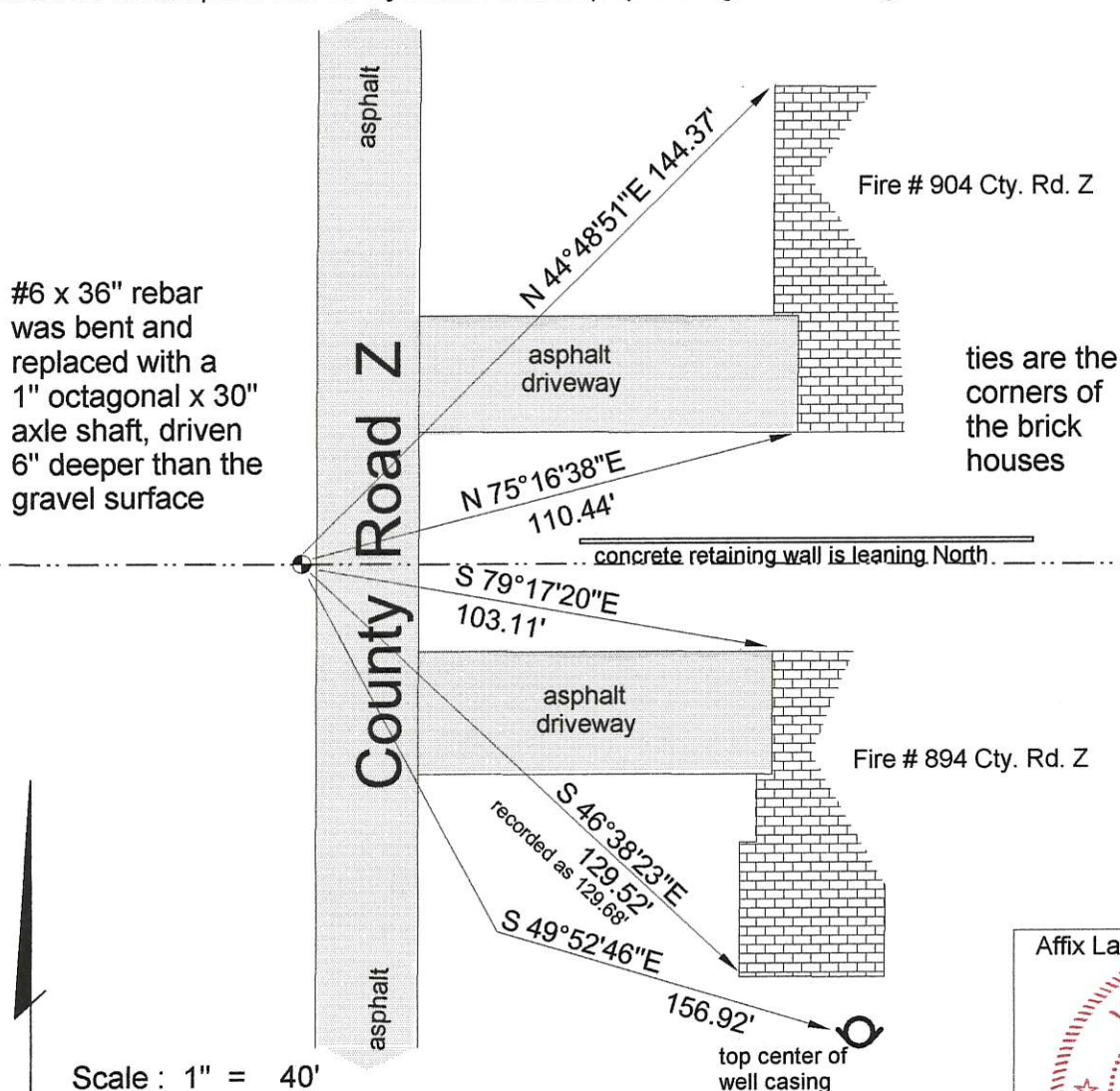
= Corner monument restored or maintained.

Sec. 19, T 1 N, R 1 W

(B) Describe any record evidence, monument evidence, occupational evidence, testimonial evidence or any other material evidence you considered, and whether the monument was placed or found.

I found and accepted the bent #6 rebar from the Ronald Turner Monument Record dated July 31, 1987. It was replaced with a 1" octagonal x 30" axle shaft driven 6" below the gravel surface.

(C, D, F, G) Plan view drawing below, provide reference ties to at least 4 witness monuments, or, if the location is within a municipality, to at least 2 witness monuments. Depict the relevant monuments and reference ties in sufficient detail to enable accurate relocation of the corner monument, if disturbed. Indicate North. Describe any material discrepancy between the location of the corner as restored or reestablished and the location of that corner as previously monumented by distance and direction. Show the discrepancy on the plan view and the distances between the corner as previously monumented. If the corner was reestablished through lost corner proportionate methods, show the method, including the directions and distances to other public land survey corners used for proportioning in determining the corner location.



(H) I, Bruce D. Bowden do certify that the corner location shown on this record was determined by me or under my direction and control and that this U.S. Public Land Survey Monument Record is correct and complete to the best of my knowledge and belief.

Bruce D. Bowden 10/20/17
Signature Date



Romportl No. 20101190020
Grant Co. Index No. 92

U.S. PUBLIC LAND SURVEY MONUMENT RECORD

AUG 7 1987

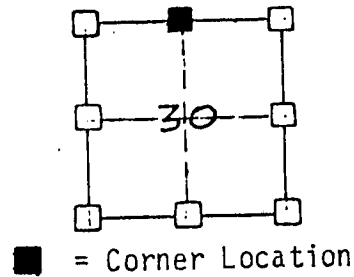
GRANT COUNTY, WISCONSIN

RECEIVED

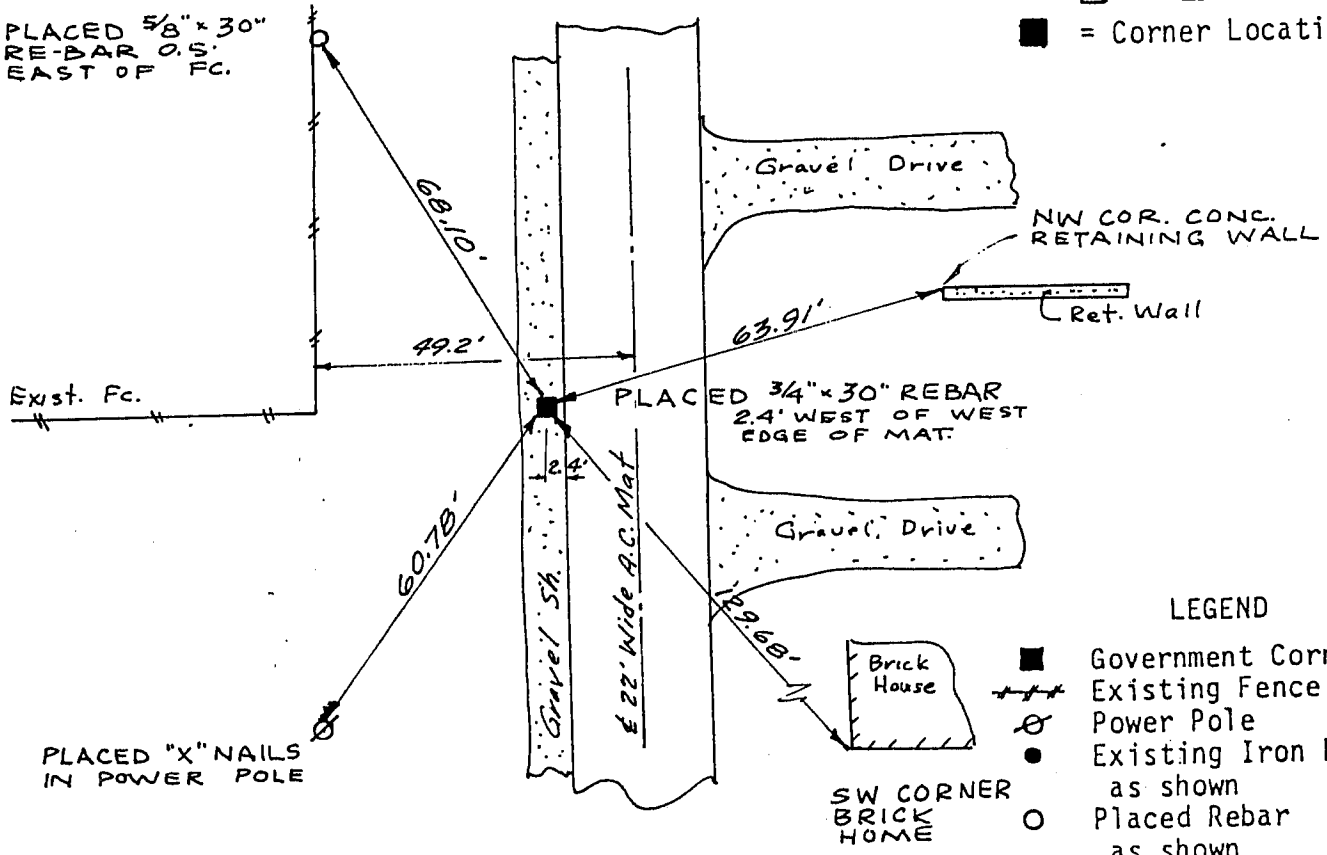
SECTION 30 TOWNSHIP 1N RANGE 1W CORNER N 1/4

EVIDENCE: No stone or pin could be found. Placed corner on north line of section 30 as occupied this date. East-west location prorated from original survey notes.

MONUMENT: Found Placed
METHOD: Accepted Existing Location
Accepted Occupation
Lost Corner Porportionate Methods



PLACED 5/8" x 30" RE-BAR 0.5' EAST OF FC.



LEGEND
■ Government Corner
--- Existing Fence Lines
⊗ Power Pole
● Existing Iron Pipe as shown
○ Placed Rebar as shown

HISTORY & OTHER INFORMATION: This corner placed 2745.95 feet east of Northwest corner section 30.

I, Ronald J. Turner, hereby certify that the corner location shown hereon this record was determined by me or under my direction and control and that this U.S. Public Land Survey Monument Record is correct and complete to the best of my knowledge and belief.



Date July 31, 1987 Ronald J. Turner
Registered Land Surveyor
No. 5-1794

W ASSOCIATES P.C.
3210 St. Joseph Dr., R.R.#2 • Dubuque, IA 52001 • (319) 566-2464
P.O. Box 275 • Galena, IL 61036 • (815) 777-0350

Title <u>Monument Record</u> <u>Sec. 30, T1N, R1W 4th P.M.</u>		Sheet <u>1</u> of <u>1</u>
Date <u>7-31-87</u>	Scale <u>1"=30'</u>	Drawing No.
Drawn <u>R. J. T.</u>	Field Book <u>WI-1-85</u>	
Reviewed	Revision	