

# U.S. PUBLIC LAND SURVEY MONUMENT RECORD - GRANT COUNTY, WI

Section 29, Town 1 North Range 1 West, Town of Hazel Green (a)

NOTE: This form is intended and designed to fulfill all requirements of the Wisconsin Administrative Code Chapter A-E 7.08, U.S. Public Land Survey Monument Record (3) (a) (b) (c) (d) (e) (f) (g) (h) (i).

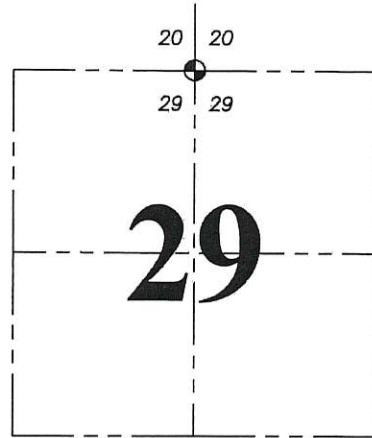
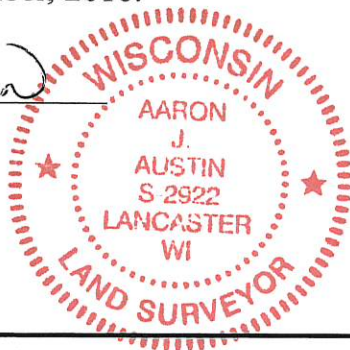
## Corner No. 90

**CERTIFICATE:** (i)

I, Aaron J. Austin, Wisconsin Professional Land Surveyor, do hereby certify that the corner location on this record was determined by me and/or under my direct supervision and that this U.S. Public Land Survey Monument Record is correct and complete to the best of my knowledge and belief.

Dated this 19th day of December, 2016.

*Aaron J. Austin*  
 Aaron J. Austin, S-2922



⊙ = CORNER LOCATION

Grant County Coordinates:  
 NAD 83 (2011)  
 Northing: 410,287.02  
 Easting: 872,007.93

HISTORY OF CORNER ESTABLISHMENT:

1832-Lucius Lyon set the original corner.  
 1996-E. Curtis Crook reset the corner and filed a Survey Monument Record.

DESCRIPTION OF CORNER EVIDENCE FOUND: (b) (f) (g) (h)

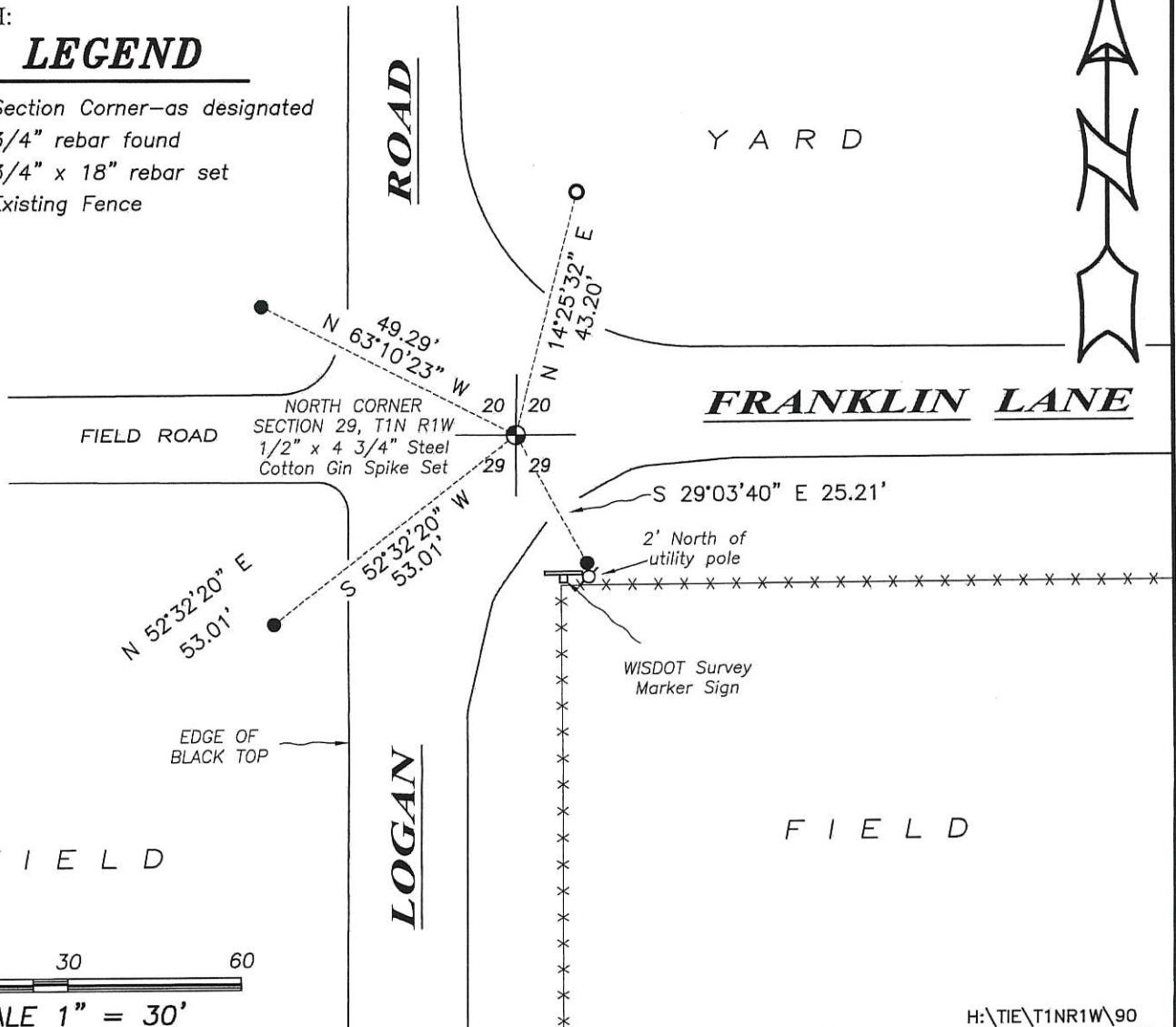
I reset the corner at the projection of the South 1/4 corner of Section 29 through the Center of Section 29 at the recorded distance of 5,288.16 feet from E. Curtis Crook. This coincides with one witness corner found. I set three additional witness corners after I verified the corner's location. County Coordinates were established using WISCORS (NAD 83) 2011 and G.P.S. observations.

DESCRIPTION OF CORNER AND WITNESS MONUMENTS, references and accessories used to perpetuate the original or re-established location of this corner. (c) (d) (e)  
 Witnesses to corner location Shane Austin.

SKETCH:

**LEGEND**

- ⊙ Section Corner—as designated
- 3/4" rebar found
- 3/4" x 18" rebar set
- x-x- Existing Fence



# U.S. PUBLIC LAND SURVEY MONUMENT RECORD - GRANT COUNTY, WI

Section 29, Town 1 North Range 1 West, Town of Hazel Green (a)

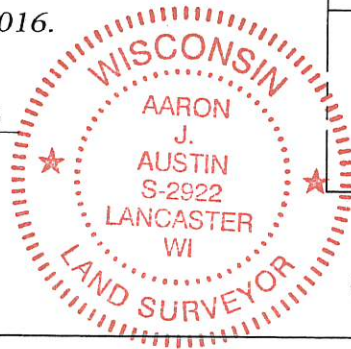
NOTE: This form is intended and designed to fulfill all requirements of the Wisconsin Administrative Code Chapter A-E 7.08, U.S. Public Land Survey Monument Record (3) (a) (b) (c) (d) (e) (f) (g) (h) (i).

**CERTIFICATE: (i)**

I, Aaron J. Austin, Wisconsin Professional Land Surveyor, do hereby certify that the corner location on this record was determined by me and/or under my direct supervision and that this U.S. Public Land Survey Monument Record is correct and complete to the best of my knowledge and belief.

Dated this 19th day of December, 2016.

*Aaron J. Austin*  
Aaron J. Austin, S-2922



⊙ = CORNER LOCATION

HISTORY OF CORNER ESTABLISHMENT:

- 1832-Lucius Lyon set the original corner.
- 1875-McFall tied to the corner on a Survey filed in Book C, Page 261.
- 1879-Barber tied to the corner on a Survey filed in Book D, Page 37.
- 1996-F. Curtis Crook reset the corner and filed a Survey Monument Record

DESCRIPTION OF CORNER EVIDENCE FOUND: (b) (f) (g) (h)

I found one witness corner as established by Crook. I reset the corner by projecting a line from the South 1/4 corner through the center of Section 29 and set at the recorded distance of 2644.89' based upon a section summary by F. Curtis Crook dated 3-11-1996. I set three additional witness corners.

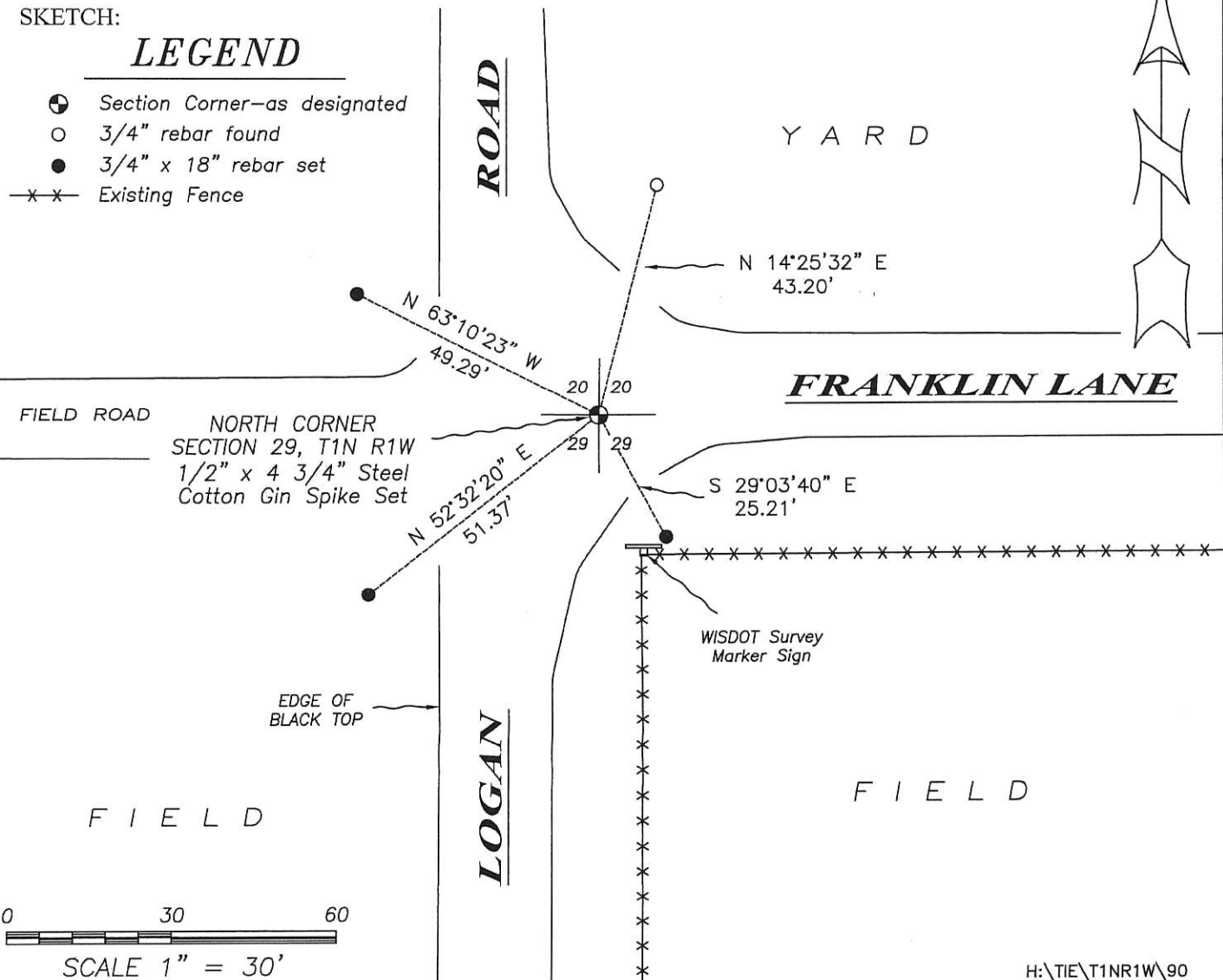
DESCRIPTION OF CORNER AND WITNESS MONUMENTS, references and accessories used to perpetuate the original or re-established location of this corner. (c) (d) (e)

Witnesses to corner location Shane Austin.

SKETCH:

## LEGEND

- ⊙ Section Corner—as designated
- 3/4" rebar found
- 3/4" x 18" rebar set
- x-x- Existing Fence



# U.S. PUBLIC LAND SURVEY MONUMENT RECORD - GRANT COUNTY, WI

Section 29, Town 1 North Range 1 West, Town of Hazel Green (a)

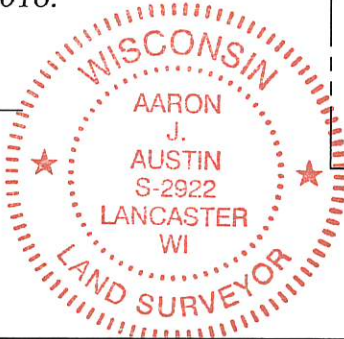
NOTE: This form is intended and designed to fulfill all requirements of the Wisconsin Administrative Code Chapter A-E 7.08, U.S. Public Land Survey Monument Record (3) (a) (b) (c) (d) (e) (f) (g) (h) (i).

**CERTIFICATE:** (i)

I, Aaron J. Austin, Wisconsin Professional Land Surveyor, do hereby certify that the corner location on this record was determined by me and/or under my direct supervision and that this U.S. Public Land Survey Monument Record is correct and complete to the best of my knowledge and belief.

Dated this 19th day of December, 2016.

*Aaron J. Austin*  
Aaron J. Austin, S-2922



☉ = CORNER LOCATION

Grant County Coordinates:  
NAD 83 (2011)  
Northing: 410,287.02  
Easting: 872,007.93

HISTORY OF CORNER ESTABLISHMENT:

1832-Lucius Lyon set the original corner.  
1996-E. Curtis Crook reset the corner and filed a Survey Monument Record.

DESCRIPTION OF CORNER EVIDENCE FOUND: (b) (f) (g) (h)

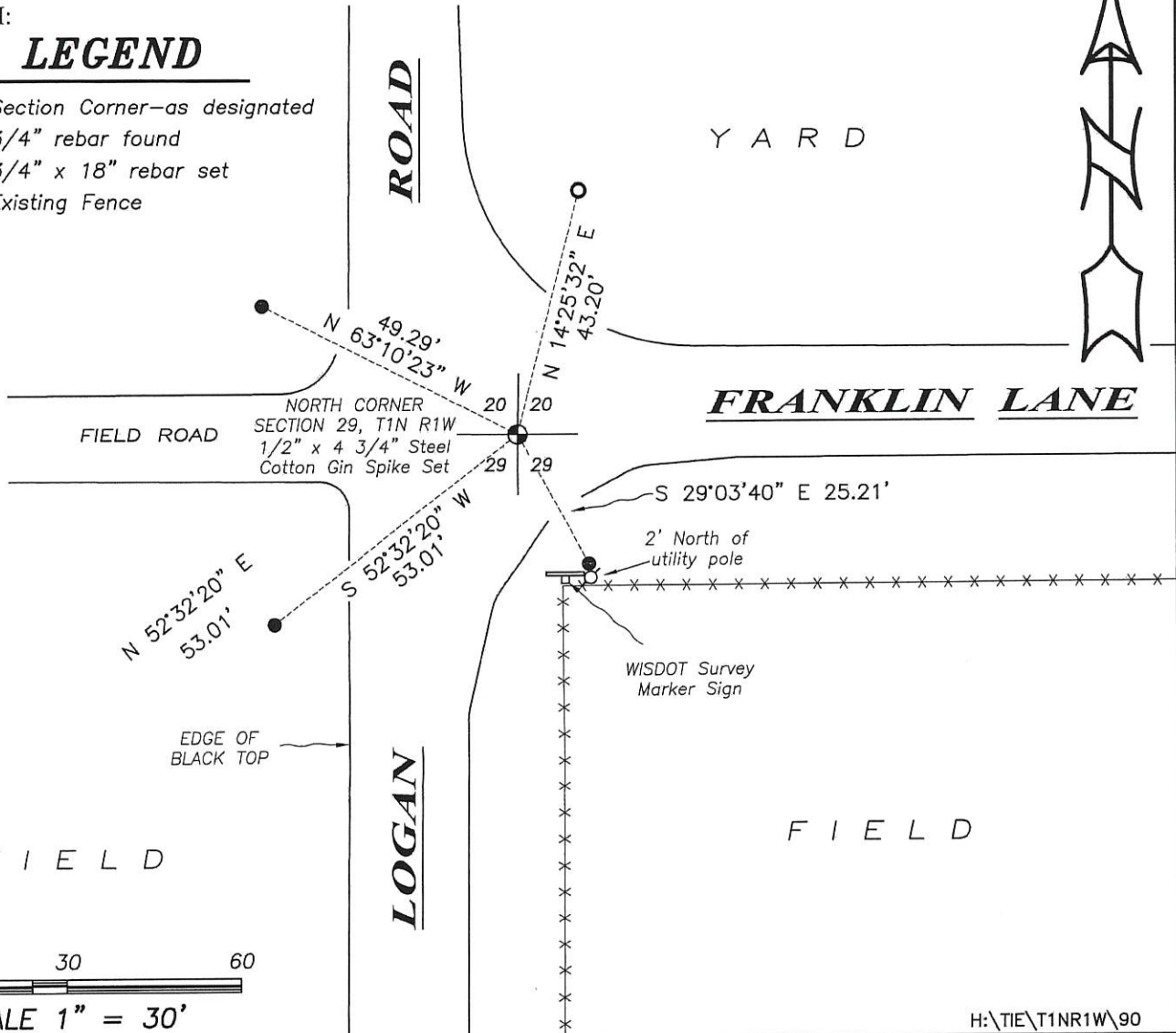
I reset the corner at the projection of the South 1/4 corner of Section 29 through the Center of Section 29 at the recorded distance of 5,288.16 feet from E. Curtis Crook. This coincides with one witness corner found. I set three additional witness corners after I verified the corner's location. County Coordinates were established using WISCORS (NAD 83) 2011 and G.P.S. observations.

DESCRIPTION OF CORNER AND WITNESS MONUMENTS, references and accessories used to perpetuate the original or re-established location of this corner. (c) (d) (e)  
Witnesses to corner location Shane Austin.

SKETCH:

## LEGEND

- ☉ Section Corner—as designated
- 3/4" rebar found
- 3/4" x 18" rebar set
- x-x- Existing Fence



SCALE 1" = 30'

# U. S. PUBLIC LAND SURVEY MONUMENT RECORD

**INSTRUCTIONS :** This record shall show the location of the corner and shall include all of the following nine elements (a through i).

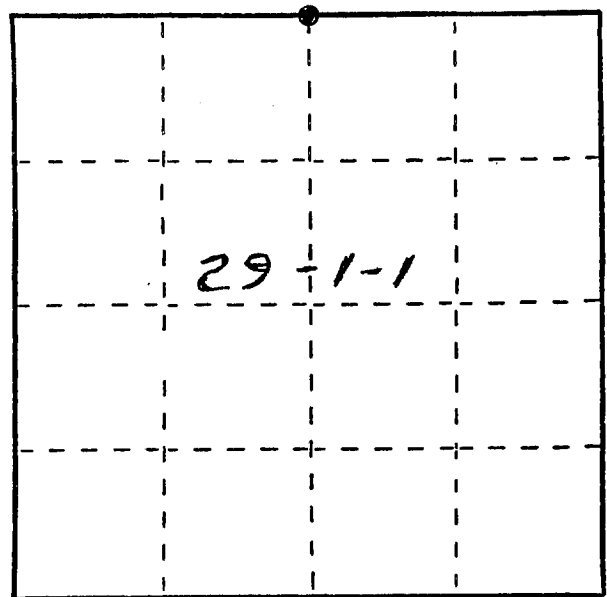
- (a) Identify the corner by reference to the U.S. public land survey system.  
 ● = Corner monument restored.

N1/4 Corner of Section

T1N R1W

Town of HAZEL GREEN

Grant County, Wi.



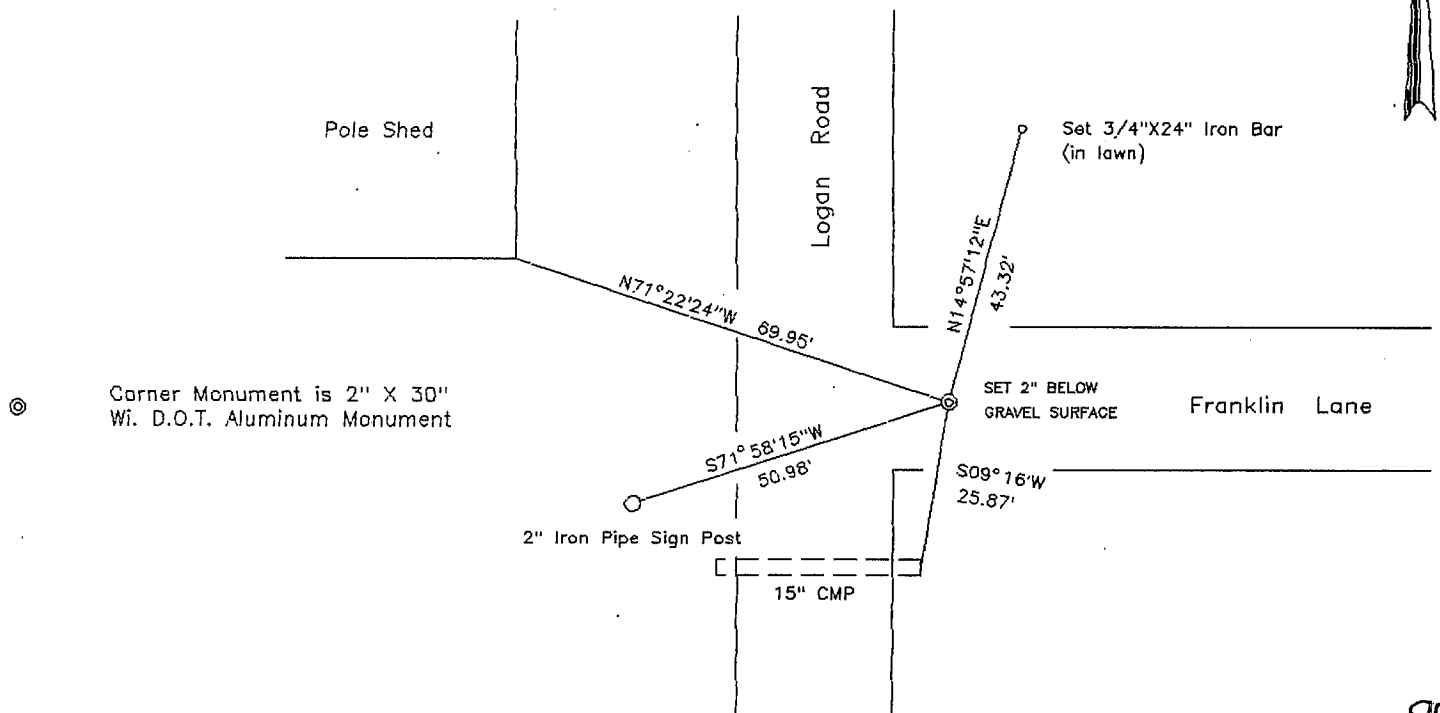
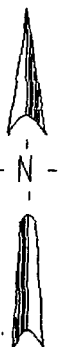
- (b) Describe any record evidence, monument evidence, occupational evidence, testimonial evidence or any other material evidence you considered, and whether the monument was found or placed.

Original corner set by Lucius Lyon in 1832. Found no evidence of various re-surveys recorded between 1844 and 1879, the last calling a stone in a mound of dirt. This and the 40 corner to the East have been destroyed by road construction; did not find the 40 corner stone to the West, possibly replaced with a corner fence post. These would have been set by different surveyors, which would lessen the value for pro-rating. A survey by Mike McMillin in 1977 is of little value— nothing set for this corner, and found no irons at the fence corners around the survey (survey was 204.5' X 400', the nearest being at an angle, 1145' away). A traverse along the North line produced excellent results in the dimensions from this location and the adjacent occupied 40 lines and Section corners. Also fits line from West.

- (c) In the plan view drawing below, provide reference ties to at least 4 witness monuments, or, if the location is within a municipality, to at least 2 witness monuments. (Witness monuments shall be made of concrete, natural stone, iron or other equally durable material.) Describe witness monuments.

- (d) Show a plan view drawing depicting the relevant monuments and reference ties which is sufficient in detail to enable accurate relocation of the corner monument if the corner monument is disturbed. Indicate north.

Scale: 1" = 30'



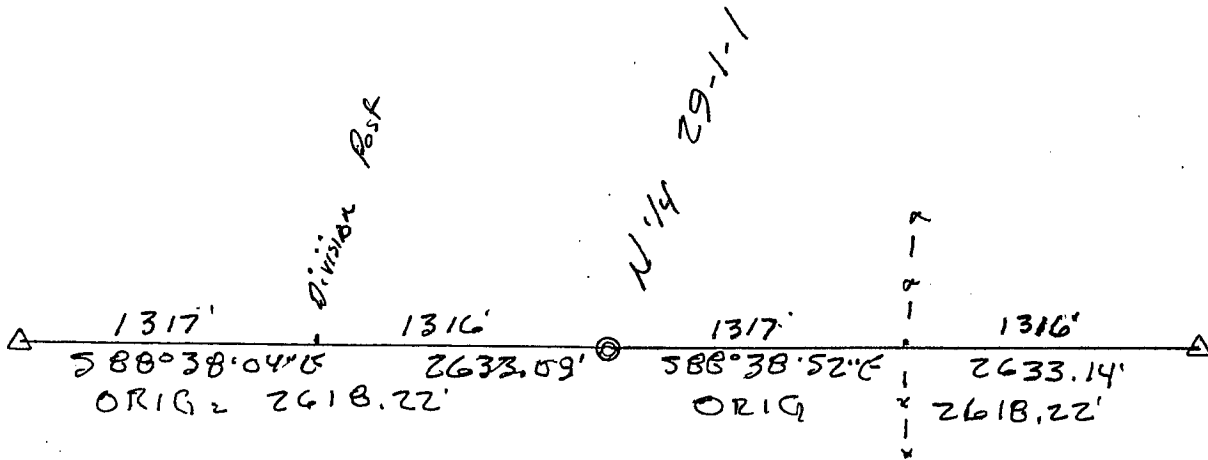
(e) Describe any material discrepancy between the location of the corner as restored or reestablished and the location of that corner as previously restored or reestablished by distance and direction. Show the discrepancy on the plan view drawing under (d), above. Show the distances between the corner as previously restored or reestablished and (1) the corner as restored or reestablished, and (2) to at least 2 of the witness monuments shown on the drawing in (d), above.

Not Applicable

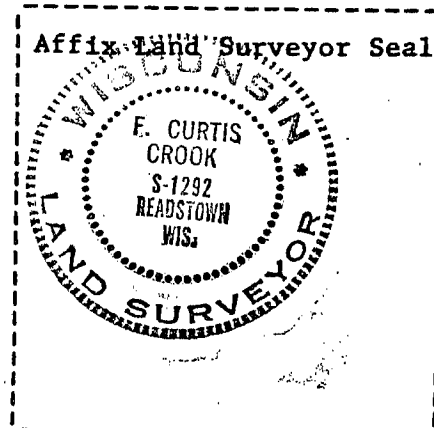
(f) Was the corner restored through acceptance of (1) an obliterated evidence location, or, (2) a found perpetuated location?

(1)

(g&h) Was the corner reestablished through lost corner proportionate methods? If so, show the method, including the directions and distances to other public land survey corners used as evidence or used for proportioning in determining the corner location?



Note: Difference in 2633.09 & 2633.14' is a result of Final Traverse Adjustment



(i) E. Curtis Crook  
 (type or print name) certify that the corner location shown on this record was determined by me or under my direction and control and that this U.S. Public Land Survey Monument Record is correct and complete to the best of my knowledge and belief.

E. Curtis Crook 1-10-96