

U.S. PUBLIC LAND SURVEY MONUMENT RECORD - GRANT COUNTY, WI

Section 29, Town 1 North Range 1 West, Town of Hazel Green (a)

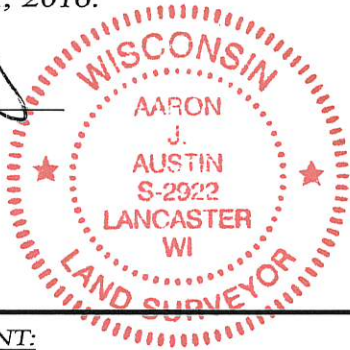
NOTE: This form is intended and designed to fulfill all requirements of the Wisconsin Administrative Code Chapter A-E 7.08, U.S. Public Land Survey Monument Record (3) (a) (b) (c) (d) (e) (f) (g) (h) (i).

CERTIFICATE: (i)

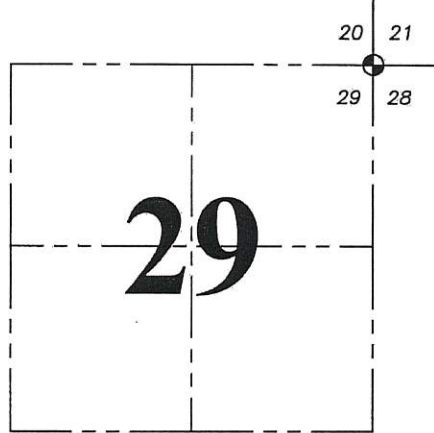
I, Aaron J. Austin, Wisconsin Professional Land Surveyor, do hereby certify that the corner location on this record was determined by me and/or under my direct supervision and that this U.S. Public Land Survey Monument Record is correct and complete to the best of my knowledge and belief.

Dated this 19th day of December, 2016.

Aaron J. Austin
 Aaron J. Austin, S-2922



Corner No. 089



⊙ = CORNER LOCATION

Grant County Coordinates:
 NAD 83 (2011)
 Northing: 410,250.12
 Easting: 874,640.81

HISTORY OF CORNER ESTABLISHMENT:

1832-Lucius Lyon set the original corner.
 1996-E. Curtis Crook reset the corner and filed a Survey Monument Record

DESCRIPTION OF CORNER EVIDENCE FOUND: (b) (f) (g) (h)

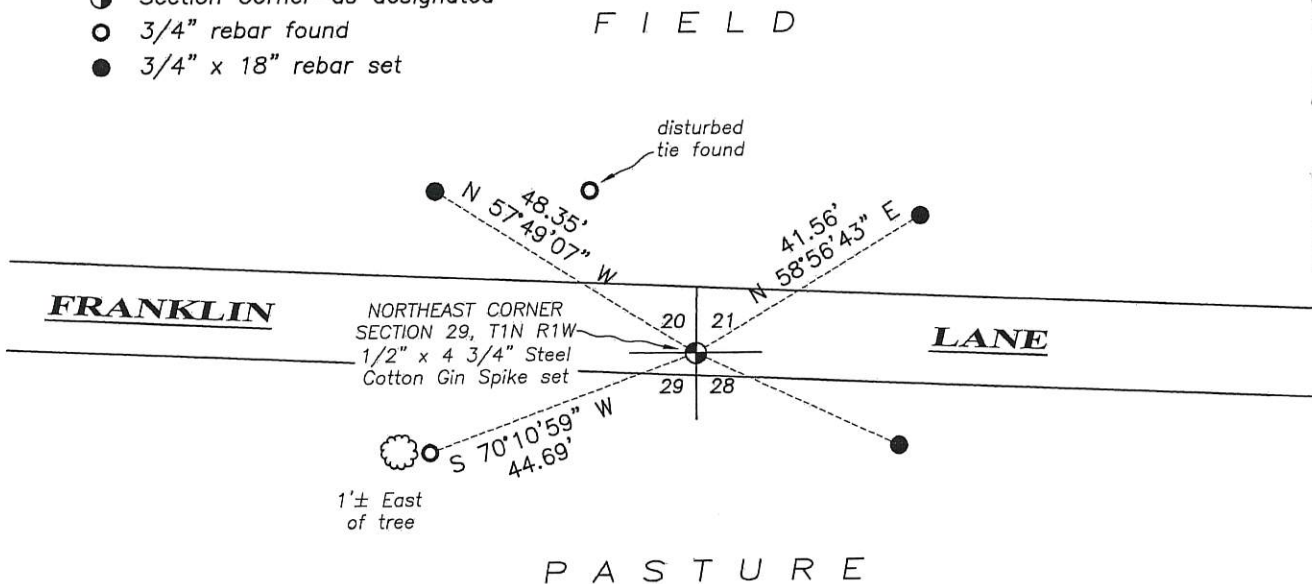
I found one witness corner and one disturbed witness corner. I reset the corner based upon the recorded distance of 2633.14 feet from the North 1/4 corner of Section 29 and the recorded distance of 2637.07 feet from the East 1/4 corner of Section 29. The recorded distances are provided from a Section Summary prepared by Crook dated 3-11-1996. This fit the one witness corner very well. I set 3 additional witness corners after I verified it's location. County Coordinates were established using WISCORS (NAD 83) 2011 and G.P.S. observations.

DESCRIPTION OF CORNER AND WITNESS MONUMENTS, references and accessories used to perpetuate the original or re-established location of this corner. (c) (d) (e)
 Witnesses to corner location Shane Austin, Aaron Austin.

SKETCH:

LEGEND

- ⊙ Section Corner—as designated
- 3/4" rebar found
- 3/4" x 18" rebar set



0 30 60

SCALE 1" = 30'

JAN 31 2018
11089

U.S. PUBLIC LAND SURVEY MONUMENT RECORD - GRANT COUNTY, WI

Section 29, Town 1 North Range 1 West, Town of Hazel Green (a)

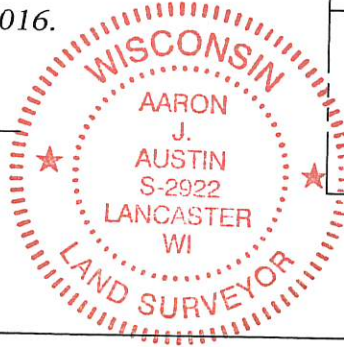
NOTE: This form is intended and designed to fulfill all requirements of the Wisconsin Administrative Code Chapter A-E 7.08, U.S. Public Land Survey Monument Record (3) (a) (b) (c) (d) (e) (f) (g) (h) (i).

CERTIFICATE: (i)

I, Aaron J. Austin, Wisconsin Professional Land Surveyor, do hereby certify that the corner location on this record was determined by me and/or under my direct supervision and that this U.S. Public Land Survey Monument Record is correct and complete to the best of my knowledge and belief.

Dated this 19th day of December, 2016.

Aaron J. Austin
Aaron J. Austin, S-2922



⊕ = CORNER LOCATION

HISTORY OF CORNER ESTABLISHMENT:

1832-Lucius Lyon set the original corner.
1875-McFall tied to the corner on a Survey filed in Book C, Page 261.
1996-F. Curtis Crook reset the corner and filed a Survey Monument Record.

DESCRIPTION OF CORNER EVIDENCE FOUND: (b) (f) (g) (h)

I found one witness corner as established by Crook. I reset the corner at the recorded distance of 2633.14' from the North 1/4 corner of Section 29 and the recorded distance of 2637.07' from the East 1/4 corner of Section 29. The recorded distances are from a section summary by F. Curtis Crook dated 3-11-1996. I set three additional witness corners.

DESCRIPTION OF CORNER AND WITNESS MONUMENTS, references and accessories used to perpetuate the original or re-established location of this corner. (c) (d) (e)
Witnesses to corner location Shane Austin, Aaron Austin.

SKETCH:

LEGEND

- ⊕ Section Corner—as designated
- 3/4" rebar found
- 3/4" x 18" rebar set

F I E L D

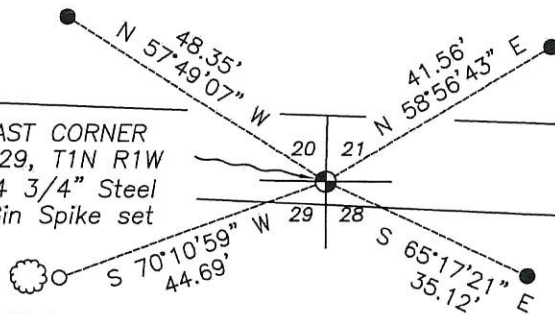


FRANKLIN

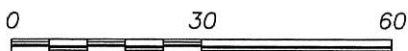
NORTHEAST CORNER
SECTION 29, T1N R1W
1/2" x 4 3/4" Steel
Cotton Gin Spike set

LANE

1'± East
of tree



P A S T U R E



SCALE 1" = 30'

U. S. PUBLIC LAND SURVEY MONUMENT RECORD

INSTRUCTIONS : This record shall show the location of the corner and shall include all of the following nine elements (a through i).

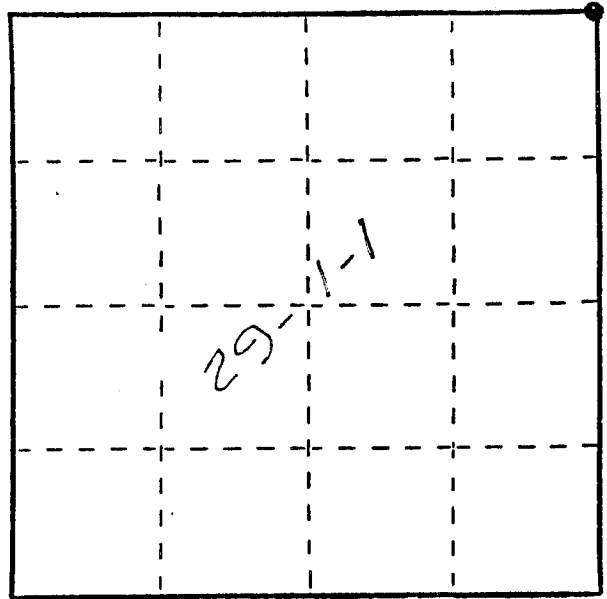
- (a) Identify the corner by reference to the U.S. public land survey system.
 ● = Corner monument restored.

NE Corner of Section 29

T1N R1W

Town of HAZEL GREEN

Grant County, WI.



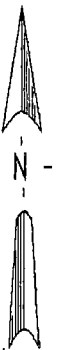
- (b) Describe any record evidence, monument evidence, occupational evidence, testimonial evidence or any other material evidence you considered, and whether the monument was found or placed.

Original corner set by Lucius Lyon in 1832. Although some resurveys were done in the mid to late 1800's, I found no evidence. Placed on the occupied North line of Section 28 extended West, at a recorded property line call of 295.9', it fits the measurements across the North line of Section 29 well. Although there is common ownership to the north, what now appears to be a field fence is perhaps a portion of a former line fence.

- (c) In the plan view drawing below, provide reference ties to at least 4 witness monuments, or, if the location is within a municipality, to at least 2 witness monuments. (Witness monuments shall be made of concrete, natural stone, iron or other equally durable material.)
 Describe witness monuments.

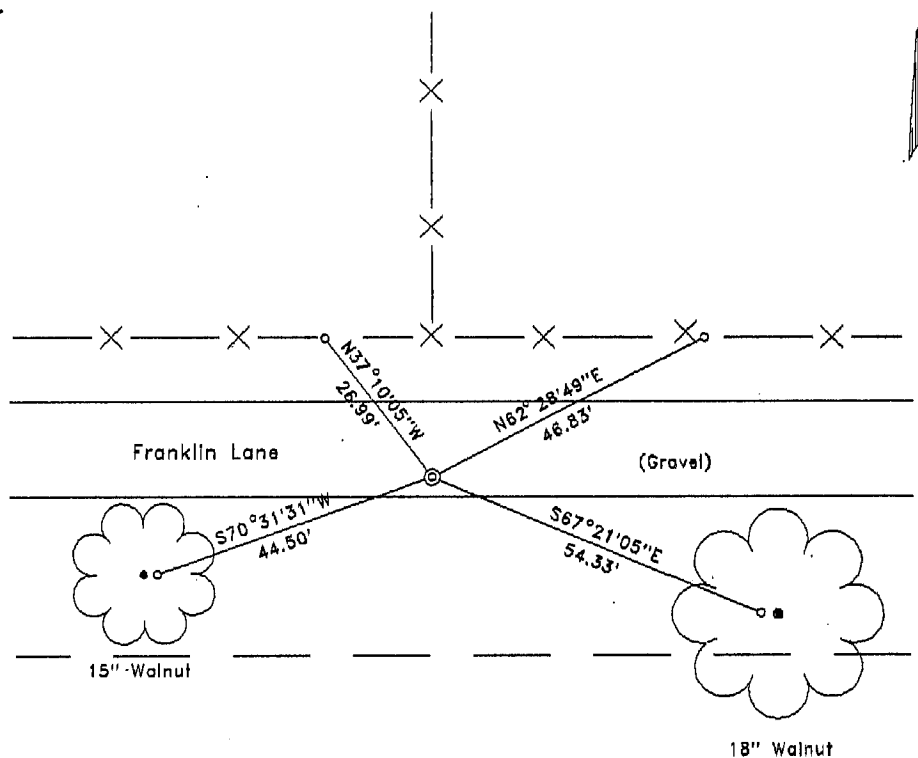
- (d) Show a plan view drawing depicting the relevant monuments and reference ties which is sufficient in detail to enable accurate relocation of the corner monument if the corner monument is disturbed. Indicate north.

Scale: 1" = 30'



⊙ Corner Monument is 2" X 30" WI. D.O.T. Aluminum Monument with sign and post

○ 3/4" X 30" Rebar set



(e) Describe any material discrepancy between the location of the corner as restored or reestablished and the location of that corner as previously restored or reestablished by distance and direction. Show the discrepancy on the plan view drawing under (d), above. Show the distances between the corner as previously restored or reestablished and (1) the corner as restored or reestablished, and (2) to at least 2 of the witness monuments shown on the drawing in (d), above.

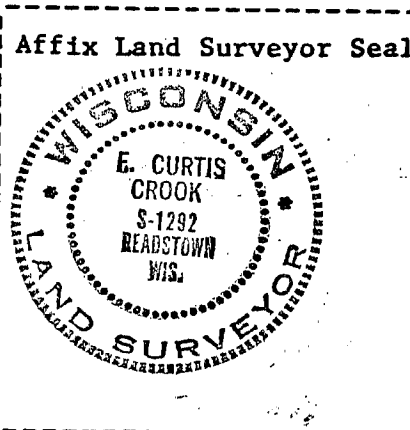
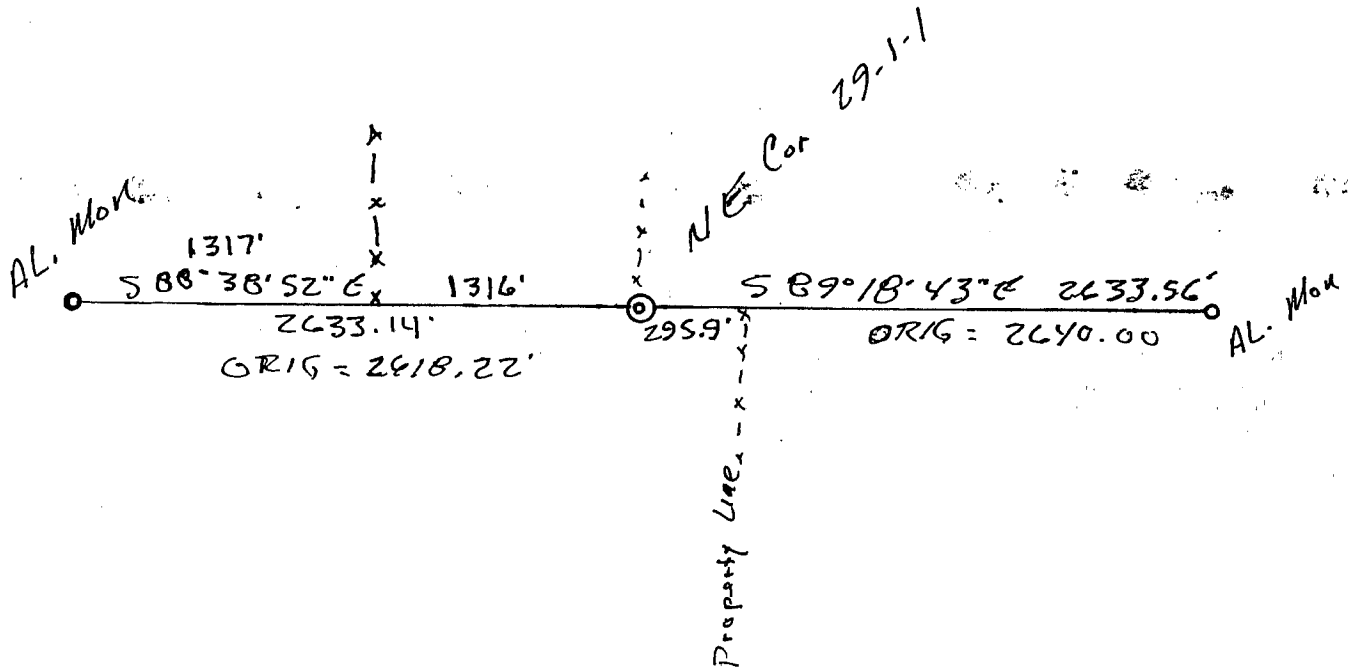
None

(f) Was the corner restored through acceptance of (1) an obliterated evidence location, or, (2) a found perpetuated location?

(1)

(g&h) Was the corner reestablished through lost corner proportionate methods? If so, show the method, including the directions and distances to other public land survey corners used as evidence or used for proportioning in determining the corner location?

No



(i) E. Curtis Crook
 (type or print name) certify that the corner location shown on this record was determined by me or under my direction and control and that this U.S. Public Land Survey Monument Record is correct and complete to the best of my knowledge and belief.
E. Curtis Crook 1-15-96