

U.S. PUBLIC LAND SURVEY MONUMENT RECORD - GRANT COUNTY, WI

Section 25, Town 1 North Range 1 West, Town of Hazel Green (a)

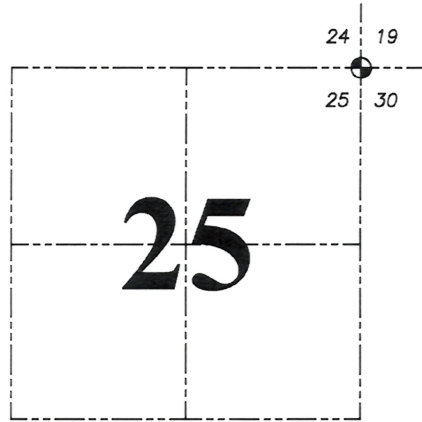
NOTE: This form is intended and designed to fulfill all requirements of the Wisconsin Administrative Code Chapter A-E 7.08, U.S. Public Land Survey Monument Record (3) (a) (b) (c) (d) (e) (f) (g) (h) (i).

CERTIFICATE: (i)

I, Aaron J. Austin, Wisconsin Professional Land Surveyor, do hereby certify that the corner location on this record was determined by me and/or under my direct supervision and that this U.S. Public Land Survey Monument Record is correct and complete to the best of my knowledge and belief.

Dated this 9th day of October, 2024.

Aaron J. Austin, S-2922



⊕ = CORNER LOCATION

Grant County Coordinates:  
NAD 83 (2011)  
Northing: 410,272.90  
Easting: 895,747.46

HISTORY OF CORNER ESTABLISHMENT:

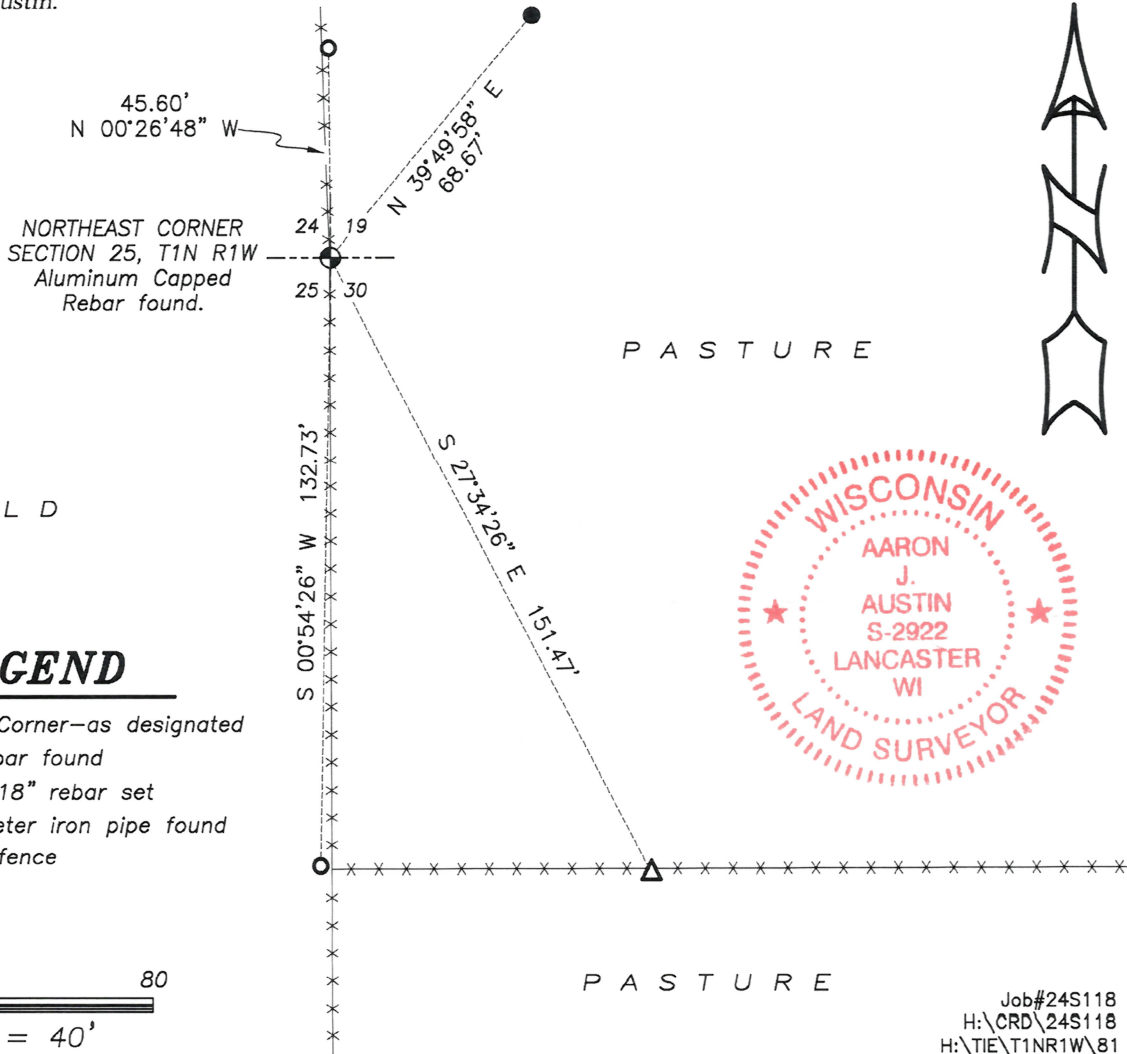
Original corner was set in 1832 by Lucius Lyon.  
Carl B. Schoenhard Jr. Showed an existing Pipe on a Plat of Survey dated 3-30-1983.  
Bruce Bowden replaced a 2" Pipe with an Aluminum Monument and prepared a Survey Monument Record dated 5-10-1985.  
Larry Austin set a 1 1/2" Pipe and prepared a Survey Monument Record dated 6-12-1990.  
Bruce Bowden set a 7/8" Rebar with a Aluminum Cap inside a 1 1/2" Iron Pipe and prepared a Survey Monument Record that was not dated.  
Ryland Benzing set a 7/8" Rebar with a Aluminum Cap (inside a pipe) and prepared a Survey Monument Record dated 12-4-2018.

DESCRIPTION OF CORNER EVIDENCE FOUND: (b) (f) (g) (h)

I found an Aluminum Capped Rebar and three witness corners. I set one additional witness corner after I verified the Monument's location with G.P.S. and E.D.M. methods.

DESCRIPTION OF CORNER AND WITNESS MONUMENTS, references and accessories used to perpetuate the original or re-established location of this corner. (c) (d) (e)  
Witnesses to corner location Owen Austin, Tanner Austin.  
Drawn by: Owen Austin.

SKETCH:



LEGEND

- ⊕ Section Corner—as designated
- 3/4" rebar found
- 3/4" x 18" rebar set
- △ 1" diameter iron pipe found
- x-x-x- Existing fence



Hazel Green

Paper weight - 32# 25% Rag Ledger (minimum)

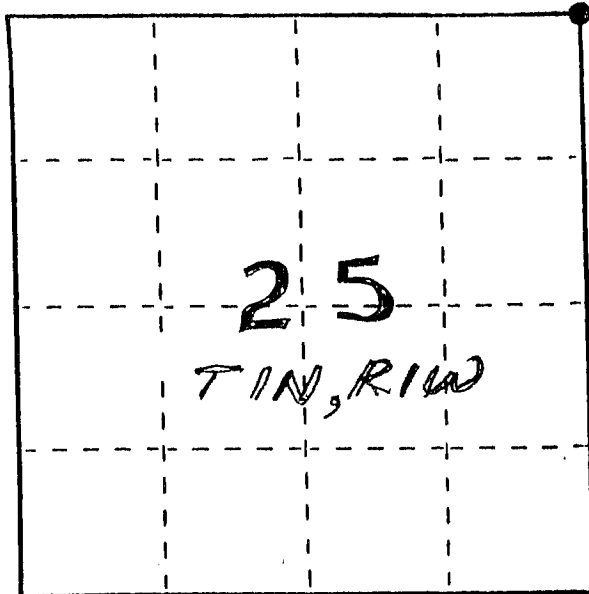
# U. S. PUBLIC LAND SURVEY MONUMENT RECORD

**INSTRUCTIONS:** This record shall show the location of the corner and shall include all of the following nine elements (a through i).

(a) Identify the corner by reference to the U.S. public land survey system.

● = Corner monument restored.

NE CORNER - SEC. 25  
T1N, R1W, HAZEL GREEN  
TWP., GRANT CO., WI



(b) Describe any record evidence, monument evidence, occupational evidence, testimonial evidence or any other material evidence you considered, and whether the monument was found or placed.

MONUMENT WAS PLACED BASED ON ORAL TESTIMONY,  
EXISTING FIELD EVIDENCE & VERIFIED BY EDM  
TRAVERSE;

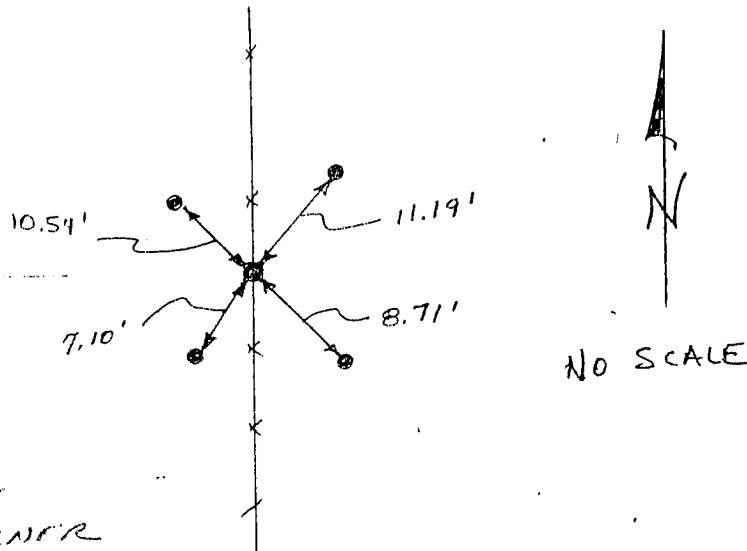
*Found 5/1/90*

(c) In the plan view drawing below, provide reference ties to at least 4 witness monuments, or, if the location is within a municipality, to at least 2 witness monuments. (Witness monuments shall be made of concrete, natural stone, iron or other equally durable material, ~~except~~ wood.) Describe witness monuments.

(d) Show a plan view drawing depicting the relevant monuments and reference ties which is sufficient in detail to enable accurate relocation of the corner monument if the corner monument is disturbed. Indicate north.

GRANT COUNTY CLERK  
**RECEIVED**

FENCE REMNANTS FOUND



NO SCALE

SEP 20 1990

● = 1/2" x 24" IRON PIPE  
PLACED = SEC. CORNER

○ = 3/8" x 10" STEEL PEG  
SET IN GROUND = TIE

x x EXISTING FENCES

P. 81

... the corner as restored or reestablished, and (2) to at least 2 of the witness monuments shown on the drawing in (d), above.

NONE

(f) Was the corner restored through acceptance of (1) an obliterated evidence location, or, (2) a found perpetuated location?

A FOUND PERPETUATED LOCATION

(g&h) Was the corner reestablished through lost corner proportionate methods? If so, show the method, including the directions and distances to other public land survey corners used as evidence or used for proportioning in determining the corner location?

No

(1) I, LARRY L. AUSTIN  
(type or print name) certify that the corner location shown on this record was determined by me or under my direction and control and that this U.S. Public Land Survey Monument Record is correct and complete to the best of my knowledge and belief.

Larry L. Austin  
Signature

6-12-90  
Date

