

11079

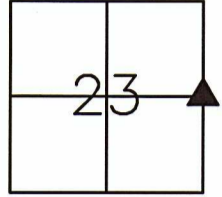
UNITED STATES PUBLIC LAND SURVEY MONUMENT RECORD
GRANT COUNTY, WISCONSIN
SECTION 23, TOWNSHIP 1 NORTH, RANGE 1 WEST OF THE 4TH P.M.

HISTORY OF CORNER:

ORIGINAL CORNER SET IN 1832 BY LUCIUS LYON. IN 1996, BRUCE BOWDEN PLACED A GRANT COUNTY ALUMINUM MONUMENT AT LOCATION.

DESCRIPTION OF CORNER AND EVIDENCE FOUND:

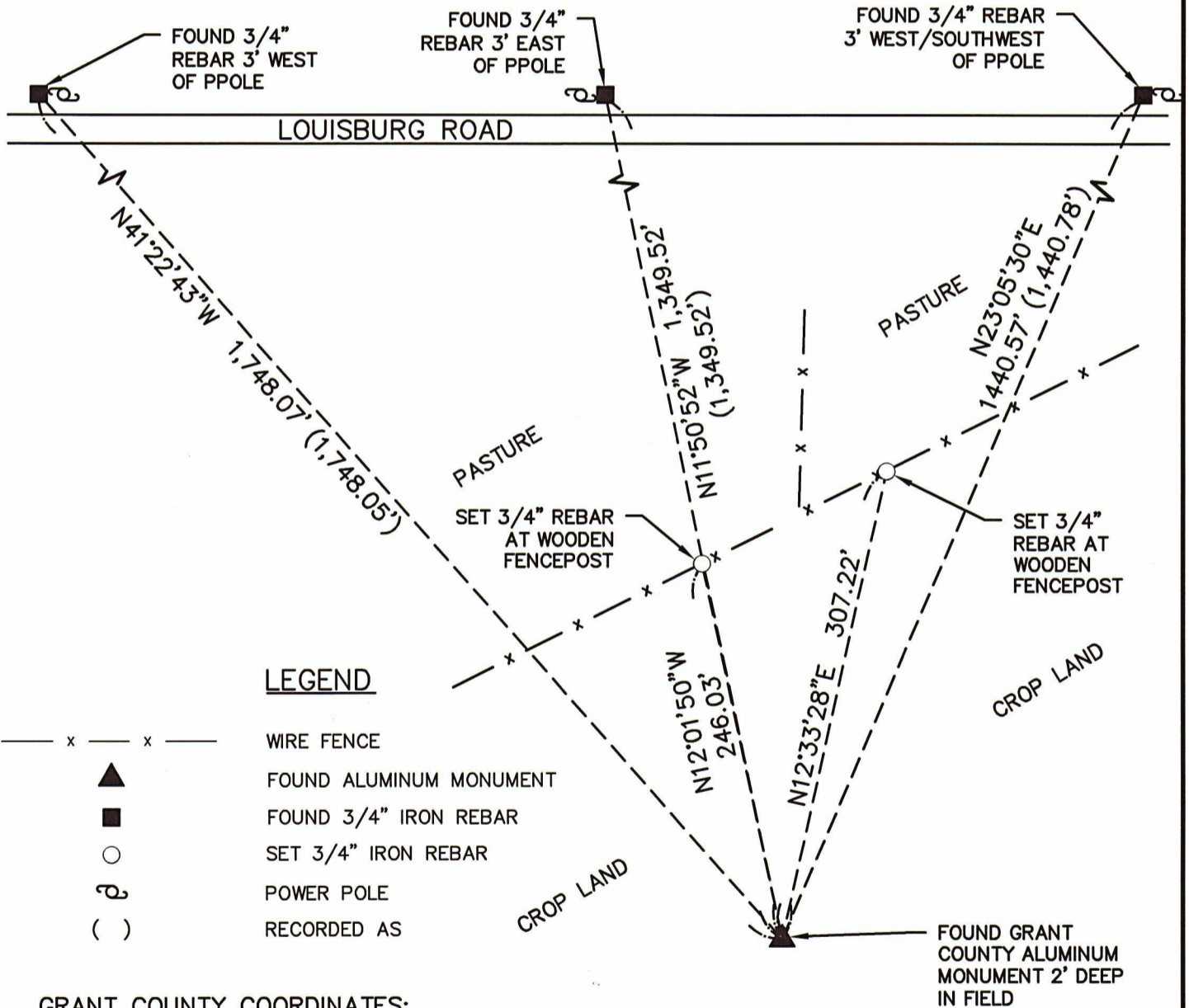
FOUND ALUMINUM MONUMENT AT LOCATION. FOUND THREE TIES PER BOWDEN CORNER CERTIFICATE. ACCEPTED CORNER AND PLACED NEW SWING TIES AS SHOWN BELOW.



EAST 1/4 CORNER
SEC 23, T1N, R1W
TOWN OF HAZEL GREEN
CORNER NUMBER 79



PLAN - VIEW



LEGEND

- x — x — WIRE FENCE
- ▲ FOUND ALUMINUM MONUMENT
- FOUND 3/4" IRON REBAR
- SET 3/4" IRON REBAR
- Ⓟ POWER POLE
- () RECORDED AS

GRANT COUNTY COORDINATES:
NORTHING: 412917.60
EASTING: 890481.83



I, Craig L. Geiser certify that the corner location shown on this record was determined by me or under my direction and control and that this U.S. Public Land Survey Monument Record is correct and complete to the best of my knowledge and belief.

Craig L. Geiser
Signature Date 4.30.21

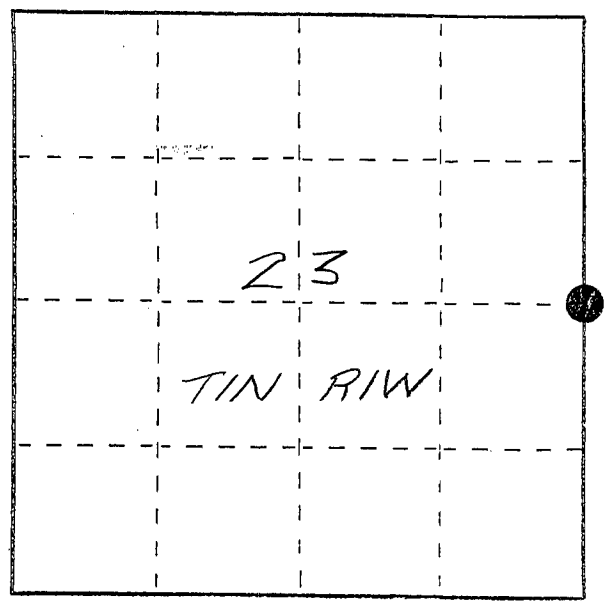
 IIW, P.C. INTEGRITY. EXPERTISE. SOLUTIONS www.iwengr.com • 800.556.4491		ARCHITECTURE CIVIL ENGINEERING CONSTRUCTION SERVICES ENVIRONMENTAL ENGINEERING LAND SURVEYING MUNICIPAL ENGINEERING STRUCTURAL ENGINEERING TRANSPORTATION ENGINEERING	
DRAWN	JJB	PLAT NO.	1-WI-21
CHECKED	CLG	PROJ. NO.	21708
DATE	4-30-21	SHEET	1 of 1
P:\21\700\708\DRAWINGS\SURVEY\21708 TIESHEETS			

U. S. PUBLIC LAND SURVEY MONUMENT RECORD

INSTRUCTIONS: This record shall show the location of the corner and shall include all of the following nine elements (a through i).

- (a) Identify the corner by reference to the U.S. public land survey system.
- = Corner monument restored.

The East Quarter Corner of Section 23, Town 1 North, Range 1 West, Hazel Green Township, Grant County, Wisconsin.



GRANT COUNTY COORDINATES

X - 890481.85
Y - 412917.59

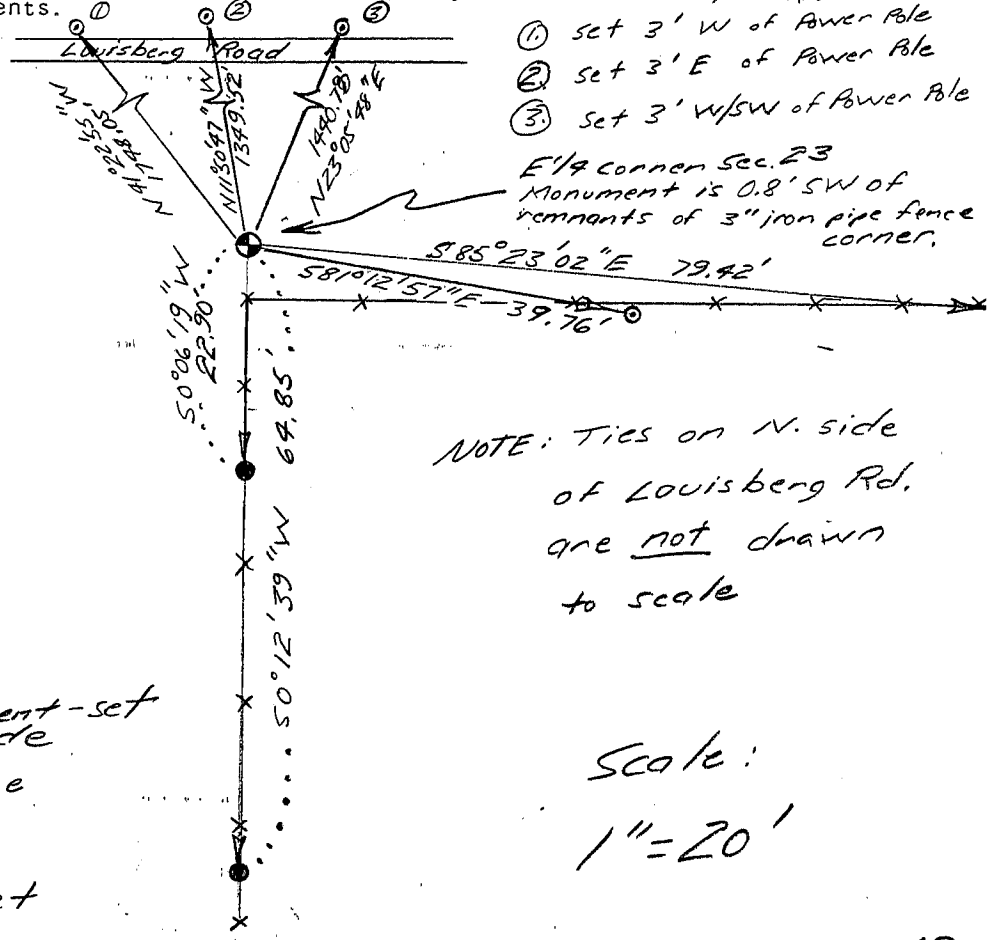
LAT. 42°32'37.0742 "N
LONG. 90°26'44.5620 "W

- (b) Describe any record evidence, monument evidence, occupational evidence, testimonial evidence or any other material evidence you considered, and whether the monument was found or placed.

1" x 24" iron pipe monument shown on previous U.S. Public Land Survey Monument Record is missing. The two 1" iron pipe ties to the East are also gone. The two 1" iron pipe ties to the south were found in good condition. The corner was replaced with reference to remaining ties. Replacement ties have also been set.

- (c) In the plan view drawing below, provide reference ties to at least 4 witness monuments, or, if the location is within a municipality, to at least 2 witness monuments. (Witness monuments shall be made of concrete, natural stone, iron or other equally durable material, ~~except~~ wood.) Describe witness monuments.

- (d) Show a plan view drawing depicting the relevant monuments and reference ties which is sufficient in detail to enable accurate relocation of the corner monument if the corner monument is disturbed. Indicate north.



- ① set 3' W of Power Pole
- ② set 3' E of Power Pole
- ③ set 3' W/SW of Power Pole

E/4 Corner Sec. 23 Monument is 0.8' SW of remnants of 3" iron pipe fence corner.

NOTE: Ties on N. side of Louisberg Rd. are not drawn to scale

Legend

- Berntsen Driveway Aluminum Monument - set 18" below grade
- Existing 1" Iron Pipe
- No. 6 x 24" Rebar - Set

Scale:
1" = 20'

(e) Describe any material discrepancy between the location of the corner as restored or reestablished and the location of that corner as previously restored or reestablished by distance and direction. Show the discrepancy on the plan view drawing under (d), above. Show the distances between the corner as previously restored or reestablished and (1) the corner as restored or reestablished, and (2) to at least 2 of the witness monuments shown on the drawing in (d), above.

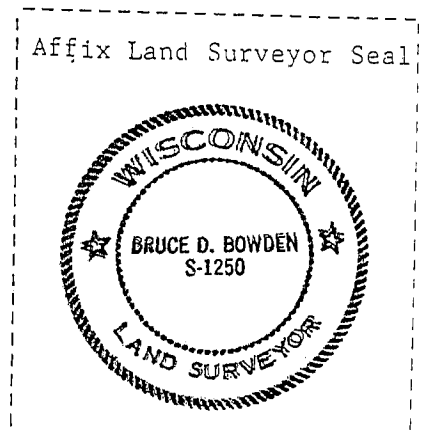
None.

(f) Was the corner restored through acceptance of (1) an obliterated evidence location, or, (2) a found perpetuated location?

(2) A found perpetuated location.

(g&h) Was the corner reestablished through lost corner proportionate methods? If so, show the method, including the directions and distances to other public land survey corners used as evidence or used for proportioning in determining the corner location?

No.



(i) I, BRUCE D. BOWDEN,

(type or print name) certify that the corner location shown on this record was determined by me or under my direction and control and that this U.S. Public Land Survey Monument Record is correct and complete to the best of my knowledge and belief.

Bruce D. Bowden
Signature

May 22, 1996
Date

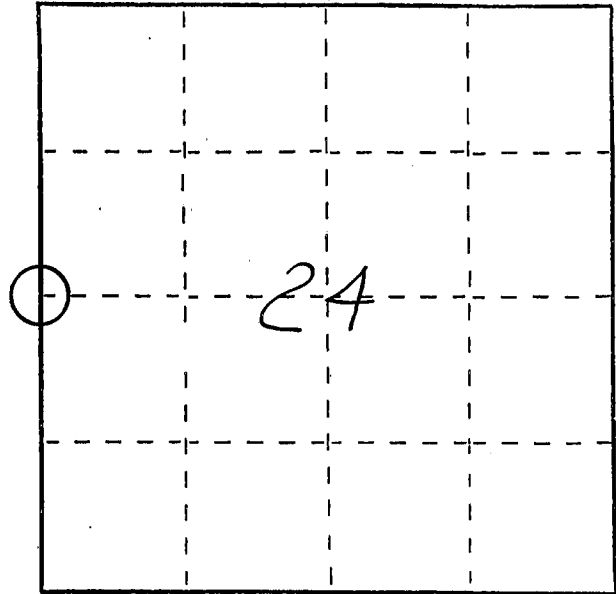
U. S. PUBLIC LAND SURVEY MONUMENT RECORD

OCT 30 1961

INSTRUCTIONS: This record shall show the location of the corner and shall include all of the following nine elements (a through i).

- (a) Identify the corner by reference to the U.S. public land survey system.
- = Corner monument restored.

**WEST 1/4 CORNER
SECTION 24
TOWN 1 NORTH
RANGE 1 WEST
HAZEL GREEN TOWNSHIP
GRANT CO., WISCONSIN**



- (b) Describe any record evidence, monument evidence, occupational evidence, testimonial evidence or any other material evidence you considered, and whether the monument was found or placed.

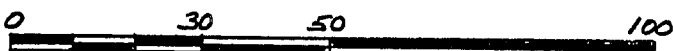
MONUMENT SET FROM EXISTING PHYSICAL EVIDENCE OF FENCES AFTER VERIFICATION BY PROPORTIONATE MEASUREMENTS FROM AN EDM TRAVERSE OF THE AREA.

- (c) In the plan view drawing below, provide reference ties to at least 4 witness monuments, or, if the location is within a municipality, to at least 2 witness monuments. (Witness monuments shall be made of concrete, natural stone, iron or other equally durable material, ~~except~~ ~~wood~~.) Describe witness monuments.

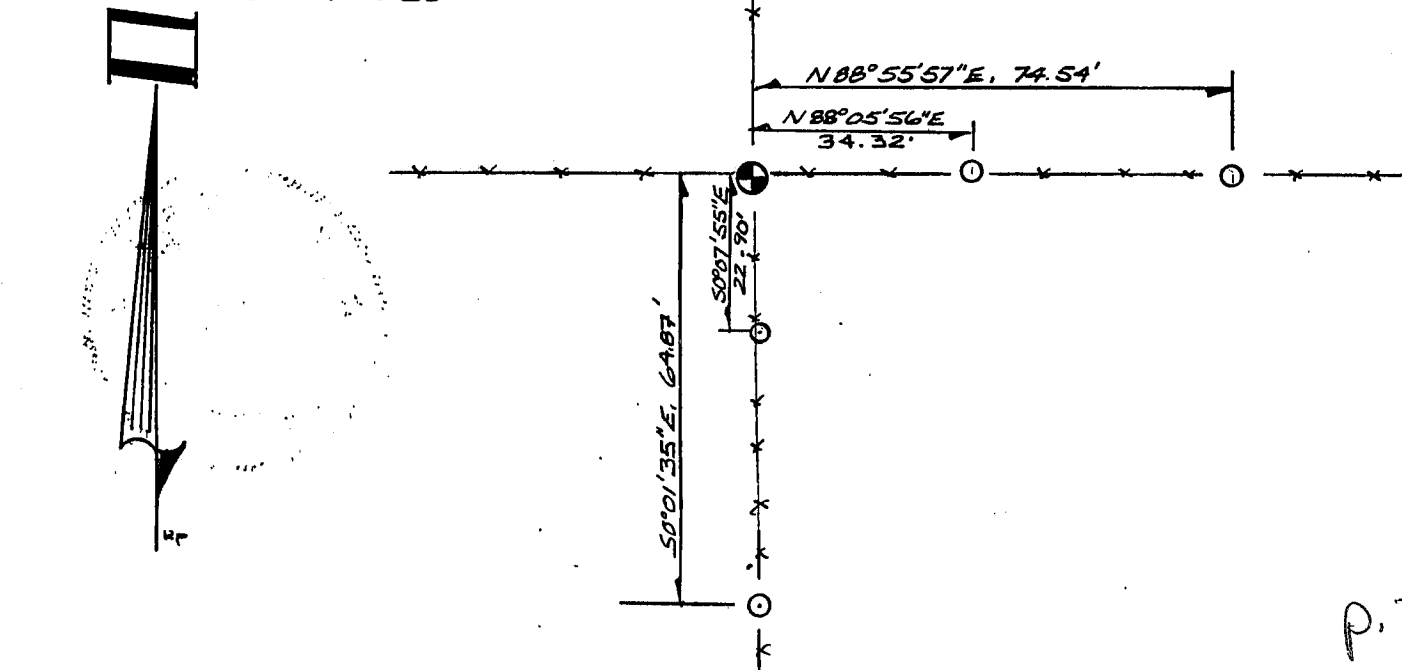
- (d) Show a plan view drawing depicting the monument and reference ties which is sufficient in detail to enable accurate relocation of the corner monument if the corner monument is disturbed. Indicate north.

LEGEND

- ⊕ 1" x 24" IRON PIPE SET @ W 1/4 COR. OF 24-1N-1W
- 1" IRON PIPE SET
- *** FENCE



SCALE: 1" = 30'



(e) Describe any material discrepancy between the location of the corner as restored or reestablished and the location of that corner as previously restored or reestablished by distance and direction. Show the discrepancy on the plan view drawing under (d), above. Show the distances between the corner as previously restored or reestablished and (1) the corner as restored or reestablished, and (2) to at least 2 of the witness monuments shown on the drawing in (d), above.

NONE

(f) Was the corner restored through acceptance of (1) an obliterated evidence location, or, (2) a found perpetuated location?

(2) A FOUND PERPETUATED LOCATION

(g&h) Was the corner reestablished through lost corner proportionate methods? If so, show the method, including the directions and distances to other public land survey corners used as evidence or used for proportioning in determining the corner location?

No.

(i) I, BRUCE D. BOWDEN
(type or print name) certify that the corner location shown on this record was determined by me or under my direction and control and that this U.S. Public Land Survey Monument Record is correct and complete to the best of my knowledge and belief.

Bruce D. Bowden
Signature

JUNE 10, 1991
Date

