

Grant County Certified U.S. Public Land Survey Monument Record

DATUM : NAD83 (2011) WISCONSIN

GRANT COUNTY COORDINATES

CONTROL IS A COMBINATION OF GPS AND CONVENTIONAL FIELD CONTROL.

NORTH 412916.23

EAST 893131.52

The center section corner of Section 24,
Town 1 North, Range 1 West, Village of
Hazel Green, Grant County, Wisconsin.

(A) Identify the corner by
reference to the U.S.
public land survey system.

WITNESS TO CORNER LOCATION:



(E) The corner was restored
through acceptance of
(1) an obliterated
evidence location
(2) a found perpetuated
location
(3) lost corner proportionate
methods



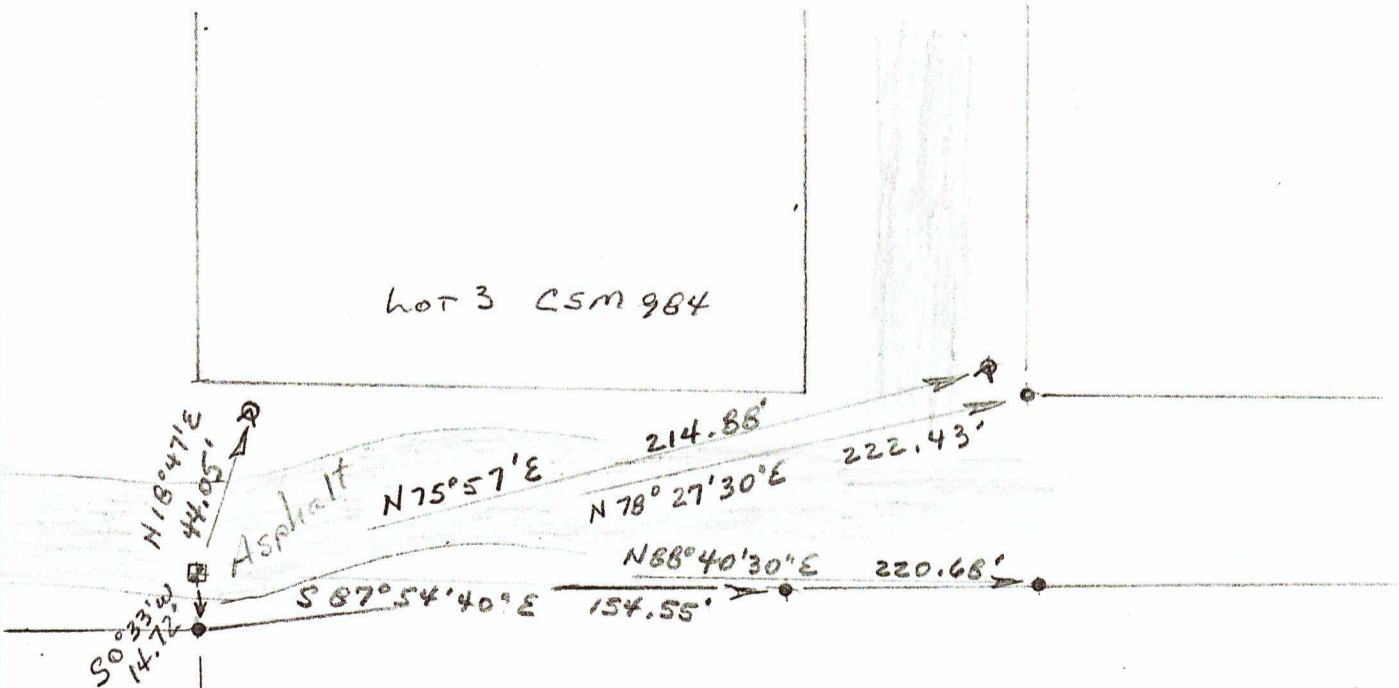
= Corner monument restored
or maintained.

Sec. 24, T 1 N, R 1 W

(B) Describe any record evidence, monument evidence, occupational evidence, testimonial evidence
or any other material evidence you considered, and whether the monument was placed or found.

#10 (1 1/4" dia.) x 24" rebar set at the location shown on the survey by me on
May 8, 1991, and CSM No. 984 by Keith Dalsing in 2003.

(C, D, F, G) Plan view drawing below, provide reference ties to at least 4 witness monuments, or, if the location is within
a municipality, to at least 2 witness monuments. Depict the relevant monuments and reference ties in sufficient detail to
enable accurate relocation of the corner monument, if disturbed. Indicate North. Describe any material discrepancy between
the location of the corner as restored or reestablished and the location of that corner as previously monumented by distance
and direction. Show the discrepancy on the plan view and the distances between the corner as previously monumented.
If the corner was reestablished through lost corner proportionate methods, show the method, including the directions and
distances to other public land survey corners used for proportioning in determining the corner location.



LEGEND

■ 1 1/4" x 24" Rebar

● #6 Rebar Found

▲ 1" Pipe Found

Recorded As

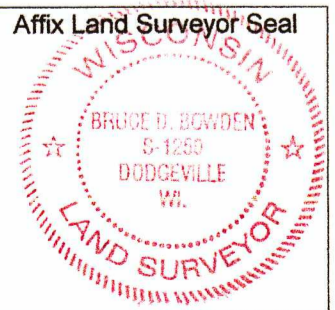
⊗ fire hydrant - top center

▲ S 0° 33' 17" W 966.65'

Scale : 1" = 50'

(H) I, Bruce D. Bowden do certify that the corner location shown
on this record was determined by me or under my direction and
control and that this U.S. Public Land Survey Monument Record
is correct and complete to the best of my knowledge and belief.

Bruce D. Bowden Jan 4, 2022
Signature Date



Romportl No. 42401012020
Grant Co. Index No. 79-A