

U.S. PUBLIC LAND SURVEY MONUMENT RECORD – GRANT COUNTY, WI

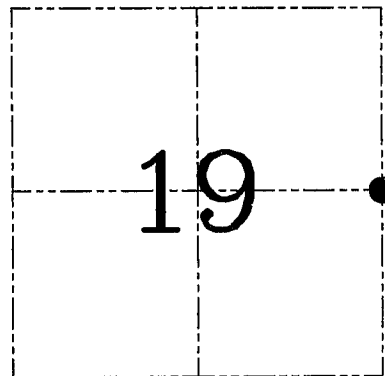
Section 19, Town 1 North Range 1 West, Town of Hazel Green

CERTIFICATE

I, Larry L. Austin, do hereby certify that the corner location on this record was determined by me and/or under my direct supervision and that this U.S. public land survey monument record is correct and complete to the best of my knowledge and belief.

Dated this 30th day of May, 2006

Larry L. Austin
 Larry L. Austin
 1903
 LANCASTER
 WI
LAND SURVEYOR



● = CORNER LOCATION

HISTORY OF CORNER ESTABLISHMENT

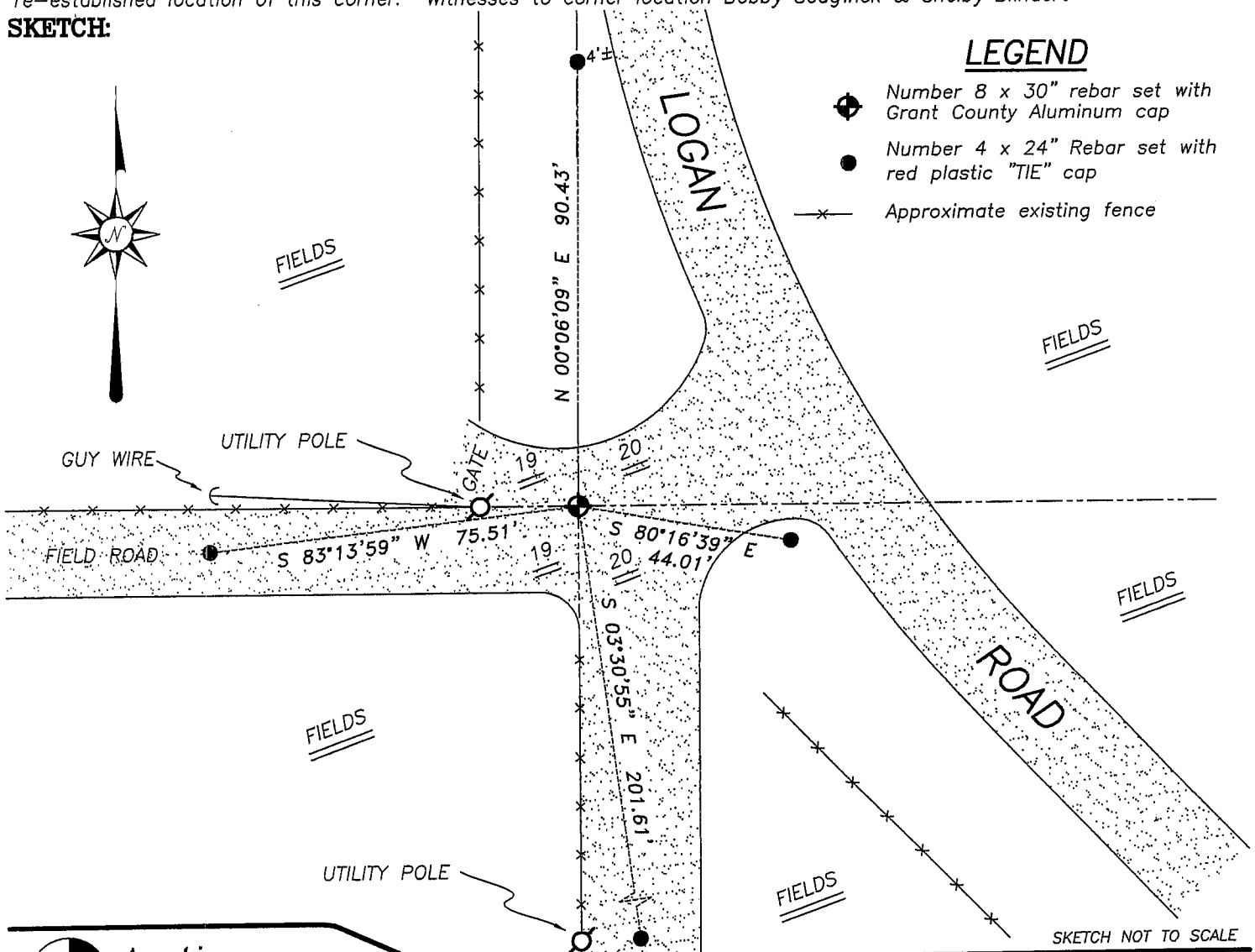
Corner was originally set in 1832 by Lyon. In 1852 Everett found the original corner. No recent record of the corner was found.

DESCRIPTION OF CORNER EVIDENCE FOUND

I reset the corner based on an occupied location. An existing fence West and South established this location. Verified this location using EDM & GPS methods.

DESCRIPTION OF CORNER AND WITNESS MONUMENTS, references and accessories used to perpetuate the original or re-established location of this corner. Witnesses to corner location Bobby Sedgwick & Shelby Blindert

SKETCH:



SKETCH NOT TO SCALE



Austin Engineering LLC

4211 HWY 81 E, LANCASTER, WI 53813
 PHONE 608-723-6363 FAX 608-723-6702

JOB NUMBER 06S078
 FIELDBOOK: TDSR, 2513
 G:\T1NR2W\23
 H:\TIE\T1NR1W\75

DRAWN BY: SW AUSTIN
 APPROVED: LL AUSTIN