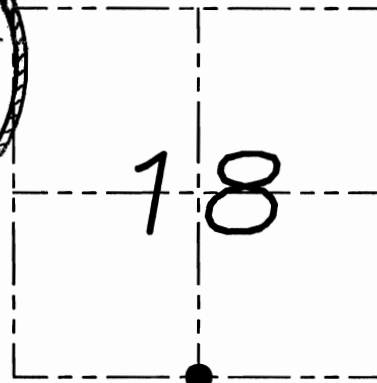


U.S. PUBLIC LAND SURVEY MONUMENT RECORD

Section 18, Town 1 North Range 1 West, Town of Hazel Green, Grant County, Wisconsin

CERTIFICATE

I, Larry L. Austin, do hereby certify that the corner location on this record was determined by me and/or under my direct supervision and that this U.S. public land survey monument record is correct and complete to the best of my knowledge and belief.



● = CORNER LOCATION

Larry L. Austin 6.8.09
 Larry L. Austin, S-1903 date

HISTORY OF CORNER

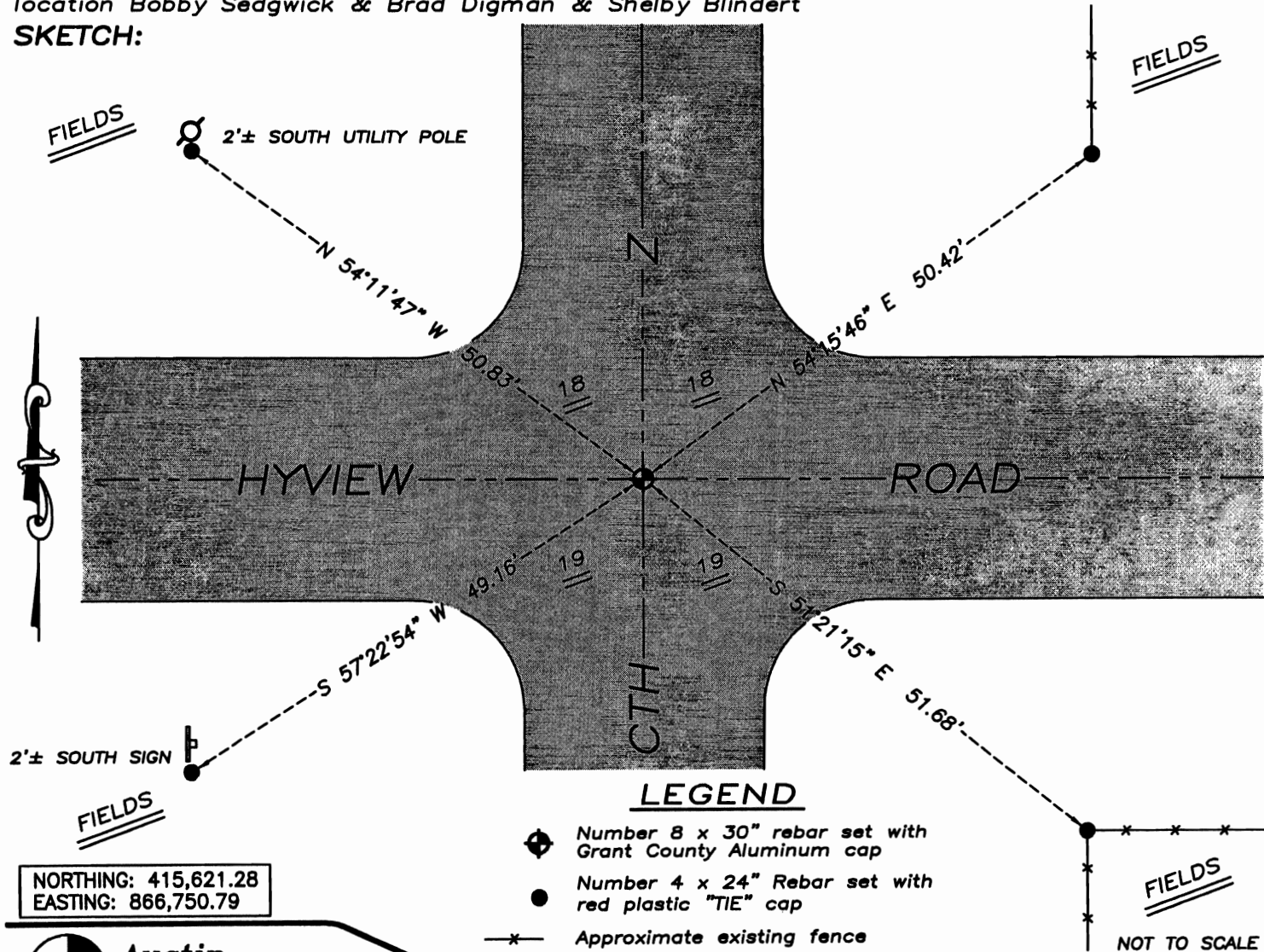
Corner was originally set in the 2nd quarter of 1832 by Lyon. In 1845 Freeman tied to the original corner. In 1852 Everett tied to the original corner. In 1879 Barber tied to an old stone at the corner. No other recent record of the corner was found.

CORNER EVIDENCE FOUND

I was unable to locate any evidence of the stone. I reset the corner at an occupied location. Verified the location East of the corner. The closing dimensions West measured really long. Verified it's location using EDM & GPS methods.

DESCRIPTION OF CORNER AND WITNESS MONUMENTS, references and accessories used to perpetuate the original or re-established location of this corner. Witnesses to monument location Bobby Sedgwick & Brad Digman & Shelby Blindert

SKETCH:



Austin Engineering LLC

4211 HWY 81 E, LANCASTER, WI 53813
 PHONE 608-723-6363 FAX 608-723-6702

JOB NUMBER 08S002
 FIELDBOOK: TDSR, 2910
 G:\T1NR1W\T1NR1W
 H:\TIE\T1NR1W\72

DRAWN BY: SW AUSTIN
 APPROVED: LL AUSTIN