

U.S. PUBLIC LAND SURVEY MONUMENT RECORD - GRANT COUNTY, WI

Section 18, Town 1 North Range 1 West, Town of Hazel Green (a)

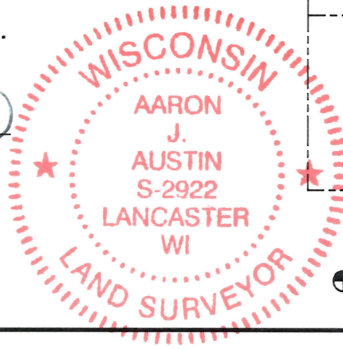
NOTE: This form is intended and designed to fulfill all requirements of the Wisconsin Administrative Code Chapter A-E 7.08, U.S. Public Land Survey Monument Record (3) (a) (b) (c) (d) (e) (f) (g) (h) (i).

CERTIFICATE: (i)

I, Aaron J. Austin, Wisconsin Professional Land Surveyor, do hereby certify that the corner location on this record was determined by me and/or under my direct supervision and that this U.S. Public Land Survey Monument Record is correct and complete to the best of my knowledge and belief.

Dated this 31st day of January, 2024.

Aaron J. Austin, S-2922



Grant County Coordinates: NAD 83 (2011) Northing: 415,615.25 Easting: 869,371.41

HISTORY OF CORNER ESTABLISHMENT:

Original corner was set in 1832 by Lucius Lyon. Larry Austin set a 1" Rebar with a Grant County Aluminum Cap and prepared a Survey Monument Record dated 6-8-2009.

DESCRIPTION OF CORNER EVIDENCE FOUND: (b) (f) (g) (h)

I found the 1" Rebar Larry set. I set four witness corners after I verified the Monument's location with G.P.S. and E.D.M. methods.

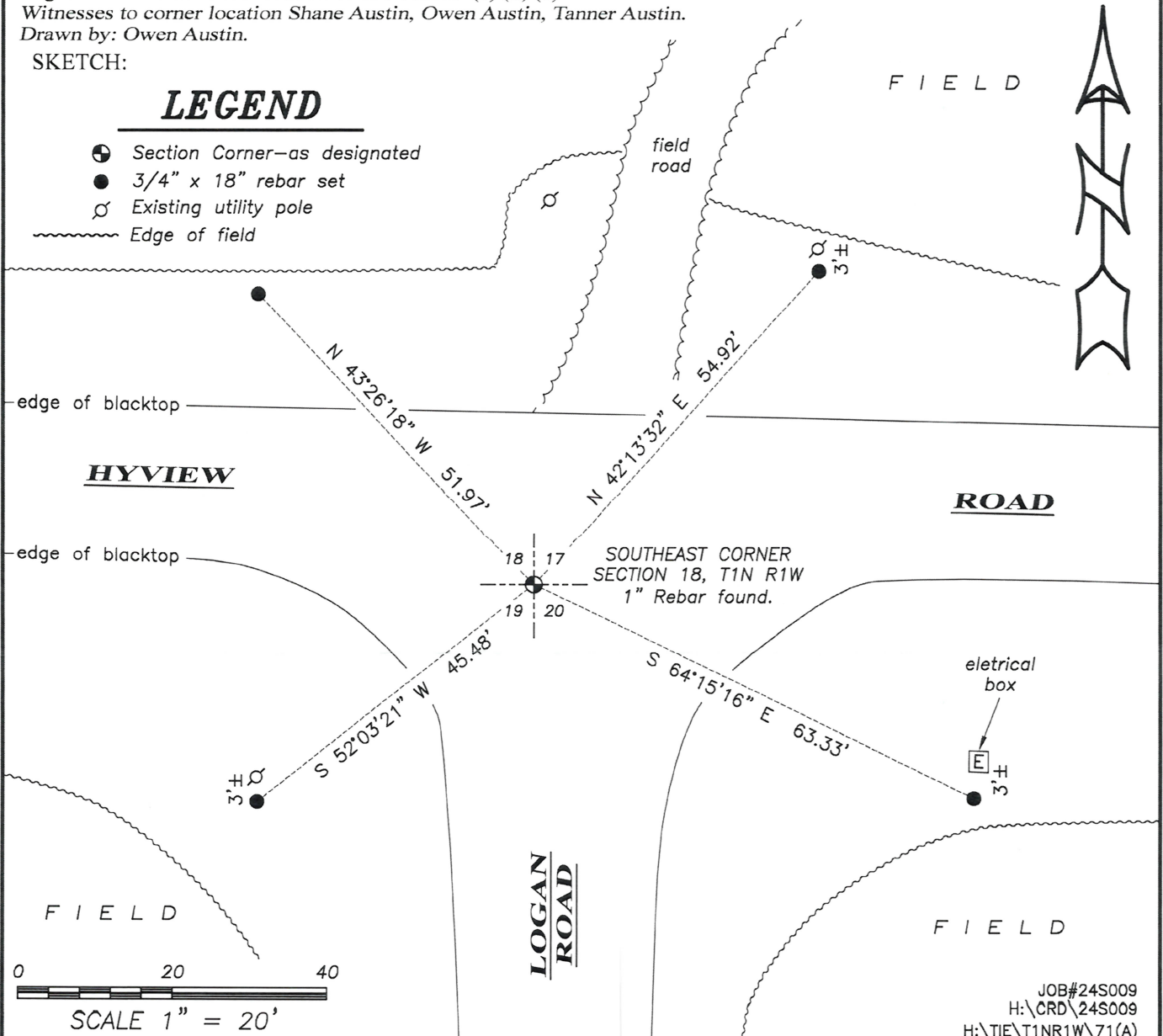
DESCRIPTION OF CORNER AND WITNESS MONUMENTS, references and accessories used to perpetuate the original or re-established location of this corner. (c) (d) (e)

Witnesses to corner location Shane Austin, Owen Austin, Tanner Austin. Drawn by: Owen Austin.

SKETCH:

LEGEND

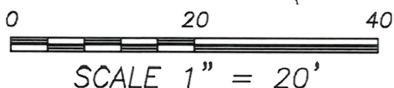
- Section Corner—as designated
3/4" x 18" rebar set
Existing utility pole
Edge of field



HYVIEW

ROAD

LOGAN ROAD

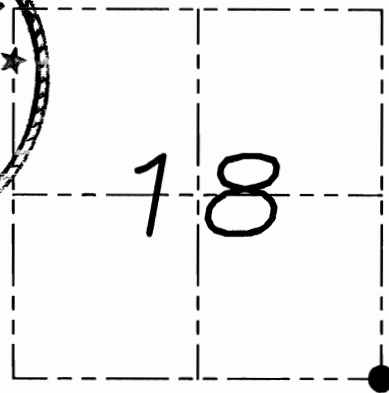


U.S. PUBLIC LAND SURVEY MONUMENT RECORD

Section 18, Town 1 North Range 1 West, Town of Hazel Green, Grant County, Wisconsin

CERTIFICATE

I, Larry L. Austin, do hereby certify that the corner location on this record was determined by me and/or under my direct supervision and that this U.S. public land survey monument record is correct and complete to the best of my knowledge and belief.



● = CORNER LOCATION

Larry L. Austin
Larry L. Austin, S-1903

6.8.09
date

HISTORY OF CORNER

Corner was originally set in the 2nd quarter of 1832 by Lyon. In 1844 Wiltse tied to the corner. In 1854 Dickey tied to the corner. In 1872 McFall tied to the corner. In 1879 Barber tied to the corner and found an old stone. No other recent record of the corner was found.

CORNER EVIDENCE FOUND

After excavating with a backhoe, no evidence of the corner or stone monument were found. I reset the corner based on proportionate measurements to all adjoining corners. Verified this location using EDM & GPS methods.

DESCRIPTION OF CORNER AND WITNESS MONUMENTS, references and accessories used to perpetuate the original or re-established location of this corner. Witnesses to monument location Bobby Sedgwick & Brad Digman & Shelby Blindert

SKETCH:

LEGEND

- ◆ Number 8 x 30" rebar set with Grant County Aluminum cap
- Number 4 x 24" Rebar set with red plastic "TIE" cap
- x- Approximate existing fence

1'± WEST UTILITY POLE

2'± SOUTH GUY WIRE

LIMITS OF EXCAVATION

HYVIEW

ROAD

LOGAN

FIELDS

NOT TO SCALE

NORTHING: 415,615.17
EASTING: 869,371.39

Austin Engineering LLC

4211 HWY 81 E, LANCASTER, WI 53813
PHONE 608-723-8363 FAX 608-723-8702

JOB NUMBER 08S002
FIELDBOOK: TDSR, 2910
G:\T1NR1W\T1NR1W
H:\TIE\T1NR1W\71

DRAWN BY: SW AUSTIN
APPROVED: LL AUSTIN