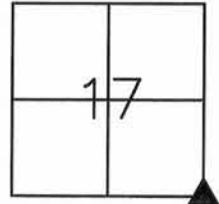


UNITED STATES PUBLIC LAND SURVEY MONUMENT RECORD  
 GRANT COUNTY, WISCONSIN  
 SECTION 17, TOWNSHIP 1 NORTH, RANGE 1 WEST OF THE 4TH P.M.

HISTORY OF CORNER:

ORIGINAL CORNER SET IN 1832 BY LUCIUS LYON. IN 2003, LARRY AUSTIN PLACED A 1" REBAR WITH GRANT COUNTY ALUMINUM MONUMENT AT LOCATION.

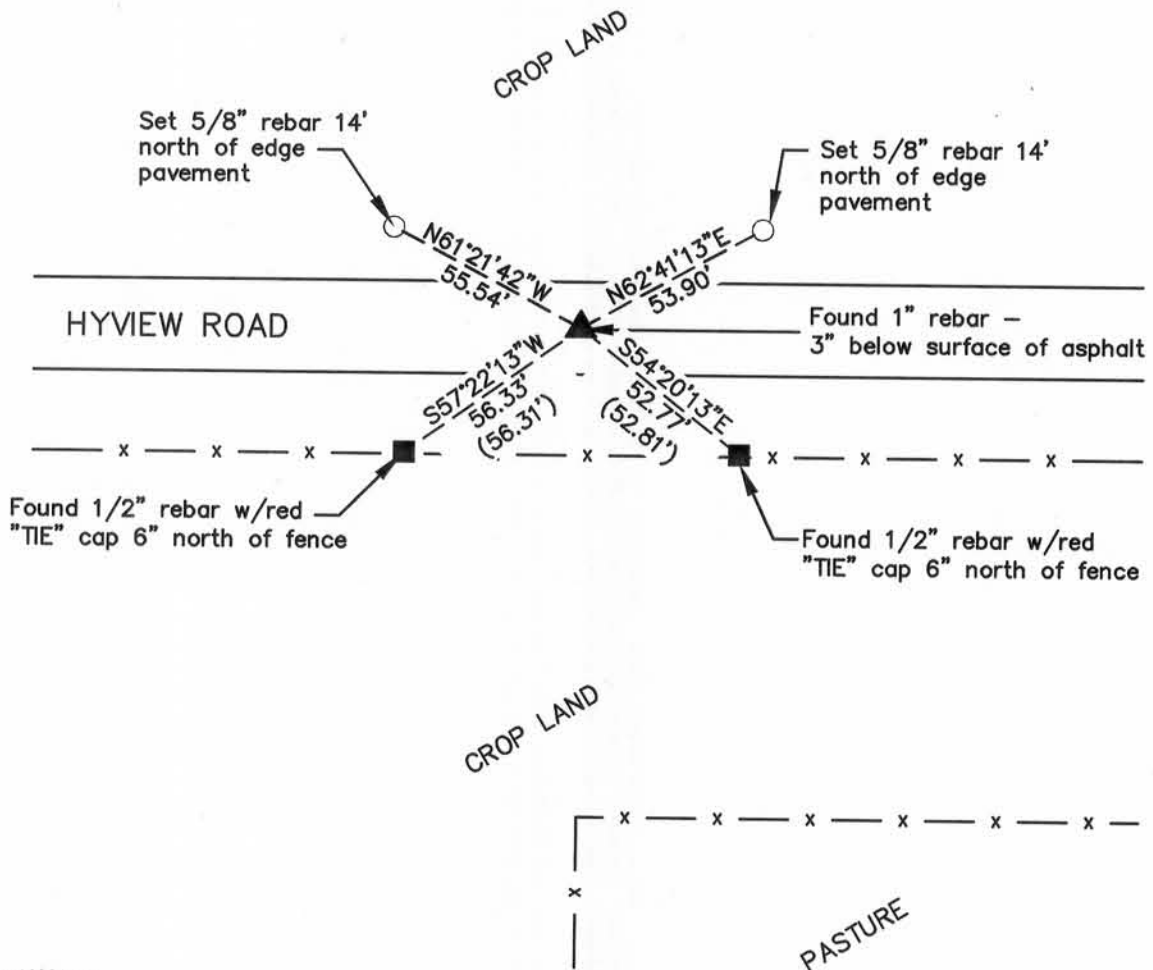


SOUTHEAST CORNER  
 SEC 17, T1N, R1W  
 TOWN OF HAZEL GREEN  
 CORNER NUMBER 69

DESCRIPTION OF CORNER AND EVIDENCE FOUND:

FOUND 1" IRON REBAR AT LOCATION. FOUND TWO TIES PER AUSTIN CORNER CERTIFICATE. ACCEPTED CORNER AND PLACED NEW SWING TIES AS SHOWN BELOW.

PLAN - VIEW



I, Craig L. Geiser certify that the corner location shown on this record was determined by me or under my direction and control and that this U.S. Public Land Survey Monument Record is correct and complete to the best of my knowledge and belief.

*Craig L. Geiser* 12-15-15  
 Signature Date

IIW, P.C.  INTEGRITY.EXPERTISE.SOLUTIONS www.iiwengr.com • 800.556.4491		ARCHITECTURE CIVIL ENGINEERING CONSTRUCTION SERVICES ENVIRONMENTAL ENGINEERING LAND SURVEYING MUNICIPAL ENGINEERING STRUCTURAL ENGINEERING TRANSPORTATION ENGINEERING
DRAWN	JJB	FIELD BK. 422
CHECKED	CLG	PROJ. NO. 14760
DATE	11-17-15	SHEET 1 of 1
P:\14\700\760\DRAWINGS\SURVEY\14760 2015 CORNER CERTS		

JAN 07 2016

69

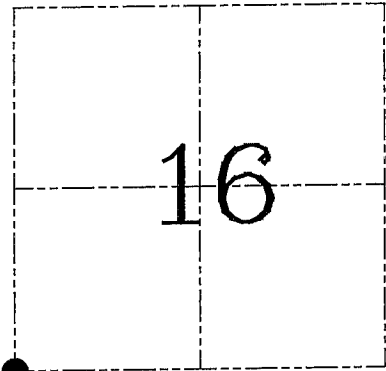
**U.S. PUBLIC LAND SURVEY MONUMENT RECORD – GRANT COUNTY, WI**  
**Section 16, Town 1 North Range 1 West, Town of Hazel Green**

**CERTIFICATE**

I, Larry L. Austin, do hereby certify that the corner location on this record was determined by me and/or under my direct supervision and that this U.S. public land survey monument record is correct and complete to the best of my knowledge and belief.

Dated this 8th day of July, 2005

*Larry L. Austin*  
 Larry L. Austin S-1903



● = CORNER LOCATION

**HISTORY OF CORNER ESTABLISHMENT**

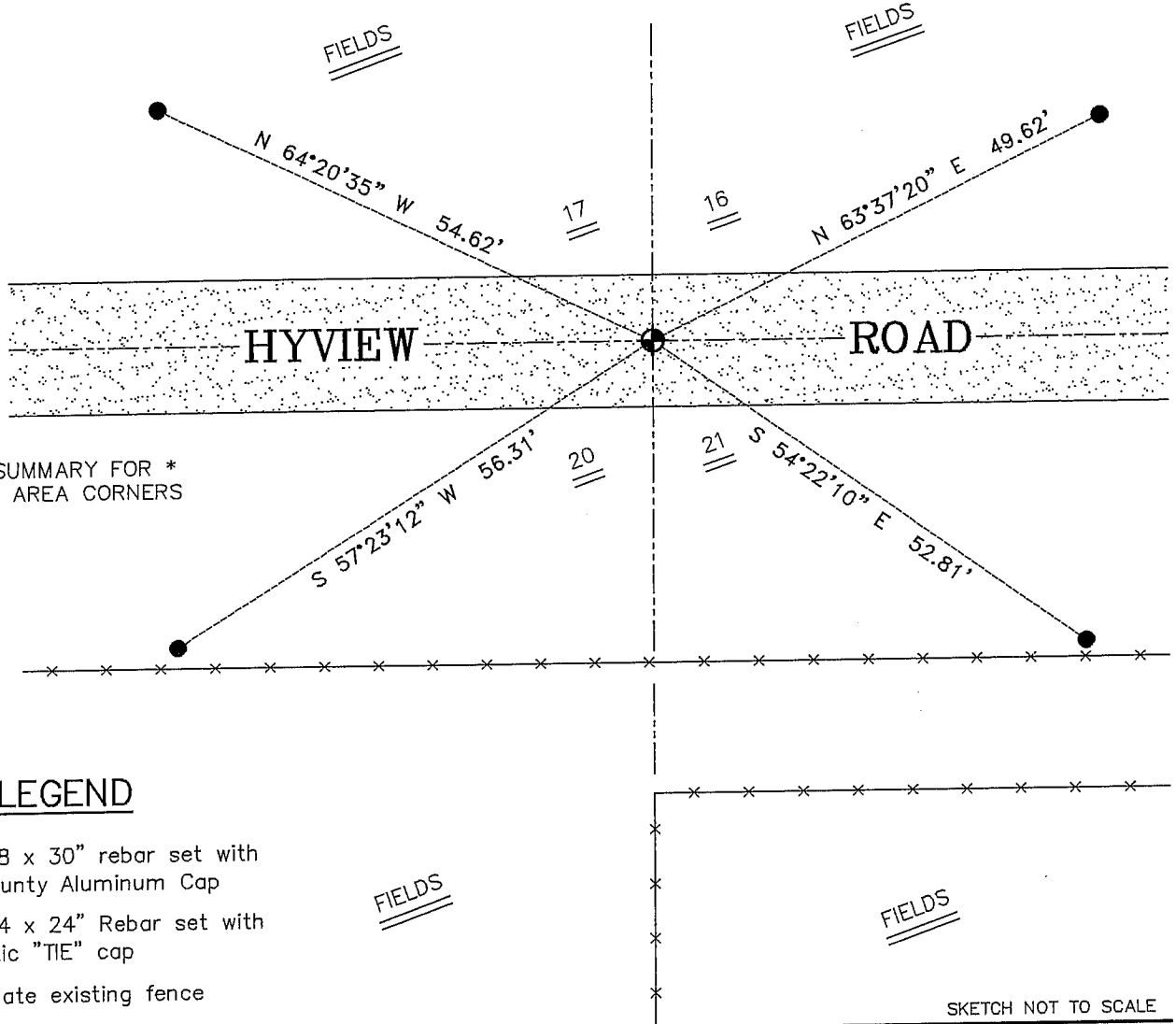
Corner was originally set in 1832 by Lyon.  
 No other record of the corner was found.

**DESCRIPTION OF CORNER EVIDENCE FOUND**

I set the corner at an occupied location.  
 I accepted it's location after an EDM & GPS traverse of the area.

**DESCRIPTION OF CORNER AND WITNESS MONUMENTS**, references and accessories used to perpetuate the original or re-established location of this corner. Witnesses to corner location Bobby Sedgwick & Shelby Blindert & Brad Digman

**SKETCH:**



\* SEE SECTION SUMMARY FOR \*  
 RELATIONSHIP TO AREA CORNERS

**LEGEND**

- Number 8 x 30" rebar set with Grant County Aluminum Cap
- Number 4 x 24" Rebar set with red plastic "TIE" cap
- x— Approximate existing fence

SKETCH NOT TO SCALE

**AUSTIN ENGINEERING, LLC**

4211 HWY 81 EAST, LANCASTER, WI 53813  
 PHONE 608-723-6363 FAX 608-723-6702

FIELDBOOK: TDSR, 2305  
 G: \T1NR1W\T1NR1W  
 H: \TIE\T1NR1W\69  
 JOB NUMBER 03S127

DRAWN BY: SW AUSTIN  
 APPROVED: LL AUSTIN

**CORNER NUMBER 69**