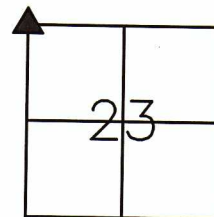


11065

UNITED STATES PUBLIC LAND SURVEY MONUMENT RECORD
 GRANT COUNTY, WISCONSIN
 SECTION 23, TOWNSHIP 1 NORTH, RANGE 1 WEST OF THE 4TH P.M.

HISTORY OF CORNER:

ORIGINAL CORNER SET IN 1832 BY LUCIUS LYON. IN 1996, BRUCE BOWDEN PLACED A GRANT COUNTY ALUMINUM MONUMENT AT LOCATION.

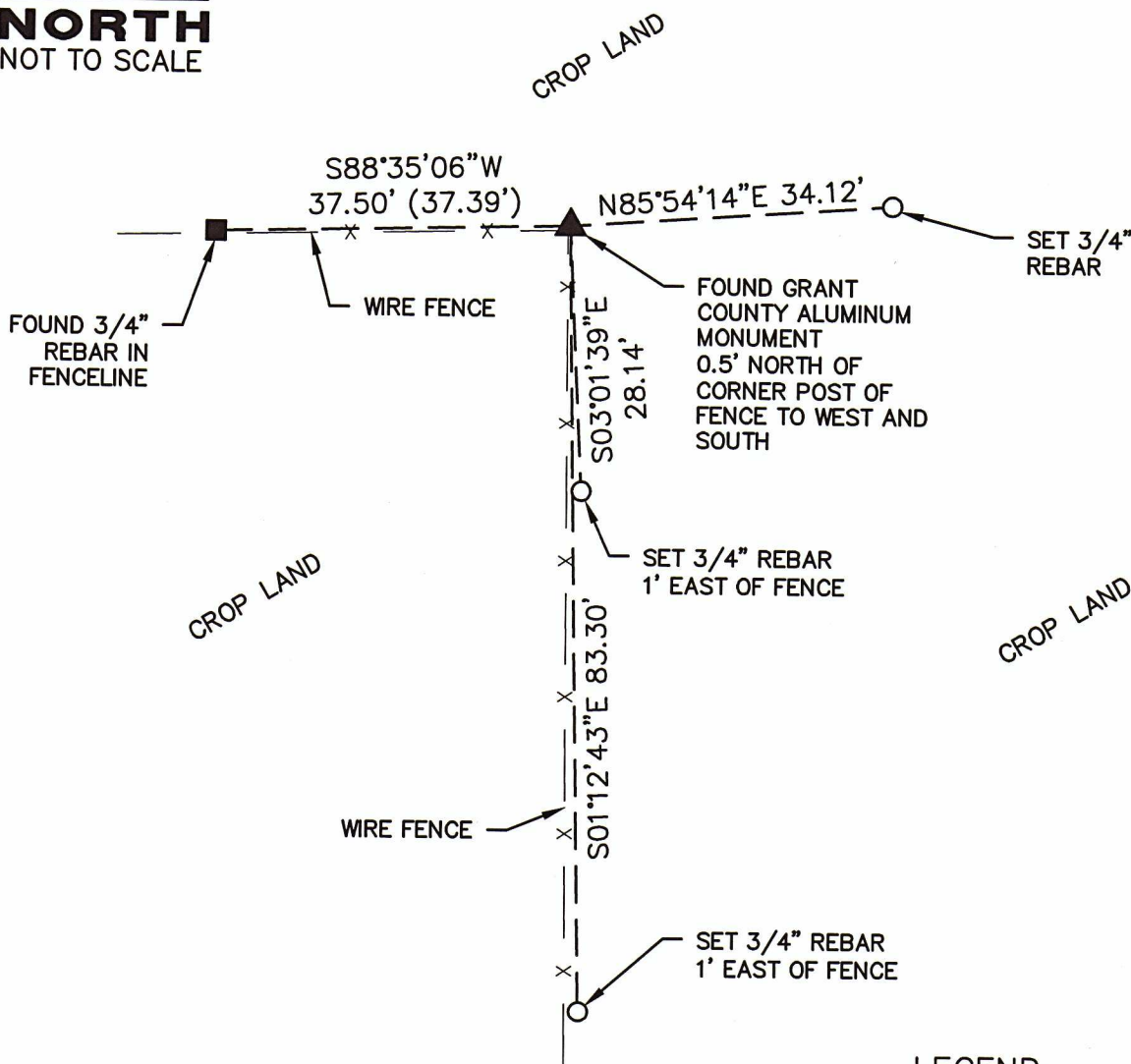


NORTHWEST CORNER
 SEC 23, T1N, R1W
 TOWN OF HAZEL GREEN
 CORNER NUMBER 65

DESCRIPTION OF CORNER AND EVIDENCE FOUND:

FOUND ALUMINUM MONUMENT AT LOCATION. FOUND ONE TIE PER BOWDEN CORNER CERTIFICATE. VERIFIED CORNER LOCATION WITH RECORD DISTANCES ON RECENT LOCAL SURVEYS. ACCEPTED CORNER AND PLACED NEW SWING TIES AS SHOWN BELOW.

PLAN - VIEW



LEGEND

- ▲ FOUND ALUMINUM MONUMENT
- FOUND 3/4" IRON REBAR
- SET 3/4" IRON REBAR
- () RECORDED AS

GRANT COUNTY COORDINATES:
 NORTHING: 415537.68
 EASTING: 885209.90



I, Craig L. Geiser certify that the corner location shown on this record was determined by me or under my direction and control and that this U.S. Public Land Survey Monument Record is correct and complete to the best of my knowledge and belief.

Craig L. Geiser
 Signature Date 5-26-21

origin design®
 800 556-4491 origindesign.com

DRAWN	JJB	PLAT NO.	3-WI-21
CHECKED	CLG	PROJ. NO.	21708
DATE	5-26-21	SHEET	1 of 1

P:\21\700\708\DRAWINGS\SURVEY\21708 TIESHEETS

U. S. PUBLIC LAND SURVEY MONUMENT RECORD

INSTRUCTIONS: This record shall show the location of the corner and shall include all of the following nine elements (a through i).

(a) Identify the corner by reference to the U.S. public land survey system.

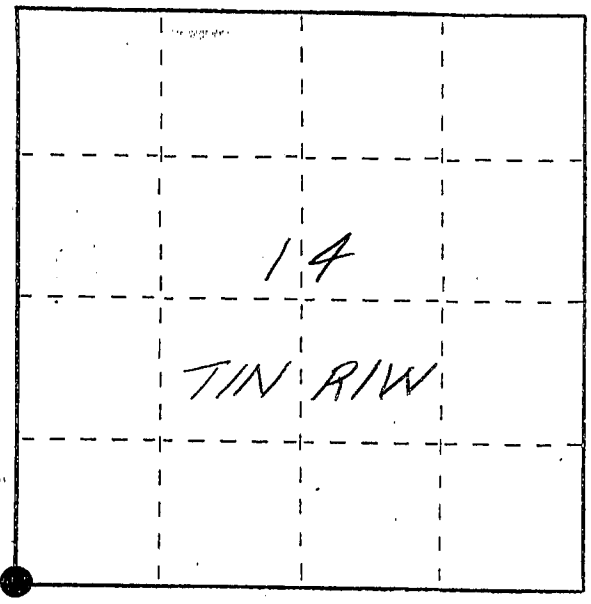
● = Corner monument restored.

The Southwest Corner of
Section 14, Town 1 North,
Range 1 West, Hazel
Green Township, Grant
County, Wisconsin

GRANT COUNTY COORDINATES

X 885209.74

Y 415537.75



LAT- 42°33'3.1664" N

LONG- 90°27'54.8470" W

(b) Describe any record evidence, monument evidence, occupational evidence, testimonial evidence or any other material evidence you considered, and whether the monument was found or placed.

Monument set from existing physical evidence of roads and fences after verification by proportionate measurements from a GPS and EDM survey of the area.

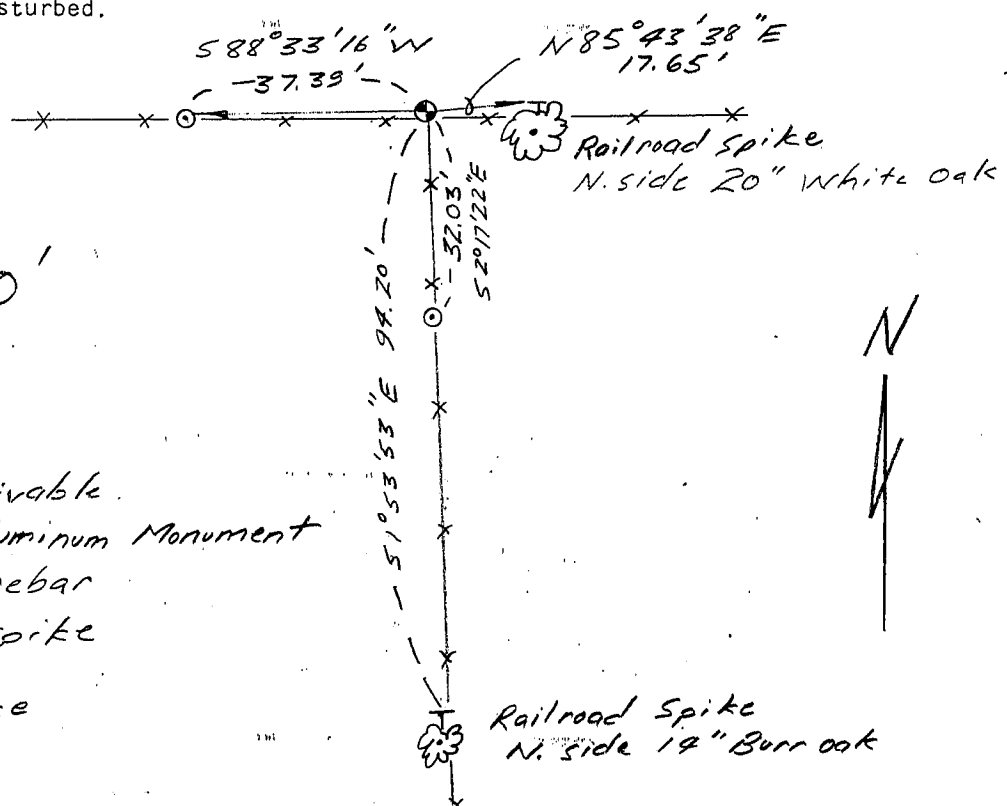
(c) In the plan view drawing below, provide reference ties to at least 4 witness monuments, or, if the location is within a municipality, to at least 2 witness monuments. (Witness monuments shall be made of concrete, natural stone, iron or other equally durable material, ~~except~~ wood.) Describe witness monuments.

(d) Show a plan view drawing depicting the relevant monuments and reference ties which is sufficient in detail to enable accurate relocation of the corner monument if the corner monument is disturbed. Indicate north.

Scale:
1" ≈ 30'

Legend

- - Berntsen Drivable Aluminum Monument
- ⊙ - #6 x 24" rebar
- T - Railroad Spike
- x-x- wire fence



(e) Describe any material discrepancy between the location of the corner as restored or reestablished and the location of that corner as previously restored or reestablished by distance and direction. Show the discrepancy on the plan view drawing under (d), above. Show the distances between the corner as previously restored or reestablished and (1) the corner as restored or reestablished, and (2) to at least 2 of the witness monuments shown on the drawing in (d), above.

NONE

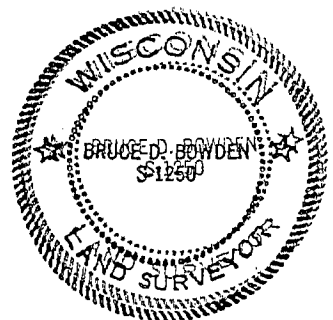
(f) Was the corner restored through acceptance of (1) an obliterated evidence location, or, (2) a found perpetuated location?

(2) FOUND PERPETUATED. LOCATION.

(g&h) Was the corner reestablished through lost corner proportionate methods? If so, show the method, including the directions and distances to other public land survey corners used as evidence or used for proportioning in determining the corner location?

No.

Affix Land Surveyor Seal



I, BRUCE D. BOWDEN,

(type or print name) certify that the corner location shown on this record was determined by me or under my direction and control and that this U.S. Public Land Survey Monument Record is correct and complete to the best of my knowledge and belief.

Signature

date

Bruce D. Bowden May 22, 1996