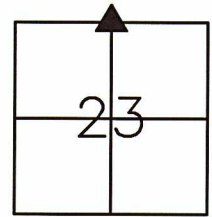


11064

UNITED STATES PUBLIC LAND SURVEY MONUMENT RECORD
 GRANT COUNTY, WISCONSIN
 SECTION 23, TOWNSHIP 1 NORTH, RANGE 1 WEST OF THE 4TH P.M.

HISTORY OF CORNER:

ORIGINAL CORNER SET IN 1832 BY LUCIUS LYON. IN 1996, BRUCE BOWDEN PLACED A GRANT COUNTY ALUMINUM MONUMENT AT LOCATION.



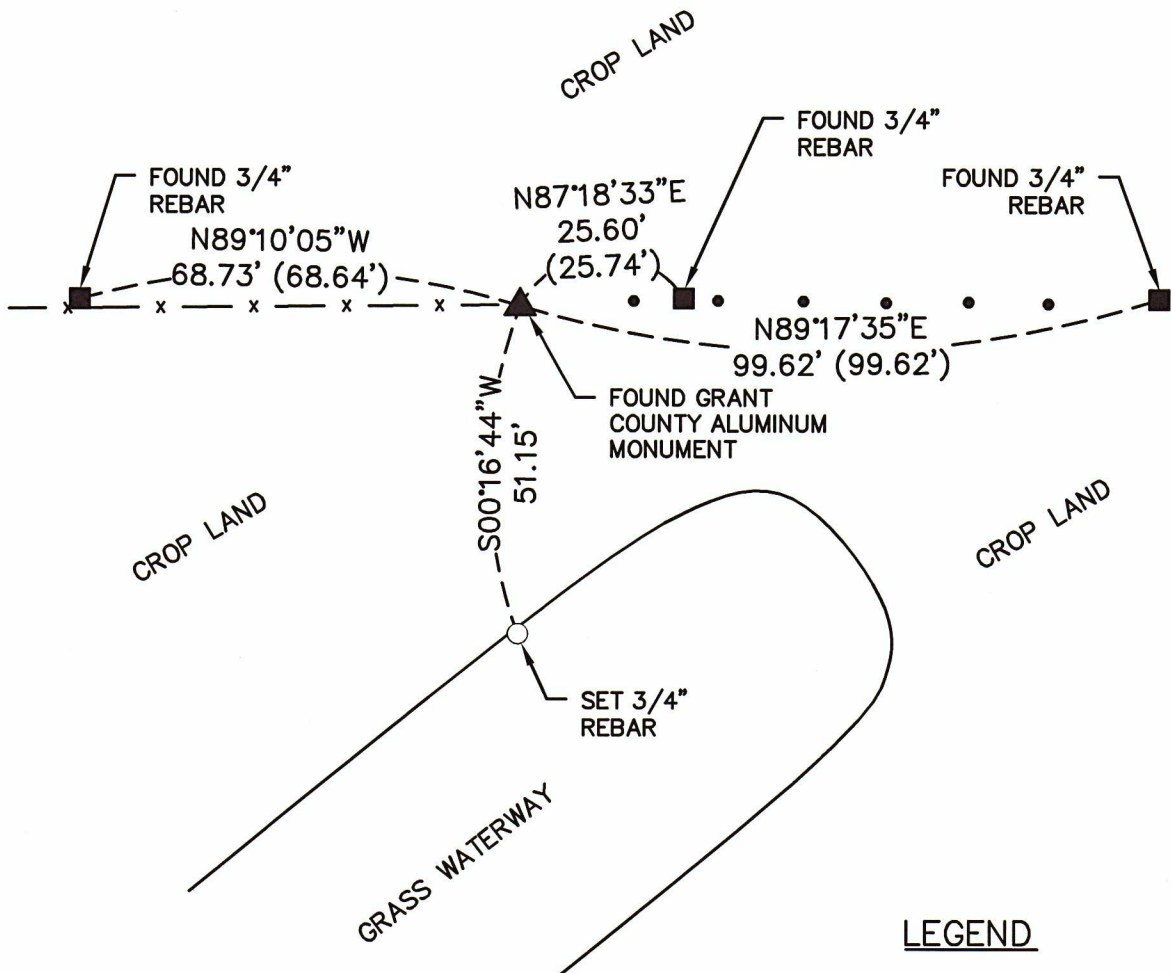
NORTH 1/4 CORNER
 SEC 23, T1N, R1W
 TOWN OF HAZEL GREEN
 CORNER NUMBER 64

DESCRIPTION OF CORNER AND EVIDENCE FOUND:

FOUND ALUMINUM MONUMENT AT LOCATION. FOUND THREE TIES PER BOWDEN CORNER CERTIFICATE. ACCEPTED CORNER AND PLACED NEW SWING TIE AS SHOWN BELOW.



PLAN - VIEW



LEGEND

- x — x — WIRE FENCE
- ▲ FOUND ALUMINUM MONUMENT
- FOUND 3/4" IRON REBAR
- SET 3/4" IRON REBAR
- FENCE POST
- () RECORDED AS

GRANT COUNTY COORDINATES:
 NORTHING: 415561.63
 EASTING: 887861.95



I, Craig L. Geiser certify that the corner location shown on this record was determined by me or under my direction and control and that this U.S. Public Land Survey Monument Record is correct and complete to the best of my knowledge and belief.

Craig L. Geiser 4.30.21
 Signature Date

IIW, P.C.		ARCHITECTURE	
IIW INTEGRITY. EXPERTISE. SOLUTIONS www.iiwengr.com • 800.556.4491		CIVIL ENGINEERING	
		CONSTRUCTION SERVICES	
DRAWN JJB		PLAT NO. 1-WI-21	
CHECKED CLG		PROJ. NO. 21708	
DATE 4-30-21		SHEET 1 of 1	
P:\21\700\708\DRAWINGS\SURVEY\21708 TIESHEETS			

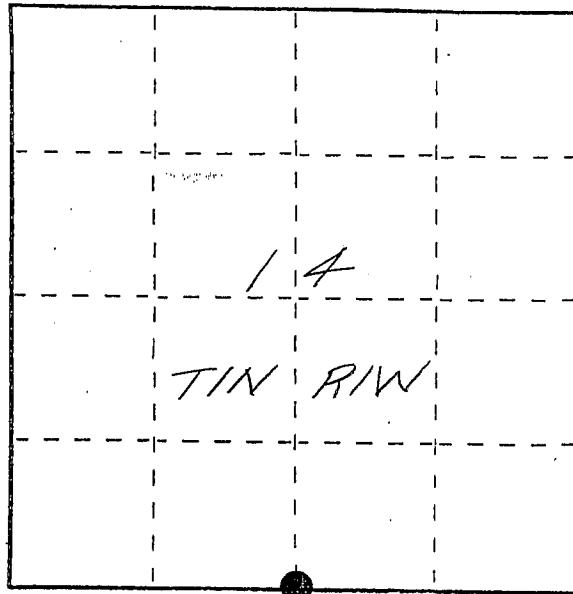
U. S. PUBLIC LAND SURVEY MONUMENT RECORD

INSTRUCTIONS: This record shall show the location of the corner and shall include all of the following nine elements (a through i).

(a) Identify the corner by reference to the U.S. public land survey system.

● = Corner monument restored.

The South Quarter Corner of
Section 14, Town 1 North,
Range 1 West, Hazel Green
Township, Grant County,
Wisconsin.



GRANT COUNTY COORDINATES

X- 887861.88
Y- 415561.61

LAT. 42°33'3.2970 "N
LONG. 90°27'19.4150 "W

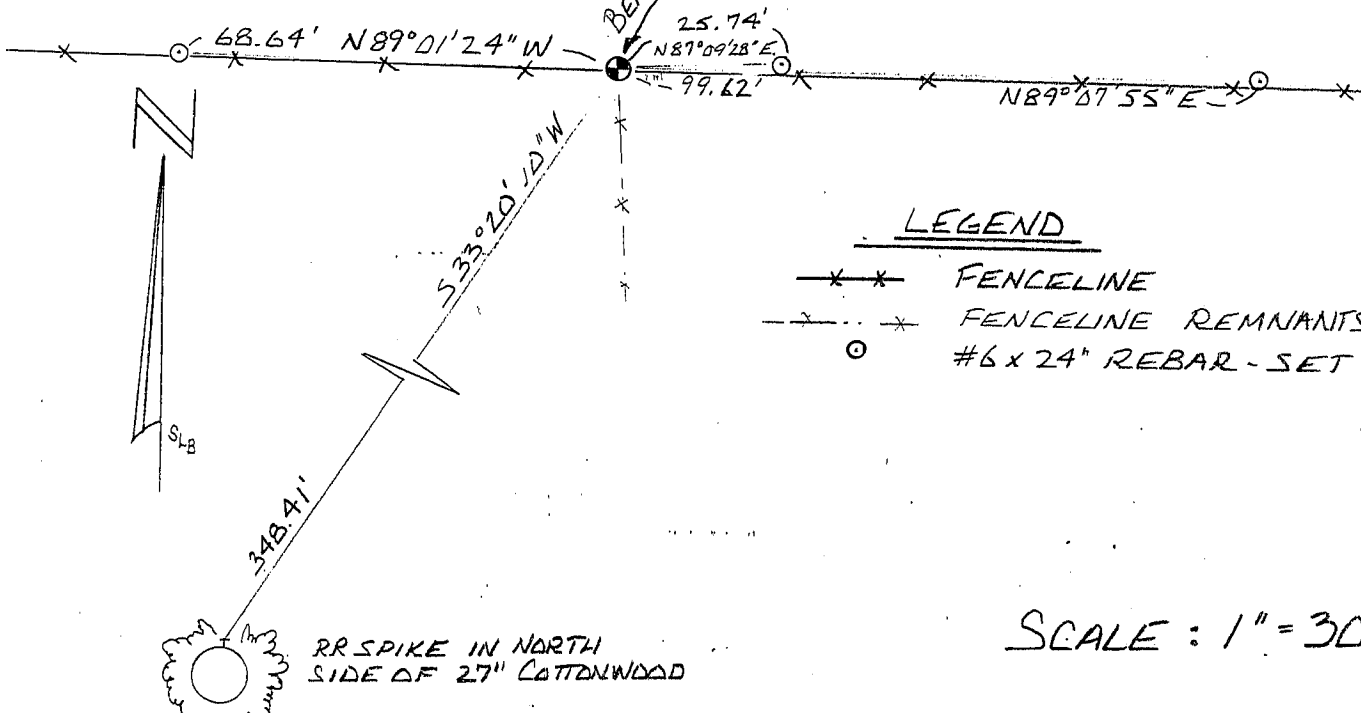
(b) Describe any record evidence, monument evidence, occupational evidence, testimonial evidence or any other material evidence you considered, and whether the monument was found or placed.

Monument set from existing physical evidence of roads and fences after verification by proportionate measurements from a GPS and EDM survey of the area.

(c) In the plan view drawing below, provide reference ties to at least 4 witness monuments, or, if the location is within a municipality, to at least 2 witness monuments. (Witness monuments shall be made of concrete, natural stone, iron or other equally durable material, ~~except~~ wood.) Describe witness monuments.

(d) Show a plan view drawing depicting the relevant monuments and reference ties which is sufficient in detail to enable accurate relocation of the corner monument if the corner monument is disturbed. Indicate north.

BERNTSEN DRIVABLE
ALUMINUM MONUMENT
@ S 1/4 CORNER OF
SEC. 14, T1N, R1W



SCALE: 1" = 30'

(e) Describe any material discrepancy between the location of the corner as restored or reestablished and the location of that corner as previously restored or reestablished by distance and direction. Show the discrepancy on the plan view drawing under (d), above. Show the distances between the corner as previously restored or reestablished and (1) the corner as restored or reestablished, and (2) to at least 2 of the witness monuments shown on the drawing in (d), above.

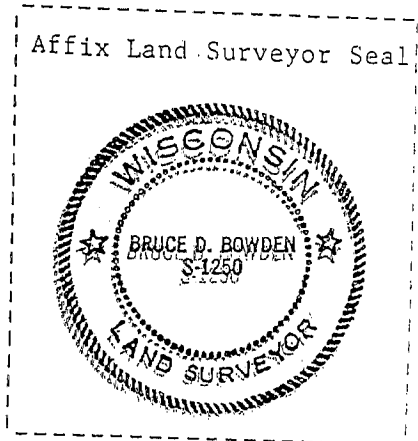
NONE

(f) Was the corner restored through acceptance of (1) an obliterated evidence location, or, (2) a found perpetuated location?

(2) A FOUND PERPETUATED LOCATION

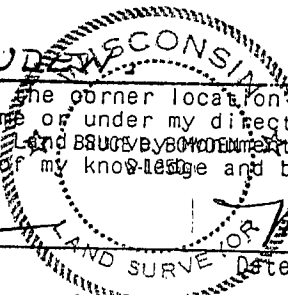
(g&h) Was the corner reestablished through lost corner proportionate methods? If so, show the method, including the directions and distances to other public land survey corners used as evidence or used for proportioning in determining the corner location?

NO



I, BRUCE D. BOWDEN (type or print name) certify that the corner location shown on this record was determined by me or under my direction and control and that this U.S. Public Land Survey Record is correct and complete to the best of my knowledge and belief.

Bruce D. Bowden
Signature



May 22, 1996
Date