

11059

# U.S. PUBLIC LAND SURVEY MONUMENT RECORD

(AS REQUIRED BY S.A-E 7.08, WI. ADM. CODE)

History of original corner establishment and subsequent restorations and description of any record, monument, occupational, testimonial, or other evidence considered.

The current tie sheet on file is the SW corner of 13-1-1W. The monument found agrees with the location described in CSM 1690. Larry Schmit accepted the location and Established Grant County Coordinates on subject corner on 3-11-2024. This tie sheet is prepared for the purpose of updating county coordinates and ties as shown herein.

- RESTORED THROUGH ACCEPTANCE OF AN OBLITERATED EVIDENCE LOCATION
- RESTORED THROUGH ACCEPTANCE OF A FOUND PERPETUATED LOCATION  
CONSIDERED A LOST CORNER AND REESTABLISHED THROUGH LOST CORNER PROPORTIONATE METHODS  
(INCLUDE A PLAN VIEW DRAWING SHOWING BEARING & DISTANCE TO OTHER PUBLIC LAND SURVEY CORNERS)
- USED FOR PROPORTIONING AND DETERMINING THE CORNER LOCATION
- RESTORED OR REESTABLISHED IN A LOCATION THAT DIFFERS FROM A PREVIOUS RESTORATION OR REESTABLISHMENT  
(INCLUDE A PLAN VIEW DRAWING AND INDICATE WHAT WAS SET AND/OR FOUND)

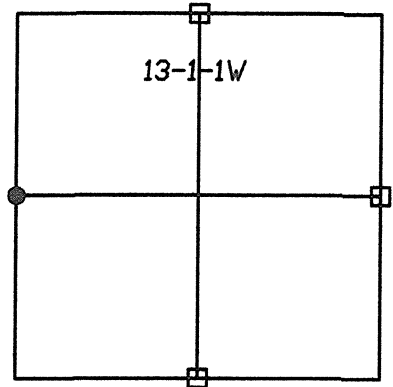
Describe the monument and accessories used to perpetuate the location of the corner. (include a plan view drawing and indicated what was set and/or found)

### LEGEND:

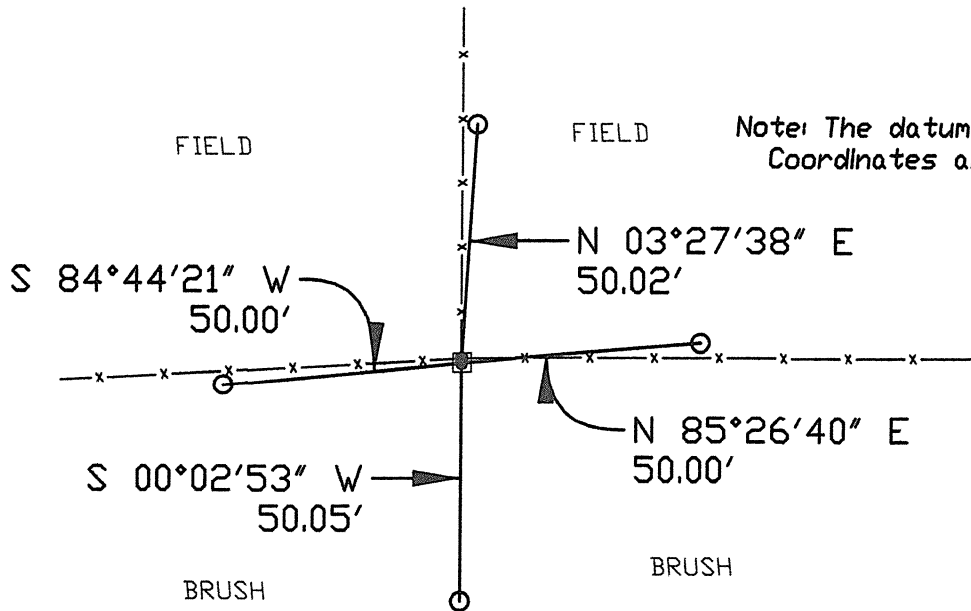
- FD 3/4" REBAR
- SET 3/4" IP TIE
- ( > ) RECORDED AS
- x—x— FENCE

● = LOCATION OF CORNER

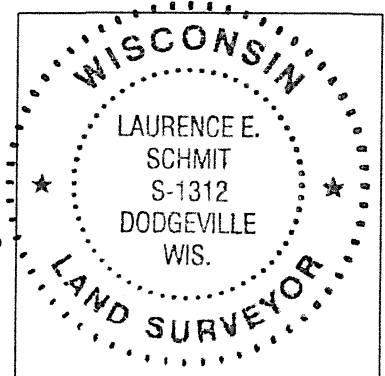
COUNTY INDEX NO: 1-1-059  
 COUNTY COORDINATE:  
 W 1/4 COR 13-1-1W  
 NORTHING N= 418213.58  
 EASTING E= 890514.23



Note: The datum is (WISCORS), GRANT COUNTY Coordinates are NAD83 (2011 adjustment)



SCALE: 1" = 40' FEET



GRANT \_\_\_\_\_ COUNTY, WISCONSIN  
 JOB ID: 24S-018 BOOK #: 24-1 PG 1

I, LAURENCE E SCHMIT CERTIFY THAT THE CORNER LOCATION SHOWN ON THIS RECORD WAS DETERMINED BY ME OR UNDER MY DIRECTION AND CONTROL AND THAT THIS U.S. PUBLIC LAND SURVEY MONUMENT RECORD IS CORRECT AND COMPLETE TO THE BEST OF MY KNOWLEDGE AND BELIEF.

*Laurence E Schmit*  
 SIGNATURE

3-12-2024

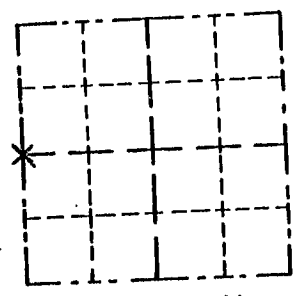
DATE:

LAND SURVEYORS SEAL

Survey Monument Record

CORNER NO. 59  
 SECTION 13  
 TOWN 1 N  
 RANGE 1 W

TYPE OF MONUMENT 3/4" X 24" Iron Rod  
 DATE PLANE COORDINATES: N \_\_\_\_\_  
 E \_\_\_\_\_  
 ELEVATION — M.S.L. DATUM: \_\_\_\_\_  
 BETA ANGLE: \_\_\_\_\_  
 FIELD BOOK: \_\_\_\_\_  
 PAGE \_\_\_\_\_



LOCATION  
(Indicated by "X")

BASIS FOR MONUMENT LOCATION

(Use reverse side if necessary)  
 Show info such as: History of corner, with reference to Vol. and pg., dates, surveyor; exact description of monument replaced; if location computed, by taped or EDM traverse; and owner, remarks, etc.

SEAL:

MONUMENT SET FROM EXISTING SURVEY AND FIELD EVIDENCE AFTER EXAMINATION OF THE ORIGINAL SURVEY PLAT AND FIELD NOTES AFTER A FIELD EDM SURVEY OF THE SECTION.

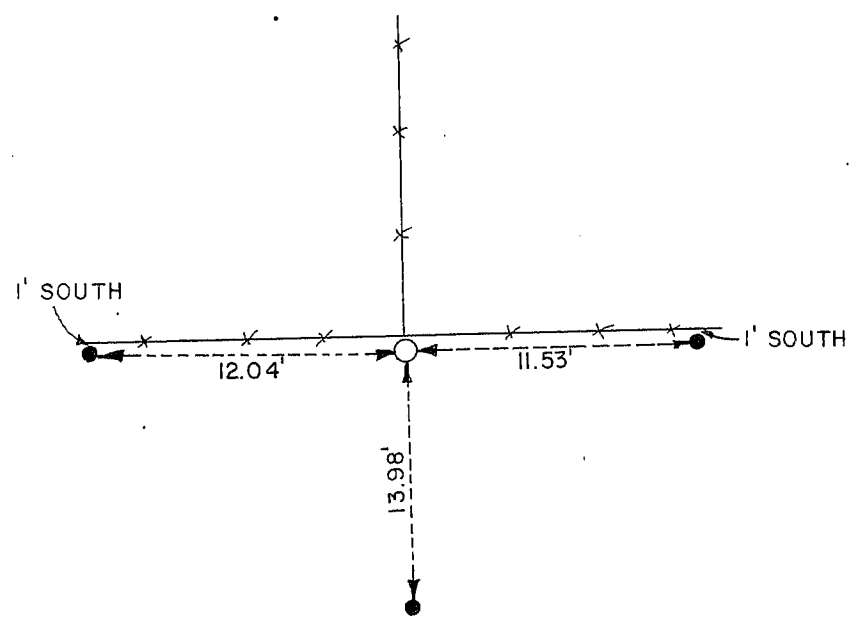
CERTIFIED CORRECT

Thomas Buick  
 Registered Land Surveyor

DATE: 2/5/90

TIE SKETCH

Show at least three (3) ties and monument



- = 3/4" X 24" IRON ROD
- = 5/8" X 18" IRON ROD
- \* \* = EXISTING FENCE