

11058

# U.S. PUBLIC LAND SURVEY MONUMENT RECORD - GRANT COUNTY, WI

Section 14, Town 1 North Range 1 West, Town of Hazel Green (a)

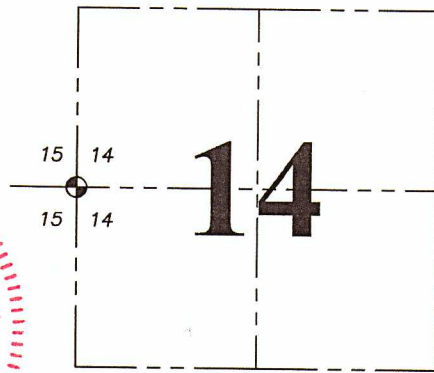
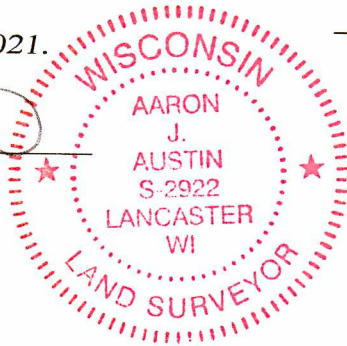
NOTE: This form is intended and designed to fulfill all requirements of the Wisconsin Administrative Code Chapter A-E 7.08, U.S. Public Land Survey Monument Record (3) (a) (b) (c) (d) (e) (f) (g) (h) (i).

### CERTIFICATE: (i)

I, Aaron J. Austin, Wisconsin Professional Land Surveyor, do hereby certify that the corner location on this record was determined by me and/or under my direct supervision and that this U.S. Public Land Survey Monument Record is correct and complete to the best of my knowledge and belief.

Dated this 17th day of May, 2021.

*Aaron J. Austin*  
Aaron J. Austin, S-2922



=CORNER LOCATION

Grant County Coordinates:  
NAD 83 (2011)  
Northing: 418,189.39  
Easting: 885,219.84

### HISTORY OF CORNER ESTABLISHMENT:

Original corner was set in 1832 by Lucius Lyon.  
Larry Austin set a 1" Rebar with a Grant County Aluminum cap and prepared a Survey Monument Record dated 10/30/2000.

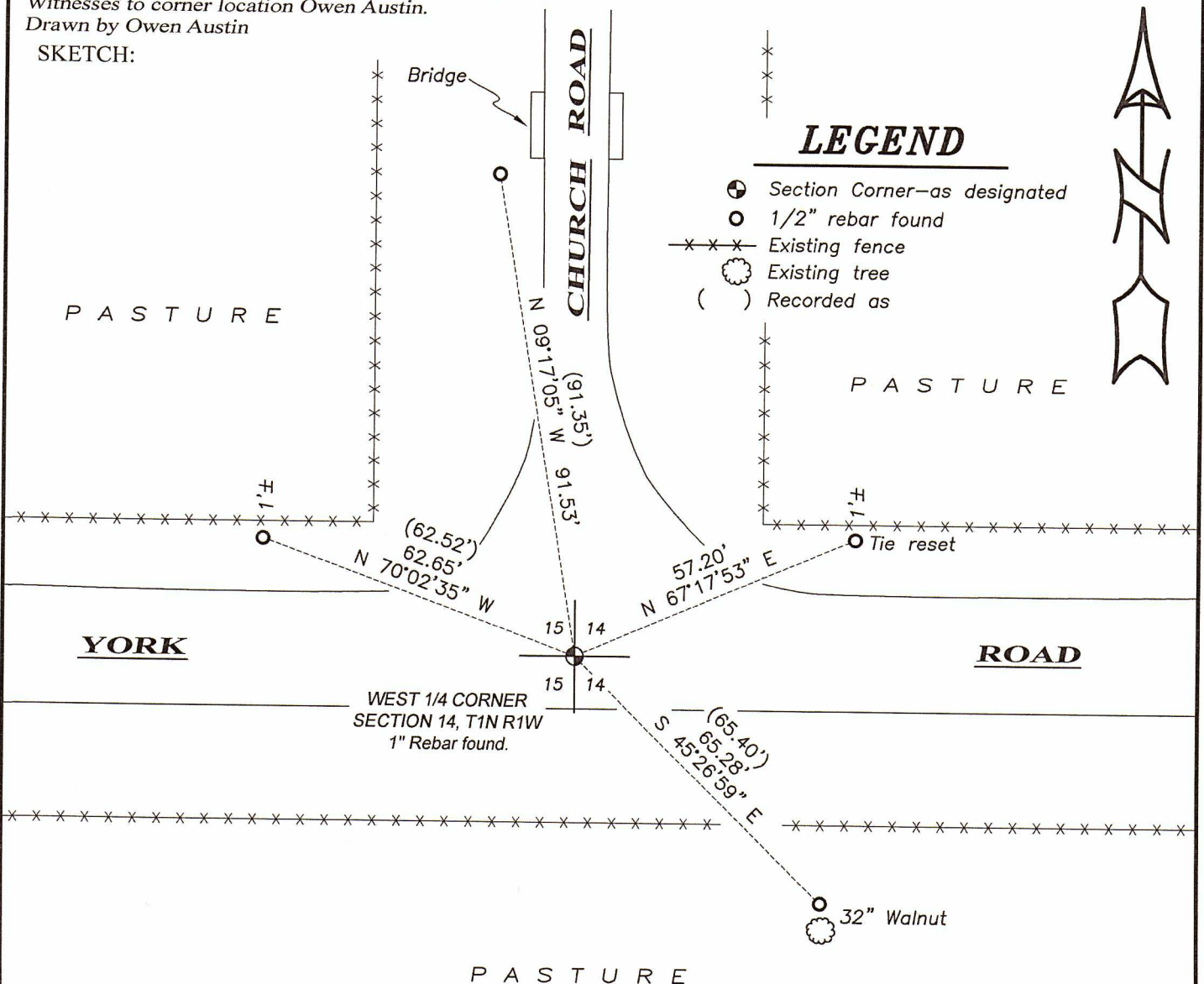
### DESCRIPTION OF CORNER EVIDENCE FOUND: (b) (f) (g) (h)

I found the 1" Rebar with no Aluminum cap and four witness corners Larry set. I verified the Monument's location with G.P.S. and E.D.M. methods.

### DESCRIPTION OF CORNER AND WITNESS MONUMENTS, references and accessories used to perpetuate the original or re-established location of this corner. (c) (d) (e)

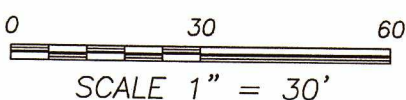
Witnesses to corner location Owen Austin.  
Drawn by Owen Austin

SKETCH:



### LEGEND

- Section Corner—as designated
- 1/2" rebar found
- Existing fence
- Existing tree
- Recorded as



SCALE 1" = 30'

# GRANT COUNTY CERTIFIED LAND CORNER

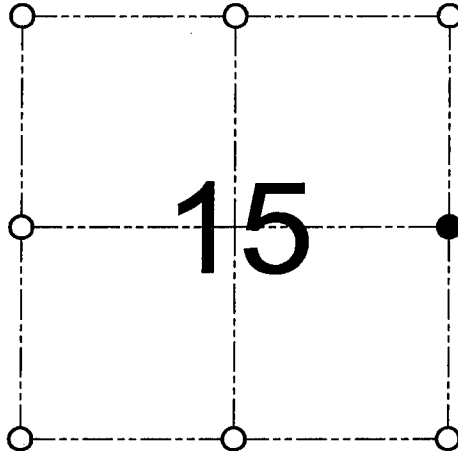
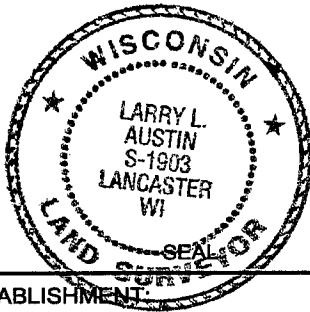
CORNER NUMBER 58

**CERTIFICATE:**

I, Larry L. Austin, do hereby certify that on the 17th day of October, 2000, I found evidence of the East 1/4 corner of Section 15, Town 1 North, Range 1 West, of the 4th Principal Meridian, and I re-established said corner according to the Wisconsin statutes as shown and described hereon.

Dated this 30th day of October, 2000

*Larry L. Austin*  
Larry L. Austin S-1903



● = CORNER LOCATION  
EAST 1/4 CORNER OF SECTION 15, T 1 N R 1 W TOWN OF HAZEL GREEN

**HISTORY OF ORIGINAL CORNER ESTABLISHMENT:**

Corner was originally set in 1832 by Lucius Lyon. Burbach stated he set an Aluminum monument.

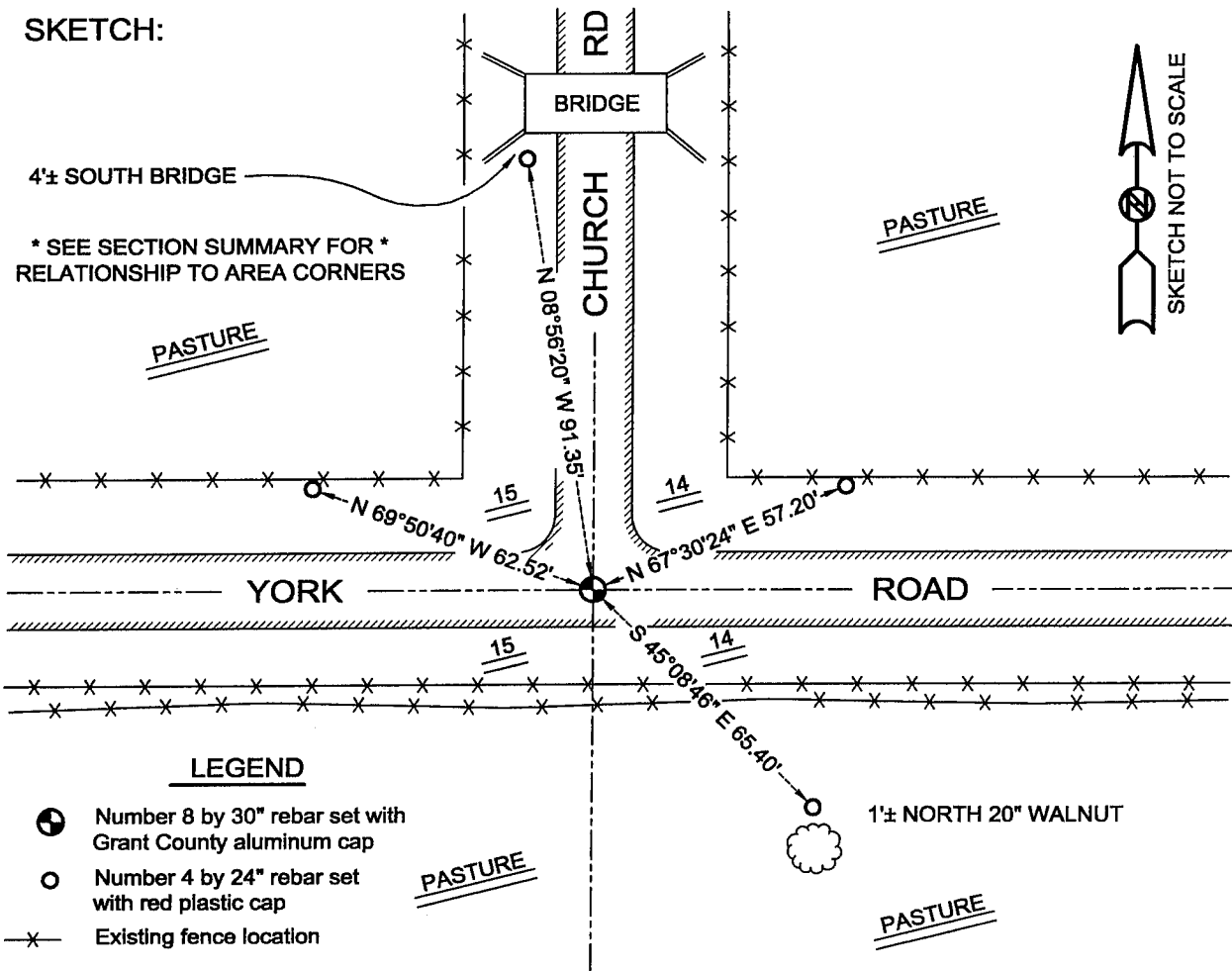
**DESCRIPTION OF CORNER EVIDENCE FOUND:**

I found no evidence of the Aluminum monument. I reset the corner based on occupational evidence. This location fit well with area corners. Verified this location using E.D.M. & G.P.S. methods.

**DESCRIPTION OF CORNER AND WITNESS MONUMENTS, references and accessories used to perpetuate the original or re-established location of this corner**

WITNESS TO THE CORNER LOCATION: SHANE AUSTIN & TIM FAUVER

**SKETCH:**



**LEGEND**

- ⊕ Number 8 by 30" rebar set with Grant County aluminum cap
- Number 4 by 24" rebar set with red plastic cap
- x— Existing fence location

C:\SC14\SWAIT\T1NR1W58