

11044

U.S. PUBLIC LAND SURVEY MONUMENT RECORD - GRANT COUNTY, WI

Section 11, Town 1 North Range 1 West, Town of Hazel Green (a)

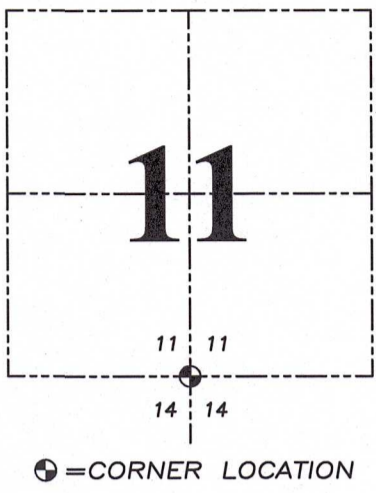
NOTE: This form is intended and designed to fulfill all requirements of the Wisconsin Administrative Code Chapter A-E 7.08, U.S. Public Land Survey Monument Record (3) (a) (b) (c) (d) (e) (f) (g) (h) (i).

CERTIFICATE: (i)

I, Aaron J. Austin, Wisconsin Professional Land Surveyor, do hereby certify that the corner location on this record was determined by me and/or under my direct supervision and that this U.S. Public Land Survey Monument Record is correct and complete to the best of my knowledge and belief.

Dated this 27th day of October, 2025

Aaron J. Austin
Aaron J. Austin, PLS-2922



Grant County Coordinates:
NAD 83 (2011)
Northing: 420,846.86
Easting: 887,878.46

HISTORY OF CORNER ESTABLISHMENT:

Original corner was set in 1832 by Lucius Lyon.
Keith Dalsing set a 1.25" Rebar and prepared a Survey Monument Record dated 9-18-1997.

DESCRIPTION OF CORNER EVIDENCE FOUND: (b) (f) (g) (h)

I found the 1.25" Rebar and four witness corners. I reset one witness corner and verified the Monument's location with G.P.S. and E.D.M. methods.

DESCRIPTION OF CORNER AND WITNESS MONUMENTS:

references and accessories used to perpetuate the original or re-established location of this corner. (c) (d) (e)
Witnesses to corner location Owen Austin.
Drawn by: Owen Austin.

SKETCH:

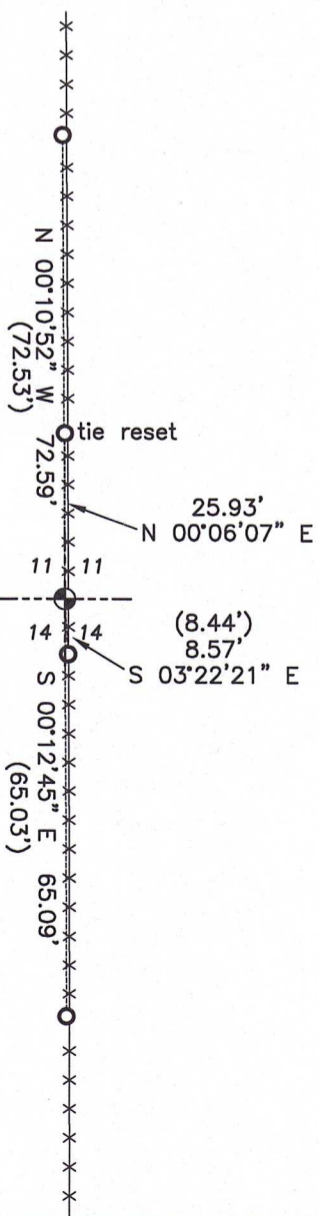
LEGEND

- ⊕ Section Corner—as designated
- 1/2" rebar found
- () Recorded as
- x-x-x- Existing fence

FIELD

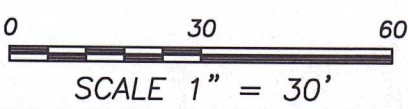
FIELD

SOUTH 1/4 CORNER
SECTION 11, T1N R1W
1.25" Rebar found.



FIELD

FIELD



Job#25S125
H:\CRD\25S171
H:\TIE\T1NR1W\44

U.S. PUBLIC LAND SURVEY MONUMENT RECORD

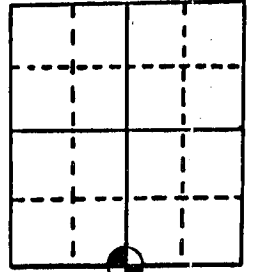
Note: This form is intended and designed to fulfill all requirements of Wisconsin Administrative Code, Chapter A-E 5.02, U.S. Public Land Survey Monument Record (3) (a) (b) (c) (d) (e) (f) (g) (h) (i). An additional sheet may be added if necessary to conform with said requirements.

(a) Corner location: Township 1 North

Range 1 West

Township HAZEL GREEN

County GRANT

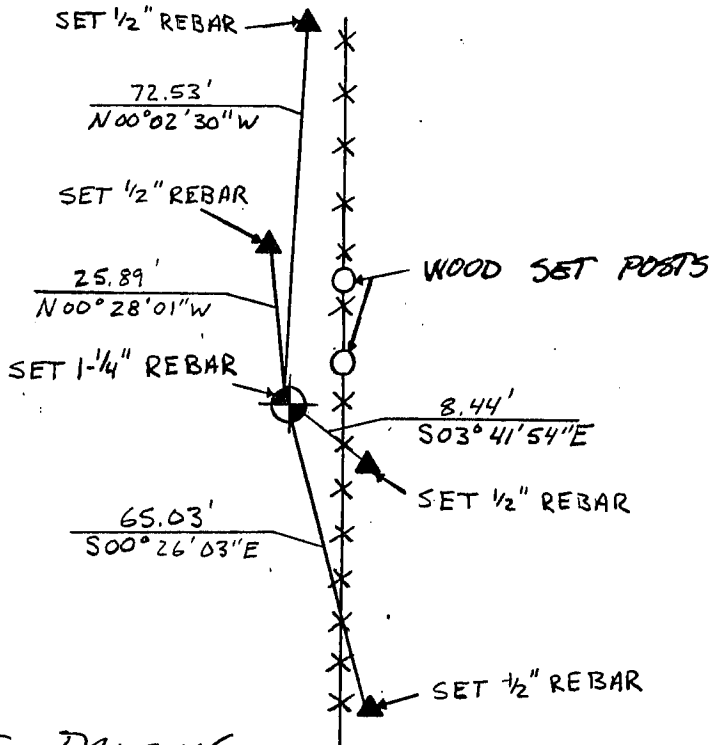


Section 11

(b) (f) (g) (h) Description of monument found at this corner and if it was accepted, state all evidence (material, testimonial, occupational, plats, records, other monuments) used as a basis for accepting. If not accepted or if nothing was found, state evidence used as basis for establishing location. If reestablished through lost corner proportionate methods, indicate all monuments, distances and directions used to establish.

SET 1/4" IRON REBAR AT OCCUPIED LOCATION.
 VERIFIED LOCATION WITH EDM TRAVERSE OF
 THE AREA.

(c) (d) (e) Plan view of corner with ties to at least 4 witness monuments. If in disagreement with previously established corner, show the distances between the two corners and also indicate the ties to the disputed corner.



(i) KEITH E. DALSING
 (type or print name) certify that the corner location on this record was determined by me or under my direction and control and that this U.S. Public Land Survey Monument Record is correct and complete to the best of my knowledge and belief.

Keith E. Dalsing
 Signature

9.18.97
 Date

