

U.S. PUBLIC LAND SURVEY MONUMENT RECORD - GRANT COUNTY, WI

Section 12, Town 1 North Range 1 West, Town of Hazel Green (a)

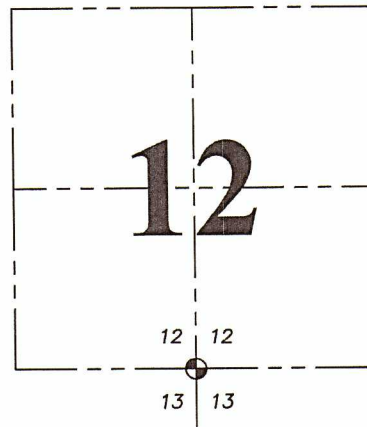
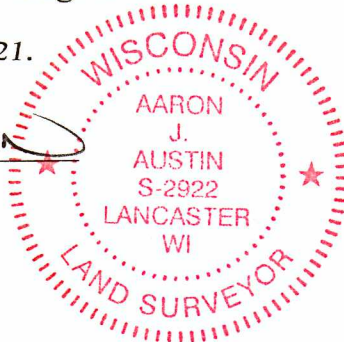
NOTE: This form is intended and designed to fulfill all requirements of the Wisconsin Administrative Code Chapter A-E 7.08, U.S. Public Land Survey Monument Record (3) (a) (b) (c) (d) (e) (f) (g) (h) (i).

CERTIFICATE: (i)

I, Aaron J. Austin, Wisconsin Professional Land Surveyor, do hereby certify that the corner location on this record was determined by me and/or under my direct supervision and that this U.S. Public Land Survey Monument Record is correct and complete to the best of my knowledge and belief.

Dated this 14th day of May, 2021.

Aaron J. Austin
 Aaron J. Austin, S-2922



☉ = CORNER LOCATION

Grant County Coordinates:
 NAD 83 (2011)
 Northing: 420,859.16
 Easting: 893,169.87

HISTORY OF CORNER ESTABLISHMENT:

Original corner was set in 1832 by Lucius Lyon.
 Bruce Bowden set a 1" Rebar and prepared a Survey Monument Record dated 2/14/1989.

DESCRIPTION OF CORNER EVIDENCE FOUND: (b) (f) (g) (h)

I found an 1" Rebar Bowden set. I set four witness corners after I verified the Monument's location with G.P.S. and E.D.M. methods.

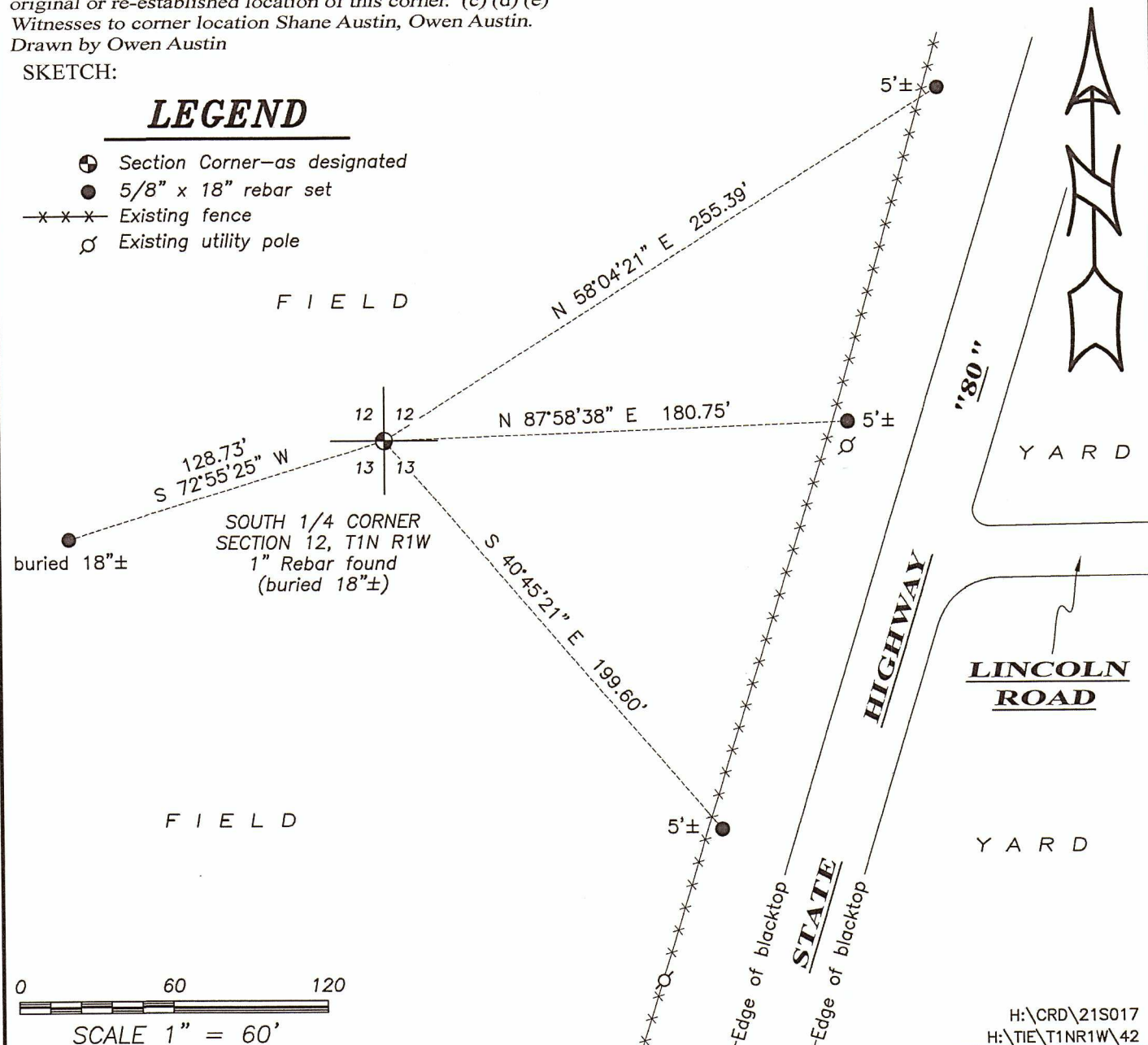
DESCRIPTION OF CORNER AND WITNESS MONUMENTS, references and accessories used to perpetuate the original or re-established location of this corner. (c) (d) (e)

Witnesses to corner location Shane Austin, Owen Austin.
 Drawn by Owen Austin

SKETCH:

LEGEND

- ☉ Section Corner—as designated
- 5/8" x 18" rebar set
- x-x-x- Existing fence
- ⊘ Existing utility pole



H:\CRD\21S017
 H:\TIE\T1NR1W\42

(e) Describe any material discrepancy between the location of corner as restored or reestablished and the location of that corner as previously restored or reestablished by distance and direction. Show the discrepancy on the plan view drawing under (d), above. Show the distances between the corner as previously restored or reestablished and (1) the corner as restored or reestablished, and (2) to at least 2 of the witness monuments shown on the drawing in (d), above.

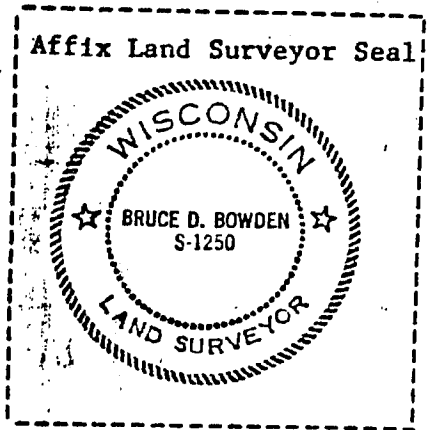
NONE

(f) Was the corner restored through acceptance of (1) an obliterated evidence location, or, (2) a found perpetuated location?

(2) A FOUND PERPETUATED LOCATION

(g&h) Was the corner reestablished through lost corner proportionate methods? If so, show the method, including the directions and distances to other public land survey corners used as evidence or used for proportioning in determining the corner location?

No.



(1) I, BRUCE D. BOWDEN
(type or print name) certify that the corner location shown on this record was determined by me or under my direction and control and that this U.S. Public Land Survey Monument Record is correct and complete to the best of my knowledge and belief.

Bruce D Bowden
Signature

Feb 14, 1989
Date