

# LAFAYETTE COUNTY

## Survey Monument Record

TYPE OF MONUMENT \_\_\_\_\_

STATE PLANE COORDINATES: N \_\_\_\_\_  
E \_\_\_\_\_

ELEVATION — M.S.L. DATUM: \_\_\_\_\_

THETA ANGLE: \_\_\_\_\_

FIELD BOOK: \_\_\_\_\_

PAGE \_\_\_\_\_

CORNER NO. \_\_\_\_\_

SECTION 7

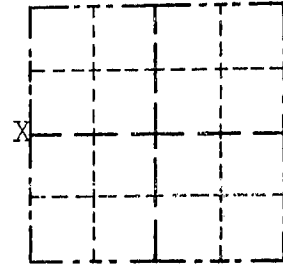
TOWN 1N

RANGE 1E

### BASIS FOR MONUMENT LOCATION

(Use reverse side if necessary)

Show info such as: History of corner, with reference to Vol. and pg., dates, surveyor; exact description of monument replaced; if location computed, by taped or EDM traverse; landowner, remarks, etc.

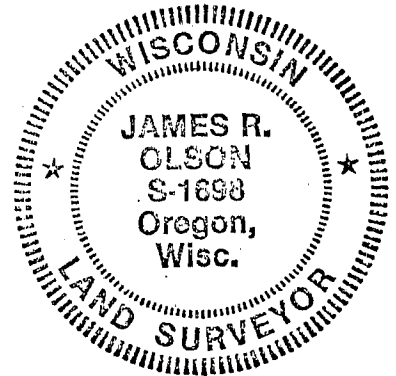


LOCATION  
(Indicated by "X")

SEAL:

No history of corner since original Government survey.

Corner was set by existing physical evidence.



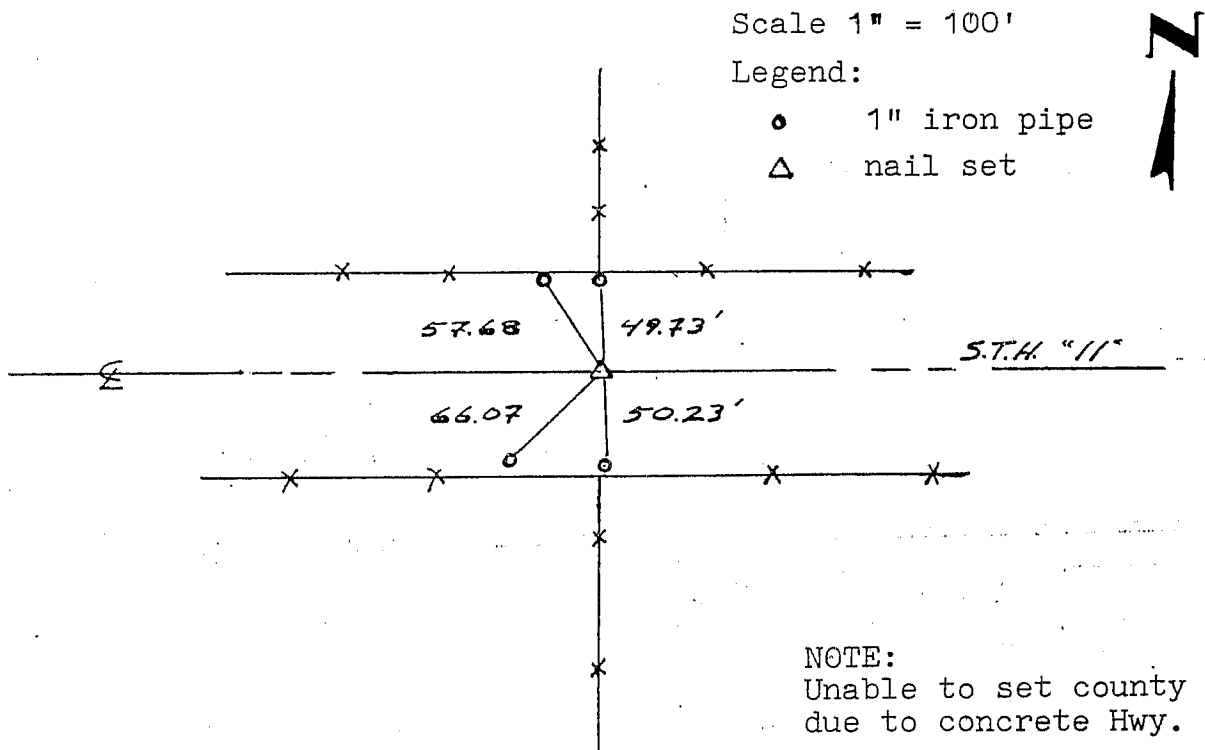
CERTIFIED CORRECT

*James R. Olson*  
Registered Land Surveyor

DATE: 4/4/84

### TIE SKETCH

Show at least three (3) ties and monument



NOTE:  
Unable to set county mon.  
due to concrete Hwy.