

U.S. PUBLIC LAND SURVEY MONUMENT RECORD - GRANT COUNTY, WI

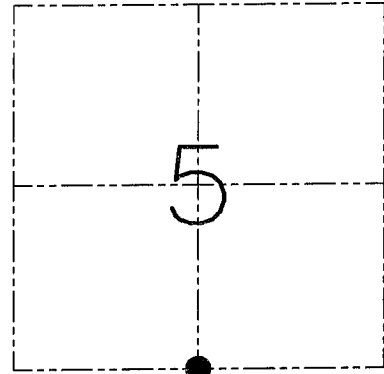
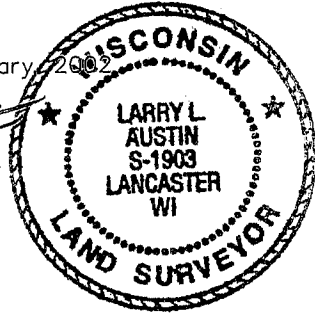
Section 5, Town 1 North Range 1 West, Town of Hazel Green

CERTIFICATE

I, Larry L. Austin, do hereby certify that the corner location on this record was determined by me and/or under my direct supervision and that this U.S. public land survey monument record is correct and complete to the best of my knowledge and belief.

Dated this 16th day of January, 2002

Larry L. Austin
Larry L. Austin S-1903



● = CORNER LOCATION

HISTORY OF CORNER ESTABLISHMENT

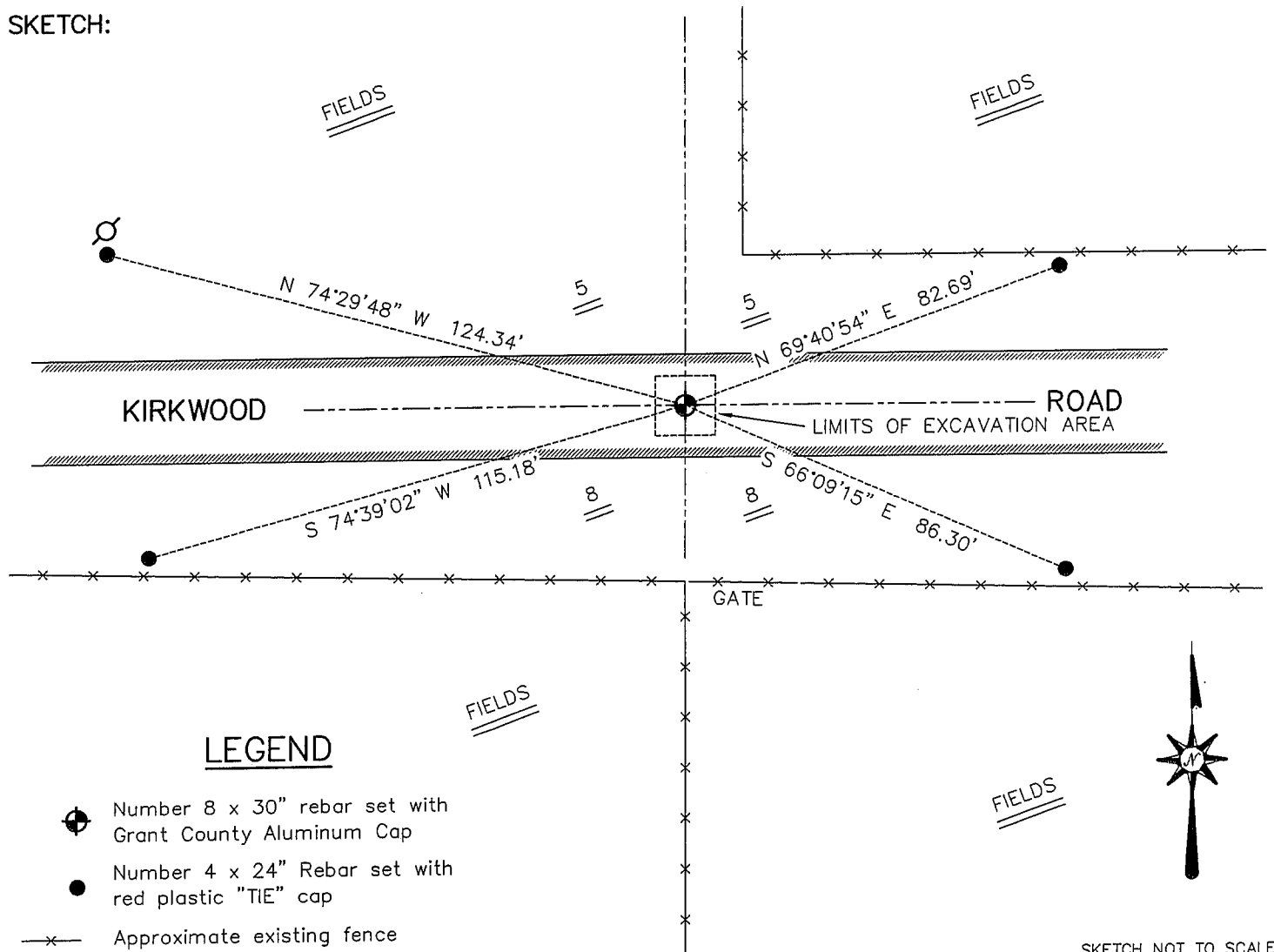
Corner was originally set in 1832 by Lucius Lyon.
In 1879 Barber set a Rock at this location.

DESCRIPTION OF CORNER EVIDENCE FOUND

I found a rock in a rock pile below the surface of the road. I accepted this location after an EDM & GPS traverse of the area.

DESCRIPTION OF CORNER AND WITNESS MONUMENTS, references and accessories used to perpetuate the original or re-established location of this corner. Witnesses to the corner location Bobby Sedgwick & Shelby Blindert & Kelly Wolf

SKETCH:



SKETCH NOT TO SCALE

AUSTIN ENGINEERING, LLC

4211 HWY 81 EAST, LANCASTER, WI 53813
PHONE 608-723-6363 FAX 608-723-6702

FIELDBOOK: SDR33, 2200
G: \T1NR1W\T1NR1W
C: \SWA\TIE\T1NR1W\30
CREW: BS-SB-SA-DM-KW

DRAWN BY: SW AUSTIN
APPROVED: LL AUSTIN

CORNER NUMBER 30