


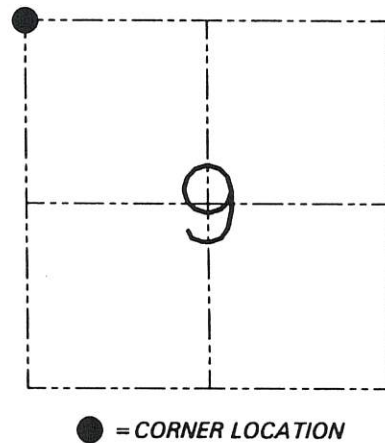
**U.S. PUBLIC LAND SURVEY MONUMENT RECORD - GRANT COUNTY, WI**  
 Section 09, Town 1 North Range 1 West, Town of Hazel Green

CERTIFICATE

I, Larry L. Austin, do hereby certify that the corner location on this record was determined by me and/or under my direct supervision and that this U.S. public land survey monument record is correct and complete to the best of my knowledge and belief.

Dated this 24th day of May, 2001

*Larry L. Austin*  
 Larry L. Austin S-1903  




HISTORY OF CORNER ESTABLISHMENT

Corner was originally set in 1832 by Lucius Lyon. In 1855 & 1857 Overton tied to the corner. In 1879 Joel Barber found an ancient stone corner.




DESCRIPTION OF CORNER EVIDENCE FOUND

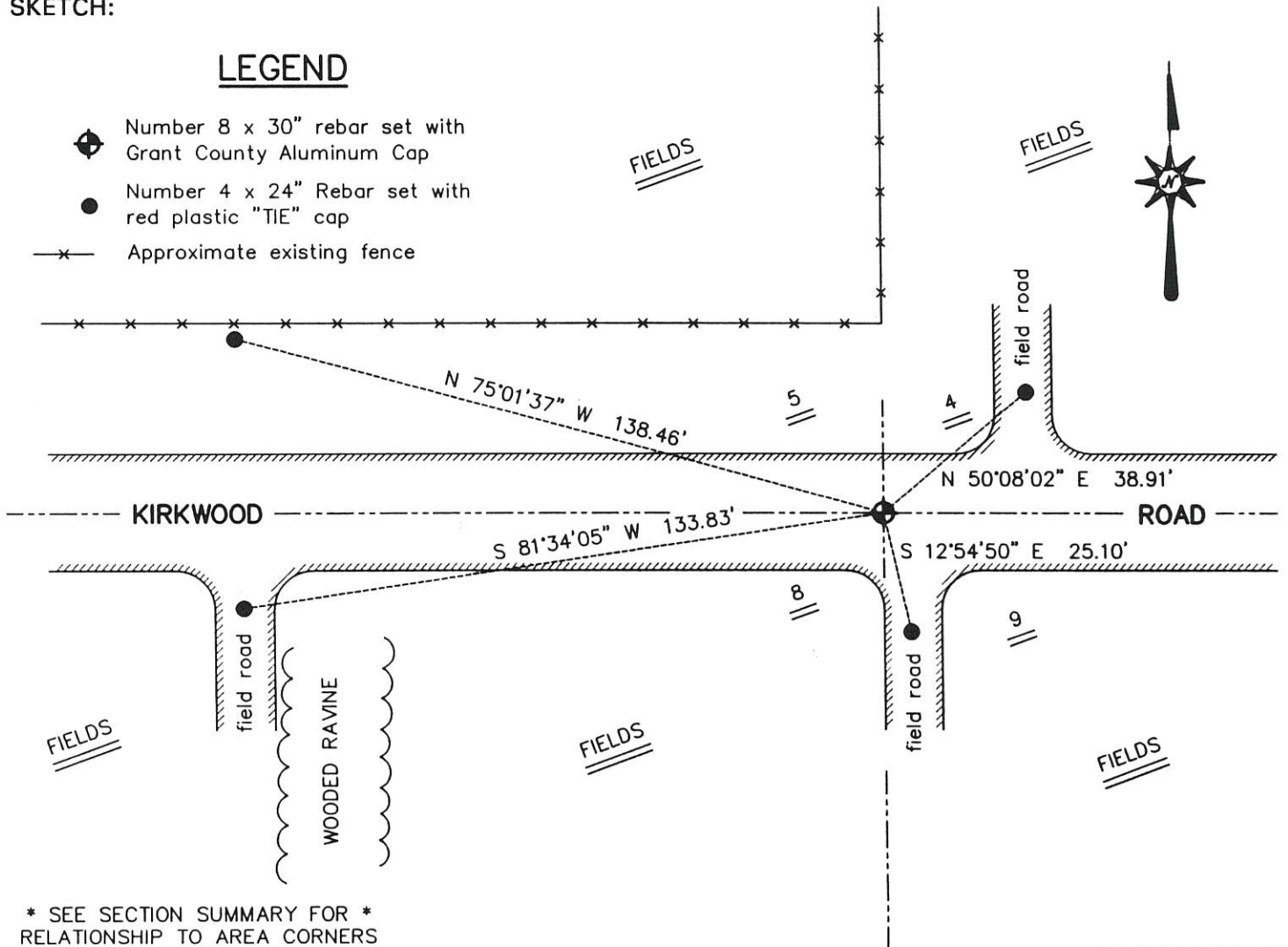
I was unable to locate the stone at this time due to the hard road surface. I found and accepted an occupied location after an EDM & GPS traverse of the area.

DESCRIPTION OF CORNER AND WITNESS MONUMENTS, references and accessories used to perpetuate the original or re-established location of this corner. Witnesses to the corner location Bobby Sedgwick & Shelby Blindert & Tim Fauver

SKETCH:

LEGEND

-  Number 8 x 30" rebar set with Grant County Aluminum Cap
-  Number 4 x 24" Rebar set with red plastic "TIE" cap
-  Approximate existing fence



\* SEE SECTION SUMMARY FOR \*  
 RELATIONSHIP TO AREA CORNERS

SKETCH NOT TO SCALE

**AUSTIN ENGINEERING, LLC**

4211 HWY 81 EAST, LANCASTER, WI 53813  
 PHONE 608-723-6363 FAX 608-723-6702

FIELDBOOK: SDR33, 2006

G: \T1NR1W\15  
 C: \SWA\TIE\T1NR1W\29  
 CREW: BS-SB-SA-TF

DRAWN BY: SW AUSTIN  
 APPROVED: LL AUSTIN

**CORNER NUMBER 29**

29