

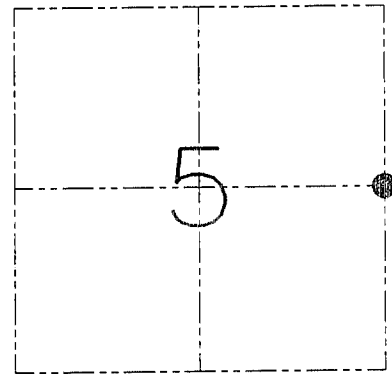
U.S. PUBLIC LAND SURVEY MONUMENT RECORD - GRANT COUNTY, WI
 Section 5, Town 1 North Range 1 West, Town of Hazel Green

CERTIFICATE

I, Larry L. Austin, do hereby certify that the corner location on this record was determined by me and/or under my direct supervision and that this U.S. public land survey monument record is correct and complete to the best of my knowledge and belief.

Dated this 16th day of January, 2003

Larry L. Austin
 Larry L. Austin S-1903



● = CORNER LOCATION

HISTORY OF CORNER ESTABLISHMENT

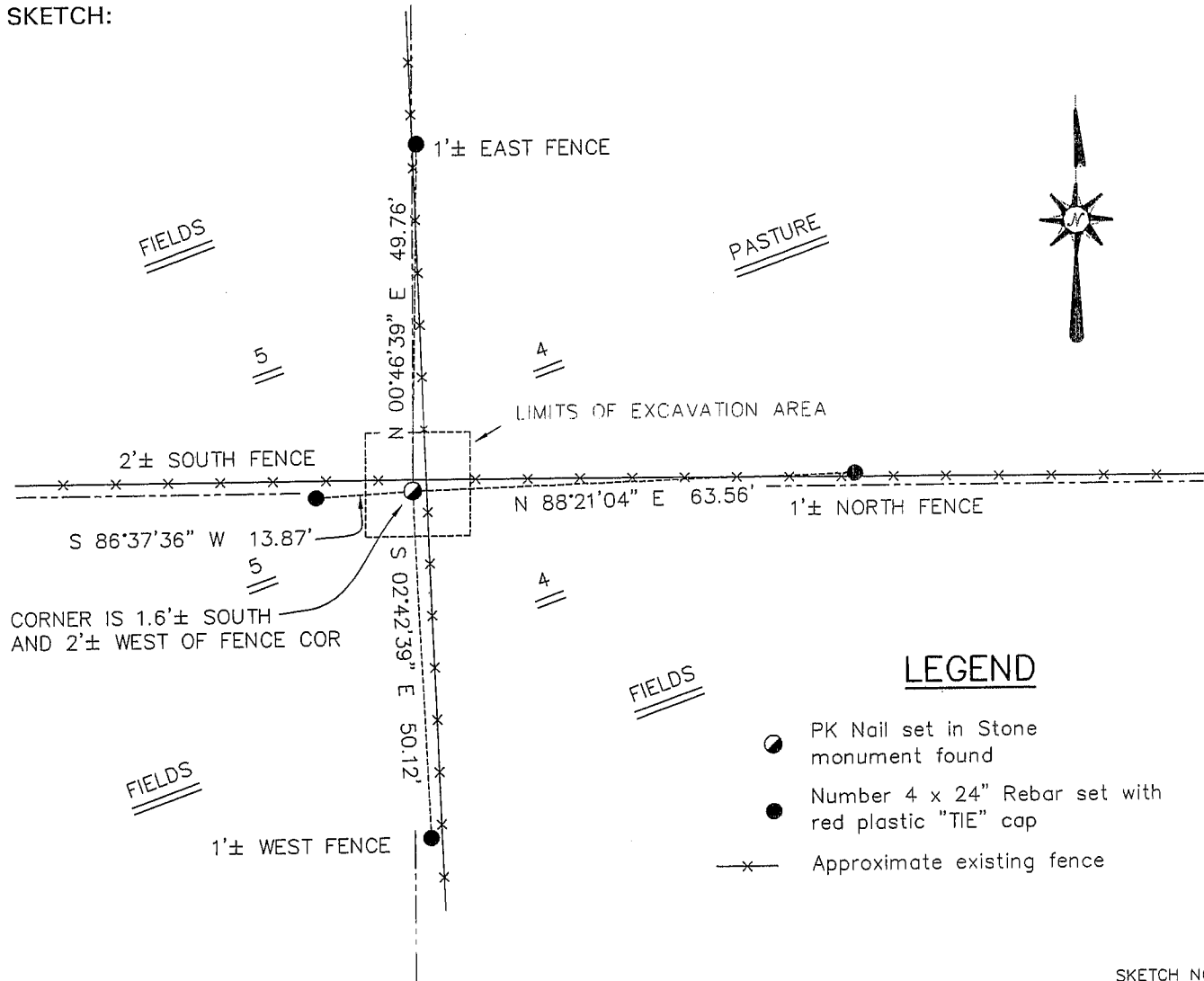
Corner was originally set in 1832 by Lucius Lyon.
 Barber tied to the corner in 1879.

DESCRIPTION OF CORNER EVIDENCE FOUND

I found a stone at the base of a fence post. I accepted this location after an EDM & GPS traverse of the whole section.

DESCRIPTION OF CORNER AND WITNESS MONUMENTS, references and accessories used to perpetuate the original or re-established location of this corner. Witnesses to the corner location Bobby Sedgwick & Shelby Blindert & Kelly Wolf Shane Austin & Dustin Maas

SKETCH:



LEGEND

- PK Nail set in Stone monument found
- Number 4 x 24" Rebar set with red plastic "TIE" cap
- x— Approximate existing fence

SKETCH NOT TO SCALE

AUSTIN ENGINEERING, LLC

4211 HWY 81 EAST, LANCASTER, WI 53813
 PHONE 608-723-6363 FAX 608-723-6702

FIELDBOOK: SDR33, 2200
 G: \T1NR1W\T1NR1W
 C: \SWA\TIE\T1NR1W\16
 CREW: BS-SB-SA-DM-KW

DRAWN BY: SW AUSTIN
 APPROVED: LL AUSTIN

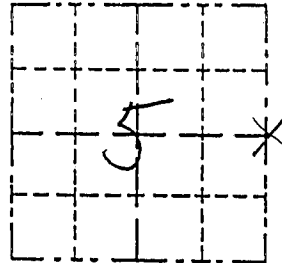
CORNER NUMBER 16

REC'D APR 22 1998

Survey Monument Record

TYPE OF MONUMENT 3/4" Rebar set
STATE PLANE COORDINATES: N _____
E _____
ELEVATION — M.S.L. DATUM: _____
THETA ANGLE: _____
FIELD BOOK: _____
PAGE _____

CORNER NO. _____
SECTION 5
TOWN T1N
RANGE R1W



BASIS FOR MONUMENT LOCATION

(Use reverse side if necessary)

Show info such as: History of corner, with reference to Vol. and pg., dates, surveyor; exact description of monument replaced; if location computed, by taped or EDM traverse; landowner, remarks, etc.

LOCATION
(indicated by "X")

- FOUND PERPETUATED LOCATION
- OBLITERATED EVIDENCE LOCATION
- LOST CORNER (RESTORED BY PROPORTIONATE METHODS)

A 4 way fence intersection as noted in a group of surveys by Barber from June of 1879 was accepted and monumented after measurements to other corners in section 5 confirmed the relationships noted in these surveys.

CERTIFIED CORRECT TO THE BEST OF MY KNOWLEDGE AND BELIEF

Michael R. LaRosa
Registered Land Surveyor

DATE: 3/27/1998

TIE SKETCH

Show at least (4) ties and monument

- A-B N 0° 55' 14" W 56.59'
- A-C N 2° 06' 47" W 24.44'
- A-D N 88° 17' 36" W 21.66'
- A-E N 88° 51' 53" W 55.44'

