

# GRANT COUNTY CERTIFIED LAND CORNER

CORNER NUMBER 20

**CERTIFICATE:**

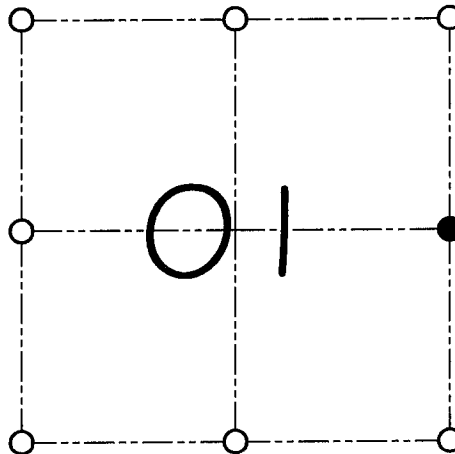
I, Larry L. Austin, do hereby certify that on the 20th day of September, 2000, I found evidence of the East 1/4 corner of Section 01, Town 1 North, Range West, of the 4th Principal Meridian, and I re-established said corner according to the Wisconsin statutes as shown and described hereon.

Dated this 22nd day of September, 2000

Larry L. Austin S-1903



SEAL



● = CORNER LOCATION

EAST 1/4 CORNER OF  
SECTION 01, T 1 N R 2 W  
TOWN OF JAMESTOWN

**HISTORY OF ORIGINAL CORNER ESTABLISHMENT:**

Corner was originally set in 1832 by Lucius Lyon. In 1853 Overton found the original corner. In 1993 David Burbach set a Number 6 rebar.

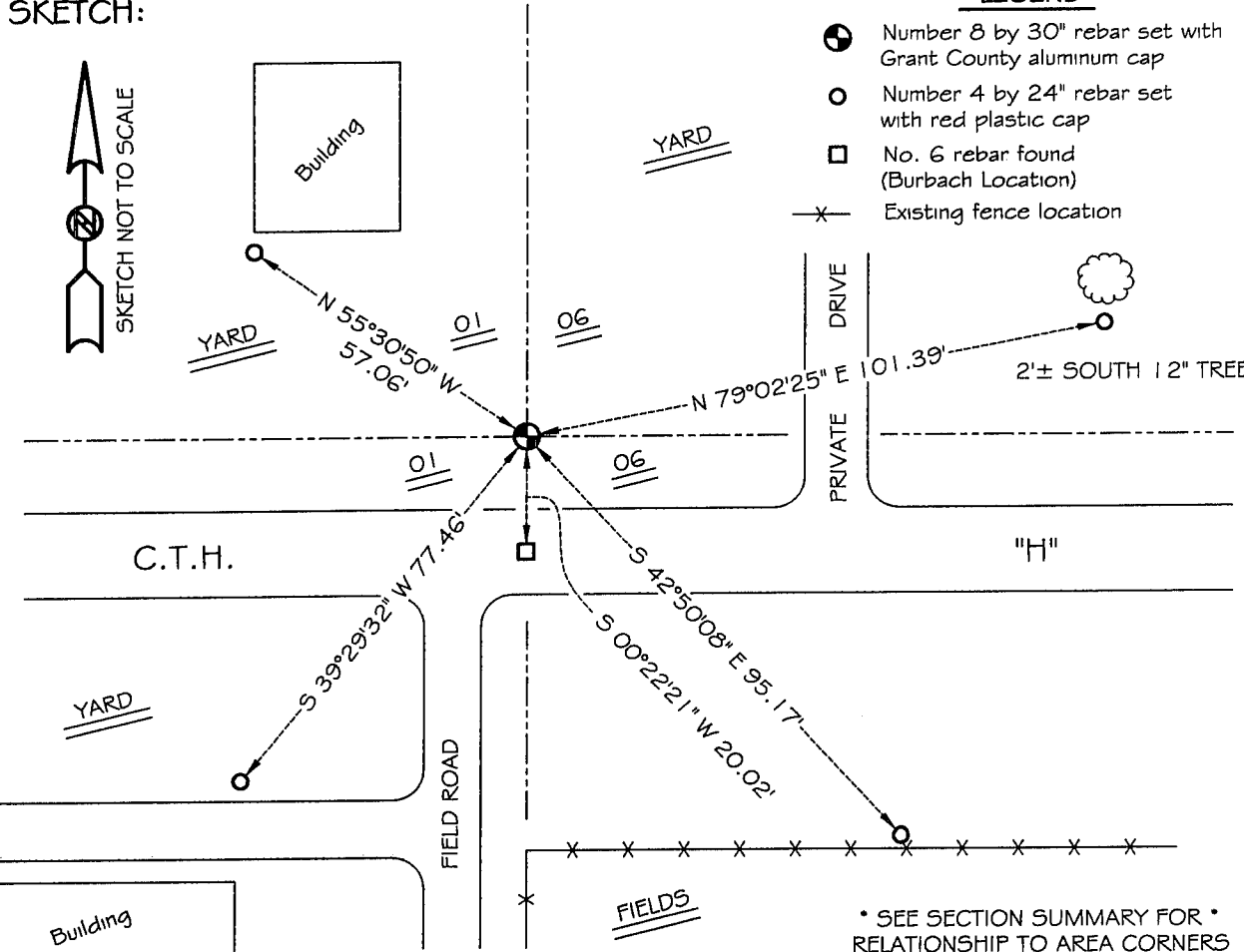
**DESCRIPTION OF CORNER EVIDENCE FOUND:**

I found the existing No. 6 rebar. I did not accept it's location after measuring to the existing corners North & South of the corner. I reset the corner proportionately on the East line of Section 01. Verified this location using E.D.M. & G.P.S. methods.

**DESCRIPTION OF CORNER AND WITNESS MONUMENTS, references and accessories used to perpetuate the original or re-established location of this corner**

WITNESS TO THE CORNER LOCATION: SHELBY BLINDERT & BOBBY SEDGWICK

**SKETCH:**



LEGEND

- Number 8 by 30" rebar set with Grant County aluminum cap
- Number 4 by 24" rebar set with red plastic cap
- No. 6 rebar found (Burbach Location)
- x— Existing fence location

\* SEE SECTION SUMMARY FOR \*  
RELATIONSHIP TO AREA CORNERS

# U.S. PUBLIC LAND SURVEY MONUMENT RECORD

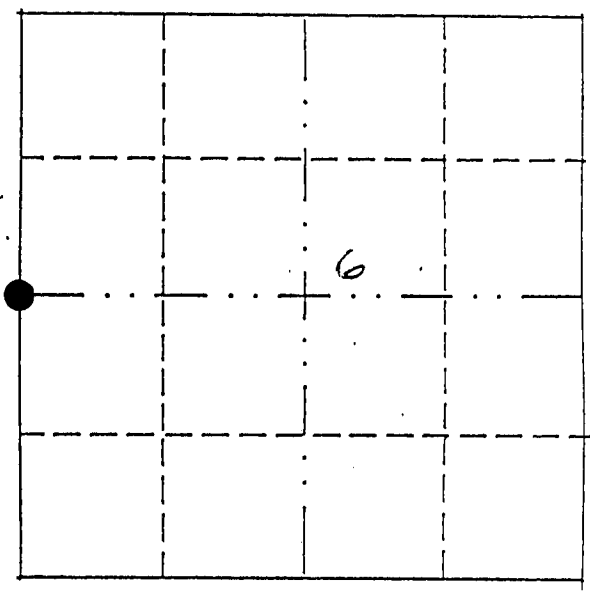
GRANT COUNTY

THIS RECORD SHALL SHOW THE LOCATION OF THE CORNER AND SHALL INCLUDE ALL OF THE FOLLOWING NINE ELEMENTS (A THROUGH I).

JUN 16 1903

(a) Identify the corner by reference to the U.S. public land survey system.

WEST 1/4 CORNER  
SECTION 6, T1N, R1W  
GRANT CO, WI



● = corner monument restored.

(b) Describe any record evidence, monument evidence, occupational evidence, testimonial evidence or any other material evidence you considered, and whether the monument was found or placed.

Monument placed in center of CTH "H" and in line with fence to the South after EDM traverse of area.

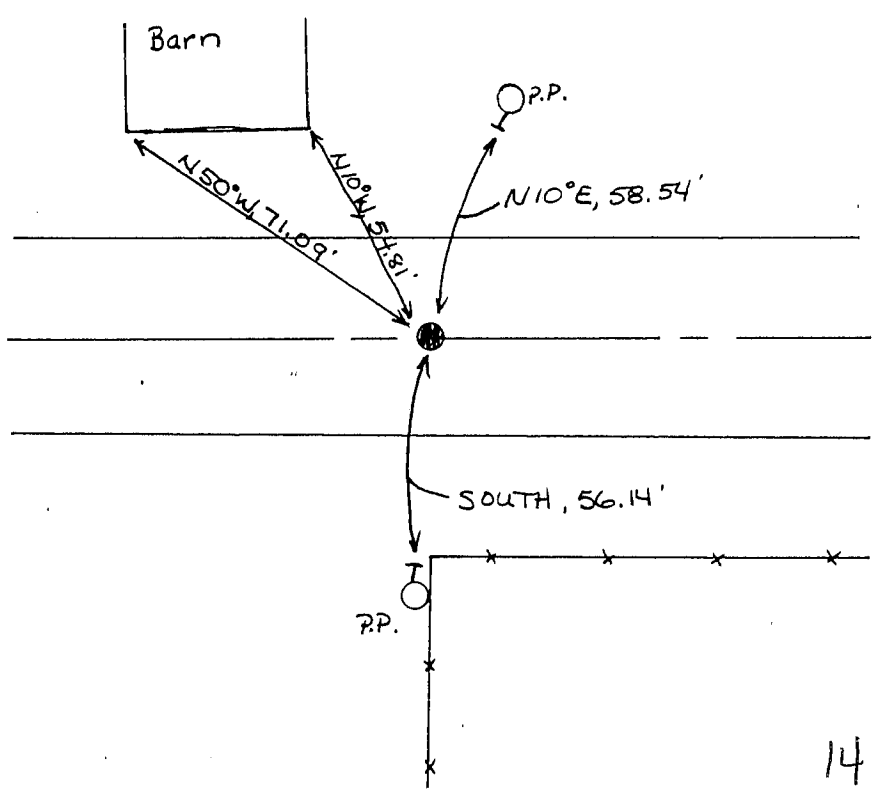
(c) In the plan view drawing below, provide reference ties to at least four witness monuments, or, if the location is within a municipality, to at least two witness monuments. (Witness monuments shall be made of concrete, natural stone, iron or other equally durable material.) Describe witness monuments.

(d) Show a plan view drawing depicting the relevant monuments and reference ties which is sufficient in detail to enable accurate relocation of the corner monument if the corner monument is disturbed. Indicate north.



NOT TO SCALE.

- = Section Corner Monument  
Set 3/4" x 24" Rebar
- = Witness Monument  
Set 1/2" Pipe
- = Existing Fence
- = Set spike in Power Pole



(e) Describe any material discrepancy between the location of the corner as restored or reestablished and the location of that corner as previously restored or reestablished by distance and direction. Show the discrepancy on the plan view drawing under (d), above. Show the distances between the corner as previously restored or reestablished and (1) the corner as restored or reestablished, and (2) to at least two of the witness monuments shown on the drawing in (d), above.

NONE

(f) Was the corner restored through acceptance of (1) an obliterated evidence location, or (2) a found perpetuated location?

/.

(g) & (h) Was the corner reestablished through lost corner proportionate methods? If so, show the method, including the directions and distances to other public land survey corners used as evidence or used for proportioning in determining the corner location?

No

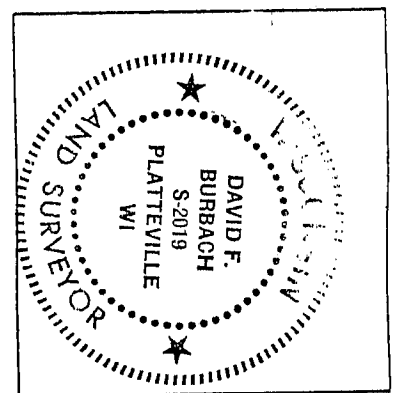
(i) I, DAVID F. BURBACH

(type or print name) certify that the corner location shown on this record was determined by me or under my direction and control and that this U.S. Public Land Survey Monument Record is correct and complete to the best of my knowledge and belief.

David F. Burbach

6/3/93

Date



affix land surveyor seal