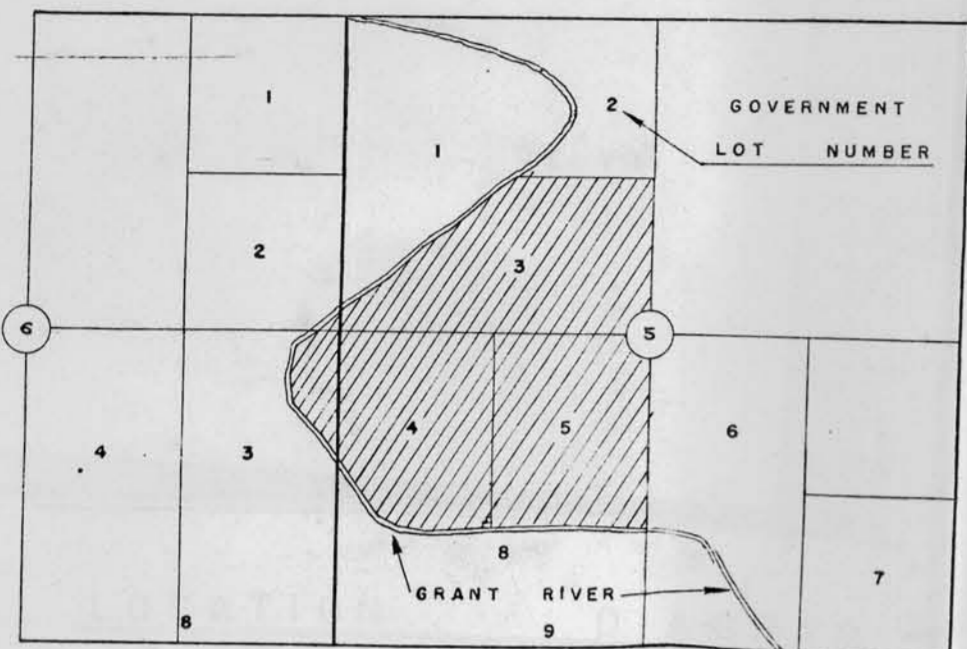
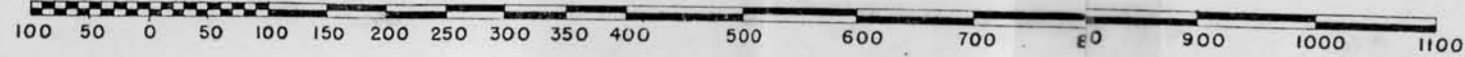


WALTER TAYLOR SURVEY

SCALE: 1" = 100'



LOCATION DIAGRAM
SECTION 5 AND THE EAST 1/2 OF SECTION 6, T 2 N, R 3 W.

PARCEL	ACREAGE MORE OR LESS
①	27.53
① EAST	16.40
① WEST	11.13
②	10.86
③	5.96
④	11.96
⑤	10.00
⑥	93.16
FW-354	60.10

ACREAGE

LEGEND:

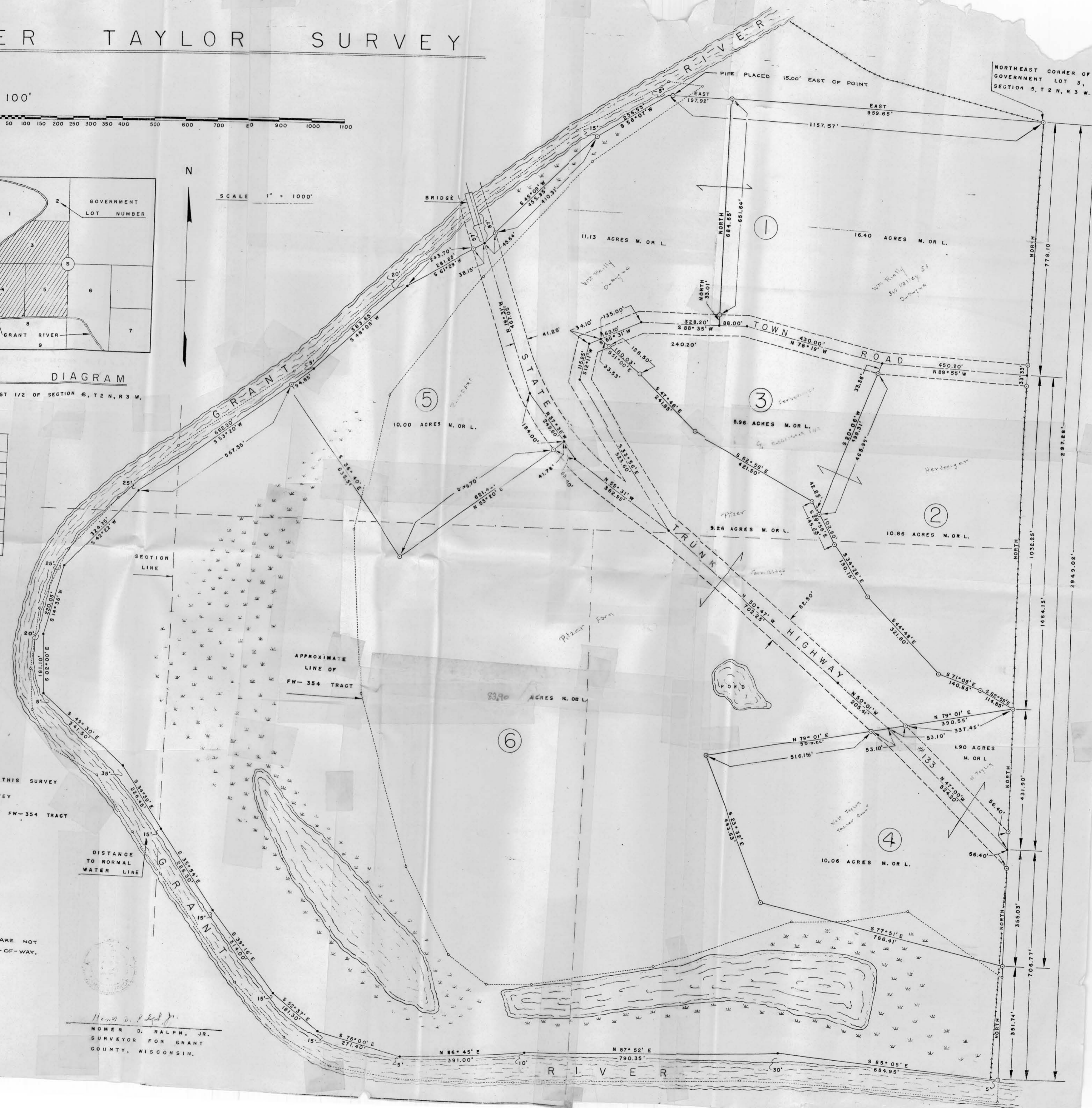
- 1" X 24" PIPE PLACED BY THIS SURVEY
- NAIL PLACED BY THIS SURVEY
- APPROXIMATE BOUNDARY OF FW-354 TRACT
- FENCE
- RIGHT-OF-WAY
- CENTERLINE
- GOVERNMENT LOT LINE
- MARSH

NOTE:

PIPE PLACED ALONG S.T.H. #133 ARE NOT NECESSARILY ON HIGHWAY RIGHT-OF-WAY.

David K. Krohn
DAVID K. KROHN
8/28/73 - 11/6/73

Homer D. Ralph, Jr.
HOMER D. RALPH, JR.
SURVEYOR FOR GRANT
COUNTY, WISCONSIN.



NORTHEAST CORNER OF GOVERNMENT LOT 3, SECTION 5, T 2 N, R 3 W.

SCALE 1" = 1000'



SECTION LINE

APPROXIMATE LINE OF FW-354 TRACT

RIVER

TRUNK HIGHWAY

TOWN ROAD

BRIDGE

POUND

3390 ACRES N. OR L.

#133

10.06 ACRES N. OR L.

326 ACRES N. OR L.

5.96 ACRES N. OR L.

10.00 ACRES N. OR L.

11.13 ACRES N. OR L.

16.40 ACRES N. OR L.

778.10

297.28

1032.25

1464.15

431.90

706.77

355.03

351.74

5

5

1157.57

EAST 959.65'

NORTH 884.65'

NORTH 691.64'

NORTH 33.01'

NORTH 1022.80'

NORTH 1307.15'

NORTH 321.80'

NORTH 327.49'

NORTH 119.85'

NORTH 56.40'

NORTH 56.40'

NORTH 56.40'

NORTH 56.40'

NORTH 56.40'

NORTH 56.40'

NORTH 56.40'

NORTH 56.40'

NORTH 56.40'

NORTH 56.40'

NORTH 56.40'

NORTH 56.40'

NORTH 56.40'

NORTH 56.40'

NORTH 56.40'

NORTH 56.40'

NORTH 56.40'

NORTH 56.40'

NORTH 56.40'

NORTH 56.40'

NORTH 56.40'

NORTH 56.40'

NORTH 56.40'

NORTH 56.40'

NORTH 56.40'

NORTH 56.40'

NORTH 56.40'

NORTH 56.40'

NORTH 56.40'

NORTH 56.40'

NORTH 56.40'

NORTH 56.40'

NORTH 56.40'

NORTH 56.40'

NORTH 56.40'

NORTH 56.40'

NORTH 56.40'

NORTH 56.40'

NORTH 56.40'

NORTH 56.40'

NORTH 56.40'

NORTH 56.40'

NORTH 56.40'

NORTH 56.40'

NORTH 56.40'

NORTH 56.40'

NORTH 56.40'

NORTH 56.40'

NORTH 56.40'

NORTH 56.40'

NORTH 56.40'

NORTH 56.40'

NORTH 56.40'

NORTH 56.40'

NORTH 56.40'

NORTH 56.40'

NORTH 56.40'

NORTH 56.40'

NORTH 56.40'

NORTH 56.40'

NORTH 56.40'

NORTH 56.40'

NORTH 56.40'

NORTH 56.40'

NORTH 56.40'

NORTH 56.40'

NORTH 56.40'

NORTH 56.40'

NORTH 56.40'

NORTH 56.40'

NORTH 56.40'

NORTH 56.40'

NORTH 56.40'

NORTH 56.40'

NORTH 56.40'

NORTH 56.40'

NORTH 56.40'

NORTH 56.40'

NORTH 56.40'

NORTH 56.40'

NORTH 56.40'

NORTH 56.40'

NORTH 56.40'

NORTH 56.40'

NORTH 56.40'

NORTH 56.40'

NORTH 56.40'

NORTH 56.40'

NORTH 56.40'

NORTH 56.40'

NORTH 56.40'

NORTH 56.40'

NORTH 56.40'

NORTH 56.40'

NORTH 56.40'

NORTH 56.40'

NORTH 56.40'

NORTH 56.40'

NORTH 56.40'

NORTH 56.40'

NORTH 56.40'

NORTH 56.40'

NORTH 56.40'

NORTH 56.40'

NORTH 56.40'

NORTH 56.40'

NORTH 56.40'

NORTH 56.40'

NORTH 56.40'

NORTH 56.40'

NORTH 56.40'

NORTH 56.40'

NORTH 56.40'

NORTH 56.40'

NORTH 56.40'

NORTH 56.40'

NORTH 56.40'

NORTH 56.40'

NORTH 56.40'

NORTH 56.40'

NORTH 56.40'

NORTH 56.40'

NORTH 56.40'

NORTH 56.40'

NORTH 56.40'

NORTH 56.40'

NORTH 56.40'

NORTH 56.40'

NORTH 56.40'

NORTH 56.40'

NORTH 56.40'

NORTH 56.40'

NORTH 56.40'

NORTH 56.40'

NORTH 56.40'

NORTH 56.40'

NORTH 56.40'

NORTH 56.40'

NORTH 56.40'

NORTH 56.40'

NORTH 56.40'

NORTH 56.40'

NORTH 56.40'

NORTH 56.40'

NORTH 56.40'

NORTH 56.40'

NORTH 56.40'

NORTH 56.40'

NORTH 56.40'

NORTH 56.40'

NORTH 56.40'

NORTH 56.40'

NORTH 56.40'

NORTH 56.40'