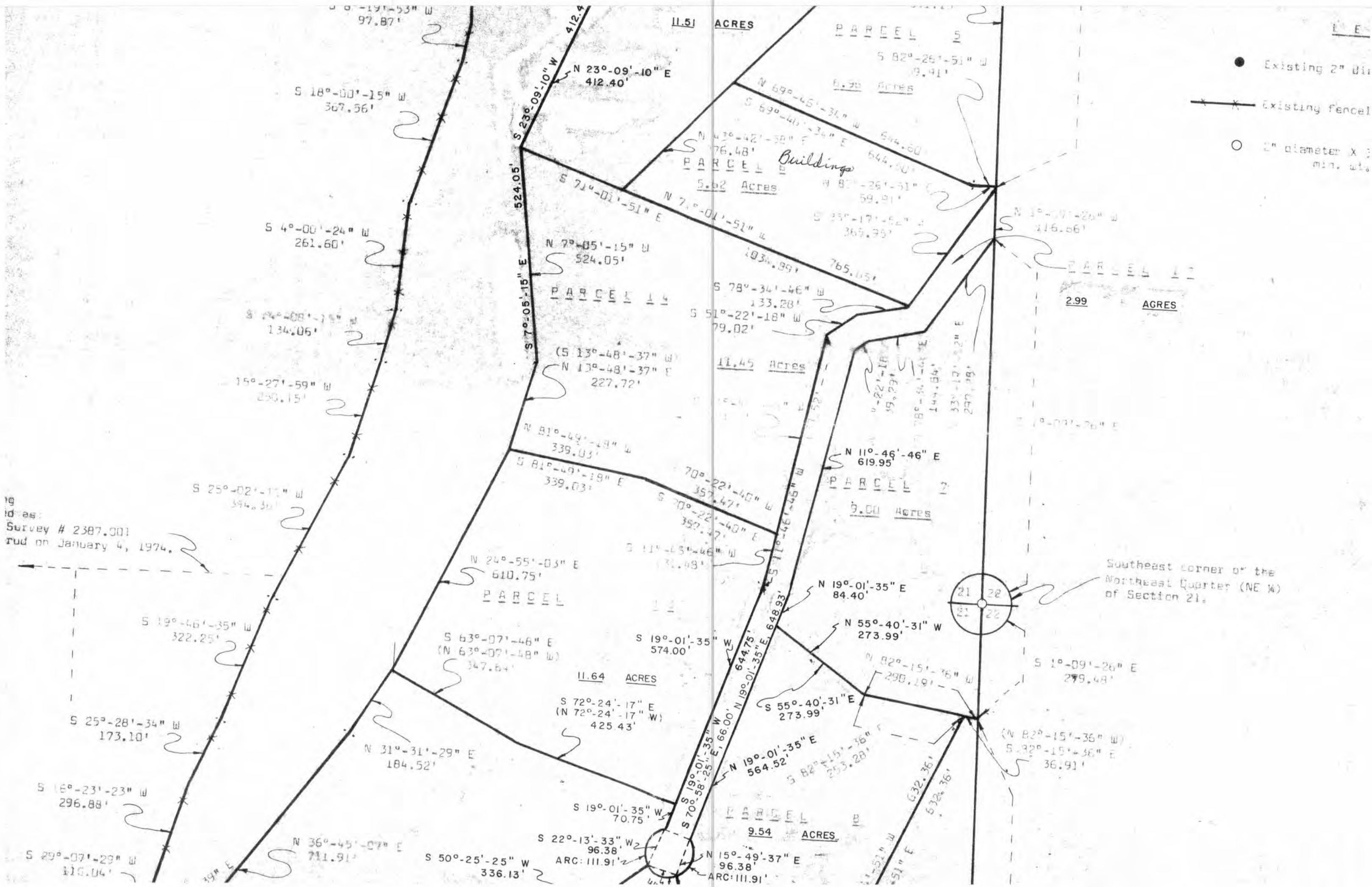




19  
 id as:  
 Survey # 2387.001  
 dated on January 4, 1974.



- Existing 2" dia
- X — Existing fence
- 2" diameter X : min. dia

S 19°-53'-15" W 97.87'

S 18°-00'-15" W 367.96'

S 4°-00'-24" W 261.60'

S 24°-08'-15" W 134.06'

S 15°-27'-59" W 250.15'

S 25°-02'-11" W 394.30'

S 19°-46'-35" W 322.25'

S 25°-28'-34" W 173.10'

S 16°-23'-23" W 296.88'

S 29°-07'-29" W 310.04'

N 36°-45'-07" E 711.91'

S 50°-25'-25" W 336.13'

S 22°-13'-33" W 96.38'

S 19°-01'-35" W 70.75'

N 31°-31'-29" E 184.52'

S 63°-07'-48" E (N 63°-07'-48" W) 347.64'

W 24°-55'-03" E 610.75'

S 81°-49'-19" E 339.03'

N 81°-49'-48" W 339.03'

(S 13°-48'-37" W) N 13°-48'-37" E 227.72'

N 7°-05'-15" W 524.05'

S 71°-01'-51" E

N 23°-09'-10" E 412.40'

S 23°-09'-10" W 412.40'

11.51 ACRES

5.82 Acres

11.45 Acres

11.64 ACRES

9.54 ACRES

PARCEL 5

8.70 ACRES

PARCEL 4 Buildings

5.82 Acres

PARCEL 14

PARCEL 2

9.00 ACRES

PARCEL 10

2.99 ACRES

Southeast corner of the Northeast Quarter (NE 1/4) of Section 21.



S 82°-26'-51" W 19.41'

N 69°-45'-31" W 644.60'

N 47°-42'-58" E 76.48'

N 69°-45'-31" W 644.60'

N 87°-26'-51" W 59.91'

S 25°-17'-52" W 369.79'

S 78°-34'-46" W 133.28'

S 51°-22'-18" W 79.02'

N 11°-46'-46" E 619.95'

N 19°-01'-35" E 84.40'

N 55°-40'-31" W 273.99'

N 82°-15'-36" W 290.19'

S 55°-40'-31" E 273.99'

N 19°-01'-35" E 564.52'

N 82°-15'-36" W 290.19'

S 55°-40'-31" E 273.99'

N 15°-49'-37" E 96.38'

N 15°-49'-37" E 96.38'

N 1°-09'-26" W 116.06'

N 1°-09'-26" E 279.48'

S 1°-09'-26" E 279.48'

(N 82°-15'-36" W) S 82°-15'-36" E 36.91'

S 82°-15'-36" E 36.91'

N 82°-15'-36" W 36.91'

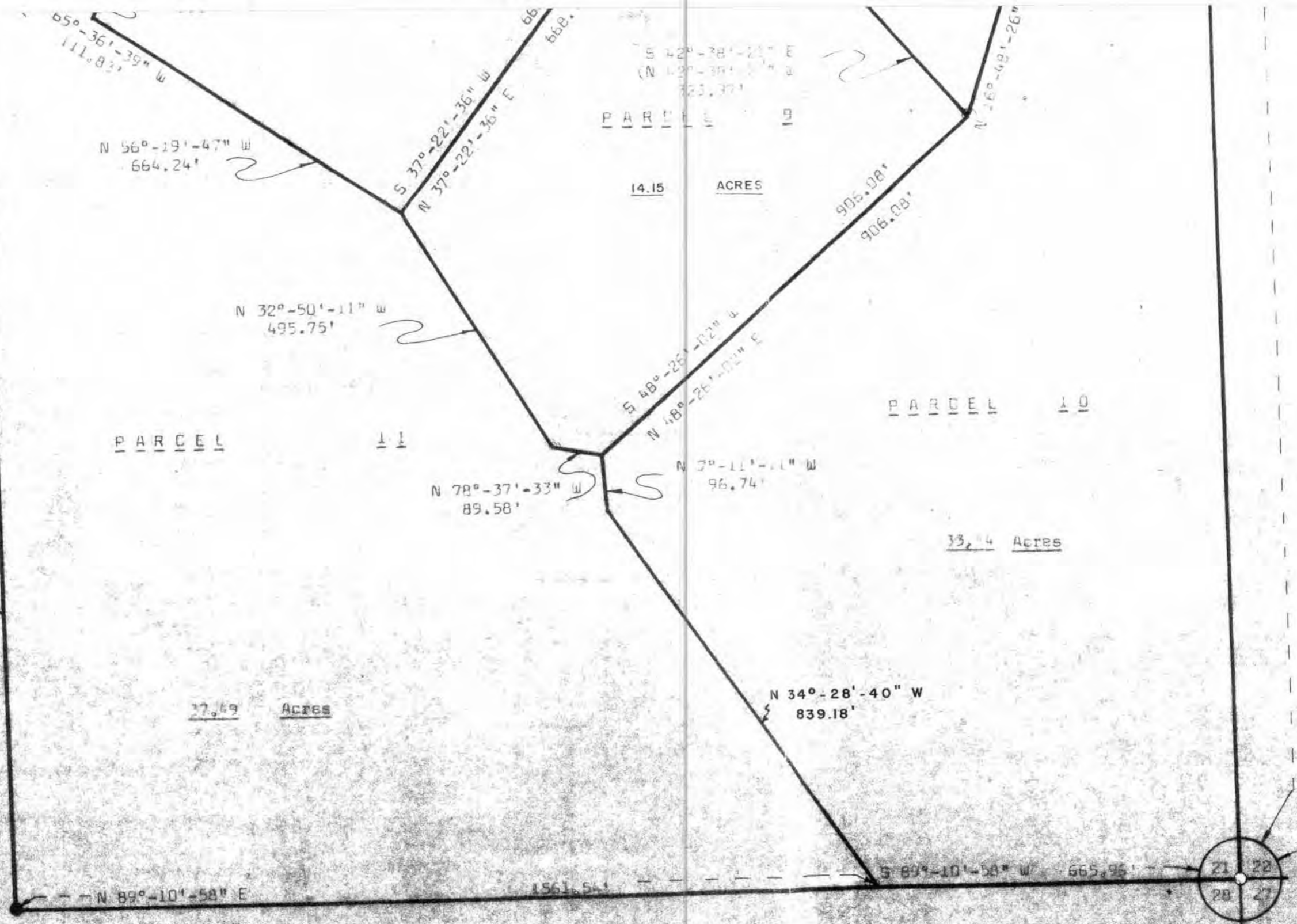
S 82°-15'-36" E 36.91'

N 82°-15'-36" W 36.91'



g on this line previously  
bed as: South on survey  
.001 by Herman J.  
rud on January 4, 1974.

1°-28'-10" E  
1717.20'



Southeast corner of  
Section 21.