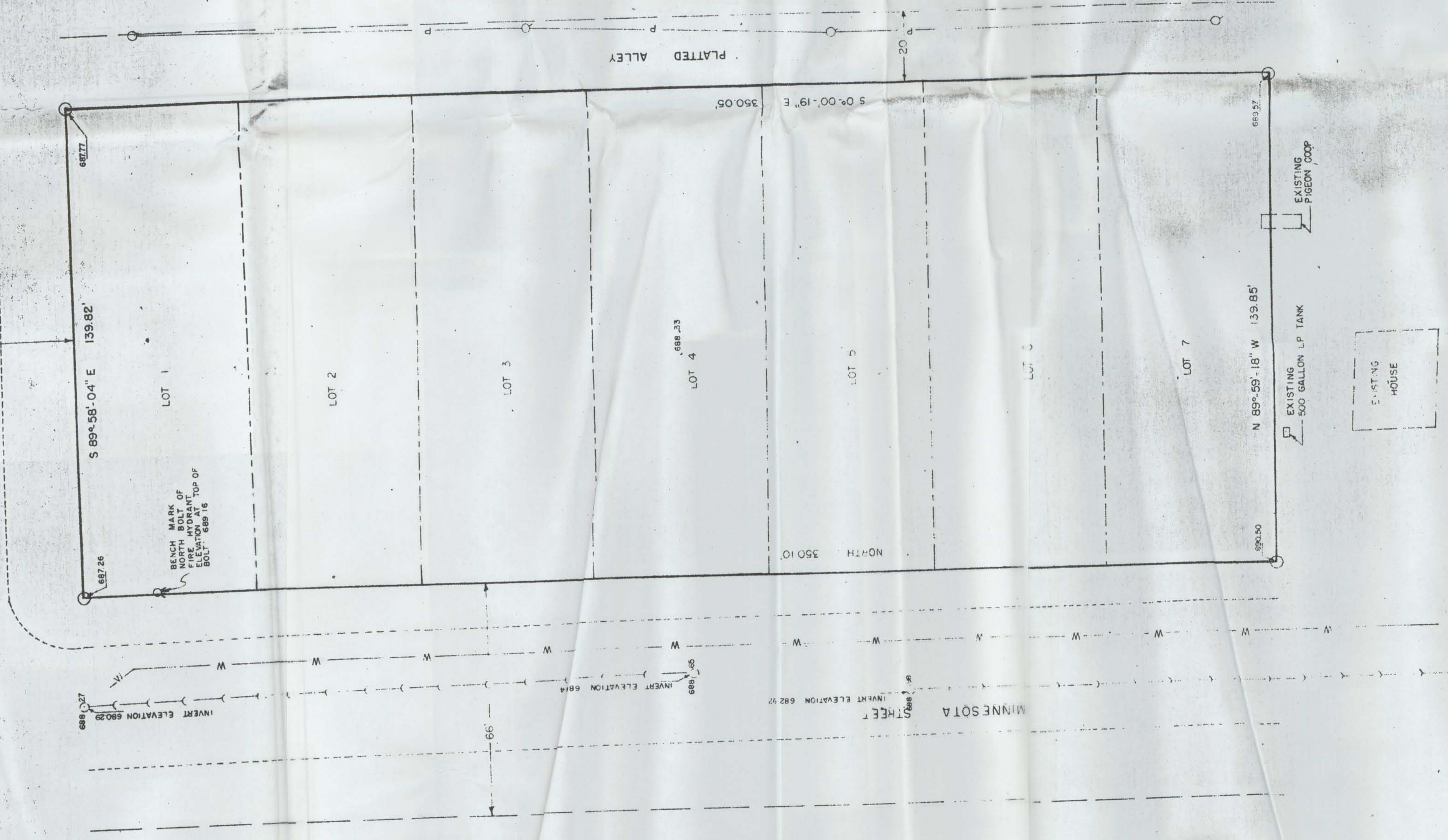
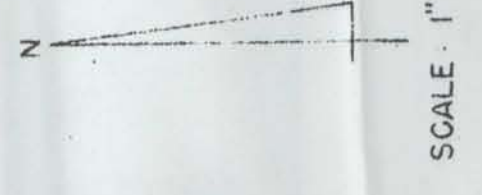


MAPLE STREET



- LEGEND
- 3/4" x 24" REINFORCING BAR, MIN. WT. 150 LBS./LIN. FT.
 - (—) EXISTING SANITARY SEWER
 - W— EXISTING WATER MAIN
 - Q POWER POLE
 - MANHOLE
 - ⊗ HYDRANT
 - P— EXISTING POWER LINE



SCALE: 1" = 20'

I CERTIFY THAT I HAVE SURVEYED THE PARCEL OF LAND SHOWN AND THAT THE PLAT SHOWN IS AN ACCURATE SURVEY AND A TRUE REPRESENTATION THEREOF AND CORRECTLY SHOWS THE EXTERIOR BOUNDARY LINES OF SAID PARCEL AND THE TOPOGRAPHIC FEATURES SHOWN THEREON AND THE CORRECT MEASUREMENTS THEREOF.

DATED THIS 30th DAY OF SEPTEMBER, 1974
RICHLAND CENTER, WISCONSIN

HERMAN J. HOVELSRUD
REGISTERED LAND SURVEYOR S-749

SURVEY PLAT	
SURVEY FOR:	GORDON KOWING MADSEN DEVELOPMENT CORPORATION 502 ATLAS AVENUE MADISON, WISCONSIN 53714
SURVEY OF:	LOTS 1, 2, 3, 4, 5, 6 AND 7 OF BLOCK 114, VILLAGE OF MUSCODA, GRANT COUNTY, WISCONSIN
HOVELSRUD CONSULTING ASSOCIATES ENGINEERING AND SURVEYING RICHLAND COUNTY BANK BUILDING RICHLAND CENTER, WISCONSIN 53581	
REVISION DATES	DRAWN BY: SB DATE: SEPTEMBER 20, 1974

HACKNER SCHROEDER ROSLANSKY & ASSOCIATES INC.
Architects/Engineers/Planners
La Crosse, Wisconsin

AI madsen
DEVELOPERS
AND GENERAL CONTRACTORS
502 Atlas Avenue, Madison, Wisconsin 53714
Telephone: Area Code 608/221-3344

PROJECT
HSR # 73035
DEPT. OF LOCAL AFFAIRS & DEVELOPMENT
HUD PROJECT WIS 143-1
MUSCODA WISCONSIN

DRAWING
DATE
DRAWN BY
REVISIONS

SITE SURVEY
OCT '74

